

Gas Distribution Access Rule (GDAR)

Electronic Business Transactions (EBT) Standards Document

**for the
Gas Marketing Industry**

April 7, 2006

Version 1.0.2

Deleted: March 27

Deleted: 1

ÕÖŒǺÀÙXQÀÆÛÒÒÒ ÒÐVÁ

À
ÒÓVÀUæ åæå•ÄÖ[& { ^} ¢

œúòþ öóáöá

NOTICE OF DISCLAIMER

P[Á&[{ { ^} äää } Á Á Á[[ä ~ & Á Á ^} ä[! • Á Á ä ä ^ Á[! Á @ ~ | ä Á ^ Á |] | ä ä Ä

Deleted: F

Deleted: T æ&@G

χ^2

GDAR EBT Standards Change Log

Revision Date	Version	Revised Section and Reason:
P[ç^ { à^! /FI ÖÖÖ Ä	FÖÖÄ	U! ä ä a/Ö[& { ^} Ä
T ä&@Ö ÖÖÖ Ä	FÖÖÄ	Ü! [&^ à^! äU! ä^! /P[ÖÖÜ à{ ä•ä }•ä &[!] [! ä^ ä^ ä^ ä^] ää^ /ä^ ä^ ää^ /ä^ ä^ Ä
		ä ä ä ä } ä Ä [! ä ä * ä ä ä! [&^•• ä] [! ç^ { ^} • ä ä! ^ ä ä^! ä * ÄÖÖVÄ
		Y [! \ ä * ÄÖ! [^] Ä ^^ ä * • Ä
		Ä
<u>Ö! : ä Ä ÖÖÖ Ä</u>	<u>FÖÖÄ</u>	<u>Ö ä ä ä ä } ä Ä [! ä ä * ä ä ä! [&^•• ä] [! ç^ { ^} • ä ä! ^ ä ä^! ä * ÄÖÖVÄ</u>
		<u>Y [! \ ä * ÄÖ! [^] Ä ^^ ä * • Ä</u>



1. Introduction

 \overline{A} [illegible]

Á

1.1 The Roles of Points and Hubs

Á

[illegible]

A

[illegible]

A

[illegible]

Á

[illegible]

Á

- [illegible]

Deleted: F

Deleted: T æ&@G

[illegible]

- Á ÒæÁÚ[ð óæ æÞ[ÁP` àÁæð Áæ Áæ^][.æ!` Á[ÁÚ&@{ æ ÈÁÚ/ÓÓVÁ
 V[æ]•ææç[.Á[Á@ÁÚ[çä &Á` ÁÚ]æä Á[. Á@[* @æP` àÁ[ÁÚ][\^ÈæP` àÁ[Á
 Ú[ð óÁ[ÁÁÚ[ð óÁ[ÁÚ[ð óÁ[}}^æç[] ÈÁ
 •Á V@ÁÚ[ð óæ æÞ[ÁP` àÁÁ^ &ÓÓV• Á@æ[Á[óæ @\^Á[Á@Áæ äæää^áÁ
 V[æ]•ææç[] Á[]{ æ ÈÁ
 •Á V@ÁÚ[ð óæ æÞ[ÁP` àÁ]•\^Á@æ ÈÁÈÁ•ÈÚ` ÁÚÁÚÁ[]{ &•• ð *Á` Á[ÁÁ• Á` Á
 \^Á[]á ð *Áææ Áæ áÁ Á` Áæ[] ÈÁ
 •Á V@ÁÚ[ð óæ æÞ[ÁP` àÁ[] çæÁ ÁV[æ]•ææç[] ÈÁç\^Áæä ð *Á`•ç[Á@æÁæ Áæ Á
 æ Áæ äáÁæÁ[Á[Á[Áæ]•{ ä•ä[]• Á@æ[æ• Á@[* @æÁÚ[ð óæ æÞ[ÁP` àÁ
 •Á Áæ Á@Á•][]{ çæç Á` Á@Á[ä ð æ[Á` Á[ÁÁ• Á[Á[]æ Á@Á[æ]•ææç[]•Á ç Á
 @Á[]\^Á` ð Á•• Á[]á Á[Á[]{ &•• ð *Á
 •Á V@ÁÚ[ð óæ æÞ[ÁP` àÁ æ Á[] çæÁ Á æ] æÁ] d` Á` ÁÓV• Á[Á{ æ ÈÁ Á` áä{ È
 •ä`áÁ æ\^Áææç[æ Á
 •Á V@ÁÚ[ð óæ æÞ[ÁP` àÁwill notÁ[. Á] äÈV`ÁÓ[]{•\^Á @ Áæ Á[Á[Á
 T æ\^Áææç[æ Á Á@æ Áæ&•• Á[Á@ÁÓVÁ•ç[ÈÁ[]{•\^Áæ&•• Á[Á
 ð]{ æ[] Á[]Á Á[] çæÁ áÁæÁ^] á[]Á[Áä çä ç[Á[] ç Á@ÁÓVÁ
 Ú•ç[] ÈÁ

Á
Á

1.2 Technology Introduction

[illegible]

1.3 Glossary of Terms Used in This Document

À
V@À[|••æ^@œÀ^}Á|^]æ^âÁ|^|^Á|^Á@Á|}ç^}à}&^â}âœ•âœ&^Á-Á
|^æ^|^•Á-Á|^|çââ*ââæ|^æ^|Ê|^Ê&@ââ^•&âç|^Á-Á{|^Á-Á@Á|^•Á-
^•ââ/Á@Á^&ç|^•Á-Á@Á|^&|^}ç

Authentication: V@Á||&••Á @ÁÁ{]'Á{]'Á||*!æ ÁÁ
 æ|c@Á•^ÁÁ{]•ÁÁ|~á ÁÁÁ@Á{]'Á{]'Á||*!æ ÁÁ•^Á
 ~|{ Á @ ÁÁÁ&|ááæ ÁÁÁ^ÁÁÁ|{ Á{ { } ÁÁÁ ÁÁÁ ÁÁÁ
 &æ áÁÁ•Ááæ ÁÁ

Billing Address: Á/ @ Á aāā * Áāā! ^•• Á Á @Á@ ÁŌ } • { ^! q Áā! Á Á ^} dĀ

[illegible]

Consumer: ÁŒÁ^•[} Á @ Á••ÁæÁ| ÁŒÁ^•[} Á } ÁŒ }•{ | á } Ě

Deleted: F

Deleted: T æ&@G

[illegible]

ÕÖŒÀÙÒÜXŒÒÁŒÛÒÒT ÒP VÁ

À
ÒÓVÀUcæ åæå•ÄÖ[& { ^} á

ŒÚÒǾÖÓÄ

[illegible]

Formatted: Indent: Left: 0",
Numbered + Level: 1 + Numbering
Style: 1, 2, 3, + Start at: 1 +
Alignment: Left + Aligned at: 0.25"
+ Tab after: 0.5" + Indent at: 0.5",
Tabs: 0.25", List tab + Not at 0.5" +
0.75"

Formatted: Indent: Left: 0",
Numbered + Level: 1 + Numbering
Style: 1, 2, 3, + Start at: 1 +
Alignment: Left + Aligned at: 0.25"
+ Tab after: 0.5" + Indent at: 0.5",
Tabs: 0.25", List tab + Not at 0.5" +
0.75"

Formatted: Indent: Left: 0",
Numbered + Level: 1 + Numbering
Style: 1, 2, 3, + Start at: 1 +
Alignment: Left + Aligned at: 0.25"
+ Tab after: 0.5" + Indent at: 0.5",
Tabs: 0.25", List tab + Not at 0.5" +
0.75"

Formatted: Indent: Left: 0",
Numbered + Level: 1 + Numbering
Style: 1, 2, 3, + Start at: 1 +
Alignment: Left + Aligned at: 0.25"
+ Tab after: 0.5" + Indent at: 0.5",
Tabs: 0.25", List tab + Not at 0.5" +
0.75"

Formatted: Indent: Left: 0",
Numbered + Level: 1 + Numbering
Style: 1, 2, 3, + Start at: 1 +
Alignment: Left + Aligned at: 0.25"
+ Tab after: 0.5" + Indent at: 0.5",
Tabs: 0.25", List tab + Not at 0.5" +
0.75"

Items Outside the EBT System:

À
 Û^ç^!æ!Æ{ • Á@ææ^!^ • æ^!@ÁÓVÁ^•ç{ Æ~ ò^!æ!æ!Æ!Æ!ææ^!^!Æ ç^!^•ó
 q^!@Á æ!^!óæææ æ^!•q^!@ÁÓVÁ^•ç{ æ!æ!Æ &^!æ!Æ!Á^!^!} &^!æ!Æ!Á
 ÓÓVÁÛæ!æ!æ!Æ!Æ!ç^!æ! &^!Æ

Deleted: F

Deleted: T æ&@Ä

[illegible]

5. Electronic Business Transactions

[illegible]

Transaction Sets		Flow	Section
Initiating Transaction	Response Transaction		
Service Transaction Request (STR)		A	5.1
U[æ]A[] q d[]^æ^A[]^~^•d	U[æ]A[] q d[]^æ^A[] O&&[] d[]^b&d	UVÜFA	I È È È A
U[æ]A[] d[] *^A[]^~^~^•d	U[æ]A[] d[] *^A[] O&&[] d[]^b&d	UVÜGA	I È È È A
V[æ]•-^A[]^~^~^•d Q[] d&æV[æ]•-^A[]æ âA[æ]A[] q d V[æ]•-^A[]d	V[æ]•-^A[] O&&[] d[]^b&d	UVÜHA	I È È È A
O[] I[] A[]^~^~^•d	O[] I[] A[] O&&[] d[]^b&d	UVÜI A[] A UVÜI A	I È È A
O[] I[] A[]^~^~^•d	O[] I[] A[] O&&[] d[]^b&d	UVÜI A[] A UVÜF A	I È È A
V[æ]{ q ææ } A A[]çæA[]^~^~^•d	V[æ]{ q ææ } A A[]çæA[] O&&[] d[]^b&d	UVÜ } È A q A } È A	I È È A
U[æ]{ } }^æd } A A[]çæA[]^~^~^•d	U[æ]{ } }^æd } A A[]çæA[] O&&[] d[]^b&d	UVÜ } } È F A	I È È A
X[æ] â[] A[] A[] â[] A[] æ&Q Q[] I[] d[] d[] d[] d[] d[] d[] d[] d[]	A	UVÜFFA[] A UVÜGF A	I È È A
O[] •~{ ^A[] Q[] I[] { ææ } A[]^~^~^•d æDP â q I ææQ[] •~{ } q } A U[æ]~^~^~^•d âDP â q I ææA[]æ{ ^ } d[]^~^~^~^•d	A æDP â q I ææQ[] •~{ } q } A O&&[] d[]^b&d âDP â q I ææA[]æ{ ^ } d[] O&&[] d[]^b&d	A UVÜG G A A UVÜG A	I È È A
O d[] *^A[] [] •~{ ^A[] Q[] I[] { ææ } A U[æ]~^~^~^•d	O d[] *^A[] [] •~{ ^A[] Q[] I[] { ææ } O&&[] d[]^b&d	UVÜG È A È È A	I È È A
O d[] *^A[] [] •~{ ^A[] S[] æææ } A U[æ]~^~^~^•d	O d[] *^A[] [] •~{ ^A[] S[] æææ } O&&[] d[]^b&d	UVÜG A[] A È È A UVÜHF A	I È È A
		A	Æ
Consumption Transaction (CT)		A	5.2
O[] •~{ } q } A	O[] I[] æææ } A çæA[] O&&[] d[]^b&d	OVFA	I È A
	A	A	Æ
Invoice Transaction (INV)		A	5.3
Distributor Consolidated Billing in a Rate Ready Form	A	A	I È È A

Deleted: F

Deleted: T æ&@G

[illegible]

Business Rules For All Transaction Sets

Á
Ó[[, Áe^Á@Á~•q^••Á~|•Á@eÁ[[]^•][]âÁ[Áç^!^Á|&d[]}ãÁ/a)•æd}Ë
Á

- Á 𐀀𐀁𐀂𐀃𐀄𐀅𐀆𐀇𐀈𐀉𐀊𐀋𐀌𐀍𐀎𐀏𐀐𐀑𐀒𐀓𐀔𐀕𐀖𐀗𐀘𐀙𐀚𐀛𐀜𐀝𐀞𐀟𐀠𐀡𐀢𐀣𐀤𐀥𐀦𐀧𐀨𐀩𐀪𐀫𐀬𐀭𐀮𐀯𐀰𐀱𐀲𐀳𐀴𐀵𐀶𐀷𐀸𐀹𐀺𐀻𐀼𐀽𐀾𐀿𐁀𐁁𐁂𐁃𐁄𐁅𐁆𐁇𐁈𐁉𐁊𐁋𐁌𐁍𐁎𐁏𐁐𐁑𐁒𐁓𐁔𐁕𐁖𐁗𐁘𐁙𐁚𐁛𐁜𐁝𐁞𐁟𐁠𐁡𐁢𐁣𐁤𐁥𐁦𐁧𐁨𐁩𐁪𐁫𐁬𐁭𐁮𐁯𐁰𐁱𐁲𐁳𐁴𐁵𐁶𐁷𐁸𐁹𐁺𐁻𐁼𐁽𐁾𐁿𐂀𐂁𐂂𐂃𐂄𐂅𐂆𐂇𐂈𐂉𐂊𐂋𐂌𐂍𐂎𐂏𐂐𐂑𐂒𐂓𐂔𐂕𐂖𐂗𐂘𐂙𐂚𐂛𐂜𐂝𐂞𐂟𐂠𐂡𐂢𐂣𐂤𐂥𐂦𐂧𐂨𐂩𐂪𐂫𐂬𐂭𐂮𐂯𐂰𐂱𐂲𐂳𐂴𐂵𐂶𐂷𐂸𐂹𐂺𐂻𐂼𐂽𐂾𐂿𐃀𐃁𐃂𐃃𐃄𐃅𐃆𐃇𐃈𐃉𐃊𐃋𐃌𐃍𐃎𐃏𐃐𐃑𐃒𐃓𐃔𐃕𐃖𐃗𐃘𐃙𐃚𐃛𐃜𐃝𐃞𐃟𐃠𐃡𐃢𐃣𐃤𐃥𐃦𐃧𐃨𐃩𐃪𐃫𐃬𐃭𐃮𐃯𐃰𐃱𐃲𐃳𐃴𐃵𐃶𐃷𐃸𐃹𐃺𐃻𐃼𐃽𐃾𐃿𐄀𐄁𐄂𐄃𐄄𐄅𐄆𐄇𐄈𐄉𐄊𐄋𐄌𐄍𐄎𐄏𐄐𐄑𐄒𐄓𐄔𐄕𐄖𐄗𐄘𐄙𐄚𐄛𐄜𐄝𐄞𐄟𐄠𐄡𐄢𐄣𐄤𐄥𐄦𐄧𐄨𐄩𐄪𐄫𐄬𐄭𐄮𐄯𐄰𐄱𐄲𐄳𐄴𐄵𐄶𐄷𐄸𐄹𐄺𐄻𐄼𐄽𐄾𐄿𐅀𐅁𐅂𐅃𐅄𐅅𐅆𐅇𐅈𐅉𐅊𐅋𐅌𐅍𐅎𐅏𐅐𐅑𐅒𐅓𐅔𐅕𐅖𐅗𐅘𐅙𐅚𐅛𐅜𐅝𐅞𐅟𐅠𐅡𐅢𐅣𐅤𐅥𐅦𐅧𐅨𐅩𐅪𐅫𐅬𐅭𐅮𐅯𐅰𐅱𐅲𐅳𐅴𐅵𐅶𐅷𐅸𐅹𐅺𐅻𐅼𐅽𐅾𐅿𐆀𐆁𐆂𐆃𐆄𐆅𐆆𐆇𐆈𐆉𐆊𐆋𐆌𐆍𐆎𐆏𐆐𐆑𐆒𐆓𐆔𐆕𐆖𐆗𐆘𐆙𐆚𐆛𐆜𐆝𐆞𐆟𐆠𐆡𐆢𐆣𐆤𐆥𐆦𐆧𐆨𐆩𐆪𐆫𐆬𐆭𐆮𐆯𐆰𐆱𐆲𐆳𐆴𐆵𐆶𐆷𐆸𐆹𐆺𐆻𐆼𐆽𐆾𐆿𐇀𐇁𐇂𐇃𐇄𐇅𐇆𐇇𐇈𐇉𐇊𐇋𐇌𐇍𐇎𐇏𐇐𐇑𐇒𐇓𐇔𐇕𐇖𐇗𐇘𐇙𐇚𐇛𐇜𐇝𐇞𐇟𐇠𐇡𐇢𐇣𐇤𐇥𐇦𐇧𐇨𐇩𐇪𐇫𐇬𐇭𐇮𐇯𐇰𐇱𐇲𐇳𐇴𐇵𐇶𐇷𐇸𐇹𐇺𐇻𐇼𐇽𐇾𐇿𐈀𐈁𐈂𐈃𐈄𐈅𐈆𐈇𐈈𐈉𐈊𐈋𐈌𐈍𐈎𐈏𐈐𐈑𐈒𐈓𐈔𐈕𐈖𐈗𐈘𐈙𐈚𐈛𐈜𐈝𐈞𐈟𐈠𐈡𐈢𐈣𐈤𐈥𐈦𐈧𐈨𐈩𐈪𐈫𐈬𐈭𐈮𐈯𐈰𐈱𐈲𐈳𐈴𐈵𐈶𐈷𐈸𐈹𐈺𐈻𐈼𐈽𐈾𐈿𐉀𐉁𐉂𐉃𐉄𐉅𐉆𐉇𐉈𐉉𐉊𐉋𐉌𐉍𐉎𐉏𐉐𐉑𐉒𐉓𐉔𐉕𐉖𐉗𐉘𐉙𐉚𐉛𐉜𐉝𐉞𐉟𐉠𐉡𐉢𐉣𐉤𐉥𐉦𐉧𐉨𐉩𐉪𐉫𐉬𐉭𐉮𐉯𐉰𐉱𐉲𐉳𐉴𐉵𐉶𐉷𐉸𐉹𐉺𐉻𐉼𐉽𐉾𐉿𐊀𐊁𐊂𐊃𐊄𐊅𐊆𐊇𐊈𐊉𐊊𐊋𐊌𐊍𐊎𐊏𐊐𐊑𐊒𐊓𐊔𐊕𐊖𐊗𐊘𐊙𐊚𐊛𐊜𐊝𐊞𐊟𐊠𐊡𐊢𐊣𐊤𐊥𐊦𐊧𐊨𐊩𐊪𐊫𐊬𐊭𐊮𐊯𐊰𐊱𐊲𐊳𐊴𐊵𐊶𐊷𐊸𐊹𐊺𐊻𐊼𐊽𐊾𐊿𐋀𐋁𐋂𐋃𐋄𐋅𐋆𐋇𐋈𐋉𐋊𐋋𐋌𐋍𐋎𐋏𐋐𐋑𐋒𐋓𐋔𐋕𐋖𐋗𐋘𐋙𐋚𐋛𐋜𐋝𐋞𐋟𐋠𐋡𐋢𐋣𐋤𐋥𐋦𐋧𐋨𐋩𐋪𐋫𐋬𐋭𐋮𐋯𐋰𐋱𐋲𐋳𐋴𐋵𐋶𐋷𐋸𐋹𐋺𐋻𐋼𐋽𐋾𐋿𐌀𐌁𐌂𐌃𐌄𐌅𐌆𐌇𐌈𐌉𐌊𐌋𐌌𐌍𐌎𐌏𐌐𐌑𐌒𐌓𐌔𐌕𐌖𐌗𐌘𐌙𐌚𐌛𐌜𐌝𐌞𐌟𐌠𐌡𐌢𐌣𐌤𐌥𐌦𐌧𐌨𐌩𐌪𐌫𐌬𐌭𐌮𐌯𐌰𐌱𐌲𐌳𐌴𐌵𐌶𐌷𐌸𐌹𐌺𐌻𐌼𐌽𐌾𐌿𐍀𐍁𐍂𐍃𐍄𐍅𐍆𐍇𐍈𐍉𐍊𐍋𐍌𐍍𐍎𐍏𐍐𐍑𐍒𐍓𐍔𐍕𐍖𐍗𐍘𐍙𐍚𐍛𐍜𐍝𐍞𐍟𐍠𐍡𐍢𐍣𐍤𐍥𐍦𐍧𐍨𐍩𐍪𐍫𐍬𐍭𐍮𐍯𐍰𐍱𐍲𐍳𐍴𐍵𐍶𐍷𐍸𐍹𐍺𐍻𐍼𐍽𐍾𐍿𐎀𐎁𐎂𐎃𐎄𐎅𐎆𐎇𐎈𐎉𐎊𐎋𐎌𐎍𐎎𐎏𐎐𐎑𐎒𐎓𐎔𐎕𐎖𐎗𐎘𐎙𐎚𐎛𐎜𐎝𐎞𐎟𐎠𐎡𐎢𐎣𐎤𐎥𐎦𐎧𐎨𐎩𐎪𐎫𐎬𐎭𐎮𐎯𐎰𐎱𐎲𐎳𐎴𐎵𐎶𐎷𐎸𐎹𐎺𐎻𐎼𐎽𐎾𐎿𐏀𐏁𐏂𐏃𐏄𐏅𐏆𐏇𐏈𐏉𐏊𐏋𐏌𐏍𐏎𐏏𐏐𐏑𐏒𐏓𐏔𐏕𐏖𐏗𐏘𐏙𐏚𐏛𐏜𐏝𐏞𐏟𐏠𐏡𐏢𐏣𐏤𐏥𐏦𐏧𐏨𐏩𐏪𐏫𐏬𐏭𐏮𐏯𐏰𐏱𐏲𐏳𐏴𐏵𐏶𐏷𐏸𐏹𐏺𐏻𐏼𐏽

Identifiers and Reference Numbers

[illegible]

Market Participant Identifier

[illegible]

Document (PIPE) Reference Number

Ō[& { ^ } ōā^ cā|• āā^Ā^)^|æ̃āā^ Ā@Ā|ā ā æ|Ā Ā@Ā| [& { ^ } ēV@Ā|{ æĀ
[Ā@Ā| [& { ^ } ōā^ cā|Ā ā|Ā^Ĥ

Deleted: F

Deleted: T æ&@G

[illegible]

5.1 Service Transaction Requests

Introduction

[illegible]

À
 ÛÜ•Áœ^Á æ^Á~|]•••Ë &^aa^Áœ•^Á Áœ&{ }|ä@œÁ||, ä^Á•ä^Á•Á
 æœä^Á•Á^ çäa^Á/ÖÖÜ/Áœ@Áç^Á ÁœÖ{ }•{ ^!q Áœ&~} dÁ
 •Á æœœ ^Á ÁæÁ~]]|^Á[[Á•c{ ÁœÁ ÁœœÁ^} â|!Á
 •Á æœœ ^Á ÁæÁ~]]|^Á[[Á^ÁœÁ^} â|^Á Áœ[@|ÁœÁ^} â|!Á
 •Á æœœ ^Á ÁæÁ~]]|^Á[[ÁœœÁ^} â|^Á Á•c{ ÁœÁ
 •Á æœœ ^Á Áä|ä^Á} Á|^ÁœÖ{ }•{ ^!Á Áä
 •Á æœœ ^Á Á@Ö{ }•{ ^!Á^!çä^Áä^Á•Á @} ÁœœÁ^} â|^Á|^çä^Á
 •^!çä^Á

[illegible][illegible]

• Á áššá^æð } Á Áššá|æÁ|ā dÁ
• Á ášš@ *^Á Áššá|æÁ| Áššáæç^Á| dæðð @|^Áš| |ææ|^Á
• Á áššæ • ^Á Áššó[] • { ^Áššš~ } šæç ^^ Á[[[•Áš| dæðð^Ź Dæš āÁ
• Á áššæ • ^Á Áššó[] • { ^Áššš~ } šæç ^^ Á|æÁ|ā • Ä

Validation of STRs

[illegible][illegible]

Deleted: Q Áãããã } Êã

Deleted: à~!ā*Á@Á^•ă} Ā Ā@Á
•&@{ æ

Deleted: F

Deleted: T æ&@G

[illegible][illegible]

U;æ^Á[äö!æ•Á æß^Á[óñ^Á^*æü^Áæ~•Æq äÄ æß^Á^`ab&ø Ää æß^Á
æ!^^äß^Á@Äæð•Æ

Y @|Äq |ææ^Æ@&}dæö^ ^æäaä^Ä@Ä^ä|Ä Ä @æ@Ä|æÄ[äóÄ
àä^*æææ@ä ~•óñ^æð^æÄÄ@Ä|^æäaÄÖ-æð^ÄæÆ

GRANDFATHERING CLAUSE

[illegible]

Á
 Þ [Á [[^ Á @ Á Í Ú Á Á Á [ä ö ^ æ Á ~ ^ . Á / ä • æ ä } • Á æ Á ^ Á à { æ ^ á Á Á
 X ^ } ä [Á Á Á á ^ Á Ö ä ä ~ ä [Á Á Á á * Á Á • ä • Á æ Á

[illegible]

Deleted: F

Deleted: T æ&@G

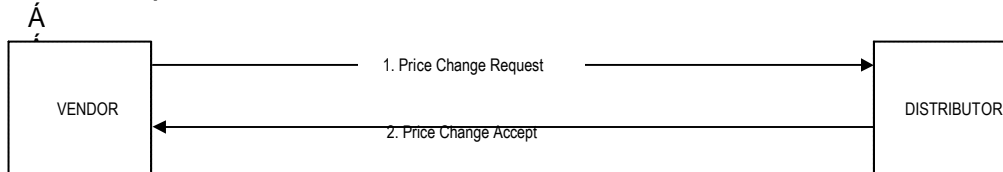
Á

Grandfathering Clause for Distributors Acceptance of Rate Changes

[illegible]

TRANSACTION FLOW STR2
Price Change - Accept

In this scenario, a Price Change Request with valid, complete information is submitted. The STR is accepted.



Á

Á

Flow:

FĀ X^ à [Ā Ā^ à (ā āāāā Ā Ā Ā @ * ^ Ā Ā^ ^ Ā • Ā
GĀ Ōāāā q [Ā^) ā • Ā Ō Ā Ā Ā @ * ^ Ā Ā^) ā āāāā Ā • Ā

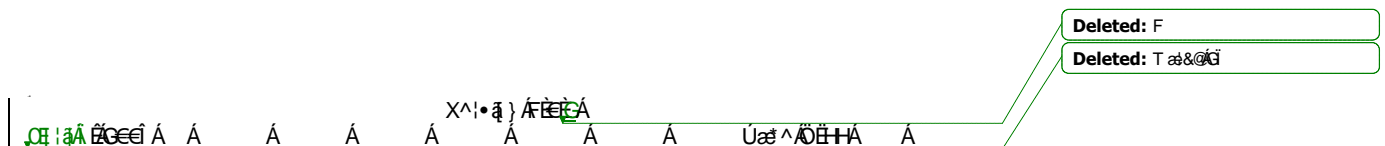
Á

A
B.

Rules: Ü^~!ÁĀĈčĚ

Exceptions: $\mathbb{P}[\]^\wedge$

Á



[illegible]

Deleted: Ð^, Å~^&ca^Äœ^

Deleted: 𐤀𐤓𐤕

Deleted: 𐤀𐤓𐤕

[illegible]

Deleted: $\{A^1, A^2\}$ $\{A^1, A^2\}$

Deleted: 𐤕𐤓

Deleted: 𐤀𐤓𐤁𐤏

(b) Moving a Consumer Account between Contracts (Contract Transfer)

[illegible][illegible][illegible]

(c) Moving a Consumer Account between Price Points (Price Point Transfer)

[illegible][illegible]

Á
Y @!^Á~ ¯áâÄÖÜ/VÜ/!æ•æç} Á ~ ¯á^Á&ä¯áÁ [Áæ^Áœ] Áí Á
8æ} áæÁæ•ÁíÁ Á@Á&ç^ÖæÁ-Á@Á/!æ•æç} Ä

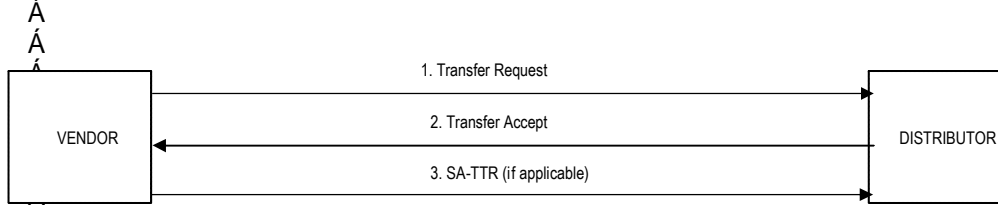
Deleted: F

Deleted: T æ&@G

[illegible]

TRANSACTION FLOW STR3

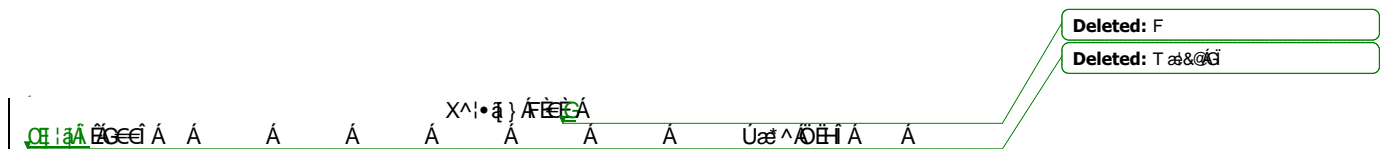
In this scenario, a Transfer Request with valid, complete information is submitted. The STR is accepted.



Á
Flow:
 FÉ X^) à[!Á~à{ ~~æ~~æææÁ/æ)•-!Ä~^~^•.É
 GÉ Öäcā q[!Á^) ä•Ä@Ä/æ)•-!ÖB&^) ö ~~æ~~ Á &æ^) äæ/ææ)•É
 HÉ X^) à[!Á~à{ ~~æ~~ÄÜÉ/VÜÄV^!{ äæ/Ä/æ)•ææ} Ä~^~^•.Ö/æ) |ææ/Ä[Ä••Äæ Ä[Ä
 &æ^) äæ/ææ)•Ä[ä[Ä Ä@Ä-Ö&æ/ÄæÄ

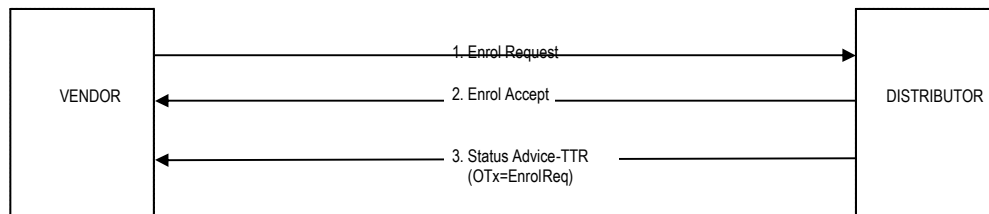
Rules: $\bar{U} \wedge \neg A \vdash A \wedge \neg \bar{A}$

Exceptions: V@Áā•āā ÁĀ[ō^ū]|{ ^) ċăĂ^Ávāā•Śā*•đ] Œāā āēĀ[ō^Á
ā]|{ ^) ċăĂ^Śāā@^!Ávāā•Ė



TRANSACTION FLOW STR7
Enrol/Cancel by Distributor (Before Effective Date)

In this scenario, the Consumer signs a contract with Vendor A. Vendor A sends the Enrol Request to the Distributor. The Distributor sends an Enrol Accept and tags the Transaction as pending. Before the Effective Date, the Distributor is contacted by the Consumer who wishes to cancel the Enrol Request.



Á
Á
Á
Á

*****Application Advice Accept or Reject must be sent for all Status AdviceTransactions to indicate the Transaction has been processed.**

Flow:

[illegible]

Á
Á

Rules: \dot{A}

FEA 05 Á) : [Á ~ ~ ^ • 04 æ Á [04 Á Á { 3 æ á Á 04 Á Á Á æ • Á Á @ Á ~ ^ & Á Á Á æ Á Á

Exceptions:

Exceptions: V@Öäã d l Ä æ Å Æ ^ ^ Ä Å | ä æ Å Ö | | | Ä ^ ^ ^ ^ Ö / ä • æ d } Ä æ Å Ö Ä
] ^ ä ä ö æ { { ^ } & • Ä l Ä æ • Ä l Ä l Ä Å Ö ^ & ^ Ö æ Ä
Ä

Deleted: F

Deleted: T æ&@G

[illegible]

Õ Ö Œ Û À Ù X Ç À É Õ Ü Ò Ò ò Þ V Á

À
ÒÓVÀUcæ åæå•ÄÖ[& { ^} Ä

ŒÚÒǾÖŸÁÖÁ

Change of Effective Date

OFO:[] ÄÜ~^••ä & ä^•Ä@Ä-Λ&ä^Äæ^Ä Ä@Ä:[] EÄV@Ä-Λ&ä^Äæ^Ä Ä@Ä
Ö:[] ÄÜ~^••ä æÄ^Ä&(ä)^•äÄ^Ä@Ä ä ä ä ä^Ä ä ä c Ä@[*] QÄÜæ^•ÄÄçÄÄÄ
W äæ^Ä/i(ä)•äc}ÄJCEW/DÄ/i(ä)•äc} EÄ

Deleted: ɒ^, Ȧ~^&ca^Äöæ^

Deleted: 𐤀𐤕𐤕

Deleted: F

Deleted: T æ&@ÁĜ

[illegible]

$\text{CH}_3\text{I} \xrightarrow{\text{H}_2\text{O}} \text{CH}_3\text{OH}$

Öä Ä Ä@ÄÜVÜE/UÜE&~||^| öä äÄ ^| ää *Ä^| ä[!•Ä ä|ÄÄ[cää ää cää ÜVÜE
Ö@ä *Ä| | • { ^|Ä -|-|{ ää } Ä

Deleted: å

Á

Request and Response

[illegible]

Deleted: , æ Á ^ } cæ & cæ æ | ^ Á & | | ^ & o Á

Deleted: ã

Á

Rules

[illegible]

Deleted: Ú

Deleted: ^

Deleted: a

Deleted: ^~^&c^|^Á

[illegible]

Á

[illegible]

Á

[illegible]

Á

Á

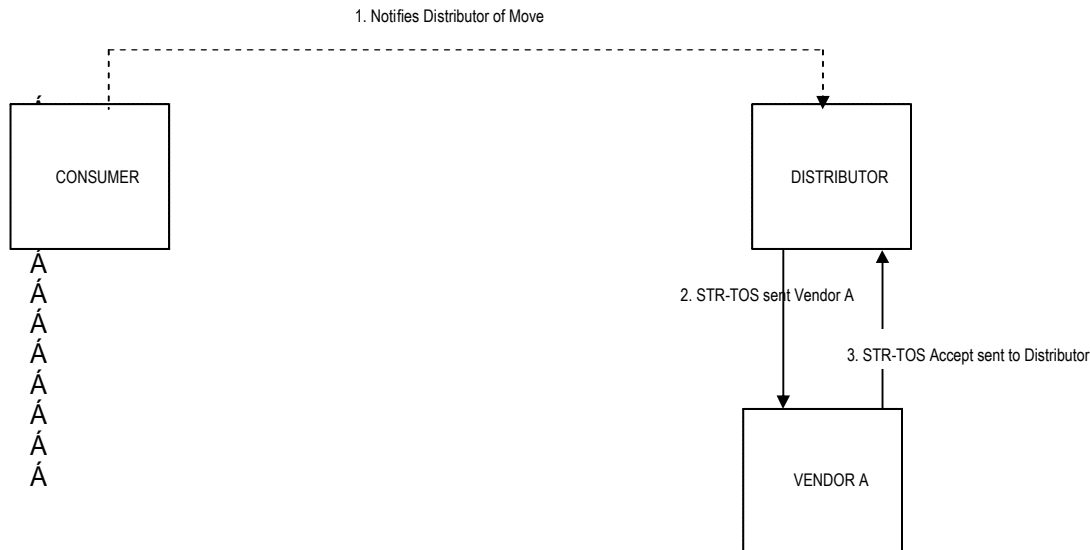
Deleted: F

Deleted: T æ&@G

[illegible][illegible]

TRANSACTION FLOW STRnn-1
Termination of Service
Move Outside of Distributor s Territory

In this scenario, a Consumer notifies the Distributor that he is moving out of the Distributor s territory. The flow would be the same regardless of the TOS reason.



Flow:

FEA Ö[]•~{ ^!Ä[cä•Öäcä q!Äcä@ÄÄ [cä*Ä~•ä^Ä-Ä@Öäcä q!qÄ~!ä!~Ä
GA Öäcä q!Ä^} ä•Äq UVÜB^!{ äää} Ä-Ä^!cäÄVUÜDÄ Ä@Ä^} ä[!Ä-Ä&[!Äq äp!Ä^} äp*Ä
X^} ä[!Ä
HA X^} ä[!GDA^} ä•ÄVUÜB&^} dÄ Ä äääÄcä@Äcä •ääÄ} Ä äÄ&qäÄq äÄÄ[!Ä&Ä
Ä

Rules:

FEW@Ä^!{ äää} Ä-Ä^!cäÄ q!Ä&&[Ä @c@!Ä!Ä[cä@Ä^} ä[!GDA^} ä•ÄVUÜB&^} dÄ

Exceptions: P[]^Ä

Ä
Ä
Ä

Formatted: Indent: Hanging: 0.33",
Numbered + Level: 1 + Numbering
Style: 1, 2, 3, + Start at: 1 +
Alignment: Left + Aligned at: 0.08"
+ Tab after: 0.33" + Indent at:
0.33", Tabs: 0.25", List tab + Not at
0.33"

Deleted: F

Deleted: T ä&qÄ

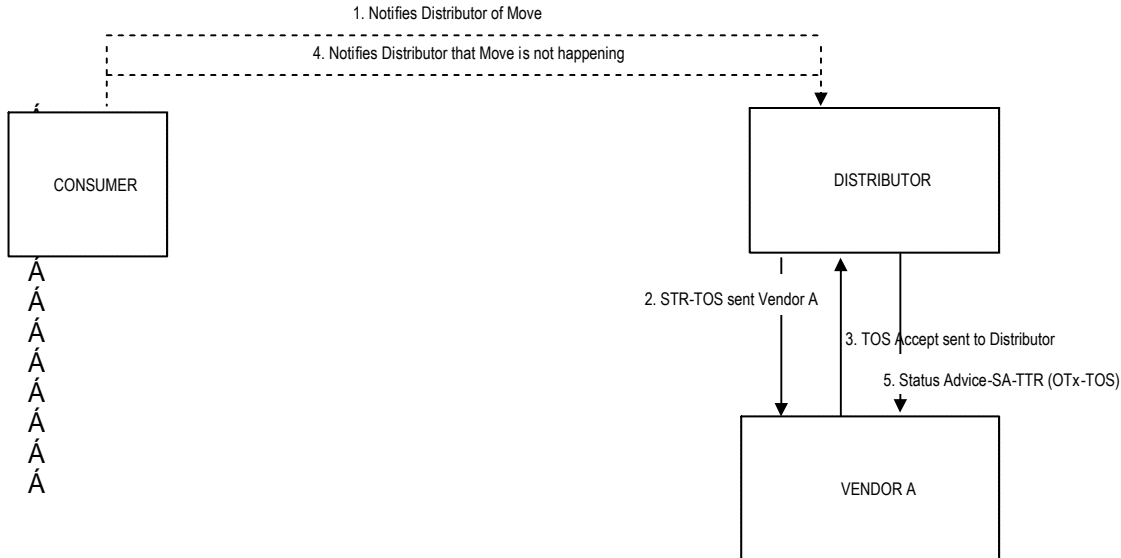
FEA Ö[]•~{ ^!Ä[cä•Öäcä q!Äcä@ÄÄ [cä*Ä~•ä^Ä-Ä@Öäcä q!qÄ~!ä!~Ä
GA Öäcä q!Ä^} ä•Äq UVÜB^!{ äää} Ä-Ä^!cäÄVUÜDÄ Ä@Ä^} ä[!Ä-Ä&[!Äq äp!Ä^} äp*Ä
X^} ä[!Ä
HA X^} ä[!GDA^} ä•ÄVUÜB&^} dÄ Ä äääÄcä@Äcä •ääÄ} Ä äÄ&qäÄq äÄÄ[!Ä&Ä
Ä

TRANSACTION FLOW STRnn-2

Termination of Service

Pending TOS Cancelled

In this scenario, a Consumer notifies the Distributor that he is moving out of the Distributor s territory but subsequently cancels the move request with the Distributor.The flow would be the same regardless of the TOS reason.



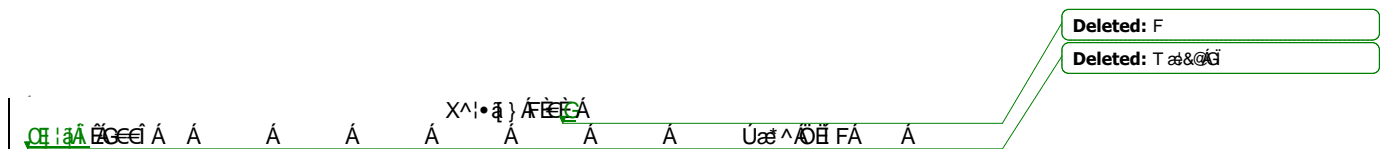
Flow:

FÄ Ö[]•~ { ^!Ä[cä•Öä dā q!Äöä/ÄÄ [çä*Ä~•ä^Ä-Ä@Öä dā q!qÄ!!ä!^Ä
GÄ Öä dā q!Ä^)ä•ÄÄ ÜVÜÄ/!{ ä ää }Ä-Ä^!çä^ÄVÜÜÄ Ä@Ä^ä[!Ää äp!Ä^ä ää*Ä^ä[!Ä
HÄ X^ä[!Ä^ä•ÄÄVÜÜÄB&^!çä ä ää•Äöä/Ääç•äçä }Ä ä Ä^&ä^äÄä äÄ!!^&Ä
!Ä Ö[]•~ { ^!Ä[cä•Öä dā q!Ä!ä!Ä!Ä)Ä@Ä-Äçä^ÄäÄ-Ä@ÜVÜÄVÜÄöä/ÄÄ[Ä
[]*^!Ä[çä*Ä
!Ä Öä dā q!Ä^ä•ÄÄ ÜVÜÜÄ Ä@Ä^ä[!qÄ!{ ä ää*Ä@Ä^ä ää*ÄVÜÜÄVÜÜÄ

Rules: Ä

Exceptions: B[]^Ä

Ä
Ä
Ä

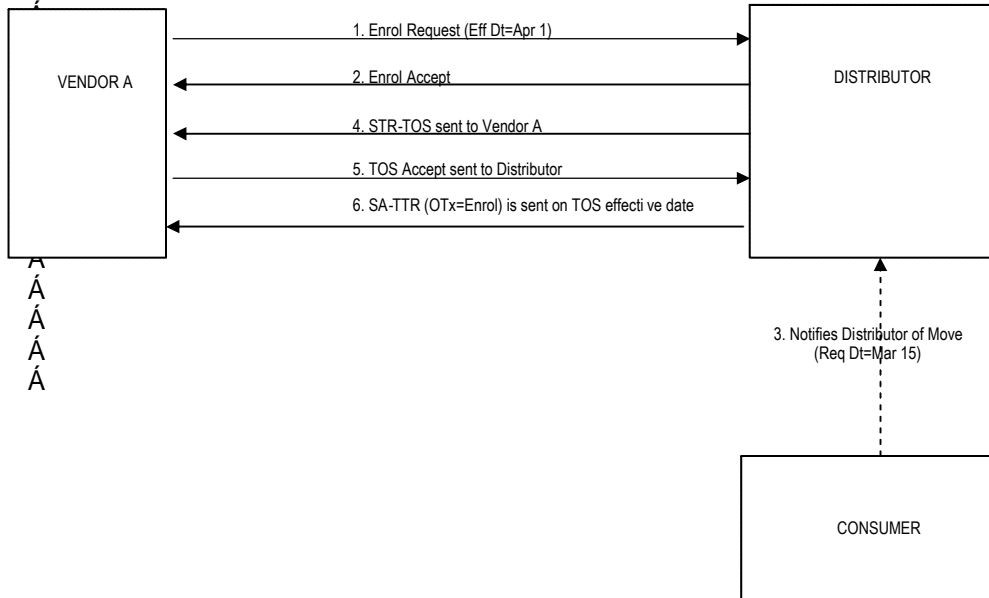


TRANSACTION FLOW STRnn-4

Termination of Service

TOS Causes Pending Enrol to be Terminated

In this scenario, a Consumer notifies the Distributor that he is moving out of the Distributor s territory with an effective date that precedes the effective date of a pending enrol request by a Vendor. The flow would be the same regardless of the TOS reason. The flow would also be the same in the event of a pending Transfer request in which the Transfer effective date is after the requested TOS date.



Flow:

FEÄ X^} ä[!Ä^} ä•ÄÖä d !ÄÄ^~^•ÖÄ Ö) ! !ÄÖ[]•~{ ^!ÄÄ ÄÄ^, ÄÜ[!Ä~&Ö^ÄÖ !äF^Ä
 GEÄ Öä d~ d !Ä^} ä•ÄÄ Ö) ! !ÖÖ&&^} ÖÄ Ä^} ä[!Ä äÖÄ Ä! Ääö•Ä Ä^&ä ÖÄ ÄäÄÄÄVÜÄ
 HÄ Ö[]•~{ ^!Ä[ää•ÄÖ Öä d~ d !ÄÖÖÄ/ÄÄ [çä*Ä^•ÖÄÄ ÄÖÖä d !qÄ ! !Ä^} Ä
 T ä&ÖÄ ÖÄ
 !Ä Öä d~ d !Ä^} ä•ÄÄ ÄVÜÄ^!{ ä ää} Ä Ä^!çÄÄÄVÜÜÄ ÄÖÄ^} ä[!Ä
 !Ä X^} ä[!Ä^} ä•ÄÄVÜÜÖ&&^} ÖÄ Ä ääÄÄÄÖÄÄÄÄÄ•ää} Ä äÄ^&ä äÄÄ ÄÄ ! !^&Ä
 !Ä Öä d~ d !Ä^} ä•ÄÄÖÄVÜÄ Ä^!{ ä äÄÄÄÖ) ! !Ä/ä•ää} Ä } ÄÄÄ~&ä ÄÄÄ ÄÖÄ
 ÜVÜÜVÜÄ

Ä

Rules: Ä

FEÄ VÖÄ^!{ ä ää} Ä Ä^!çÄÄÄ ÄÄ&& !Ä @Ö!Ä !Ä[ÖÖÄ^} ä[!Ä^} ä•ÄÄVÜÜÖ&&^} dÄ

Ä

Exceptions: p[]^Ä

Ä

Ä

Deleted: F

Deleted: T ä&ÖÄ

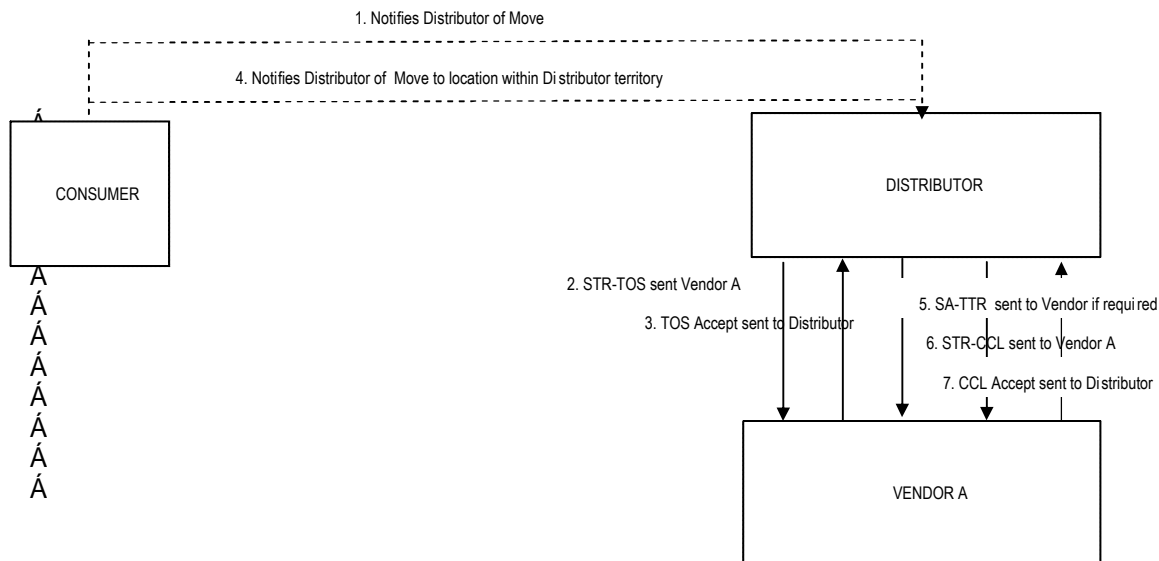
ÖÄ !Ä ÖÖÄ Ä Ä Ä Ä Ä X^!•ä } Ä FEÄ
 Uä^ÖÄ HÄ Ä

TRANSACTION FLOW STRnn-5

Termination of Service

Pending TOS replaced by a Change Consumer Location

In this scenario, a Consumer notifies the Distributor that he is moving out of the Distributor's territory. Subsequently, but prior to the 6th day following the move-out date, the Distributor becomes aware that the move-in location is actually within the Distributor's territory. The Distributor will issue a Change Consumer Location Transaction and issue a Status Advice-Terminate Transaction Request to cancel the STR-TOS if the Consumer's notice is received prior to the effective date of the STR-TOS.



Flow:

[illegible]

Rules: Ü^~|Á Á^cdÄ

Á

Exceptions: $\mathbb{P}[\cdot]^A$

Á

Deleted: F

Deleted: T æ&@G

X^!•ā } ÁFÈÈÁ

œ | ä Å Æ Ç Á Á Á Á Á Á Á Á Á Ú æ ^ Ö Æ I Á Á

5.nn2 STR Reconnection of Service (ROS)

 \bar{A}

Definition/purpose

[illegible]

~~Ĥ Ō } • ^ | Á ^ æ ĉ æ • Á ^ | ç æ ^ Á || | . ā * æ @ • æ æ ā & | } ^ & Ō | Á [] Ě
 | æ { ^ } Ċ~~

* Ě Ō { } • { ^ Ā Ā c̣ } • Ā Ā æ ^ Ā 8 æ Ā Ā || Ā ā * Ā Ā @ • Ā Ā Ā ā & { } ^ & d Ā

Á

Flow

V@A@a•aa@a/A@a@a@a/A/A@O@a@a d/A@aA^/A/A@A^/a|/A/A^&|a@aA
c@A^A^A^|c@aA|a^|A|A@A^&|}^&a|/A/A^&a@a@|&••^aA/A@A
O@a@a d|/A

 \bar{A}

General Description of Data

V@&+{|{ aæ } A^}oA@Ä^&}}^&ca}|Ä-Ä^|cæÄäæ•æca}|& &~ ä•Ä@Ä
Öä dän d |g Ä^ . Äæ&~ }oÄ { à^|ÄÄä |ÄæÄ^Ä

 \bar{A}

Request and Response

V@Aa@a@a|A|^\A|o^~a^Aa|O8&|o^A@A^|a|A|A|}|^|A|O8A|O8&|o^A@A^|a|A|A^a^A|A|a^Aa^A@A^@A^UUA|a^A|Aa^A^A|o^A|&|}|Aa|a^O8A^|a|q|Aa^A^E^UUA|a^*A|Aa&|^|o^|}|a^|A@A|^\A|o^a|}|A|A@A^&a^*A^|a|DQ|Aa^\A|@|A^@A^UUEUU|A|o^8&|^a^A^a^|A^a^A^&|A^A^A^A|O8&|o^a@a@a|Aa|}|&^A^o^A^A^@A^O^A^o^c^|A^@|^a^A^A|a^A^A|^|A^a^a^o^|]|a^A^A^c^|A^A^|o^A^|&A

 \bar{A}

Rules

[illegible]

.Ä ÖÛÖ} .~ { ^i q Äœ Äö dā ~ ä } ÄÜ i ç Ä • Æ ä å | } . ^ ~ ^ i d' Äœ Ä
Ö i {] ^ ä æ ^ ÄÜ i ç Ä • Ä ^ i ^ Ä i { ä æ ä å ä å ÄÜ ÜE / UÜÄ æ Ä ^ i Ä Å @ Ä
X ^ i ä r i Ä

•Á V@ÁUÙÀ~^&ç^ÄÖæ^ÁÁÁÁ@ÁædÄ

•Á v@ÁŒ}•~{ |^|/Á Á^Á *Á^&|}}^&c^áÁ ã@Á Á€Áá•Á:|{ Á@ÀÜÜËÜÜÀ
Ö~^&c~Á ÁœÁ

•Á V@À~^&ç^Äæ^Á Á@ÄÜUÀ@~|áÁ^Á@Áæ^Á Á@Ä[]~{^!qÁ
|^&|}}^&ç|}Ä

Deleted: F

Deleted: T æ&@G

[illegible]

ÒÓVÀÙcæ åæå•ÄÖ[& { ^} ¢Á

[illegible]

Á

Cē: 1. @ & 1 } c • q 1 q a A c A } a a A [1 a c 1 a e 1 a & 1 @ A, a & 1 a A [1 a c 1 A
 { a e 1 } a a A @ A V U E D } || 1 A [1 a e A ^ } a | 1 A & * ^ A @ A ~ & a A a e 1 A A @ A
 U V U E D } || 1 a c a a a a A @ A ^ } a | 1 A A ^ } a | 1 A, a & 1 || & • E A @ 1 a a A [1 c a A
 c a c A 1 ^ • A [1 ^ & 1 a a A @ A } • { ^ A [1 A ~ a a * A A V U A A 1 | 1 A A
 • • c { A a E A ^ ^ } & A V U E D A

Deleted: c^|{ ā æ^Á|Á

 \overline{A} [illegible]

Á

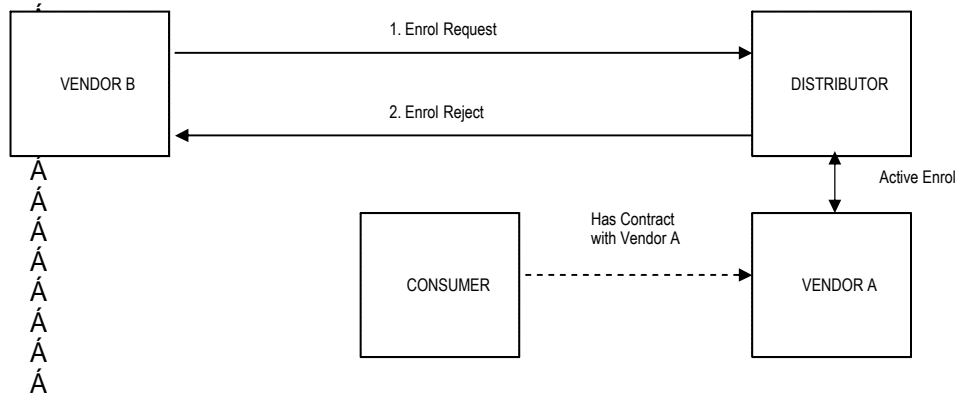
$\text{OE} \rightarrow \text{AA}$

Deleted: F

Deleted: T æ&@G

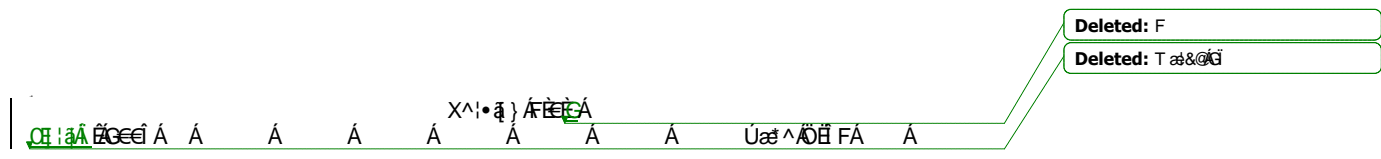
TRANSACTION FLOW STR12
Enrol/Switch-Reject (Insufficient Time for Contest)

In this scenario (Reference Ib), Vendor B submits an Enrol Request 45 days prior to the requested Effective Date. The Distributor has an active Enrol Request for the Consumer from Vendor A (i.e., the Consumer is enrolled with Vendor A). The Distributor rejects the Enrol Request from Vendor B with a reject reason which advises Vendor B that the Consumer is already enrolled and therefore there is insufficient lead time for a contest



Flow:
FÄ X^ ä[!ÖÄ` à{ äÖ) :[|Ü^`~^•ÖÄ | &et^} äää/äæ•Ä |ä |Ä |Ä^~^•^•c äÄÖ~^&et^ÄÖæ FÄ
GÄ Öä d ä` q :!Ä^} ä•Ää Ö) :[|Ü^b &et Ä^} ä[!ÖÄ, äÖÄ Ä | &et^} äää/äæ•Ä |ä ääää *Ä@Ää] |äää|^Ä
!^b &Ä^æ [] FÄ
X^ ä[!ÖÄ` äÄ^~^ à{ äÖ) :[|Ü^`~^•ÖÄ | &et^ÄÖ~^&et^ÄÖæ Ä | &et^ÄÖæ Ä^æ Ä^æ •Ä |Ä@Ä` c :^Ä
Q@Äcä äääÄÄ | &et^} äää/äæ•Ä |` •ÄÄ^&et^} äää/äæ•Ä |Ä@Ä | } c•ÖÄ^!ä äÄ |` •Ä &et^} äää/äæ•Ä
[!Ä |! &^•ä *ÖÄ
Ä

Rules: P[]^Ä
Ä
Exceptions: P[]^Ä
Ä
Ä

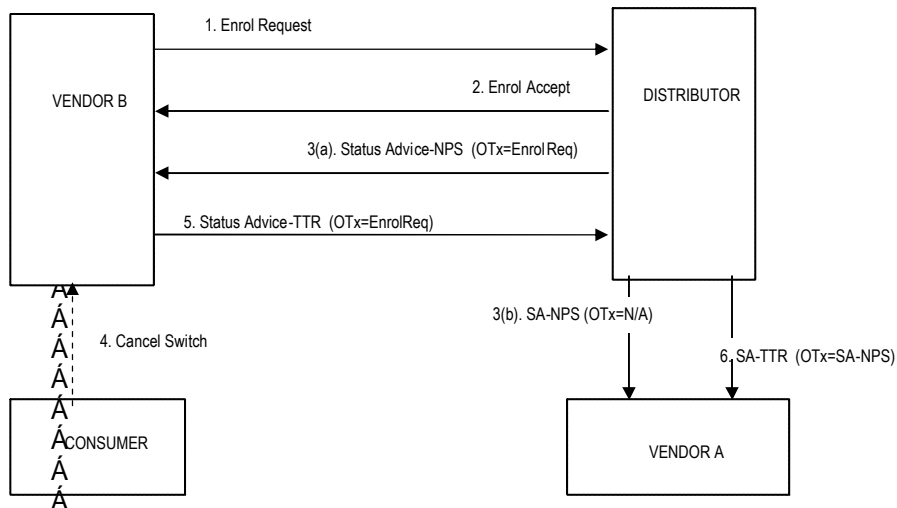


$\text{CH}_3\text{I} \xrightarrow{\text{H}_2\text{O}} \text{CH}_3\text{OH}$

Á

TRANSACTION FLOW STR16
Enrol/Switch/Cancel (During Contest Period)

In this scenario (Reference Vb), the Consumer is enrolled with Vendor A. Vendor B has sent in the Enrol Request to the Distributor. Consumer cancels the switch during the 30 calendar day Contest Period by notifying Vendor B. Vendor B cancels its Enrol Request with the Distributor. The Distributor then notifies Vendor A that the switch has been cancelled.



*****Application Advice Accept or Reject must be sent for all Status AdviceTransactions to indicate the Transaction has been processed.**

Flow:

[illegible]

Rules:

FEA Ua & Aca & Aa ^ aa ^ A ^ [[K ^) d ^ aca ^ a [/ Aca ^] r Aa Uca ^ Aca & Aa ^ { a ae ^ A / a ^ aca } A
Ü ^ ~ ^ . aca Uca / Uca A ^ a ^ a

Á

Exceptions: $\vdash \{ \}^\wedge$

Deleted: F

Deleted: T æ&@G

$\text{CH}_3\text{I} \xrightarrow{\text{H}_2\text{O}} \text{CH}_3\text{OH}$

Õ Ö Œ Û À Ù X Ç À É Õ Ü Ò Ò ò Þ V Á

À
ÒÓVÀUcæ åæå•ÄÖ[& { ^} cÄ

œúúòþ öóáöá

i Æ Öäcā q i A b 8 o A @ Ü cæ • Ü Ç a ç A A a o h A H j | B e a i | Ü Ç a ç A Ü A b 8 d f A ^ a @ i A ^ i | A a e A
 c i | q æ A i A e & i A @ A, æ @ æ c i A @ A | c • c i A i q a h A ç A i A a A @ A, æ @ c æ A A ^ i A
 A A c A a Æ

Deleted: \vdash

Deleted:] æc Á

Á
 V@Á[]~{^!Á a!Á, ā&ā!Á^}ā!|Á}Á@Á~^•c!Á-!&ā!Áæ!Á!Á@ÁÜVÜË)!|!Á
 Á

Rules:

FEA G@O } • { ^ Á ^ Á ^ Á ^ Á } c a s o ^ Á } a [/ A z e e ^ Á @ ^ Á } c • o ^ Á ^ Á a ^ Á ^ Á ^ Á ^ Á } a [/ A z [^ Á Á ^ Á ^ Á ^ Á @ ^ Á } • { ^ Á ^ Á ^ Á ^ Á c a d a q i E A

GÄ V @ Ä I } • { ^ / Ä Ä | Ä | Ä | ä ä Ä | { & } c ä ä * Ä @ Ä ä ä | Ä | Ä Ä ^ ^ • c ä ä c ä * Ä Ä ä Ä
• ~ | | | Ä | { & ä ^ } ä | Ä Ä • c | Ä ä Ä

Formatted: Bullets and Numbering

Á
 Exceptions: $\vdash \{ \}^\wedge$
 Á
 Á

$\alpha \in \mathbb{A}$
 $\beta \in \mathbb{A}$
 $\gamma \in \mathbb{A}$
 $\delta \in \mathbb{A}$
 $\epsilon \in \mathbb{A}$
 $\zeta \in \mathbb{A}$
 $\eta \in \mathbb{A}$
 $\theta \in \mathbb{A}$
 $\iota \in \mathbb{A}$
 $\kappa \in \mathbb{A}$
 $\lambda \in \mathbb{A}$
 $\mu \in \mathbb{A}$
 $\nu \in \mathbb{A}$
 $\xi \in \mathbb{A}$
 $\omicron \in \mathbb{A}$
 $\pi \in \mathbb{A}$
 $\rho \in \mathbb{A}$
 $\sigma \in \mathbb{A}$
 $\tau \in \mathbb{A}$
 $\upsilon \in \mathbb{A}$
 $\phi \in \mathbb{A}$
 $\chi \in \mathbb{A}$
 $\psi \in \mathbb{A}$
 $\omega \in \mathbb{A}$
 $\alpha \in \mathbb{A}$
 $\beta \in \mathbb{A}$
 $\gamma \in \mathbb{A}$
 $\delta \in \mathbb{A}$
 $\epsilon \in \mathbb{A}$
 $\zeta \in \mathbb{A}$
 $\eta \in \mathbb{A}$
 $\theta \in \mathbb{A}$
 $\iota \in \mathbb{A}$
 $\kappa \in \mathbb{A}$
 $\lambda \in \mathbb{A}$
 $\mu \in \mathbb{A}$
 $\nu \in \mathbb{A}$
 $\xi \in \mathbb{A}$
 $\omicron \in \mathbb{A}$
 $\pi \in \mathbb{A}$
 $\rho \in \mathbb{A}$
 $\sigma \in \mathbb{A}$
 $\tau \in \mathbb{A}$
 $\upsilon \in \mathbb{A}$
 $\phi \in \mathbb{A}$
 $\chi \in \mathbb{A}$
 $\psi \in \mathbb{A}$
 $\omega \in \mathbb{A}$

Deleted: F

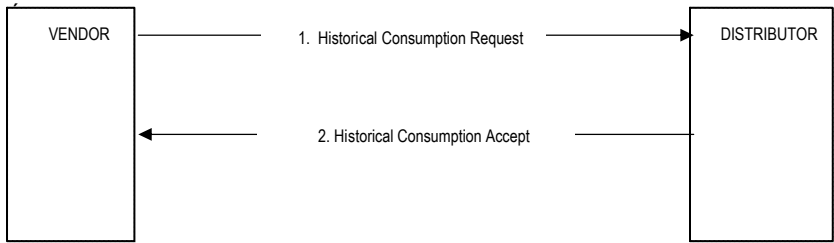
Deleted: T æ&@G

TRANSACTION FLOW STR22

Historical Consumption

Ä

In this scenario, the Vendor sends an Historical Consumption Request. The Distributor is able to respond with the historical consumption within 14 calendar days.



Flow:Ä

FÄ X^} ä[!Ä~ à(~Ä) Ääq!äâÖ[]•~{]q}Ä^~^•dÄ

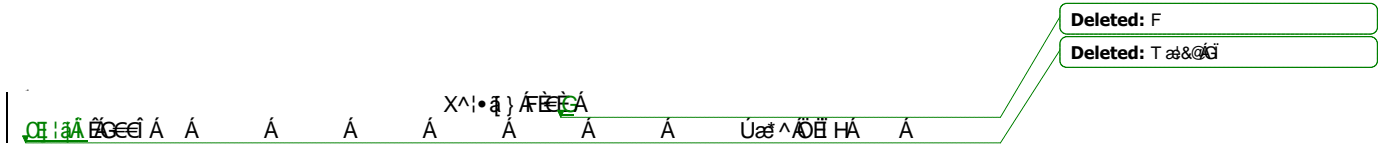
GÄ Öäcä q!Ä äö!•Ääâä äÄ^c!}•Ä@Ääq!äâÖ[]•~{]q}Ä&^] dÄ 8!~ ää*Ä@Ä

!^~^•cäâäâÄ[Ä@Ä^} ä[!Ä äöÄÄÄ &ä^} ääÄäâ•Ä Ä^&ä q!Ä@Ä^~^•dÄ

Rules: Ü^Ä!Ä ÄcdÄ

Ä

Exceptions: Þ[]^Ä

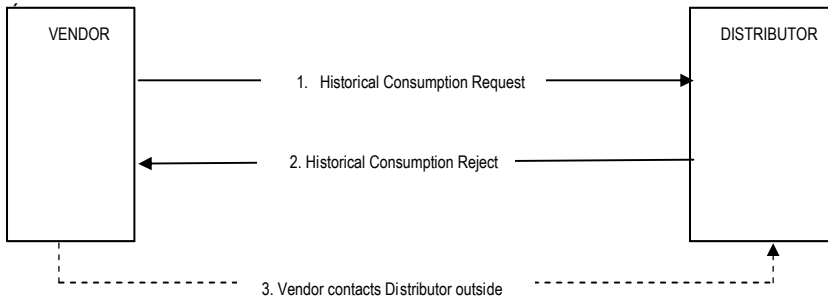


TRANSACTION FLOW STR23

Historical Consumption

Ä

In this scenario, the Vendor sends an Historical Consumption Request, but the Distributor is unable to provide the historical Consumption information within 14 calendar days.



Flow:Ä

FÄ X^} ä[!Ä~à{ ä/ÄPäq!äcVÖ[]•~{] cä } ÄÜ^~^•cV!äq•ääcä } Ä
GÄ Öädä~ q!Äcä }[ö!| cä^Äcä q!äcVÖ[]•~{] cä } Äääcä äcÄ@Ä!Äcä^} äääÄcä Äq ^+äq ^Ä
•[Ä^} ä/ÄPäq!äcVÖ[]•~{] cä } ÄÜ^b&cÄ äcÄÄ!Äcä^} äääÄcä•Ä-Ä^&äq ö!Ä@ÄÜ^~^•dÄ
HÄ X^} ä[!Ä q!Ä[]|, Ä] Ä äcÖädä~ q!Ä~cä^Ä@ÖÖVÄ^•c{ Äcä äÄ~à{ äää^, Äpäq!äcVÄ
Ö[]•~{] cä } ÄÜ^~^•cV!äq•ääcä } Ä äcÄ@Äc!^^äÄ][] Äq ^+äq ^Ä

Rules: Ü^~^!Ä Äc dÄ

Ä

Exceptions: P[]^Ä

Ä

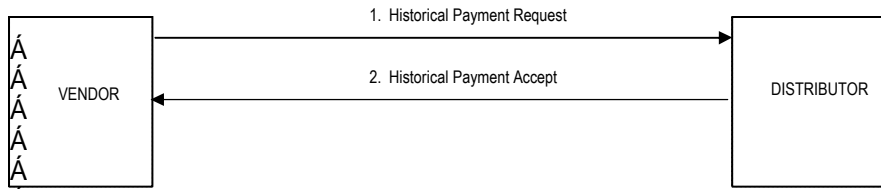
Ä



TRANSACTION FLOW STR24

Historical Payment

In this scenario, the Vendor requests payment profile data which can be supplied within 14 calendar days.



Flow:

FĖĀ X^) ā[ĨĀ^) ā• Pā q[ȤēĀ Ūē{ ^ } ŪĬ~^• dĀ
GĀ Ōā dā q[Ĩāē@!• Āāēēē āĀ^) ā• Pā q[ȤēĀ Ūē{ ^ } ūB&] dĀ & āq *ĀĬ~^• cāāēēē ēō Ā
Fl &ē^) āēēēē • Ā Ā^&q ūĀ Ā@ĀĬ~^• dĀ

Rules: Ü^~!ÁĀĈĊǼ

Á

Exceptions: $\vdash \{ \}^{\wedge \Delta}$



ÕÖŒÀÙÒÜXÇÒÁẼÜÒÒT ÒP VÁ

À
ÒÓVÀUcæ åæå•ÄÖ[& { ^} á

ŒÚÒǾÖÝÄÁ

~~@e Á ĩ Á^&|ã•ËQq~~ ãÁ @} Á@Ääcã q|Á] äæ•Ĥ Á^&|ã•Ëq ā|Á^} äÁ@Á
&'||' ō^cāãääãä Ä@Á^} ä[|Á äöá) ^, Ä@ç *^Ä[] •{ ^|Ä[]{| { ää } Á
Ü^~^•dÄ

 \bar{A}
$$\ddot{U}^\vee \mid \wedge \bullet$$

V@Ōā dān q|Ā. }•Ā@Ā+||{ ȳȳ }Ā-Ā&|āĀ^*ȳȳ*Ā@Ō| }•{ ^|ĒĀ
V@Ĥ+|^ȳȳ^ĀĀ Ā@Ōā dān q|&ȳ }•Ā@Ā+||{ ȳȳ }Ā-Ā&|āȳŌȳ*^Ā
Ō| }•{ ^|Ā+||{ ȳȳ }ĀŪ^~^•Ō~•ŌĀĀ^}ŌĀ Ā@Ā^}ā|ĒĀ@Ā^|ȳȳ|ȳ•Ā
@ȳ|Ā|Ā|Ōȳ ȳĀ@Ā^}ā|Ā @Āȳ•ŌȳȳāĀĀ@Ōā dān q|Ā-Ā@&ȳ }•Ā
Ā

V@Â@q^*Â|}•{^|Â|{|{ aq} Â|~^•.â^•.â^Â^•â^â|&|{ { } } Bæ^Â
~|âæ^â|q|{|{ aq} |â^ç ^|) Â@^X^|â|âq ââ@Â dâ q|â|} &^ââ dâ q|â
@æ^â^|âq Â|)| |ÂB&^| dâ|â@â^|âq| |â^â| câ @} Â@Â|)| |â^â| âq^*Â^â
c@Â~^â&q^*Âæ^â/â/â Â@Â^ç|^Dæ ââ @} Â@Â|)| |â/â&q^*Â^â@Â~^â&q^*Â
Öæ^â/â/â Â@Â^ç dâ

 \dot{A}

Q!A@Aæ^!A!A}c^!A@Aôdã`q|A^}â!A@Aô}^*Â[]~{^!A[]{|æ}Á
U^~^!A!A[çA^}â|!A

Á

[illegible][illegible]

Deleted: F

Deleted: T æ&@G

X^{\bullet} \cdot \tilde{a} \} \mathcal{A} \in \mathcal{G}

œ i æ ɛ œ œ á á á á á á á á Úæ ^ œ ð í á á

5.1.7 STR Change Consumer Location

A

Ö^ ã ãã } Ð ~ ! | [• ^ Á

| V@AJVUAZ@ @ ^ ^ A | } . { ^ | S | & @ @ | A | a @ . @ @ | A @ | . . A A | } . { ^ | A | A ^ @ @ | A ^ A | a @ | } . @ A ^ @ @ | A ^ a | A ^ A ^ A | ^ { a ^ A @ } A @ A | } . { ^ | A { [c ^ A ^ @ @ A @ A ^ d a ^ d | q A ^ | c a ^ A | | a | ^ A

A

[illegible]

Á

V@Á[]~{^!E^}á|Á|æ[]•@A[][Á^Á^æ^áÁ @]Á@Á[]~{^!Á
|!|æ•Á•çÁ@ÁOädā q|qÁ^čæÁ||æ|EÜÜVÜEÜ@^Á[]~{^!Á
S|æ[]|Á^•Á|cā|_|^|^|æ[]|^Á@[]~{^!Á Á [čā*Á| |Á@Á^čæÁ
Ü||Á^Á|Á|Oädā q|Á Á@Á^čæÁ||æ|Á-Ä[]|@ÁOädā q|EÜ
UVÜÁÁ^| ä æ|Á-Ä|Ä

Deleted: } [oÁ

Á

Øl. Á

V@ÀUVÜÄ.Â@ *^Â[}•{ ^\Ã &æä } Å Á | ^ Å äæ^ä Å^ Á@ Ää d ä ð | È

Á

OE Á[] Ae Á@ ÁÖä dñ | Á Á[cā ā/ Á@ Á[] • { Á/ Á@ Á@ Á[] • { Á/ Á Á
{ [çā * Á ä@ Á@ ÁÖä dñ | ç Á/ ç Á/ Á/ | Á@ ÁÖä dñ | Á ç Á/ ā@ ÁÜVÜ Á Á
Ö@ * Á Á[] • { Á/ Á/ &@ | Á Á@ Á^ | ä | Á | çāā * Á@ Á [ç/ Á/ Á@ Á [ç^ Á^ Ö
ā@ Á [ç Á^ &@ Á@ Á@ Á^, Á/ ç Á/ Á@ Á/ • • Á@ ā Á@ Á^, Á@ Á/] Ö
| ä/ Á/ Á

Deleted: ^

Deleted: å

 \dot{A} [illegible]

Deleted: ^

Deleted: å

Deleted: }

Deleted: }

Deleted: å

Deleted: ^

Deleted: å

Á

[illegible]

Deleted: 𐐃^, 𐐀~^&𐐃^ 𐐀œ^

Deleted: F

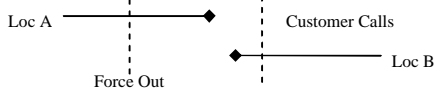
Deleted: T æ&@G

$$X^{\wedge} \mid \bullet \bar{a} \} \acute{A} \acute{F} \acute{E} \acute{E} \acute{G} \acute{A}$$

OE | A E I O U Á À Í Î Ï Ö Ü Æ ^ ° € Á À

1.2.4 Customer Provides a New Address On or After the Move-In Date (Enbridge/Kitchener)

Formatted: Font: 10 pt, Italic



Force Out

À

ÀÀ ÇÀ^È | à&~·ç { ^\À + | { ·À@À çÀÀ À@À@~ ÀÀ^À [çÀ *Àç À@À&~·ç { ^\À À [&ÀÀ] À
ÇÀÀÀÀ·À·È À À@À&~·ç { ^\À + | { ·À@À çÀÀ À ÀÀ [çÀ^~ ÀÀ ÀÀ [ÇÀ^~ ÀÀ
^, ÀÀÀÀÀ·À·À [À [&ÀÀ] ÀÀ

àÀ V@À çÀÀ À^ | à·À@À^ | à [ÀÀ V U ÀÀ | à·À | À à@À@À~ À çÀ^ ÀÀÀÀ À@À [çÀ^~ ÀÀ
&À V@À&~·ç { ^\À + | { ·À@À çÀÀ À À@À^, À [&ÀÀ] À à@À À ÀÀÀ·ÀÀÀ À@À [çÀ^~ À
àÀÀ ÀÀ

àÀ V@À çÀÀ À^ | à·À@À ÇÀ^ | àÀ à *À@À [çÀ^ ÀÀ àÀ [çÀ^~ ÀÀÀ·È^, ÀÀÀÀÀ·À·È^, À
à&~·ç { ^\À + | { à^ ÀÀ àÀ@À~ À çÀ^ ÀÀÀÀ ÀÀ ÀÀÀ ÀÀÀÀ À@À&~·ç { ^\À + | { À
·]] ÀÀ

ÀÀ V@À&~·ç { ^\À |, ·À | À^·ç { ÀÀÀ À [À@À [çÀÀ ÀÀÀÀÀ

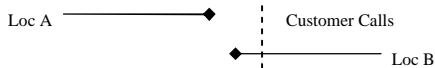
ÀÀ V à@À ÀÀÀ^·à·À·ÀÀÀ·À·À^ | àà *À@À ÇÀÀÀÀ | àÀ@À çÀÀ À^ À@ÀÀ
&~·ç { ^\ÀÀÀÀ | À^ | à [À]] ÀÀ

Formatted: Underline

1.3 Customer Informs Utility of a Move After it Occurs

Formatted: Font: 10 pt, Italic

1.3.1 Enbridge/Kitchener Process



aA V@A:•d{ \A+|{•A@A qA A@A [c^A A aA [c^A`oAe•A aA@A^, A
 || 8eA] AOA
 aA V@A qA A^•a•A OOSA a•aA] A||, a* A@A^|•A AFE A aA@A [c^A A aA A
 aA A [c^A`oAe A^+|8A* A@A c aAe•A A@A@A A:•d{ \A| aAe aA
 8A V@A~8A A aA A@A OOSA a•aA] AFE A aA A^ A A@A A:•d{ \A A
 •, aA@aA A^] a[A^]] D aA A [A aA A aA A^•a* A•Ae A||, a* A@A OOSA
 d a•aA] A
 aA QA A e A@A A:•d{ \A aA|, A^ A^c{ A a A c A^ A@A [c^A A aA A
 ^~8A A A aA A@A OOSA a•aA] A

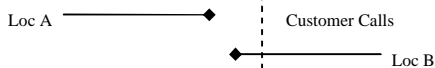
Formatted: Not Highlight

Deleted: H₂F

Formatted: Not Highlight

Formatted: Font: 10 pt, Italic

1.3.2 Union Process



aA V@&•q{^/h+{|•A@ÁqāĀ•A@Á[c^hAqāĀ[c^Ā~āāē•āqāA@Á^, Á
 ||8ēqā}AŌA
 āD V@ÁqāĀ}•ā•AŌŌŠāq•āqā}Ā||, ā•A@Á^•/hAŌŌŌA āqāA[c^ĀāāēĀ
 āqāĀ[c^Ē~āāēĀ^•8qā•A@Á&cāāē•A@Á@&•q{^/hāāēēāĀ
 8D V@A~8qāĀāēĀ•A@AŌŌŠāq•āqā}AŌŌAāāēĀ}Ā@&@&•q{^/hA
 •āqāāĀĀ}ā[Ā~]]DāĀĀ~āqāA@Á[c^ĀāāēĀ
 āD Q@&āēēĀ@&•q{^ĀāĀĀ^Ā~8qāĀĀ[Ā}Ā•c{ĀāēāēāqāA@ÁĀĀĀ
 ~Ā[8ēqā}•Ā&ēē•Ā@ÁqāĀ~oA@&•q{^Ā}Ā}ā[Ā~]]ĀāēāēāqāĀ
 c@Ā[c^hāāēĀ

Formatted: Not Highlight

Deleted: H₂

Formatted: Not Highlight

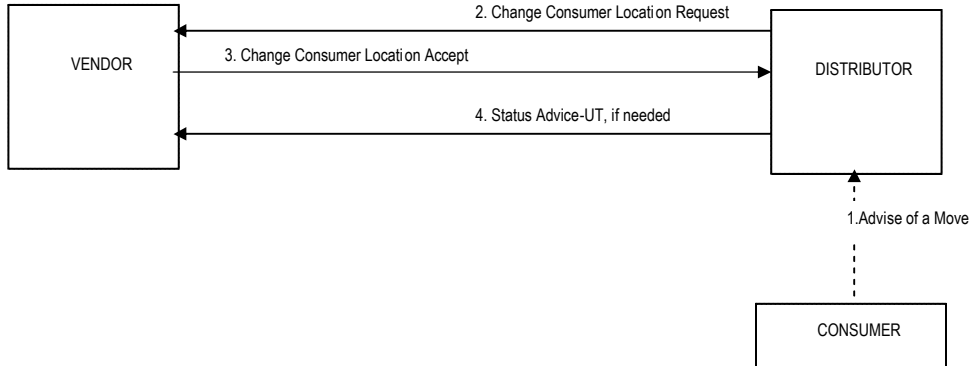
Deleted: F

Deleted: T æ&@Ä

[illegible]

TRANSACTION FLOW STR27 Change Consumer Location

In this scenario, the Consumer notifies the Distributor about the change of location within the Distributor s service territory. The Vendor accepts the change of location.



***Application Advice Accept or Reject must be sent for all Status Advice Transactions to indicate the Transaction has been processed.

Flow:

FEÄ Ö[] •~ { ^\& } cæ•Öä dā~ q !Ä Äcā^Ä -ÄÄ [ç^Ä Äcā^, Ä [&æ] Ä •ä^Ä@Ä~ !!^) Ä
Öä dā~ q !q Ä^!çÄ^Ä~ !!ä !^Ä
GÄ Öä dā~ q !Ä^) ä •ÄÄÖcæ *^ÄÖ[] •~ { ^\& [&æ] Ä~^~^•cä Ä@Ä^) ä !^Ä
HEÄ X^) ä !Ä&&^) cÄ@ÄÖcæ *^ÄÖ[] •~ { ^\& [&æ] Ä~^~^•cä Ä^) ää *Ä@Öä dā~ q !ÄÄÖcæ *^Ä
Ö[] •~ { ^\& [&æ] Ä&&^) dÄP[cÄV@Ä^æ |cÄÄcä@Öä dā~ q !Ä qÄcæ •~ { Ä@Ä^) ä !Ä
æ&&^) cÄ@ÄÖSÄ~^~^•cÄVä •æcä } dÄÄ@Ä^) ä !Ä^&ä^•Äcä !Ä^) ää *Ä@ÄÖSÄ&&^) Ä
cæÄÄ[^•Ä [cÄ ä cÄ Äcä Ä@Ä^æ] •cÄ Ä äcä@ÄÖ[] •~ { ^\&@Ä^) ä !ÄT WÜVÄ^) äÄÄ
Ö[] Ä~^~^•cÄÄ
| I Ä V@Öä dā~ q !Ä^) ä •ÄÄÜcæ •ÄcäÄ^ÄW äæ^ÄVä •æcä } Äcä@Ä [ç^ÄÄ !Ä [ç^ÄÜ cÄæ^Ä
| I Ä@ÄÖ~&ç^ÄÖcæ^Ä-Ä@Ä [ç^Äcæ *^ÄÄ [{ Ä@Äæ^Ä^) cÄÄ@ÄÖcæ *^ÄÖ[] •~ { ^\&
| S [&æ] Ä~^~^•cÄÄ

Ä
Rules: Ü~Ä^Äcæ

Ä
Exceptions: Ü~Ä^Äcæ

Ä

Deleted: ^ä@!Ä

Deleted: p[]^

Deleted: p[]^

Deleted: Roles and Responsibilities: p[]^

Deleted: F

Deleted: T æ&@Ä

ÖÄ !ÄÄ Öcæ Ä Ä Ä Ä Ä Ä Ä Ä Ä Uæ^ÄÖJÄ Ä
X^!•ä } ÄÄÄÄ

[illegible]

Á
Á

Ö-ä ää } Ä Ä @ ÄÖ } ~ } | ä } Ü } | } ^ Ä ä ä ä ä ä
Ö } ~ } | ä } Ü } | } [^ Ä { { ~ } ä ä Ä @ ä ä [] ~ ä } Ä Ä @ Ä [] ~ { ^ Ä ä } ö
+ Ä @ Ä ä ^ ÄÖ } ~ } | ä } Ä : ä } ä ä } Ä Ä Ä ^ : ä } Ä Ä @ Ä ^ } ä [: Ä ^ - ä ä } Ä Ä
@ Ä • [ä ä ä ä ä ä ^ Ä Ä Ä Ä Ä] , • Ä

Á

[illegible]

Á

0B&~}0B&.Á^cā•Á Á@&||^)Á^á[!Á@Á@Á[]•{ }đ}Á
Vīā•āđ}Á Á@Áđāā|ā|Á[]•{ }đ}Á ÁÁÁ&āāÁ Á@Á^á[!Á
+!Á[]•{ ^|qÁ&&~}ōā ÁÁ^āā•Á Á@ÁÁ^á[!Á

A

[illegible]

.Á Y @ } Á[Ö] } • { ^ Á, ä@•Á Á Á Á Á } ää Á Á } ä[Ä
 .Á Y @ } Á[Ö] } • { ^ Á[] } Á Ä • c { Ö ä Ä

Deleted: F

Deleted: T æ&@G

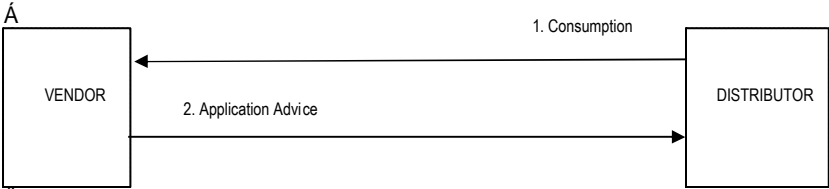
[illegible]

TRANSACTION FLOW CT1

Consumption

Á

In this scenario, the Distributor performs the meter read according to the scheduled meter read date for the account, and sends the Consumption to the Vendor.



Á

Flow:Á

FEÄ Öäöä~ç!Á^äö•Ä@Ä^c!Äö äÄ^}ä•ÄÖ[]•~{]ç!}Ä[Ä@Ä^}ä[!Ä ä@Ä[~!Ä~•ä^••Ääö•Ä

{||[, ä*Ä@Ääö~|äö}ÄÄ@ÄÖ[]•~{]ç!}Ä

GEÄ X^}ä[!Ä^c!}•Äö Ä[|äöä}ÄäöÄ^Ä^•[]}•^Ä ä@Ä[Ä~•ä^••Ääö•Ä

Á

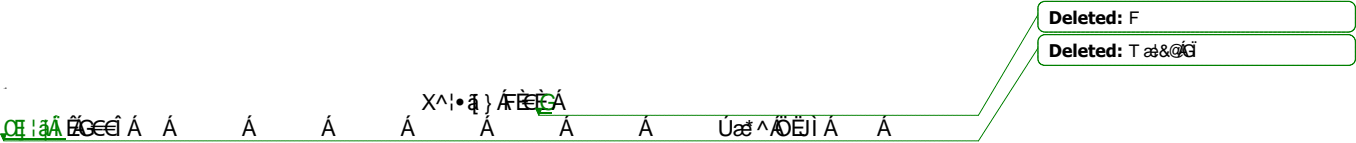
Rules: Þ[]^

Á

Exceptions: Þ[]^

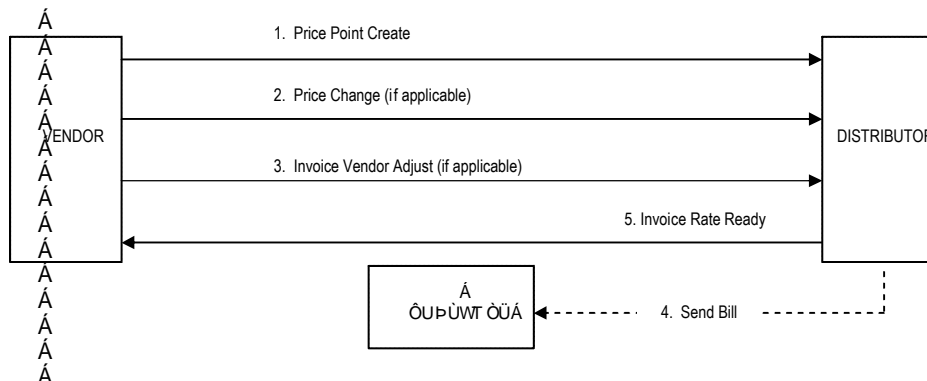
Á

Roles and Responsibilities: Þ[]^



TRANSACTION FLOW INV1
Invoice Rate Ready
and
Invoice Vendor Adjust
(Distributor Consolidated Billing in a Rate Ready form)

This scenario provides the sequence of Transactions which are necessary in order for the Distributor to calculate and send an invoice to the Consumer.



*****Application Advice Accept or Reject must be sent on all Transactions to indicate the Transaction has been processed.**

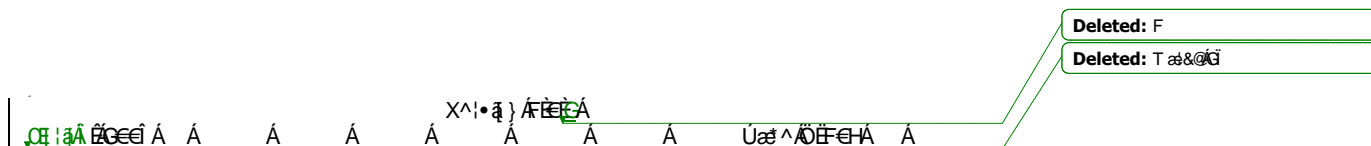
Flow:Á

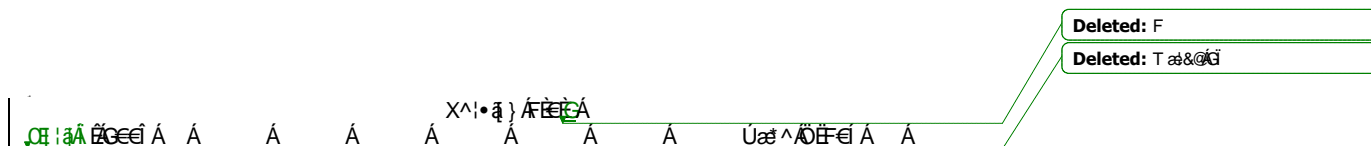
[illegible]

Rules: $\vdash \{ \}^A$

Exceptions:

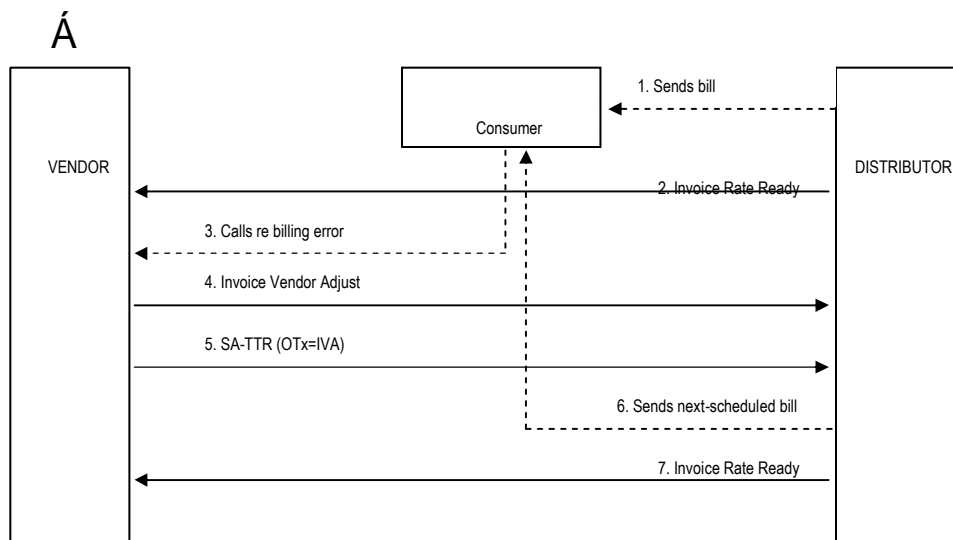
Roles and Responsibilities:





TRANSACTION FLOW INV3
Invoice Rate Ready and Invoice Vendor Adjust
Vendor Correction with Vendor Cancel
(Distributor Consolidated Billing in a Rate Ready form)

In this scenario, the Vendor has sent an Invoice Vendor AdjustTransaction to correct its portion of the bill, but realizes that the adjustment is not applicable. The Vendor sends a Status Advice Terminate Transaction Request (SA-TTR) to cancel the Vendor adjustment.



*****Application Advice Accept or Reject must be sent on allTransactions to indicate the Transaction has been processed.**

Flow:

FĪÄ Öädäñ d[ʔäʔ·Ä@ÄÖ]·~{ ʔ|ĒÄ
 GĀ Öädäñ d[ʔÄʔ·ä·ÄQç æʔÄæ·Äʔæñ·Äʔæ·æçç] Äʔ Ä@Äʔ·ä[ʔÄ
 HĒ Ö]·~{ ʔ|Äæçç·Äʔ·ä[ʔ·Äʔäʔ·Äʔ| ʔ|Äʔ·Äʔ·ä[ʔÄ æʔÄæʔ·Äʔ·Ä· } ĒÄ
 Ī Ä Xʔ·ä[ʔäʔ·æ·Ä@Äʔ] |æʔ·Äñb·d ʔ· öçç· ʔäʔ·äʔ·ä·Äʔ·Äʔ·Äʔ·ÄQç æʔÄʔ·ä[ʔÄb·öçç
 Vʔ·æçç] Äʔ·Ä@Öädäñ d[ʔÄ
 Ī Ä Xʔ·ä[ʔÄ·ä·Äʔ·Äʔ·Ä@ÄQç æʔÄʔ·ä[ʔÄb·öʔ·æçç] ĒÄ Äʔ·ä[ʔÄʔ·ä·Äʔ·Ä·Ä
 Öädæʔ·Äʔ·ä[ʔ·ä·Äʔ·æçç] Äʔ·~·~·öçç] äʔ· Ä@ÄQç æʔÄʔ·ä[ʔÄb·öʔ·æçç] ĒÄ
 Qç Äæçç·Ä@Öädäñ d[ʔäʔ·Äʔ·Ä@Öçç
 Ī Ä V@Öädäñ d[ʔäʔ·Ä@Ö]·~{ ʔ|Äʔ·Ä@Ä ||, ä· Äʔäʔ·Ä·Äʔ·äçç· öçç· öçç· Äʔ·Äʔ·Ä
 ʔ|Ä@Äʔ·ä[ʔ·Äb·d ʔ·Ä
 Ī Ä V@Öädäñ d[ʔÄʔ·ä·Äʔ·ÄQç æʔÄæ·Äʔæñ·Äʔ·æçç] Äʔ Ä@Äʔ·ä[ʔÄ·äçç· öçç· öçç·
 äʔ·äʔ·Ä@Äʔ·æçç] ÄQç Äæçç·Ä@Äʔ·ä[ʔ·Ä@Öçç æʔÄ[ʔ·~·~·öçç] öçç· Ä@Ä
 Ö]·~{ ʔ|äʔäĒÄ
 V@Äʔ·äʔ·Äʔ·Äʔ·Ä@Ö]·~{ ʔ|äʔäĒÄæʔ·Äʔ·Ä ||·äçç
 ʔ·Äʔ·Äʔ·Äʔ·Ä@Ö]·~{ ʔ|äʔäĒÄæʔ·Äʔ·Ä ||·äçç

Rules:

FEÄ V@Ää [~ } öÄÄ@Äc [æÄÄ^ ä | !Äb • ö æÄÄÄ [• äÄÄÄ | ÄÄÄ^* äÄÄÄ

Deleted: F

Deleted: T æ&@G

[illegible]

ÕÖŒÀÙÒÜXÇÒÁẼÜÒÒT ÒP VÁ

Á

ŒÚÒǾÖÓÄ

ÒÓVÀÙcæ åæå•ÄÖ[& { ^} ¢Á

[illegible][illegible][illegible][illegible][illegible]

Á

Exceptions: $\vdash \{ \}^A$

Á

Roles and Responsibilities:

X^} á[!•Áé^Á} Áé[[, ^áÁ Á:[çã^Áç[æ^ÁX^} á[!Áöb•ç ^} •Á@æÁ^|æ^Á Á@ÁÖæ Á

Deleted: æ

[illegible]

Deleted: æ å Å

Á

[illegible]

Deleted: F

Deleted: T æ&@G

0 1 2 3 4 5 6 7 8 9 10 11 12 13 14 15 16 17 18 19 20 21 22 23 24 25 26 27 28 29 30 31 32 33 34 35 36 37 38 39 40 41 42 43 44 45 46 47 48 49 50 51 52 53 54 55 56 57 58 59 60 61 62 63 64 65 66 67 68 69 70 71 72 73 74 75 76 77 78 79 80 81 82 83 84 85 86 87 88 89 90 91 92 93 94 95 96 97 98 99

[illegible]

À
ÒÓVÀUcæ åæå•ÄÖ[& { ^} á

œúúòþ öýáöá

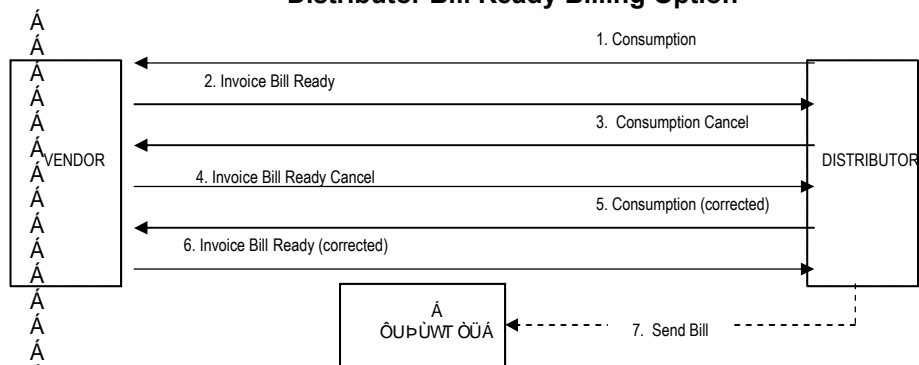
[illegible]

Deleted: F

Deleted: T æ&@G

[illegible]

TRANSACTION FLOW INV6
Distributor Bill Ready Billing Option



*****Application Advice Accept or Reject must be sent on all Transactions to indicate the Transaction has been processed.**

Flow:Á

FĪĀ Ō[]•{ [] q̄ } Á/vəj•asq̄ } Á/Á^) Ō[{ [Á@Ōā dā q̄ !Á Á@Á^) ā !Á ā@ Á Á• q̄ Á• Áas• Á
+{ [Á@Áas• Á@Ōā dā q̄ !Áas̄ } as̄• Á@Áā jax̄/Á/ }•{ [] q̄ } Ē
GĀ V@Á^) ā !Áas̄ } as̄• Á@Á/ { [[āā Áas̄• Á• Áas̄• āÁ) Á@Á/] dāā ā āā@Ō[]•{ ^!ĒÁ@Á
X^) ā !Á@Ō) Á^) ā Á@Ōā dā q̄ !Á@Áq̄ āŌÁÁ/Áas̄• Á/vəj•asq̄ } Á āā@Á ā/Á• Á
Áas̄• Á q̄ ÁÁ• Ō[]•{ [] q̄ }•{ ^!q̄ Áā !Áas̄• Á@Á GĀ• q̄ Á• Áas̄• Áas̄• Á@Ō[]•{ [] q̄ } Á
V/vəj•asq̄ } Áas̄• Á/Á^) Á/Á• āā
HĀ Ō[] āāā } āŌā dā q̄ !Á^) ā Á[]•{ [] q̄ } Ōā ā Á/vəj•asq̄ } Á/Á^) ā !Ē
Ī Ā Ō[] āāā } āŌÁ^) ā !Á^) ā Áq̄ āŌÁÁ/Áas̄• Áā ā/Á Ōā dā q̄ !Á Áas̄ ā/Á@Á ā āāŌŪĒ
Ī Ō[] āāā } āÁ/ } ÁŪĀ^) ÁĀ &• ÁŌā dā q̄ !Á^) ā Á/ Ĩ•&• āŌ[]•{ [] q̄ } Á/vəj•asq̄ } Á Á
X^) ā !Ē
Ī Ē Ō[] āāā } āÁ/ } ÁŪĀ^) ÁĀ &• ÁŌÁ^) ā !Á^) ā Á/ Ĩ•&• āŌq̄ āŌÁÁ/Áas̄• Á/vəj•asq̄ } Á
q̄ Ōā dā q̄ !Ē
Ī Ē V@Ōā dā q̄ !Á@Ō) Á^) ā Á@Ō[]•{ ^!Áas̄ }•[āas̄• āÁā āā āā[ŌÁ^) ā !Á āā Ōā dā q̄ !Á
&as̄• Á• Á] ÁĀ• āā Á@ŌŌVÁ••Ō[] Ē

Rules: $\Delta \vdash \{ \} \wedge \Delta$

Á

Exceptions: $\mathbb{A}^1_k[\]^{\wedge \mathbb{A}^1}$

Á

Roles and Responsibilities:

Deleted: F

Deleted: T æ&@Ä

$\text{CH}_3\text{-AA-CC-}\overset{\text{X}^+ \cdot \bar{\text{A}}}{\underset{\text{A}^- \oplus \text{A}}{\text{A}}}-\text{A-A-A-U}\overset{\text{A}^- \oplus \text{A}}{\text{A}}-\text{A-A}$

Õ Ö Ø Ù À Û X Ç Å Æ Ü Ò Ó Ò Þ V Á

À
ÒÓVÀUcæ åæå•ÄÖ[& { ^} cÄ

œúúòþ öýáöá

V|æ } æç| } Å Å`à`~`^ } q` Åæ &||^ãÄV|@`Áç& } ç| } Å Åç Å ÅÅ@`Á^ } å| Å
|^&~`^ } Å Åç| Å Å^ } å| Å Å| Å Å Å` Å Å &||Å| Å } æç| } Å Å@`Á | å å Åç| Å Å
X^ } å| Å Å| Å Å Å` Å| æ } æç| } Å
Å

[illegible]

Á
 Ð^*ææ^&œ*^•Á¿^ãœÐæ^Áæ[,^ãÁ}æÁ¿ç[æ^Á^]ã!ÁœÁŮ^æ^Á
 Viæ•æœ}Æ

Deleted: F

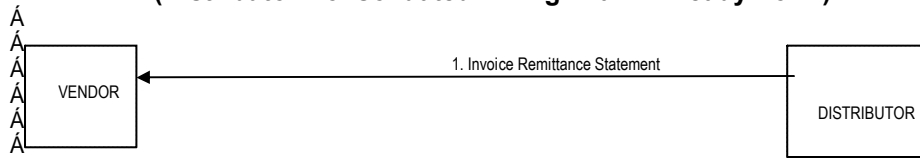
Deleted: T æ&@G

$\text{Oe}^{\wedge}\cdot\text{A} \rightarrow \text{Oe}^{\wedge}\cdot\text{A}$

5.3.4 Split Billing

[illegible][illegible]

TRANSACTION FLOW INV11
Invoice Remittance Statement
(Distributor Consolidated Billing in a Bill Ready Form)



*****Application Advice Accept or Reject must be sent on all above Transactions to indicate the Transaction has been processed.**

Flow: Á

FĲ Ä Öä cā d ĩ | Á ^} å • Å ç [æ ^ Ů ^ { āæ } & ^ Û æ ^ { ^ } o Ĭ | Á @ Á [] o Ə

Rules: $\Delta \vdash \{ \}^{\Delta} \Delta$

Roles and Responsibilities:

Á
Á
Á
Á

Deleted: F

Deleted: T æ&@G

$\text{CH}^+ \cdot \text{A}^- \rightarrow \text{C}^+ + \text{A}$

5.5 Status Advice

[illegible][illegible]

Notice of Pending Switch

[illegible]

Terminate Transaction Request

V@Ùce•AqazAqA^A^}A^A@a@A@AqadqA|A@A^}a|AqA|{qaeA
a|AqA^•|A^~^•cAaAqazAqA||,^aBQ|Aqaz|AqazA^A^•aA
•AqAq|cAqAqA@A|}•{^AqAq+|{^aA@A^}a^A^AqAÙce•AqazA
qAqA@A|}•{^AqAqoAqAqAqAqA,azA^~^•cAaA{aAqAqA^}a|A
qA|A

[illegible]

Deleted: 4 { Å ^ Å } ^ Å æ \ ^ Ó
Ú æ Å æ ^ Ó Å ^ Å @ ! Å æ \ ^ Ó
Ú æ Å æ ð

Deleted: æ) Á

Deleted: •[^]Á

[illegible]

Deleted: $\bar{U}[\{ \wedge \bar{A} \} \mid \bar{A}]$

[illegible][illegible][illegible]

Formatted: Font: Italic, Underline

Deleted: c@Á[c^Á^* q • Á

Deleted: æ ^ Å æc

Deleted: , @^ç^!Á^} å•

Deleted: F

Deleted: T æ&@G

Á
0E] ^} ã 0E
Á

Service Transaction Lead Times

Á

00VAVa aasA A[&{ ^} A
 C[] ^) aA A
 U0UX00AUAU0U0V0U000AUAU
 A
 A

Enrol Transaction

[illegible][illegible]

NOTE: Distributors able to process an Enrol Request Transaction with less lead time prior to September 6, 2005 should continue their current practice. Other Distributors should attempt to improve their processes and systems to decrease the lead time.

HĖV@À;|{ĬŮ^~^•Á/æ•æĭ}Ā æĀ[ŏŏ^Ā^à{ æĀăĀæ|ăĀ@æĀFGĖĀ
 &æĭ}ăæĀæĀ•Ā!ă!ĀĀ@Ā~&ŏŏ^ŮæĀĚ

A
| ÄV@Ö;|[|Ä^~^•Á/æ•æq}Ä^•öÁÁ•|[|äâÄÄÄ@Öäã q|Ä äÖ
æ Ö;|[|Ä^•|[|•^Ä/æ•æq}Ä;|[|Ä&x}dÄ/Ä Ö;|[|Ä^b&y äÖ@Ä
æ]|ÄæÄ^Äæ[|Ä/äâGÄ äÖ/FI Sæ} äæÄæ:Ä

[illegible]

À
 Î Æ V @ / ^ Á & æ Á ^ Á } | ^ Á } ^ Á Ò | | [Ä Ü ~ ~ ^ • Á / æ • æ æ } Á ^ } ä ä * Á æ Á ^ Á [ä ö Á
 æ ^ Á @ / ^ / | ^ Á & æ Á Ò | | [Ä Ü ~ ~ ^ • Á / æ • æ æ } / Á ^ Á } ä ä * Á æ Á ^ Á à ~ ~ ^ } á
 Ò | | [Ä Ü ~ ~ ^ • Á / æ • æ æ } Á ä / Á ^ Á & ^ á Á æ ö ö @ Á æ | æ æ / Á ^ æ } Á
 & ä ä G D Ä

Ä
ï ÈV@ÀÖ||[Ä^~^•Á\æ•æç} Á æ Á [ó^Áæ &||^á ä @ Áí &æ^} ææÁæ•Á
[Á@À~&çÄÖæÈ\Á &@^•^Áæ [~} ó Ä Á^ææ!^^áÄ Á@
Öäcä d!Ä

Deleted: , ã@ Å} ! | Âæ & | Á
Ü^ ~ ^ • Á

NOTE: Distributors able to process a Status Advice Terminate Transaction Request referencing the Enrol Request Transaction with less lead time prior to September 6, 2005 should continue their current practice.

Deleted: n

Deleted: *Cancel*

[illegible]

Deleted: F

Deleted: Ræð ~ æð ÁG€

$\chi^2 \cdot \frac{1}{n} \left\{ \frac{1}{n} \sum_{i=1}^n \frac{1}{\sigma_i^2} \right\} \frac{1}{n} \sum_{i=1}^n \frac{1}{\sigma_i^2}$

Õ Ö Œ Æ À Õ Ü X Ç Ì Á Ê Ë Û Ò Ò T Ò Þ V Á

œúùòþöóáöá

Ò Þ V Á Á
 Ó Ó V Á U c a a a • Á Ö J & { ^ } á
 Q [] ^ ä ä Å Å
 Ü ö Ü X W Ö Ä U Ö P U C Ö V W P S Ö Ö Ä Å Ç Ö Ü Ä
 Á

Drop Cancel Transaction) up to 5 calendar days before the Effective Date requested in the Drop Request Transaction. This timing provides the Vendor, once it receives a Drop Request Transaction from the Distributor, a period of up to 10 calendar days to contact the Consumer to confirm any contractual obligations, if applicable.

Deleted: The following current practice of Enbridge (i.e., as at September 6, 2005) is noted: Enbridge is able to terminate, or cancel a Drop Transaction Request with as little as 3 calendar days lead time (i.e., the same lead time within which it is able to accept and process the Drop Transaction Request itself). ¶

Deleted: F

Deleted: Ræð ~ æð ÁGE

α β γ δ ϵ ζ η θ ι κ λ μ ν ξ \omicron π ρ σ τ υ ϕ χ ψ ω α β γ δ ϵ ζ η θ ι κ λ μ ν ξ \omicron π ρ σ τ υ ϕ χ ψ ω

ŒÚÒǾÖŸÁÖÁ

04] ^ } a ã c Á O E Á

Á
Á

Á

Deleted: ~~Ää~~ ~~Ää~~] | ~~Ää~~ | ^

Formatted: Bullets and Numbering

Deleted: Ú

Deleted: Ræð ~ æ^ ÁGE

$\text{CH}_3\text{-I} \xrightarrow{\text{AlCl}_3} \text{CH}_3^+\text{I}^- \text{AlCl}_4^-$

Á
0[] ^} åã/ÓÁ

Á
Ô@ * ^Á åÁ^!•ā } ÁÔ[} d[|Á'¡[&^••Á
Á

ÕÖŒÛÀÙÒÜXÇÔÀÁŒÛÖÒÒT ÒP VÁ

Á

œúòþ öóäöá

ÒÓVÁÛæ åæå•ÄÖ[& { ^} á

ŌĤ] ^ } ă ă Ą Á Ó Á

ÔPŒÕÒÁŒÖÅÒÜÙÞÀÛÞVÛŠÁÛÛÔÒÙÀ

Á
Á

Introduction

[illegible]

Structure and Process

[illegible] \dot{A}

V@Áã aÁc cQ|ã Á Á^cã } • Á Á@Àcã aãã • Áã aÁã|ã Á|Á@ãÁ

ǎ] | ^ { ^ } cæā } Á Á@ ÁÓ[æǎĚ

Á

[illegible]

Á

OZee A\^&d[] zA\^~.a^..A\^a\^~.aa\^[] A\^aa\^aa\^A\^[]\^a\^~.A\^[]\^ A\^~.O\^D\^ a\^A\^
 +[]\^A\^A\^A\^aa\^aa\^*A\^~a\^&[]\^{\^A\^A\^A\^@A\^O\^E\^A\^@A\^~.[]\^~aa\^A\^A\^@A\^O\^A\^a\^A\^
 a\^A\^A\^&[]\^~aa\^A\^A\^~A\^O\^aa\^*^A\^A\^~^..O\^aa\^A\^A\^aa\^a\^E\^aa\^a\^A\^~a\^{\^A\^A\^A\^@A\^O\^A\^
 \^&[]\^{\^}a\^a\^A\^A\^aa\^aa\^~.A\^A\^A\^A\^aa\^aa\^E\^A\^@A\^~^{\^}a\^~.@A\^a\^A\^&[]\^~aa\^A\^A\^E\^
 ~.A\^A\^&~a\^A\^A\^A\^aa\^aa\^aa\^aa\^aa\^aa\^aa\^aa\^aa\^[]\^A\^O\^O\^A\^aa\^E\^A\^@A\^O\^A\^a\^A\^[]\^A\^A\^
 aa\^&[]\^~aa\^A\^A\^aa\^aa\^A\^A\^~\^O\^A\^A\^A\^@A\^&[]\^~.~.~.A\^A\^~\^A\^A\^A\^&[]\^{\^}aa\^aa\^A\^
 a\^A\^aa\^A\^A\^A\^@A\^O\^E\^A\^A\^@A\^~.~.~.A\^A\^&[]\^~.~.~.E\^A\^A\^~.~.~.aa\^*A\^aa\^A\^A\^aa\^A\^
 a\^A\^A\^A\^A\^A\^[]\^[]\^[]\^aa\^A\^A\^A\^~.~.~.A\^A\^@a\^D\^A\^, G\^D\^A\^A\^@A\^O\^E\^A\^

 \tilde{A}

Á

Change Request

Oḡ Á æc Á æ Å ææc Å [] [^āĀčā] Ą Ą @ Ū cā āæā : ÉÁ @ Ō cā Ą @ Á
Y Ō Ą Ą . ~ ! ^āŌcā [cā . Ą Ą] [^āĀčā] . Å ^ Ą || cā Ą Ą @ cā Ą

Deleted: F

Deleted: Ræð ~ æ^ ÁG€

 $X^{\wedge}! \bullet \tilde{q}\}$ ÁÊÈÉÁ

OE: a, e, i, o, u Á Á Á Á Á Á Á Úæ ^ Ä Ö Ø Æ

00T 0PVA Á
00VÁca áá• ÁJ & { ^} á
QJ] ^] ááOA
OP P OÖA ÖA KOUUW P OU P VUU SÁ UÜO ÜÜÁ
Á
Á

<p align="center">Ontario EBT Change Request</p> <p align="center">This Ontario EBT Change Request can be found on the OEB web site at: XXXXXXXXXXXXXXXXXXXXXXXXXXXX</p>
--

Requester's Name:	Distributor/Retailer Name:	Phone # :
Date of Request:	Affected XML Transaction Set(s):	E-Mail Address:
Requested Priority (emergency/high/low):	Requested Implementation Date:	Status:

Brief Explanation (This will be copied into the description in the Change Control Summary Spreadsheet):

Detail Explanation (Exactly what change is required? To which Ontario EBT Standards? Why?):

For Change Control Manager Use Only:		
Date of Ontario EBT Discussion:	Expected Implementation Date:	

Ontario EBT Discussion and Resolution:

<u>Priority Classifications</u>	
<u>Emergency Priority</u>	<i>Implemented within 10 days or otherwise directed by Ontario EBT</i>
<u>High Priority</u>	<i>Changes / Enhancements implemented with 30 days. The next release, or as otherwise directed by Ontario EBT</i>
<u>Low Priority</u>	<i>Changes / Enhancements implemented no earlier than 90 days. Future Release, or as otherwise directed by Ontario EBT</i>

Please submit this form via e-mail to both the OEB at XXXXXXXXXXXX and to the Change Control Manager, XXXXXXXXXXXX at XXXXXXXXXXXX. Your request will be evaluated and prioritized at an upcoming Ontario EBT meeting or conference call.

1/10/2001

Deleted: F

Deleted: Pæ ~ æ ~ ÅE

Œ] ^ } å ã Á Ô Á

Á

V | æ • æ & ċ } Ä ^ • ä } æ ċ } Á Á æ å æ ċ | ^ Á | Á

U] ċ } æ Á

Á

Á
Á

Deleted: Ræð ~ æð ÁGE

α β γ δ ϵ ζ η θ ι κ λ μ ν ξ \omicron π ρ σ τ υ ϕ χ ψ ω α β γ δ ϵ ζ η θ ι κ λ μ ν ξ \omicron π ρ σ τ υ ϕ χ ψ ω

Õ Ö Œ Û Ä Ü X Ç Á Ê Ù Ò Ó Ô Õ Ö Ø Ò Þ V Á

Á

œúùòþöóáöá

ÒÓVÁUcæ åæå•ÄÖ[& { ^} á

04] ^ } a ã A Ô Á

VÜÖÛÙŒVQPAÖÒÙŒPŒ/QPÁÁŒPÖŒUÜYÁJÜÁÚVQPŒŠ

 \dot{A}

Á

Initiating Transaction	Mandatory/Optional Designation	Implementation Date
U ^{aa} Aq i { D ^A Ø } á• Aq àaæ & Á Uæ { ^ } áQā dā q i Á Ô [] • [āāā ā āQāā * Á ā āUæ Á U ^{aa} Aq i { D ^A	T æ áaæ i ^ Á	Ræ ~ æ ^ Á FÖÖÖ Á
Qç [ā A U { āāæ & Á Uæ { ^ } áQā dā q i Á Ô [] • [āāā ā āQāā * Á ā āQā U ^{aa} Aq i { D ^A	T æ áaæ i ^ Á	Ræ ~ æ ^ Á FÖÖÖ Á
Application Advice (AA)		
OE [] āāā } āāā Á	T æ áaæ i ^ Á	Ræ ~ æ ^ Á FÖÖÖ Á
Status Advice (SA)		
Uæ • āāā Á	T æ áaæ i ^ Á	Ræ ~ æ ^ Á FÖÖÖ Á
Functional Acknowledgement (FA)		
Ø } &ç } æ Á OE [] , ^ á * { ^ } á	T æ áaæ i ^ Á	Ræ ~ æ ^ Á FÖÖÖ Á

 \overline{A}
$$X^{\wedge} \{ \bullet \} \{ \bar{a} \} \{ \bar{A} \} \{ \bar{B} \} \{ \bar{C} \} \{ \bar{A} \}$$

0E 1A 2C 3A 4A 5A 6A 7A 8A 9A Úæ ^A Ö Æ Ö É Á

Deleted: F

Deleted: Ræð ~ æ^ ÁG€

GA	Ö@*^Ä Ô[]~{^!Ä Š[&œ]Ä	p[ä~Öä d~q!Ä [-Ä[]~{^!qÄ &@*^Ä-Ä[&œ]Ä	Ö~!!^)ä X^)ä[!Ä	Öä d~q!Ä	p[Ä!ä ä qÄ!ä)•&œ]Ä p~{ä^!Ä
HGA	p[ä~Ä-Ä Ú^)äq*Ä, ä&œ	p[ä~Ä~!!^)ä X^)ä[!Ä-Ä[]c•ä	Öä d~q!Ä	Ö~!!^)ä X^)ä[!Ä	p[Ä!ä ä qÄ!ä)•&œ]Ä p~{ä^!Ä q@ÄÄÄ!ä ä q*Ä }[&œ]Ä!ä)•&œ]Ä!Ä c@Ä[]c•ä![]&••Ä