

GAS FRANCHISE HANDBOOK

developed by

**A JOINT COMMITTEE
OF GAS COMPANY**

and

**MUNICIPAL SECTOR
REPRESENTATIVES**



TABLE OF CONTENTS

Foreword	1
Definition of Highway	3
Right to Use Highways	3
Compensation for Damages	3
Planning for Construction	4
Plans and Drawings	5
Sample Plan - Figure 1	6
Work on the Highway	7
Location and Depth of Plant	9
Easements	9
Typical Road Cross Section - Figure 2.	10
Joint Trench Profile - Figure 3.	11
Ditches and Drains	12
Bridges, Viaducts or Other Structures	12
Emergency Situations	13
Post-Construction Clean Up.	13
Plants, Trees, Vegetation, Grass or Sod	13
Pipeline Relocation	14
Encasement of the Gas System	14
Maintenance of the Gas System.	15
Work in the Vicinity of the Gas System	15
Pipeline Supports.	16
Typical Pipeline Support Crossing Trench - Figure 4.	16
Typical Pipeline Support Parallel to Trench - Figure 5	17
Location of the Gas System for Others	18

The following are subjects which are more complex and not easily summarized in a Handbook. Reference should be made to Sections 11, 13 and 16 of the 2000 Model Franchise Agreement.

- *Alternative Easements*
- *Municipal By-laws of General Application*
- *Use of Decommissioned Gas System*

Full copies of the 2000 Model Agreement may be obtained at www.oeb.gov.on.ca or contact your local Gas Company.

FOREWORD

NATURAL GAS FRANCHISE HANDBOOK

Provincial legislation requires that there be a Franchise Agreement between the Municipal Corporation and the Gas Company serving that Municipality. In April 2001, the Ontario Energy Board issued the revised 2000 Model Franchise Agreement to serve as a model for such agreement.

A joint committee comprised of Gas Company and Municipal Sector Representatives has developed this revised Franchise Handbook as a supplement to the 2000 Model Franchise Agreement. This Franchise Handbook is meant to serve as a consolidated guide to deal with operating issues that sometimes require a greater level of detail than appears in the Franchise Agreement itself.

Although your current Franchise Agreement may not be the 2000 Model Franchise Agreement, the contents of this Franchise Handbook describe how the Gas Company intends to carry out its activities within the Municipality and is intended to represent good operating practice. Where there is any conflict between your Franchise Agreement and this Handbook, it is the Franchise Agreement that takes precedence. The Gas Company has staff available to expand on the matters covered in this Franchise Handbook and answer any questions that might arise.

The Board acknowledges the efforts of the participants in producing the revised Franchise Handbook.



Floyd Laughren
Chair – Ontario Energy Board
May 2002

THE FRANCHISE HANDBOOK WORK TEAM



Wilfred Teper (left)
*Ontario Energy
Board*

Bob Foulds (right)
*Municipal Sector
Representative*



David Shantz
*Municipal Sector
Representative*



David Sword (left)
Union Gas Representative

Nick Thalassinos (right)
*Enbridge Consumers Gas
Representative*

Pat Vanini
(no photo available)
*Municipal Sector
Representative*

Neil McKay (left)
Ontario Energy Board

Hugh Thomas (right)
Union Gas Representative



DEFINITION OF HIGHWAY

For purposes of the Franchise Agreement 'highway' means all common and public highways and shall include any bridge, viaduct or structure forming part of a highway, and any public square, road allowance or walkway and shall include not only the travelled portion of such highway, but also ditches, driveways, sidewalks, and sodded areas forming part of the road allowance.

RIGHT TO USE HIGHWAYS

Subject to the terms and conditions of the Franchise Agreement the consent of the Municipality is granted to the Gas Company to enter upon all highways now or at any time hereafter under the jurisdiction of the Municipal Corporation and to lay, construct, maintain, replace, remove, operate and repair a gas system for the distribution, storage and transmission of gas in and through the Municipality.

The Gas Company attempts to minimize inconvenience and disruption caused by pipeline construction and maintenance activities through pre-construction planning, on the job supervision, discussions with municipal representatives and/or property owners or occupants, and timely restoration of property.

COMPENSATION FOR DAMAGES

The Gas Company will be responsible for, and will repair promptly or pay compensation for, any damage it causes during surveying or construction or that may result from inspection, maintenance work or emergency repairs.

This includes damage to crops, fences, tile drains, culverts, trees and access routes. Well qualified, independent appraisers and consultants are often used to assess fair compensation for damages. Any crop loss or damage will be measured, appraised and compensated for as soon as possible after cleanup has been satisfactorily completed.

PLANNING FOR CONSTRUCTION

To facilitate proper system expansion and maintenance, the Gas Company will actively participate in each Municipality's Public Utilities Coordinating Committee (PUCC). One of the mandates of the PUCC will be to develop an approved highway cross-section that outlines a standard pipeline location within the highway for each utility's plant.

The Gas Company will adhere to the standard line location wherever feasible, and will acquire approval from the Engineer/Road Superintendent prior to deviating from the standard location. In addition the PUCC will act as a forum to minimize construction conflicts between the road authority and various utilities including cable companies and municipal water and sewer works.



Engineers check plans to minimize construction conflicts.



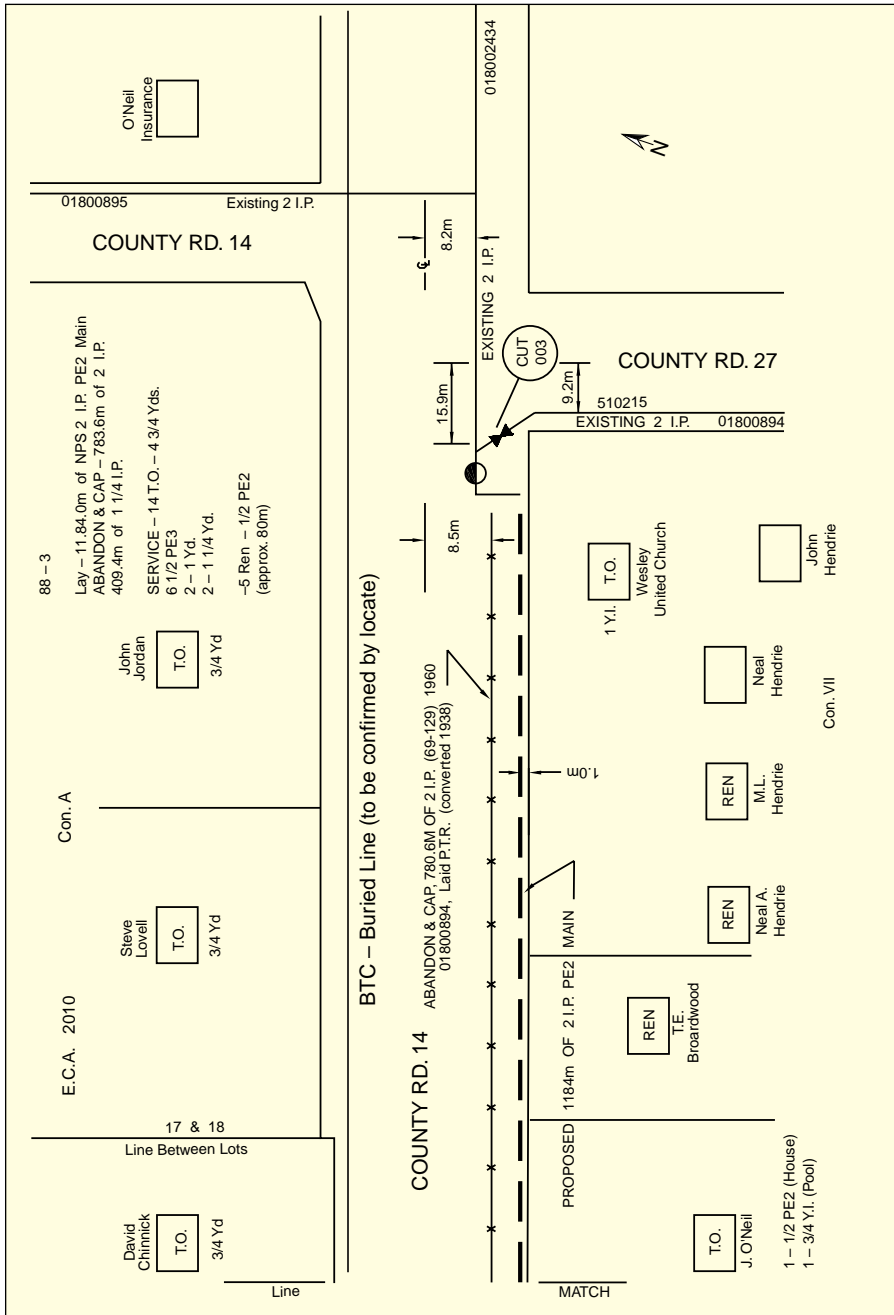
Working on the proposed projects plans to be submitted to the Engineers or Road Superintendent of the Municipality.

PLANS AND DRAWINGS

Before installing any gas main on a highway, the Gas Company will submit a plan/drawing of the proposed work (similar to the Sample Plan, Figure 1 on page 6) to the Engineer/Road Superintendent for approval. Such approval will not be unreasonably withheld from the Gas Company. This drawing will show the proposed location and alignment of the works to be installed. Route selection involves judgement as well as technical expertise. The Gas Company is very willing to meet with the Engineer/Road Superintendent to arrive at a line location that is acceptable to both parties.

Where circumstances are complex, and in order to facilitate known or reasonably anticipated projects, or when requested because the Municipality has geodetic information for its own services and all others at the same location, the plan filed by the Gas Company shall include geodetic information.

Sample Plan
Figure 1

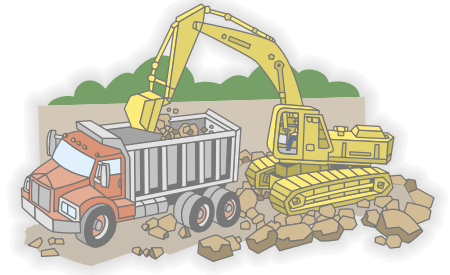


WORK ON THE HIGHWAY

The Gas Company shall not undertake any work that will disturb or interfere with the surface of the travelled portion of the highway unless a permit has been first obtained from the Engineer/Road Superintendent and all work done shall be to his/her satisfaction.

In all other circumstances, except Emergency Situations referred to on page 13, the Gas Company, before entering on any highway within the Municipality shall adhere to the requirements of the Municipality in terms of:

- (1) 'giving notice',
- (2) providing an explanation satisfactory to the Engineer/Road Superintendent, and
- (3) where required, obtaining the appropriate approval(s).



Pavement Cuts

All crossings of the travelled portion of the road will be constructed by boring, jacking or similar methods. In circumstances where these methods are not feasible, approval to open cut will be requested from the Engineer/Road Superintendent prior to construction. Such approval will not be withheld unreasonably. All pavement cuts will be repaired at the expense of the Gas Company.

The Municipality may specify a reasonable degree of compaction and the types of backfill necessary to properly restore the excavation and sub-base of the road. Also, the Engineer/Road Superintendent may specify the type, thickness and method of pavement cut restoration, both temporary and permanent. The Gas Company shall make good any settling or subsidence thereafter caused by such excavation. Where there is an agreement to do so, the Municipality may carry out the repairs and invoice the Gas Company.

WORK ON THE HIGHWAY (continued)

Driveways & Sidewalks

Every effort will be made to bore under paved driveways and sidewalks in an attempt to minimize any inconvenience to the local residents. Any damage that occurs as a result of installation of the gas system will be promptly repaired by the Gas Company to a condition as good or better than it was prior to the construction work and the responsibility for such repairs will be borne by the Gas Company.

Minimizing Inconvenience

The Gas Company will make every effort to minimize any inconvenience during construction. Residents of the local area will be notified prior to construction, and driveways will be obstructed as little as possible. The Municipality may provide guidance and procedures with regard to temporary traffic lane closing, barricading of excavations, detours and partial road closures. Every construction crew is staffed with people who are capable of answering inquiries brought forward by local residents.



*Workers
move quickly
to minimize
any
inconvenience
during
construction.*

LOCATION AND DEPTH OF PLANT

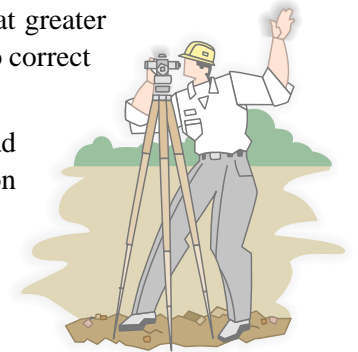
The location of the gas system must be approved by the Engineer/Road Superintendent and his approval shall not be unreasonably withheld. The Gas Company has standard locations for gas lines in specific types of rural or urban environments.

While the locations of utilities will vary in certain municipalities, the diagrams, (Figure 2 on page 10 and Figure 3 on page 11) are typical cross sections for utility locations in a 26-metre road allowance.

The depth of plant must be in accordance with the latest CSA standard and applicable Ontario Regulations at the time of construction. Depth as defined in the latest CSA standards and applicable Ontario Regulations should not be solely relied upon to locate the gas system as the depth of cover may have changed since installation. (see Figure 2, page 10 and Figure 3, page 11).

The Engineer/Road Superintendent may require sections of the gas system to be laid at greater depth to facilitate known projects or to correct known highway deficiencies.

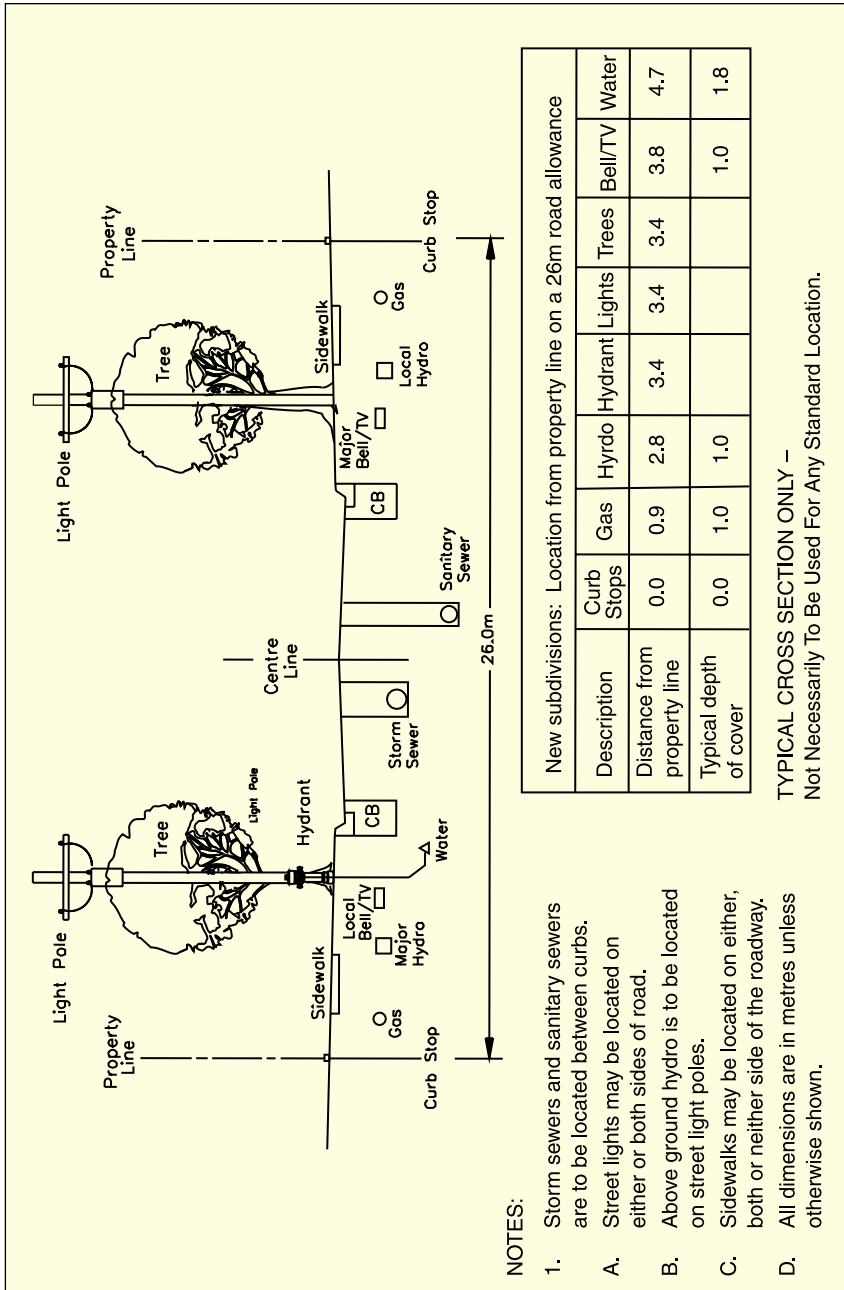
The approval of the Engineer/Road Superintendent is not a representation or warranty as to the state of repair of the highway or the suitability of the highway for the gas system.



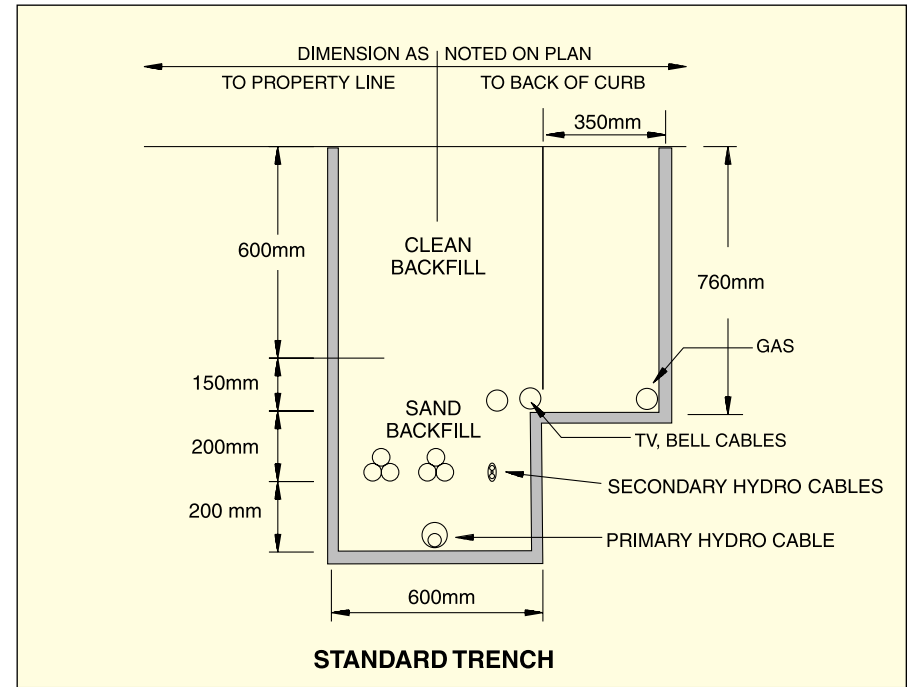
EASEMENTS

Occasionally the Gas Company will install pipelines that need to cross private property. In these cases, easements will be obtained from the landowner prior to construction.

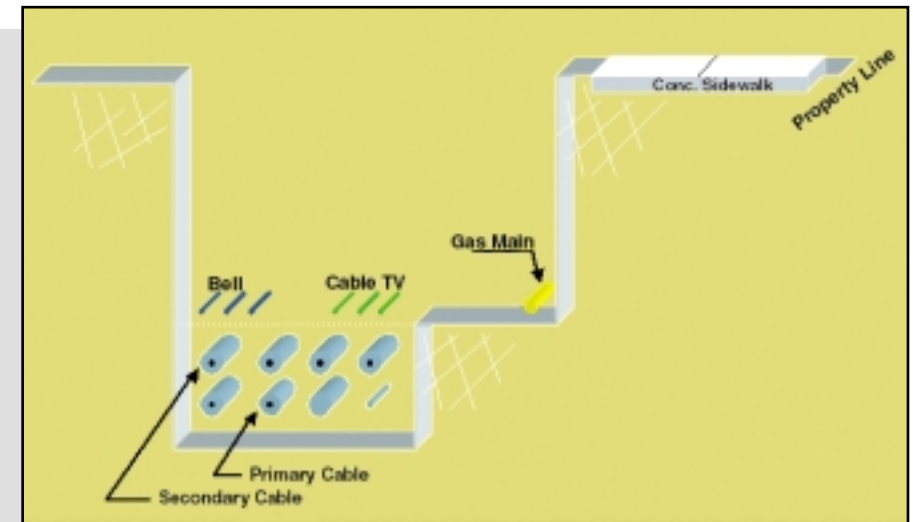
Typical Road Cross Section
Figure 2



Typical Joint Trench Profile
Figure 3



Standard Joint Trench Sketch



DITCHES AND DRAINS

Before installing any plant in the area of a drain or ditch, a copy of the plan for the installation as filed with the Engineer/Road Superintendent will be filed with the Drainage Superintendent. Wherever possible, gas lines will be installed completely under or completely over the ditch so as to not interfere with the carrying capacity of the ditch. Subsurface drains and surface drains will be restored to their original condition after construction. Ditch banks and stream banks will be restored to promote quick vegetation and minimize the possibility of erosion.



*Attaching
gas line on
a bridge.*

BRIDGES, VIADUCTS OR OTHER STRUCTURES

If the Engineer/Road Superintendent approves of a proposal (he/she may disapprove) to affix any part of the gas system to a bridge, viaduct or other structure, he/she may require special conditions or a separate agreement as a condition of approval.

EMERGENCY SITUATIONS

In the event of an emergency involving the gas system, the Gas Company will notify the local authorities, as deemed appropriate, (e.g. Engineer/Road Superintendent, police, fire, ambulance or emergency measures organizations having jurisdiction) immediately upon becoming aware of the severity of the situation. The Gas Company will make every reasonable effort to control the situation as quickly as possible and will consider claims for extraordinary expenses incurred by the Municipality during the emergency. The Gas Company will provide the Engineer/Road Superintendent with at least one 24-hour emergency contact for the Gas Company and shall ensure the contacts are current.

POST-CONSTRUCTION CLEANUP

The cleanup and restoration operations will be performed under the supervision of the Gas Company staff. These staff will be available to discuss with local residents and Municipal representatives any problem that may arise during construction. Gas Company staff have full authority to require that the construction crews and/or all the contractors carry out their work in accordance with the agreements reached with each landowner and in accordance with all relative directives and guidelines of the Ontario Energy Board or the Engineer/Road Superintendent.

PLANTS, TREES, VEGETATION, GRASS OR SOD

Damage caused by the Gas Company to plants, trees, vegetation, grass or sod will be minimized during the construction period with the Gas Company bearing full responsibility for any damages. The Gas Company will not cut, trim or interfere with any trees on the road allowance without the approval of the Engineer/Road Superintendent. Restoration will be completed as promptly as possible, allowing for supply and weather constraints.

PIPELINE RELOCATION

The location of the gas system may conflict with the Municipality's plans to reconstruct or alter roads or Municipal utilities. In these instances, the Gas Company will work with the Municipality to relocate its gas system, with the cost of the relocation to be shared as outlined in the Franchise Agreement. In most circumstances the cost of relocating the gas system will be shared 65% Gas Company and 35% Municipality. In the event your Municipality has a pre-1987 agreement or special legislation, the cost sharing may vary. The Engineer/Road Superintendent must approve the proposed new location of the gas system. The Gas Company will then relocate its gas system within a reasonable period of time.

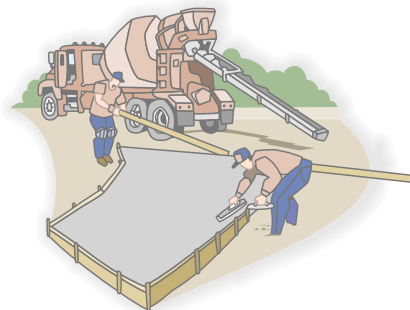
If any part of the gas system is located on a bridge, viaduct or other structure, the Gas Company will alter or relocate that part of the gas system at its sole expense.

In the event the gas system is located in an unassumed road or in an unopened road allowance and the Municipality has not approved its location, the Gas Company will pay 100% of the relocation costs.

ENCASEMENT OF THE GAS SYSTEM

The Municipality will not knowingly build or permit anyone to build without the Gas Company's permission any structure over or encasing any part of the gas system within the highway. Structures would include, but not be limited to, buildings, culverts, vaults, catch basins, utility poles and anchors, and retaining walls.

The construction of roadways, sidewalks and driveways over the gas system would not constitute encasement.

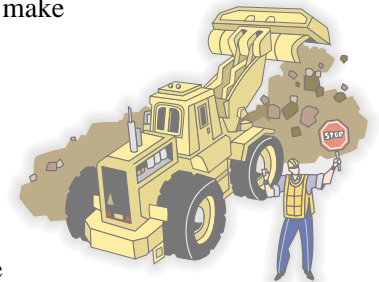


MAINTENANCE OF THE GAS SYSTEM

The Gas Company accepts full responsibility for the construction and installation, maintenance and repair of the gas system. All work done on the gas system must meet all requirements as described by the appropriate government codes. The Ontario Energy Board, the TSSA and the Canadian Standards Association require that all standards and regulations relating to both the protection of the environment and public safety are carried out. If requested, Gas Company representatives will provide copies of the relevant codes/documents. The system is maintained by trained personnel who are available at all times to keep the gas system in good operating condition.

WORK IN THE VICINITY OF THE GAS SYSTEM

Prior to working in the vicinity of gas systems, Municipalities and their agents should make themselves familiar with any required procedures and restrictions. This is necessary to ensure the safety of the general public, the safety of workers carrying out excavation, prevention of damage to gas lines and property, and to ensure the work activities take place in a compatible fashion.



Areas to become familiar with include, but are not limited to:

- *Guidelines for excavations in the vicinity of gas systems*
- *Requirements when blasting in the vicinity of gas systems*
- *Requirements when pile driving in the vicinity of gas systems*
- *Requirements when exposing gas systems*

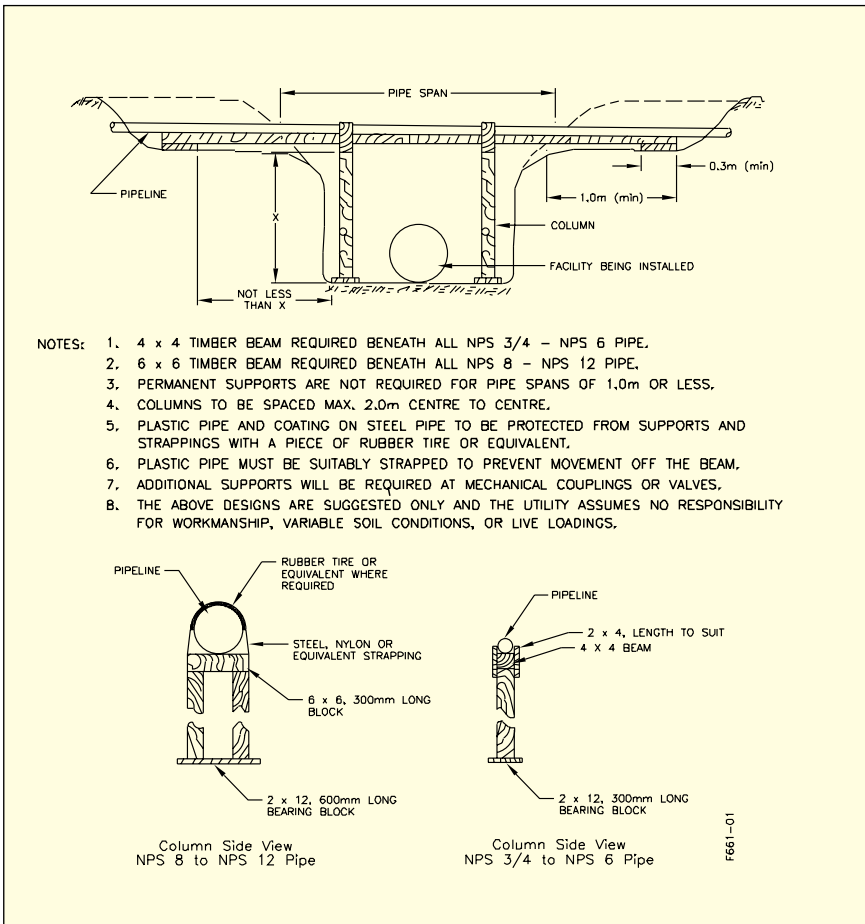
For more information on these areas, please contact your local Gas Company.

PIPELINE SUPPORTS

Prior to excavating below gas pipelines, a suitable support must be installed to prevent the pipeline from deflecting. Figures 4 and 5 (shown on pages 16 and 17) show a variety of support designs. These designs are suggestions only as conditions vary at each job site. In the event Municipal work involves support of the gas system, the proposed work shall be reviewed and approved by the Gas Company and approval will not be unreasonably withheld.

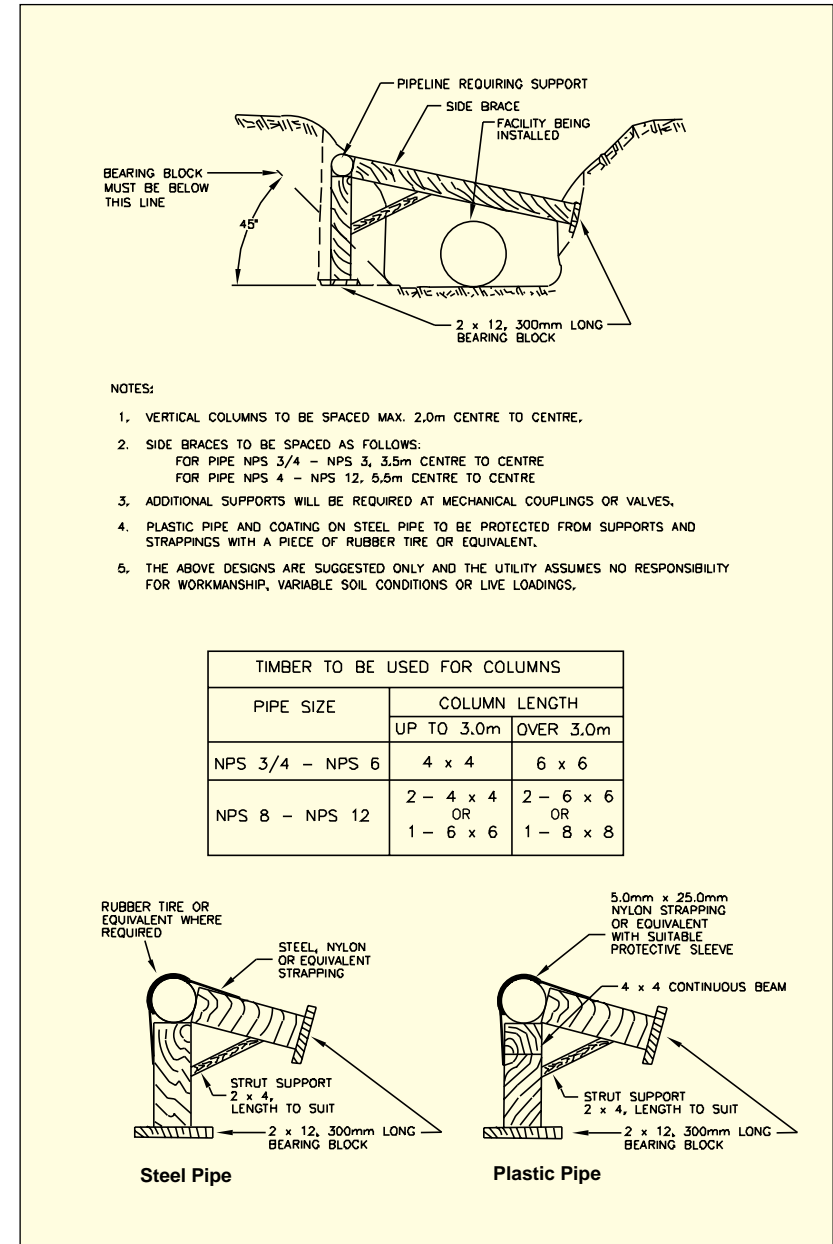
Typical Pipeline Support Crossing Trench

Figure 4



Typical Pipeline Support Parallel to Trench

Figure 5











LOCATION OF THE GAS SYSTEM FOR OTHERS

In order to facilitate work to be undertaken by others, the Gas Company will identify, on the surface of the ground, the location of any of its gas system in a prompt and accurate manner. The cost of this locate service will be borne by the Gas Company. The Gas Company requires hand digging near its pipelines as specified on the locate form.

The chart below illustrates the standard colours that are used in Ontario to identify the various utilities.

Buried Public Utilities will be identified in the field by the following fluorescent colours.

Permanent line markers are installed along pipelines in rural areas.

	Ontario Hydro Local Hydro Traffic Systems
	Gas Lines, Oil Lines, Steam Lines
	Water Systems
	Telephone Lines, Telegraph Lines, Police and Fire Communications, Cable TV Lines
	Sanitary Sewers, Storm Sewers
	Temporary Survey
	Proposed Excavation
	Reclaimed Water, Irrigation & Slurry Lines

Cautionary Note:

Individuals are reminded that the location of the gas system is identified on the surface of the ground. If you are working above, below or in the vicinity of the gas system you are required to meet the requirements of the various Ontario regulations/guidelines that apply and these can be provided by the Gas Company.