



2007 Yearbook of Electricity Distributors

Ontario Energy Board

Published on August 26, 2008





Ontario Energy Board
Commission de l'énergie de l'Ontario

2007 Yearbook of
Electricity Distributors



Background on 2007 Yearbook of Electricity Distributors

The Ontario Energy Board is the regulator of Ontario's natural gas and electricity industries. In the electricity sector, the Board sets transmission and distribution rates, and approves the Independent Electricity System Operator (IESO)'s and Ontario Power Authority (OPA)'s budget and fees. The Board also sets the rate for the Standard Supply Service for distribution utilities that supply electricity (commodity) directly to consumers.

The 2007 Yearbook of Electricity Distributors is to provide interested parties and the general public with financial and operational information collected from Electricity Distributors. It is compiled from data submitted by the Distributors through the Reporting and Record-Keeping Requirements. First Nation Distributors, Hydro One Remotes, and direct connections to the transmission grid are not presented.

Table of Contents

Page

Overview of Ontario Electricity Distributors	3
Individual Ontario Electricity Distributors	
Balance Sheet	13
Income Statement	27
Financial Ratios	41
General information	55
Unitized Statistics and Service Quality Indicators	69
Statistics by Customer Class	83
Glossary of Terms	97

*The Municipality of Dutton-Dunwich and Chatham-Kent Energy Inc. are amalgamating the operations of Dutton Hydro into Middlesex Power Distribution Corporation. The parties have entered into binding negotiations that will see Dutton/Dunwich sell its municipally owned electricity distribution company Dutton Hydro Ltd. to Chatham-Kent Energy Inc ("CKE"). Due to the amalgamation Dutton Hydro has not submitted their RRR filings.





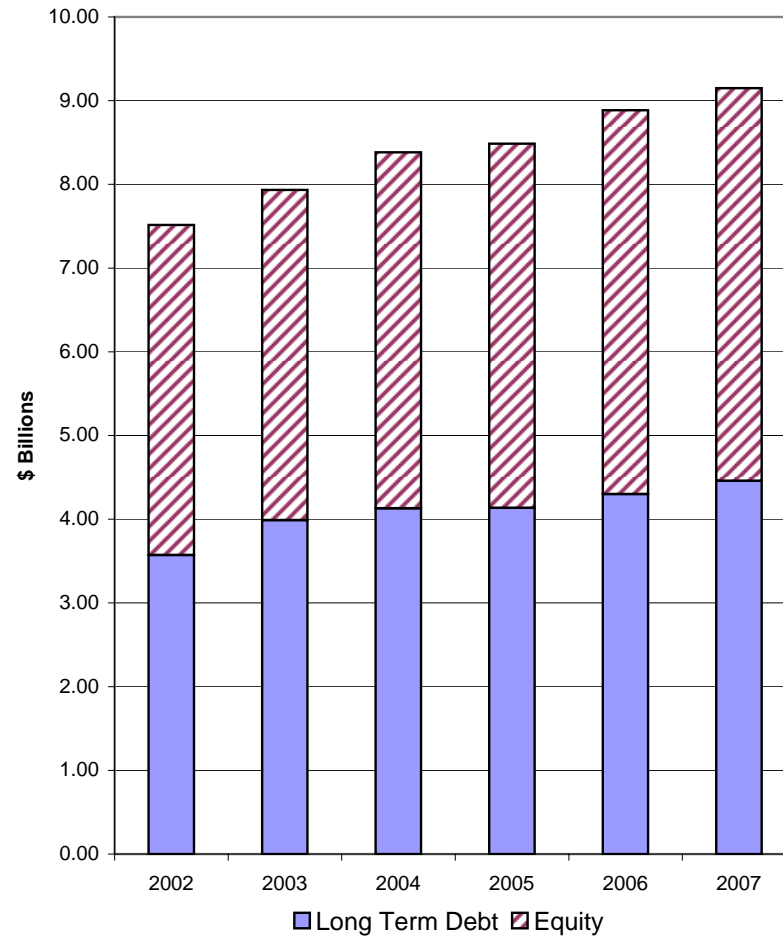
Overview of Ontario Electricity Distributors

FINANCIAL INFORMATION

Balance Sheet

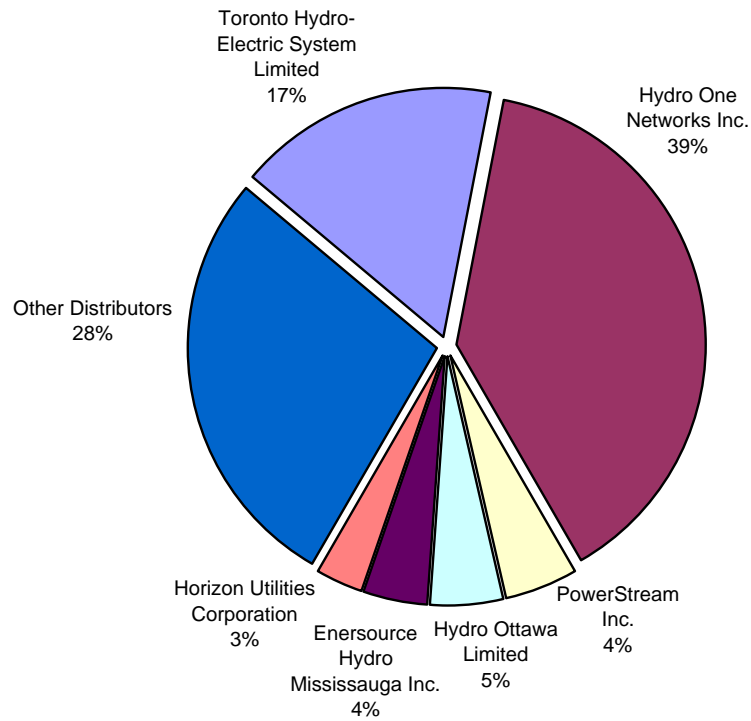
	Year ended December 31, 2007 in \$ 000's
Assets	
Current Assets	\$ 2,983,061
Property Plant & Equipment	
Gross Property Plant & Equipment	\$ 18,165,531
Accumulated Amortization	\$ 8,017,819
Net Property Plant & Equipment	<u>10,147,712</u>
Regulatory Assets	\$ 42,252
Other Non-Current Assets	\$ 109,130
Total Assets	<u><u>\$ 13,282,155</u></u>
Liabilities and Equity	
Current Liabilities	\$ 3,147,389
Regulatory Liabilities	-
Non-Current Liabilities excluding debt	\$ 960,272
Long Term Debt	\$ 4,464,791
Equity	\$ 4,709,703
Total Liabilities & Equity	<u><u>\$ 13,282,155</u></u>

**LT Debt - Equity Split
of Distributors**

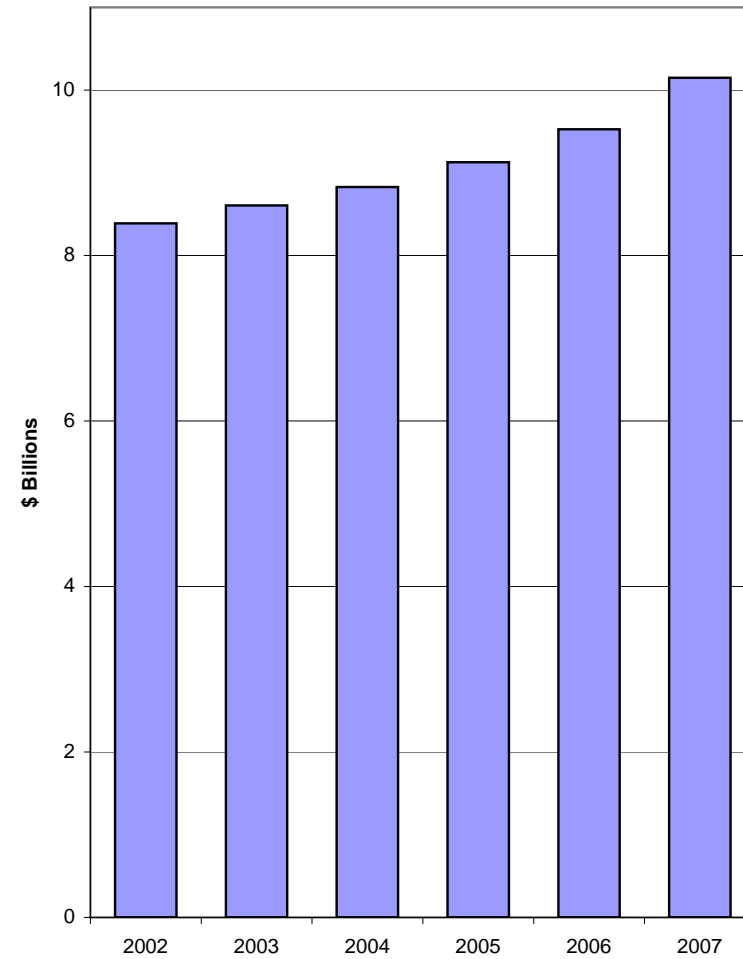




**Net Property Plant & Equipment by
Distributor**
\$10.1 billion

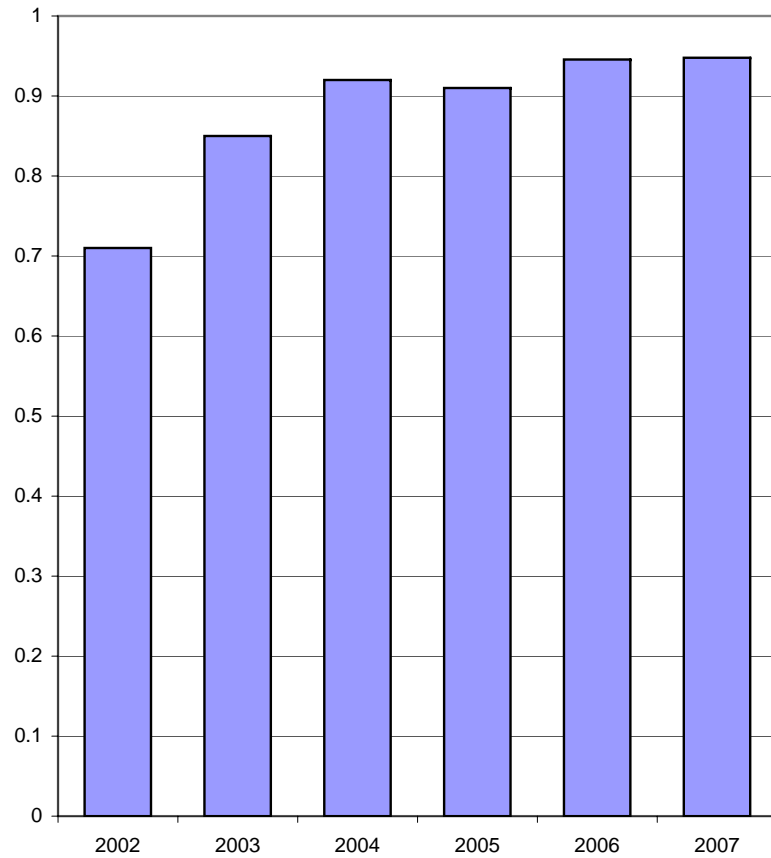


**Total Distributor
Net Property Plant & Equipment**

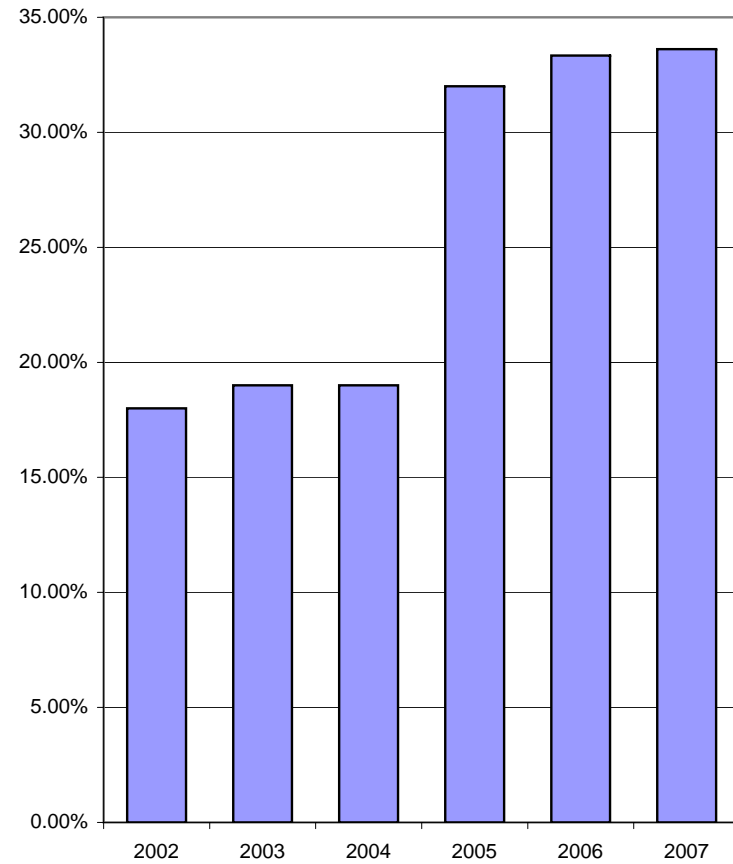




Current Ratio
(Current Assets/Current Liabilities)

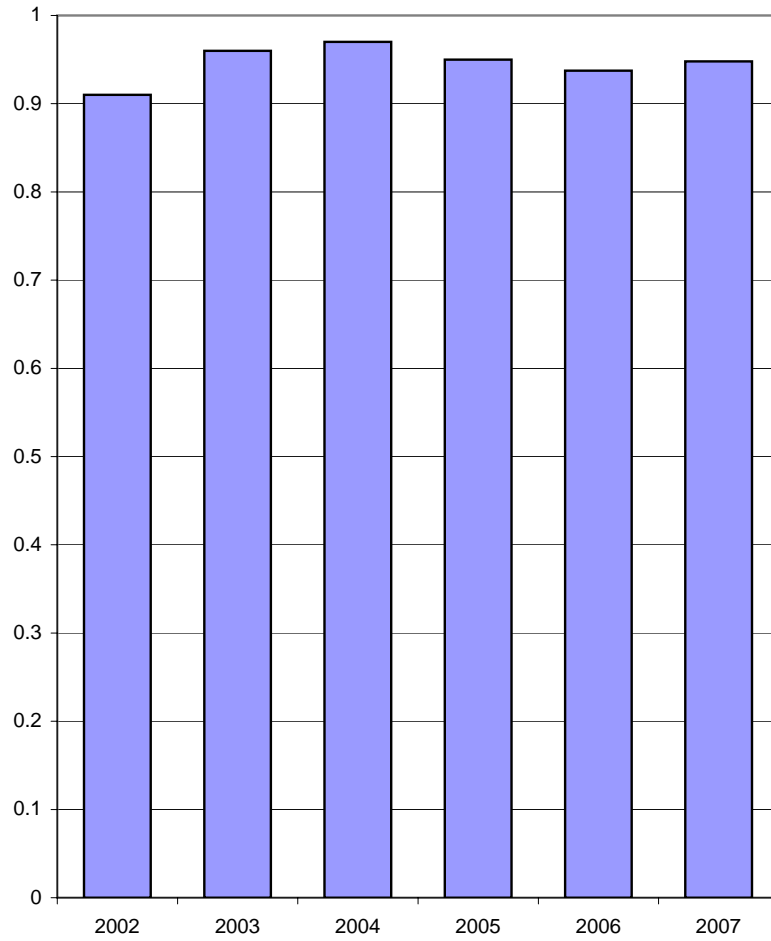


Debt Ratio
(Total Debt/Total Assets)

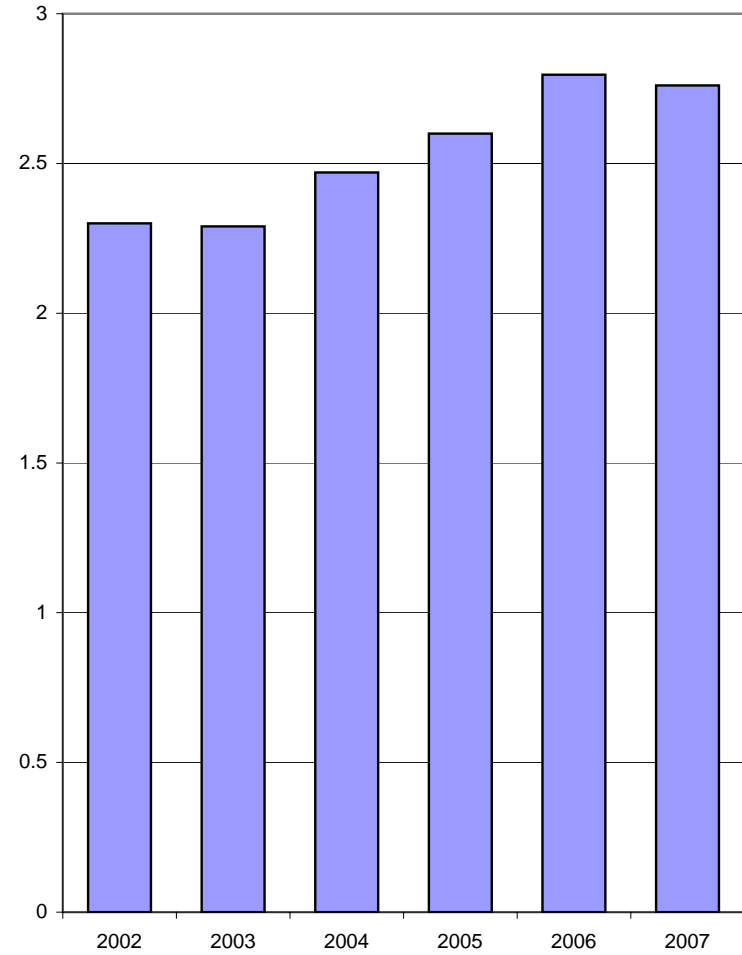




**Debt to Equity Ratio
(Total Debt/Equity)**



**Interest Coverage
(EBIT/Interest Charges)**





Overview of Ontario Electricity Distributors

Income Statement

Year ended December 31,
2007
in \$ 000's

Revenue

Power & Distribution Revenue	\$ 11,969,168
Cost of Power & Related Costs	\$ 9,187,537
Revenue from Distribution	\$ 2,781,631

Distribution Related Expenses

Operation	\$ 249,644
Maintenance	\$ 343,560
Administration	\$ 606,022
Other Expenses	\$ -
Amortization	\$ 710,483
Total Distribution Related Expenses	\$ 1,909,708

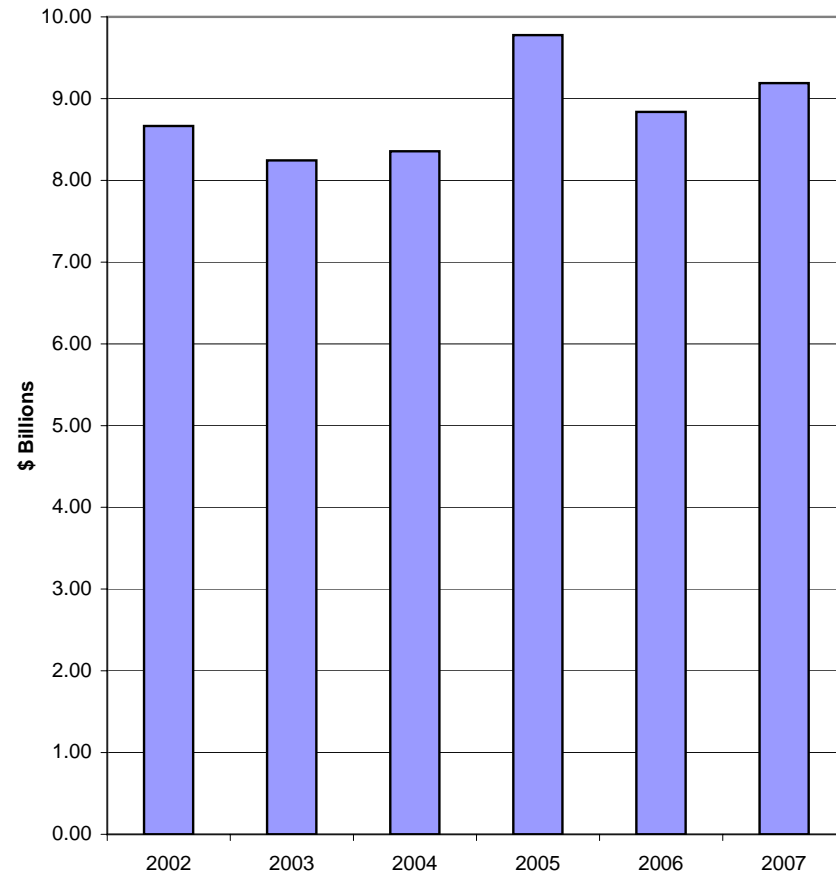
Other Income	\$ 105,663
Other Deductions	\$ 1,987

Earnings before Interest and Taxes	\$ 975,599
Interest Expense	\$ 353,392
Taxes	\$ 288,958

Earnings before Unusual Items	\$ 333,249
Discontinued Operations Gains / (Losses)	-
Extraordinary & Other Gains / (Losses)	\$ 851

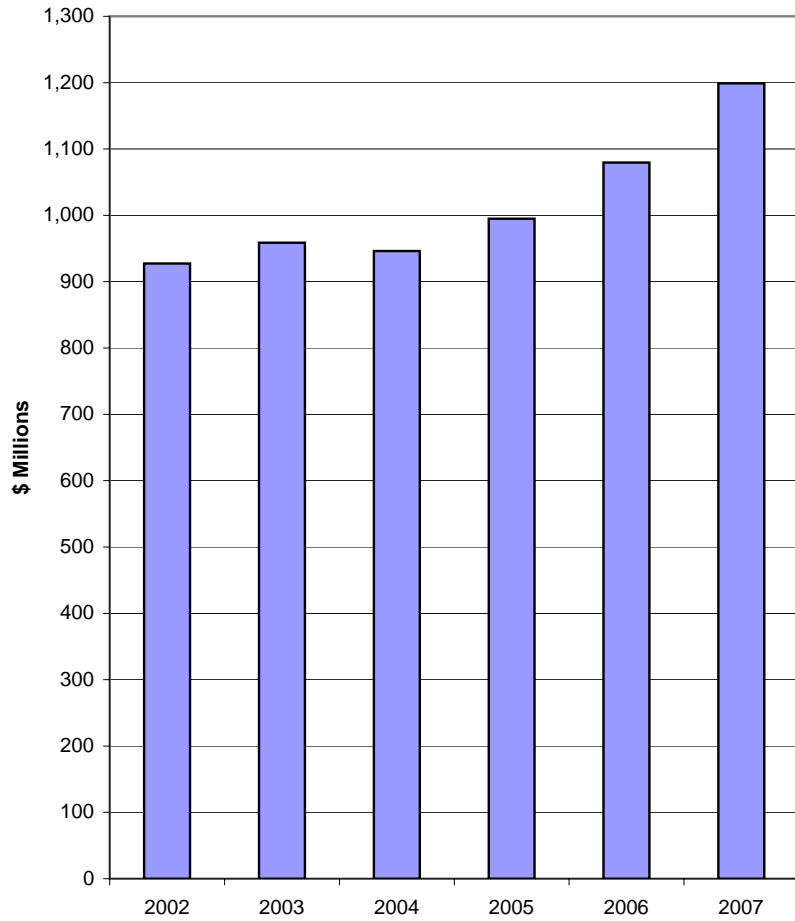
Net Income	\$ 334,100
-------------------	-------------------

Industry Commodity Cost

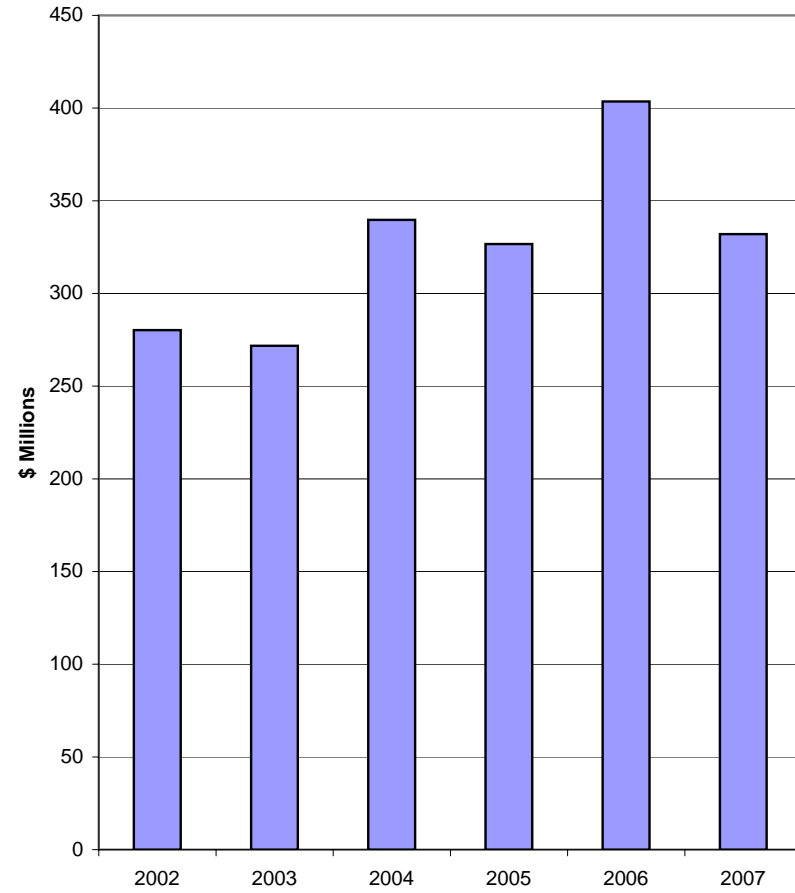




Total Distributor OM&A

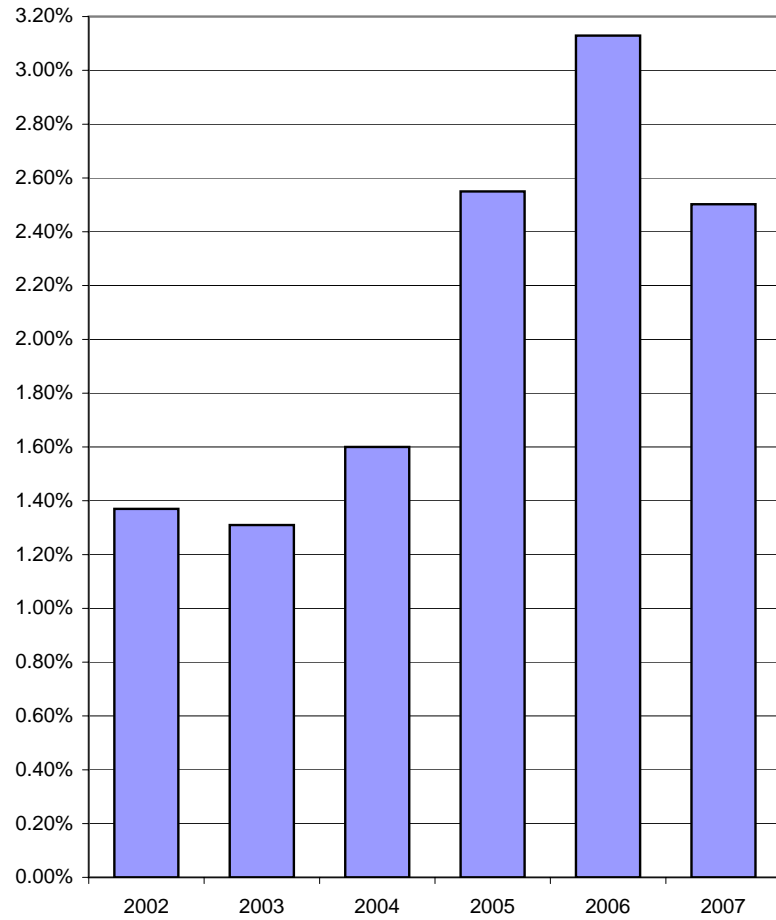


Total Distributor Net Income

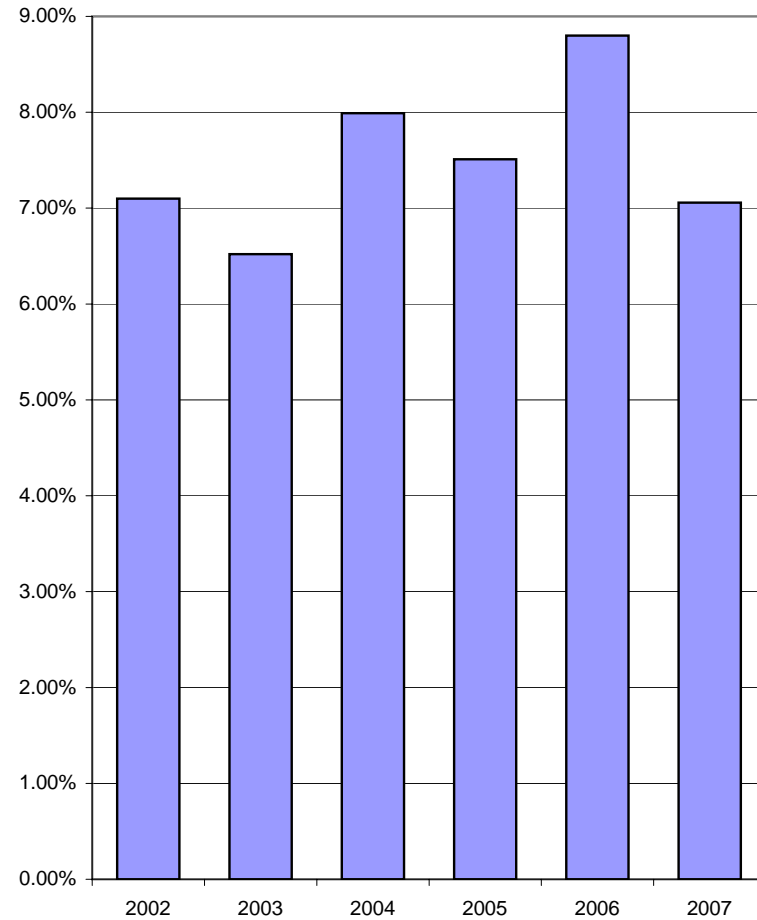




**Financial Statement Return on Assets
(Net Income/Total Assets)**



**Financial Statement Return on Equity
(Net Income/Shareholder Equity)**





Overview of Ontario Electricity Distributors

GENERAL STATISTICS

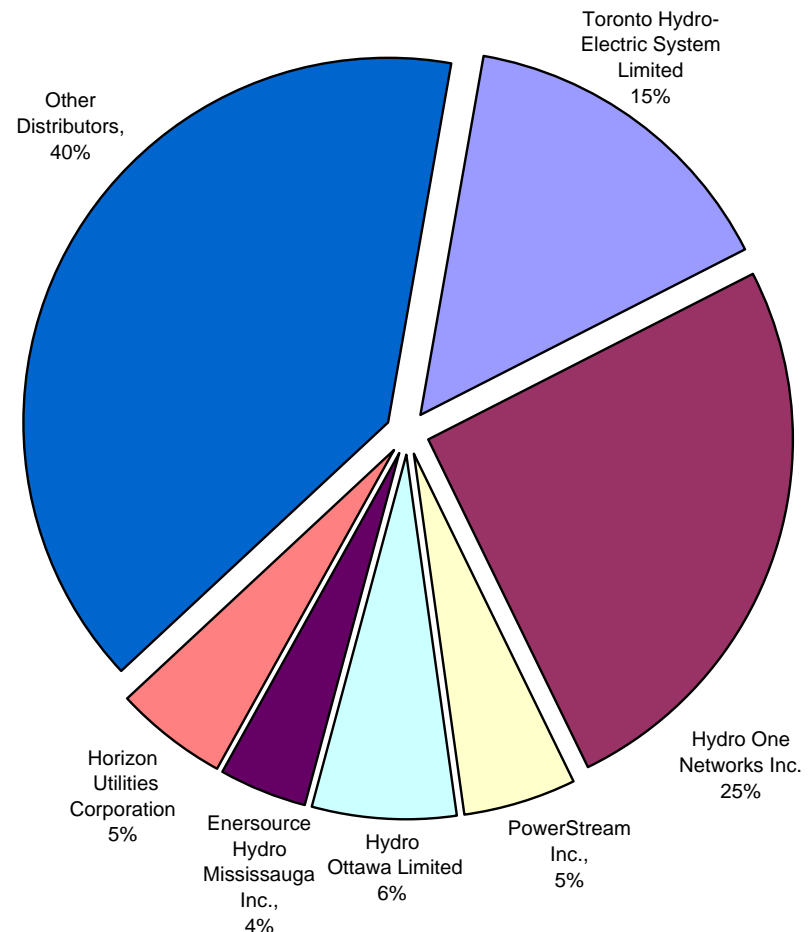
Year ended December 31,
2007

Population Served	12,956,121
Municipal	13,597,463
Seasonal	164,017
Total Customers	4,634,998
Residential Customers	4,158,957
General Service <50kW Customers	427,903
General Service >50kW Customers	47,957
Large User (>5000kW) Customers	181
Total Service Area (sq km)	681,293
% Urban	1%
% Rural	99%
Total km of Line	196,242
Overhead km of line	158,647
Underground km of line	37,595
Total kWh sold (excluding losses)	124,491,527,466
Total Distribution Losses (kWh)	5,416,117,162
Total kWh Purchased	129,907,644,628
Capital Additions in 2007	\$ 1,347,211,657

UNITIZED STATISTICS

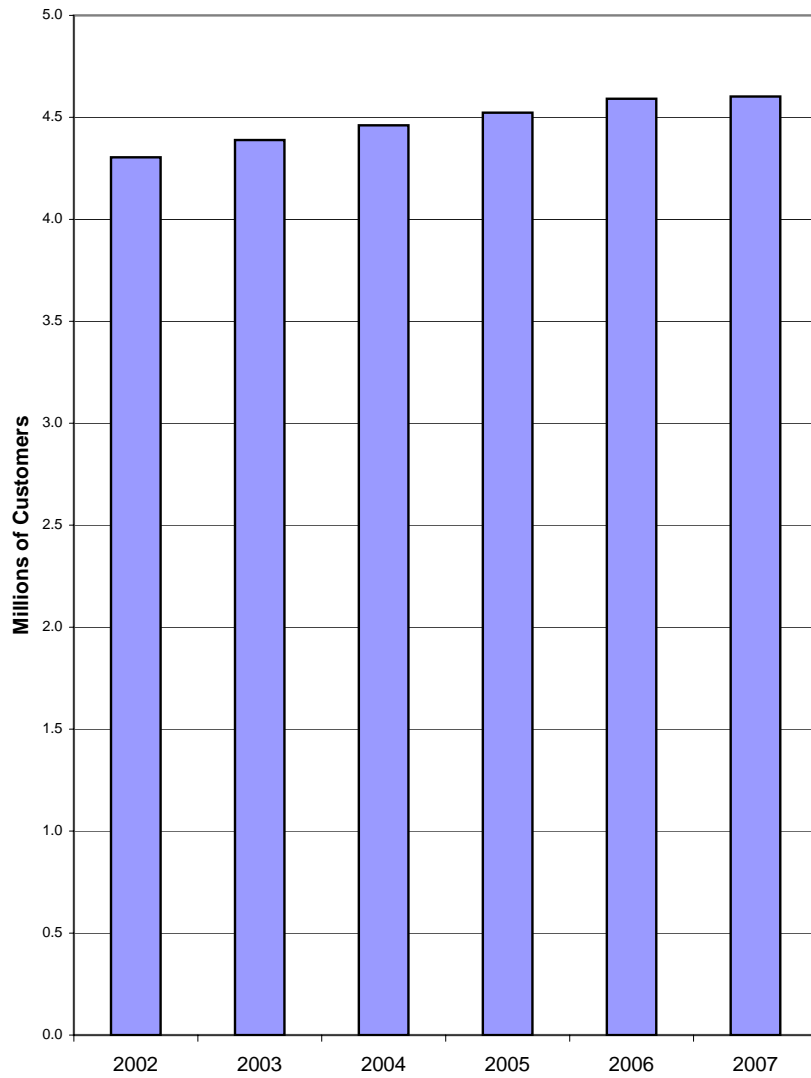
# of Customers per sq km of Service Area	6.80
# of Customers per km of Line	23.62
Average Revenue from Distribution	
Per Customer annually	\$ 600.14
Per Total kWh Purchased	\$ 0.021
Annual Average Cost of Power:	
Per Customer	\$ 1,982
Per Total kWh Purchased	\$ 0.0707
Average monthly Total kWh consumed per customer	2,336
OM&A Per Customer	\$ 259
Net Income Per Customer	\$ 72
Net Fixed Assets per Customer	\$ 2,189

**Number of Customers
by Distributor**

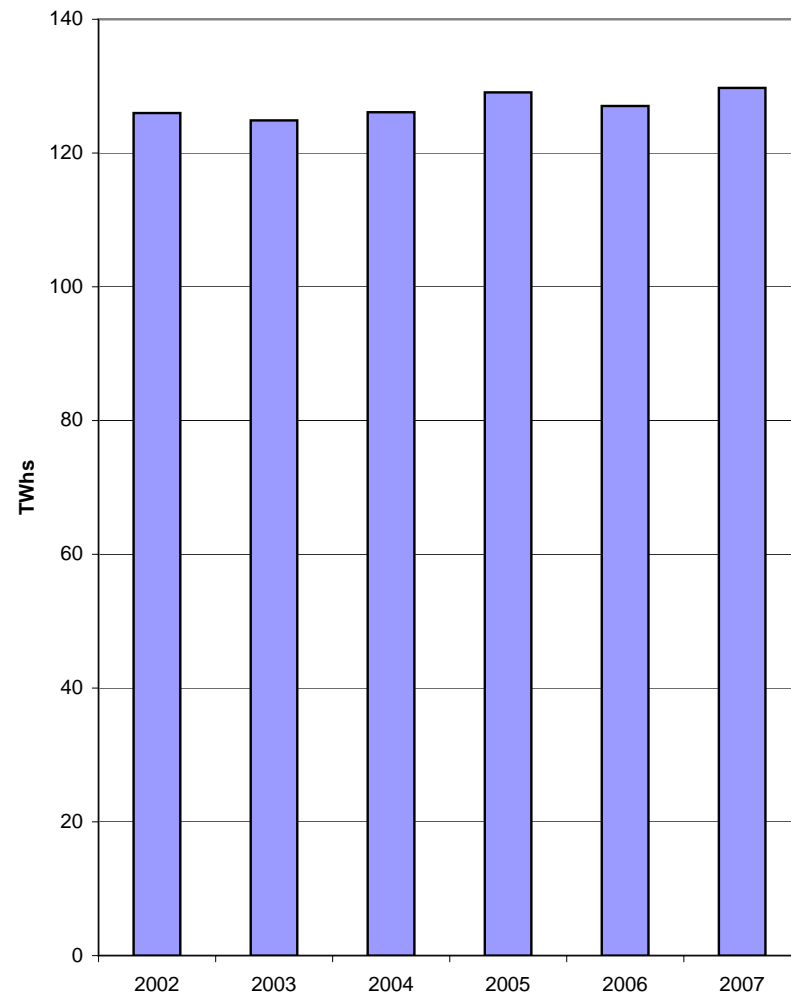




Total Number of Customers of Distributors



Total TWhs Purchased from IESO







Individual Electricity Distributors As of December 31st, 2007 (Alphabetically Listed)	Atikokan Hydro Inc.	Barrie Hydro Distribution Inc.	Bluewater Power Distribution Corporation	Brant County Power Inc.	Brantford Power Inc.	Burlington Hydro Inc.
FINANCIAL INFORMATION						
Balance Sheet						
Assets						
Current Assets	\$ 799,392	\$ 43,563,064	\$ 24,366,059	\$ 7,005,505	\$ 24,734,783	\$ 53,659,380
Property Plant & Equipment						
Gross Property Plant & Equipment	\$ 4,550,369	\$ 237,545,445	\$ 86,614,505	\$ 25,024,674	\$ 73,130,518	\$ 183,379,089
Accumulated Amortization	\$ (2,584,286)	\$ (97,897,299)	\$ (48,844,494)	\$ (6,168,550)	\$ (16,725,548)	\$ (104,290,507)
Net Property Plant & Equipment	\$ 1,966,083	\$ 139,648,146	\$ 37,770,011	\$ 18,856,125	\$ 56,404,970	\$ 79,088,581
Regulatory Assets	\$ (139,542)	\$ (3,638,173)	\$ (3,856,726)	\$ (1,487,635)	\$ (2,960,216)	\$ 22,749
Other Non-Current Assets	\$ -	\$ 4,050,105	\$ -	\$ 611,443	\$ 2,111,474	\$ 48,038
Total Assets	\$ 2,625,933	\$ 183,623,142	\$ 58,279,344	\$ 24,985,438	\$ 80,291,011	\$ 132,818,748
Liabilities						
Current Liabilities	\$ 311,380	\$ 49,376,133	\$ 12,346,519	\$ 3,291,329	\$ 15,445,672	\$ 24,465,650
Non-Current Liabilities excluding debt	\$ 15,316	\$ 5,991,601	\$ 4,562,282	\$ 881,750	\$ 1,387,670	\$ 1,935,751
Long Term Debt	\$ 1,396,009	\$ 45,000,000	\$ 19,377,604	\$ 6,000,000	\$ 33,001,437	\$ 47,878,608
Total Liabilities	1,722,705	100,367,734	36,286,405	10,173,080	49,834,779	74,280,010
Equity	\$ 903,228	\$ 83,255,408	\$ 21,992,939	\$ 14,812,359	\$ 30,456,232	\$ 58,538,739
Total Liabilities & Equity	\$ 2,625,933	\$ 183,623,142	\$ 58,279,344	\$ 24,985,438	\$ 80,291,011	\$ 132,818,748



Individual Electricity Distributors As of December 31st, 2007 (Alphabetically Listed)	COLLUS Power Corp.	Cambridge and North Dumfries Hydro Inc.	Canadian Niagara Power Inc. - Fort Erie	Centre Wellington Hydro Ltd.	Chapleau Public Utilities Corporation	Chatham-Kent Hydro Inc.
FINANCIAL INFORMATION						
Balance Sheet						
Assets						
Current Assets	\$ 12,531,131	\$ 46,815,744	\$ 13,412,160	\$ 9,862,344	\$ 1,386,384	\$ 17,486,777
Property Plant & Equipment						
Gross Property Plant & Equipment	\$ 22,038,469	\$ 154,311,962	\$ 59,032,766	\$ 14,581,313	\$ 2,175,939	\$ 66,397,075
Accumulated Amortization	\$ (11,754,666)	\$ (73,820,461)	\$ (24,032,612)	\$ (7,619,796)	\$ (1,303,139)	\$ (21,462,653)
Net Property Plant & Equipment	\$ 10,283,803	\$ 80,491,501	\$ 35,000,154	\$ 6,961,518	\$ 872,800	\$ 44,934,423
Regulatory Assets	\$ (2,156,428)	\$ (7,601,322)	\$ 1,865,556	\$ (1,052,160)	\$ (317,722)	\$ 2,505,833
Other Non-Current Assets	\$ -	\$ -	\$ 777,222	\$ 37,368	\$ -	\$ -
Total Assets	\$ 20,658,507	\$ 119,705,923	\$ 51,055,091	\$ 15,809,071	\$ 1,941,462	\$ 64,927,033
Liabilities						
Current Liabilities	\$ 7,751,118	\$ 17,869,076	\$ 19,459,801	\$ 2,611,049	\$ 298,956	\$ 11,788,363
Non-Current Liabilities excluding debt	\$ 425,153	\$ 7,142,497	\$ 4,962,459	\$ 561,806	\$ 168,097	\$ 3,798,801
Long Term Debt	\$ 2,827,523	\$ 38,019,703	\$ 13,950,000	\$ 5,046,753	\$ 1,121,529	\$ 23,523,326
Total Liabilities	11,003,794	63,031,276	38,372,260	8,219,608	1,588,583	39,110,490
Equity	\$ 9,654,712	\$ 56,674,647	\$ 12,682,831	\$ 7,589,463	\$ 352,879	\$ 25,816,543
Total Liabilities & Equity	\$ 20,658,507	\$ 119,705,923	\$ 51,055,091	\$ 15,809,071	\$ 1,941,462	\$ 64,927,033



Individual Electricity Distributors As of December 31st, 2007 (Alphabetically Listed)	Clinton Power Corporation	Cooperative Hydro Embrun Inc.	E.L.K. Energy Inc.	ENWIN Powerlines Ltd.	Eastern Ontario Power (CNP)	Enersource Hydro Mississauga Inc.
FINANCIAL INFORMATION						
Balance Sheet						
Assets						
Current Assets	\$ 1,812,799	\$ 2,285,137	\$ 11,582,496	\$ 39,006,714	\$ 1,175,104	\$ 157,537,101
Property Plant & Equipment						
Gross Property Plant & Equipment	\$ 1,394,664	\$ 2,670,320	\$ 20,664,914	\$ 263,527,118	\$ 14,099,556	\$ 770,300,257
Accumulated Amortization	\$ (345,426)	\$ (798,695)	\$ (12,238,748)	\$ (88,326,661)	\$ (3,634,643)	\$ (364,037,045)
Net Property Plant & Equipment	\$ 1,049,238	\$ 1,871,625	\$ 8,426,166	\$ 175,200,457	\$ 10,464,912	\$ 406,263,212
Regulatory Assets	\$ (98,936)	\$ (42,870)	\$ 1,632,486	\$ (4,332,960)	\$ 233,531	\$ (8,899,926)
Other Non-Current Assets	\$ -	\$ -	\$ 84,741	\$ 17,034,883	\$ -	\$ 23,674,385
Total Assets	\$ 2,763,101	\$ 4,113,892	\$ 21,725,889	\$ 226,909,094	\$ 11,873,547	\$ 578,574,772
Liabilities						
Current Liabilities	\$ 1,531,737	\$ 753,541	\$ 2,755,075	\$ 50,658,927	\$ 6,088,742	\$ 74,332,759
Non-Current Liabilities excluding debt	\$ 312,134	\$ 29,150	\$ 1,486,180	\$ 41,039,739	\$ 301,634	\$ 25,640,442
Long Term Debt	\$ -	\$ 2,862,994	\$ 3,900,000	\$ 53,255,973	\$ 2,100,000	\$ 290,000,000
Total Liabilities	1,843,872	3,645,685	8,141,255	144,954,639	8,490,376	389,973,201
Equity	\$ 919,229	\$ 468,207	\$ 13,584,633	\$ 81,954,455	\$ 3,383,171	\$ 188,601,571
Total Liabilities & Equity	\$ 2,763,101	\$ 4,113,892	\$ 21,725,889	\$ 226,909,094	\$ 11,873,547	\$ 578,574,772



Individual Electricity Distributors As of December 31st, 2007 (Alphabetically Listed)	Erie Thames Powerlines Corporation	Espanola Regional Hydro Distribution Corporation	Essex Powerlines Corporation	Festival Hydro Inc.	Fort Frances Power Corporation	Grand Valley Energy Inc.
FINANCIAL INFORMATION						
Balance Sheet						
Assets						
Current Assets	\$ 7,448,727	\$ 2,717,461	\$ 11,779,510	\$ 13,166,805	\$ 4,006,816	\$ 375,866
Property Plant & Equipment						
Gross Property Plant & Equipment	\$ 21,582,050	\$ 6,110,203	\$ 37,179,289	\$ 65,817,733	\$ 9,645,591	\$ 1,092,129
Accumulated Amortization	\$ (4,887,735)	\$ (4,037,772)	\$ (10,078,196)	\$ (35,549,074)	\$ (6,479,990)	\$ (779,763)
Net Property Plant & Equipment	\$ 16,694,315	\$ 2,072,430	\$ 27,101,093	\$ 30,268,659	\$ 3,165,601	\$ 312,366
Regulatory Assets	\$ 2,296,693	\$ 384,087	\$ (643,370)	\$ (1,585,347)	\$ (347,560)	\$ 7,901
Other Non-Current Assets	\$ 4,000	\$ -	\$ -	\$ 117,002	\$ -	\$ -
Total Assets	\$ 26,443,735	\$ 5,173,978	\$ 38,237,233	\$ 41,967,119	\$ 6,824,857	\$ 696,134
Liabilities						
Current Liabilities	\$ 8,796,089	\$ 1,862,458	\$ 14,772,385	\$ 22,157,947	\$ 830,665	\$ 172,941
Non-Current Liabilities excluding debt	\$ 1,060,740	\$ 226,512	\$ 396,462	\$ 76,870	\$ 131,367	\$ 39,734
Long Term Debt	\$ 8,524,439	\$ 3,623,344	\$ 5,955,763	\$ -	\$ -	\$ -
Total Liabilities	18,381,268	5,712,314	21,124,610	22,234,818	962,032	212,676
Equity	\$ 8,062,468	\$ (538,336)	\$ 17,112,624	\$ 19,732,301	\$ 5,862,825	\$ 483,458
Total Liabilities & Equity	\$ 26,443,735	\$ 5,173,978	\$ 38,237,233	\$ 41,967,119	\$ 6,824,857	\$ 696,134



Individual Electricity Distributors As of December 31st, 2007 (Alphabetically Listed)	Great Lakes Power Limited	Greater Sudbury Hydro Inc.	Grimsby Power Incorporated	Guelph Hydro Electric Systems Inc.	Haldimand County Hydro Inc.	Halton Hills Hydro Inc.
FINANCIAL INFORMATION						
Balance Sheet						
Assets						
Current Assets	\$ 7,730,217	\$ 33,484,519	\$ 6,268,479	\$ 17,305,811	\$ 12,713,244	\$ 13,684,522
Property Plant & Equipment						
Gross Property Plant & Equipment	\$ 102,983,288	\$ 145,806,577	\$ 21,883,023	\$ 122,858,166	\$ 46,054,708	\$ 42,156,580
Accumulated Amortization	\$ (45,480,757)	\$ (86,459,259)	\$ (10,951,970)	\$ (37,420,640)	\$ (15,628,649)	\$ (12,886,963)
Net Property Plant & Equipment	\$ 57,502,531	\$ 59,347,318	\$ 10,931,053	\$ 85,437,526	\$ 30,426,058	\$ 29,269,617
Regulatory Assets	\$ 15,253,574	\$ (1,387,691)	\$ (1,255,757)	\$ 36,982	\$ (458,127)	\$ 2,078,173
Other Non-Current Assets	\$ -	\$ 400,010	\$ 1,200,000	\$ 196,880	\$ -	\$ 2,090,809
Total Assets	\$ 80,486,323	\$ 91,844,156	\$ 17,143,775	\$ 102,977,200	\$ 42,681,175	\$ 47,123,121
Liabilities						
Current Liabilities	\$ 59,212,112	\$ 60,092,269	\$ 2,745,737	\$ 11,309,757	\$ 5,642,148	\$ 8,711,386
Non-Current Liabilities excluding debt	\$ (158,254)	\$ 12,345,098	\$ 20,275	\$ 8,332,663	\$ 219,364	\$ 816,474
Long Term Debt	\$ -	\$ -	\$ 5,782,746	\$ 30,000,273	\$ 11,265,000	\$ 16,141,969
Total Liabilities	59,053,858	72,437,367	8,548,758	49,642,694	17,126,511	25,669,829
Equity	\$ 21,432,465	\$ 19,406,789	\$ 8,595,017	\$ 53,334,506	\$ 25,554,663	\$ 21,453,292
Total Liabilities & Equity	\$ 80,486,323	\$ 91,844,156	\$ 17,143,775	\$ 102,977,200	\$ 42,681,175	\$ 47,123,121



Individual Electricity Distributors As of December 31st, 2007 (Alphabetically Listed)	Hearst Power Distribution Company Limited	Horizon Utilities Corporation	Hydro 2000 Inc.	Hydro Hawkesbury Inc.	Hydro One Brampton Networks Inc.	Hydro One Networks Inc.
FINANCIAL INFORMATION						
Balance Sheet						
Assets						
Current Assets	\$ 5,691,410	\$ 103,716,710	\$ 1,067,184	\$ 6,097,050	\$ 63,749,670	\$ 605,935,800
Property Plant & Equipment						
Gross Property Plant & Equipment	\$ 3,915,269	\$ 579,502,709	\$ 650,367	\$ 3,096,612	\$ 495,210,618	\$ 6,251,201,000
Accumulated Amortization	\$ (2,933,719)	\$ (277,963,182)	\$ (275,165)	\$ (1,173,118)	\$ (199,060,181)	\$ (2,305,174,300)
Net Property Plant & Equipment	\$ 981,550	\$ 301,539,527	\$ 375,202	\$ 1,923,495	\$ 296,150,437	\$ 3,946,026,700
Regulatory Assets	\$ (824,515)	\$ (9,003,337)	\$ 294,644	\$ (1,149,799)	\$ (6,325,559)	\$ 157,381,800
Other Non-Current Assets	\$ -	\$ -	\$ -	\$ -	\$ 633,713	\$ 34,025,100
Total Assets	\$ 5,848,445	\$ 396,252,900	\$ 1,737,030	\$ 6,870,745	\$ 354,208,262	\$ 4,743,369,400
Liabilities						
Current Liabilities	\$ 1,413,332	\$ 96,116,358	\$ 688,422	\$ 2,447,885	\$ 60,761,709	\$ 832,556,900
Non-Current Liabilities excluding debt	\$ 6,158	\$ 14,304,755	\$ 4,131	\$ 520,874	\$ 5,343,258	\$ 513,919,300
Long Term Debt	\$ 1,700,000	\$ 116,000,000	\$ 324,713	\$ 1,342,422	\$ 143,000,000	\$ 1,873,060,000
Total Liabilities	3,119,490	226,421,113	1,017,266	4,311,182	209,104,967	3,219,536,200
Equity	\$ 2,728,956	\$ 169,831,787	\$ 719,764	\$ 2,559,563	\$ 145,103,295	\$ 1,523,833,200
Total Liabilities & Equity	\$ 5,848,445	\$ 396,252,900	\$ 1,737,030	\$ 6,870,745	\$ 354,208,262	\$ 4,743,369,400



Individual Electricity Distributors As of December 31st, 2007 (Alphabetically Listed)	Hydro Ottawa Limited	Innisfil Hydro Distribution Systems Limited	Kenora Hydro Electric Corporation Ltd.	Kingston Electricity Distribution Limited	Kitchener-Wilmot Hydro Inc.	Lakefront Utilities Inc.
FINANCIAL INFORMATION						
Balance Sheet						
Assets						
Current Assets	\$ 149,795,402	\$ 7,390,982	\$ 4,007,532	\$ 19,134,351	\$ 72,231,179	\$ 6,416,944
Property Plant & Equipment						
Gross Property Plant & Equipment	\$ 932,500,750	\$ 40,461,730	\$ 13,325,009	\$ 36,192,515	\$ 257,533,852	\$ 19,774,954
Accumulated Amortization	\$ (455,470,272)	\$ (23,392,529)	\$ (5,699,741)	\$ (11,849,144)	\$ (122,918,702)	\$ (9,438,134)
Net Property Plant & Equipment	\$ 477,030,478	\$ 17,069,201	\$ 7,625,268	\$ 24,343,371	\$ 134,615,150	\$ 10,336,820
Regulatory Assets	\$ 10,299,985	\$ 1,117,232	\$ (481,658)	\$ (2,392,257)	\$ (4,831,076)	\$ 666,419
Other Non-Current Assets	\$ 390,533	\$ 312,280	\$ 593,057	\$ 500,000	\$ -	\$ -
Total Assets	\$ 637,516,398	\$ 25,889,695	\$ 11,744,200	\$ 41,585,465	\$ 202,015,253	\$ 17,420,184
Liabilities						
Current Liabilities	\$ 123,357,100	\$ 4,084,806	\$ 1,454,006	\$ 11,696,900	\$ 23,378,169	\$ 3,209,713
Non-Current Liabilities excluding debt	\$ 15,855,048	\$ 669,141	\$ 144,085	\$ 2,440,445	\$ 8,731,310	\$ 522,765
Long Term Debt	\$ 282,185,000	\$ 7,728,444	\$ 3,069,279	\$ 10,880,619	\$ 76,962,142	\$ 7,000,000
Total Liabilities	421,397,148	12,482,391	4,667,370	25,017,964	109,071,621	10,732,477
Equity	\$ 216,119,250	\$ 13,407,304	\$ 7,076,830	\$ 16,567,501	\$ 92,943,632	\$ 6,687,707
Total Liabilities & Equity	\$ 637,516,398	\$ 25,889,695	\$ 11,744,200	\$ 41,585,465	\$ 202,015,253	\$ 17,420,184



Individual Electricity Distributors As of December 31st, 2007 (Alphabetically Listed)	Lakeland Power Distribution Ltd.	London Hydro Inc.	Middlesex Power Distribution Corporation	Midland Power Utility Corporation	Milton Hydro Distribution Inc.	Newbury Power Inc.
FINANCIAL INFORMATION						
Balance Sheet						
Assets						
Current Assets	\$ 4,857,231	\$ 76,010,161	\$ 4,202,831	\$ 5,459,384	\$ 18,165,430	\$ 124,503
Property Plant & Equipment						
Gross Property Plant & Equipment	\$ 18,778,725	\$ 328,419,596	\$ 15,785,645	\$ 15,995,366	\$ 73,498,052	\$ 280,968
Accumulated Amortization	\$ (6,452,406)	\$ (152,174,478)	\$ (8,383,709)	\$ (9,364,816)	\$ (38,390,841)	\$ (142,487)
Net Property Plant & Equipment	\$ 12,326,320	\$ 176,245,118	\$ 7,401,936	\$ 6,630,550	\$ 35,107,211	\$ 138,481
Regulatory Assets	\$ 991,974	\$ (42,019)	\$ 485,835	\$ 44,297	\$ 19,771	\$ 5,620
Other Non-Current Assets	\$ -	\$ -	\$ -	\$ 1,260,000	\$ -	\$ -
Total Assets	\$ 18,175,525	\$ 252,213,260	\$ 12,090,602	\$ 13,394,230	\$ 53,292,412	\$ 268,604
Liabilities						
Current Liabilities	\$ 3,500,442	\$ 40,587,900	\$ 2,882,381	\$ 3,574,163	\$ 10,617,050	\$ 52,277
Non-Current Liabilities excluding debt	\$ 259,313	\$ 9,845,831	\$ 798,451	\$ 472,276	\$ 1,811,391	\$ -
Long Term Debt	\$ 3,487,500	\$ 70,000,000	\$ 4,300,000	\$ 1,122,519	\$ 14,934,210	\$ 74,570
Total Liabilities	7,247,255	120,433,731	7,980,833	5,168,958	27,362,651	126,847
Equity	\$ 10,928,270	\$ 131,779,529	\$ 4,109,769	\$ 8,225,272	\$ 25,929,761	\$ 141,757
Total Liabilities & Equity	\$ 18,175,525	\$ 252,213,260	\$ 12,090,602	\$ 13,394,230	\$ 53,292,412	\$ 268,604



Individual Electricity Distributors As of December 31st, 2007 (Alphabetically Listed)	Newmarket - Tay Power Distribution Ltd.	Niagara Falls Hydro Inc.	Niagara-on-the- Lake Hydro Inc.	Norfolk Power Distribution Inc.	North Bay Hydro Distribution Limited	Northern Ontario Wires Inc.
FINANCIAL INFORMATION						
Balance Sheet						
Assets						
Current Assets	\$ 18,813,665	\$ 28,647,924	\$ 4,962,655	\$ 9,044,045	\$ 25,925,783	\$ 3,925,308
Property Plant & Equipment						
Gross Property Plant & Equipment	\$ 95,163,593	\$ 120,333,934	\$ 35,266,454	\$ 72,185,562	\$ 71,054,560	\$ 6,082,158
Accumulated Amortization	\$ (48,219,039)	\$ (58,081,913)	\$ (16,014,701)	\$ (30,882,579)	\$ (41,790,298)	\$ (2,568,411)
Net Property Plant & Equipment	\$ 46,944,554	\$ 62,252,021	\$ 19,251,753	\$ 41,302,982	\$ 29,264,262	\$ 3,513,746
Regulatory Assets	\$ 3,413,172	\$ (432,478)	\$ (676,889)	\$ (100,929)	\$ 4,349,796	\$ (59,319)
Other Non-Current Assets	\$ -	\$ -	\$ 369,325	\$ 3,184	\$ -	\$ -
Total Assets	\$ 69,171,391	\$ 90,467,467	\$ 23,906,844	\$ 50,249,283	\$ 59,539,841	\$ 7,379,736
Liabilities						
Current Liabilities	\$ 8,997,387	\$ 15,951,978	\$ 7,371,867	\$ 8,004,341	\$ 7,815,714	\$ 2,149,521
Non-Current Liabilities excluding debt	\$ 5,072,333	\$ 4,549,145	\$ 832,772	\$ 779,472	\$ 5,043,230	\$ 10,504
Long Term Debt	\$ 24,178,821	\$ 30,628,864	\$ 6,566,333	\$ 16,793,514	\$ 19,511,601	\$ 2,035,524
Total Liabilities	38,248,542	51,129,987	14,770,972	25,577,327	32,370,545	4,195,549
Equity	\$ 30,922,849	\$ 39,337,479	\$ 9,135,873	\$ 24,671,956	\$ 27,169,296	\$ 3,184,187
Total Liabilities & Equity	\$ 69,171,391	\$ 90,467,467	\$ 23,906,844	\$ 50,249,283	\$ 59,539,841	\$ 7,379,736



Individual Electricity Distributors As of December 31st, 2007 (Alphabetically Listed)	Oakville Hydro Electricity Distribution Inc.	Orangeville Hydro Limited	Orillia Power Distribution Corporation	Oshawa PUC Networks Inc.	Ottawa River Power Corporation	PUC Distribution Inc.
FINANCIAL INFORMATION						
Balance Sheet						
Assets						
Current Assets	\$ 41,892,807	\$ 6,267,011	\$ 10,744,627	\$ 36,074,257	\$ 12,770,966	\$ 18,151,288
Property Plant & Equipment						
Gross Property Plant & Equipment	\$ 161,932,317	\$ 26,924,684	\$ 36,927,330	\$ 118,957,982	\$ 22,537,118	\$ 78,671,492
Accumulated Amortization	\$ (59,959,914)	\$ (13,990,623)	\$ (21,882,506)	\$ (70,201,259)	\$ (14,348,516)	\$ (42,459,337)
Net Property Plant & Equipment	\$ 101,972,403	\$ 12,934,062	\$ 15,044,823	\$ 48,756,723	\$ 8,188,602	\$ 36,212,155
Regulatory Assets	\$ (6,700,913)	\$ (1,117,615)	\$ (250,837)	\$ (56,557)	\$ (2,327,607)	\$ (118,477)
Other Non-Current Assets	\$ 2,285,867	\$ -	\$ 12,968	\$ -	\$ -	\$ 5,145
Total Assets	\$ 139,450,164	\$ 18,083,458	\$ 25,551,582	\$ 84,774,423	\$ 18,631,960	\$ 54,250,111
Liabilities						
Current Liabilities	\$ 30,190,669	\$ 3,291,591	\$ 3,770,190	\$ 12,653,311	\$ 4,457,953	\$ 9,348,116
Non-Current Liabilities excluding debt	\$ 2,082,613	\$ 673,194	\$ 1,187,820	\$ 13,321,299	\$ 703,819	\$ 189,232
Long Term Debt	\$ 54,379,739	\$ 6,243,418	\$ 9,762,000	\$ 30,064,000	\$ 5,585,838	\$ 41,940,000
Total Liabilities	86,653,021	10,208,203	14,720,010	56,038,610	10,747,610	51,477,348
Equity	\$ 52,797,143	\$ 7,875,255	\$ 10,831,571	\$ 28,735,813	\$ 7,884,351	\$ 2,772,763
Total Liabilities & Equity	\$ 139,450,164	\$ 18,083,458	\$ 25,551,582	\$ 84,774,423	\$ 18,631,960	\$ 54,250,111



Individual Electricity Distributors As of December 31st, 2007 (Alphabetically Listed)	Parry Sound Power Corporation	Peninsula West Utilities Limited	Peterborough Distribution Incorporated	Port Colborne (CNP)	PowerStream Inc.	Renfrew Hydro Inc.
FINANCIAL INFORMATION						
Balance Sheet						
Assets						
Current Assets	\$ 5,049,350	\$ 9,874,715	\$ 15,095,104	\$ 2,973,986	\$ 142,684,139	\$ 4,487,670
Property Plant & Equipment						
Gross Property Plant & Equipment	\$ 10,640,823	\$ 46,961,294	\$ 66,887,087	\$ 9,406,187	\$ 888,773,112	\$ 11,176,446
Accumulated Amortization	\$ (6,487,600)	\$ (25,429,749)	\$ (20,852,125)	\$ (953,822)	\$ (426,390,843)	\$ (7,026,241)
Net Property Plant & Equipment	\$ 4,153,223	\$ 21,531,545	\$ 46,034,962	\$ 8,452,364	\$ 462,382,269	\$ 4,150,205
Regulatory Assets	\$ (300,640)	\$ (1,126,212)	\$ (579,677)	\$ 936,089	\$ (7,799,891)	\$ (749,741)
Other Non-Current Assets	\$ 100	\$ -	\$ -	\$ 251,940	\$ 11,716,942	\$ -
Total Assets	\$ 8,902,033	\$ 30,280,048	\$ 60,550,389	\$ 12,614,379	\$ 608,983,459	\$ 7,888,134
Liabilities						
Current Liabilities	\$ 1,806,113	\$ 16,428,658	\$ 9,490,524	\$ 13,236,820	\$ 121,880,265	\$ 4,457,378
Non-Current Liabilities excluding debt	\$ 159,741	\$ 426,859	\$ 1,335,751	\$ 234,950	\$ 24,763,346	\$ 199,469
Long Term Debt	\$ 2,433,728	\$ -	\$ 23,157,680	\$ -	\$ 253,187,478	\$ 61,539
Total Liabilities	4,399,581	16,855,516	33,983,955	13,471,770	399,831,089	4,718,386
Equity	\$ 4,502,452	\$ 13,424,532	\$ 26,566,434	\$ (857,391)	\$ 209,152,370	\$ 3,169,748
Total Liabilities & Equity	\$ 8,902,033	\$ 30,280,048	\$ 60,550,389	\$ 12,614,379	\$ 608,983,459	\$ 7,888,134



Individual Electricity Distributors As of December 31st, 2007 (Alphabetically Listed)	Rideau St. Lawrence Distribution Inc.	Sioux Lookout Hydro Inc.	St. Thomas Energy Inc.	Thunder Bay Hydro Electricity Distribution Inc.	Tillsonburg Hydro Inc.	Toronto Hydro- Electric System Limited
FINANCIAL INFORMATION						
Balance Sheet						
Assets						
Current Assets	\$ 3,254,638	\$ 3,171,180	\$ 6,637,133	\$ 32,417,513	\$ 4,101,388	\$ 600,880,340
Property Plant & Equipment						
Gross Property Plant & Equipment	\$ 4,690,591	\$ 6,917,367	\$ 35,397,292	\$ 133,947,869	\$ 13,042,205	\$ 3,653,725,242
Accumulated Amortization	\$ (1,138,605)	\$ (1,964,631)	\$ (16,679,885)	\$ (73,220,225)	\$ (7,124,294)	\$ (1,870,993,473)
Net Property Plant & Equipment	\$ 3,551,986	\$ 4,952,736	\$ 18,717,406	\$ 60,727,644	\$ 5,917,911	\$ 1,782,731,769
Regulatory Assets	\$ 634,082	\$ 342,138	\$ (550,479)	\$ (6,152,147)	\$ (17,930)	\$ (40,597,554)
Other Non-Current Assets	\$ -	\$ -	\$ 705,899	\$ 34,080	\$ 3,056,674	\$ 484,384
Total Assets	\$ 7,440,706	\$ 8,466,054	\$ 25,509,960	\$ 87,027,091	\$ 13,058,044	\$ 2,343,498,939
Liabilities						
Current Liabilities	\$ 3,775,929	\$ 2,283,585	\$ 5,322,668	\$ 10,612,190	\$ 1,801,765	\$ 1,018,145,377
Non-Current Liabilities excluding debt	\$ 110,306	\$ 720,744	\$ 1,056,399	\$ 3,487,108	\$ 120,688	\$ 173,788,049
Long Term Debt	\$ 300,090	\$ 2,502,989	\$ 7,714,426	\$ 33,490,500	\$ 3,056,674	\$ 425,057,739
Total Liabilities	4,186,325	5,507,318	14,093,492	47,589,798	4,979,127	1,616,991,164
Equity	\$ 3,254,380	\$ 2,958,736	\$ 11,416,467	\$ 39,437,293	\$ 8,078,916	\$ 726,507,775
Total Liabilities & Equity	\$ 7,440,706	\$ 8,466,054	\$ 25,509,960	\$ 87,027,091	\$ 13,058,044	\$ 2,343,498,939



Individual Electricity Distributors As of December 31st, 2007 (Alphabetically Listed)	Veridian Connections Inc.	Wasaga Distribution Inc.	Waterloo North Hydro Inc.	Welland Hydro- Electric System Corp.	Wellington North Power Inc.	West Coast Huron Energy Inc.
FINANCIAL INFORMATION						
Balance Sheet						
Assets						
Current Assets	\$ 69,009,851	\$ 2,495,194	\$ 41,730,735	\$ 14,813,067	\$ 1,905,982	\$ 2,154,767
Property Plant & Equipment						
Gross Property Plant & Equipment	\$ 285,818,385	\$ 17,694,703	\$ 177,181,865	\$ 42,252,781	\$ 8,395,754	\$ 5,318,060
Accumulated Amortization	\$ (147,435,514)	\$ (9,340,896)	\$ (83,930,906)	\$ (22,195,330)	\$ (4,834,173)	\$ (1,576,584)
Net Property Plant & Equipment	\$ 138,382,871	\$ 8,353,808	\$ 93,250,959	\$ 20,057,451	\$ 3,561,581	\$ 3,741,476
Regulatory Assets	\$ (10,805,249)	\$ (1,735,731)	\$ (13,313,765)	\$ (635,403)	\$ (384,509)	\$ (409,238)
Other Non-Current Assets	\$ -	\$ -	\$ 50,779	\$ -	\$ -	\$ 1
Total Assets	\$ 196,587,473	\$ 9,113,271	\$ 121,718,709	\$ 34,235,116	\$ 5,083,054	\$ 5,487,006
Liabilities						
Current Liabilities	\$ 44,207,159	\$ (1,934,422)	\$ 23,778,158	\$ 4,272,027	\$ 1,339,656	\$ 718,446
Non-Current Liabilities excluding debt	\$ 10,413,287	\$ (14,556)	\$ 5,052,591	\$ 2,167,849	\$ 438,976	\$ -
Long Term Debt	\$ 70,371,006	\$ 3,593,269	\$ 40,402,432	\$ 13,499,953	\$ 1,385,015	\$ 974,454
Total Liabilities	124,991,452	1,644,291	69,233,181	19,939,829	3,163,647	1,692,900
Equity	\$ 71,596,021	\$ 7,468,980	\$ 52,485,528	\$ 14,295,287	\$ 1,919,407	\$ 3,794,106
Total Liabilities & Equity	\$ 196,587,473	\$ 9,113,271	\$ 121,718,709	\$ 34,235,116	\$ 5,083,054	\$ 5,487,006



Individual Electricity Distributors As of December 31st, 2007 (Alphabetically Listed)	West Nipissing Energy Services Ltd.	West Perth Power Inc.	Westario Power Inc.	Whitby Hydro Electric Corporation	Woodstock Hydro Services Inc.
FINANCIAL INFORMATION					
Balance Sheet					
Assets					
Current Assets	\$ 1,931,663	\$ 2,365,883	\$ 10,039,800	\$ 22,686,112	\$ 12,322,547
Property Plant & Equipment					
Gross Property Plant & Equipment	\$ 5,777,486	\$ 4,306,490	\$ 37,268,236	\$ 113,677,245	\$ 29,505,210
Accumulated Amortization	\$ (4,183,931)	\$ (2,629,006)	\$ (9,485,262)	\$ (55,189,438)	\$ (11,574,147)
Net Property Plant & Equipment	\$ 1,593,555	\$ 1,677,483	\$ 27,782,974	\$ 58,487,808	\$ 17,931,063
Regulatory Assets	\$ 155,387	\$ (87,807)	\$ 1,757,683	\$ (2,032,781)	\$ (528,896)
Other Non-Current Assets	\$ -	\$ -	\$ -	\$ -	\$ -
Total Assets	\$ 3,680,606	\$ 3,955,559	\$ 39,580,457	\$ 79,141,139	\$ 29,724,714
Liabilities					
Current Liabilities	\$ 827,755	\$ 895,182	\$ 14,842,587	\$ 10,541,453	\$ 4,835,679
Non-Current Liabilities excluding debt	\$ 13,329	\$ (7,777)	\$ 598,446	\$ 1,029,121	\$ (66,550)
Long Term Debt	\$ 2,462,533	\$ 1,183,391	\$ 5,260,461	\$ 28,337,942	\$ 10,941,862
Total Liabilities	3,303,617	2,070,796	20,701,494	39,908,516	15,710,991
Equity	\$ 376,989	\$ 1,884,763	\$ 18,878,963	\$ 39,232,623	\$ 14,013,722
Total Liabilities & Equity	\$ 3,680,606	\$ 3,955,559	\$ 39,580,457	\$ 79,141,139	\$ 29,724,714



Individual Electricity Distributors As of December 31st, 2007 (Alphabetically Listed)	Atikokan Hydro Inc.	Barrie Hydro Distribution Inc.	Bluewater Power Distribution Corporation	Brant County Power Inc.	Brantford Power Inc.	Burlington Hydro Inc.
FINANCIAL INFORMATION						
Income Statement						
Revenue						
Commodity & Distribution Revenue	\$ 3,643,930	\$ 141,356,802	\$ 88,279,306	\$ 25,745,079	\$ 91,672,113	\$ 154,387,815
Commodity Cost	\$ 2,747,428	\$ 112,788,540	\$ 72,009,498	\$ 19,514,507	\$ 75,647,012	\$ 125,505,112
Revenue from Distribution	\$ 896,502	\$ 28,568,262	\$ 16,269,809	\$ 6,230,572	\$ 16,025,101	\$ 28,882,703
Distribution Related Expenses						
Operation	\$ 288,171	\$ 2,228,002	\$ 2,287,705	\$ 636,856	\$ 943,969	\$ 3,607,258
Maintenance	\$ 72,430	\$ 1,823,524	\$ 122,553	\$ 654,655	\$ 1,740,481	\$ 2,664,758
Administration	\$ 398,554	\$ 4,531,411	\$ 6,667,537	\$ 307,478	\$ 5,273,644	\$ 6,411,809
Other Expenses	\$ -	\$ -	\$ -	\$ -	\$ -	\$ -
Amortization	\$ 158,598	\$ 9,030,960	\$ 3,847,902	\$ 1,006,228	\$ 2,775,296	\$ 6,128,220
Total Distribution Related Expenses	\$ 917,753	\$ 17,613,897	\$ 12,925,698	\$ 2,605,216	\$ 10,733,389	\$ 18,812,045
Other Income	\$ 59,633	\$ 480,708	\$ 1,375,748	\$ 161,618	\$ 759,576	\$ 1,495,723
Other Deductions	\$ -	\$ 31,288	\$ 29,348	\$ -	\$ 1,200	\$ 60,334
Earnings before Interest and Taxes	\$ 38,382	\$ 11,403,785	\$ 4,690,511	\$ 3,786,973	\$ 6,050,088	\$ 11,506,047
Interest Expense	\$ 17,602	\$ 3,266,678	\$ 1,460,010	\$ 405,418	\$ 2,149,931	\$ 3,569,323
Taxes	\$ 2,349	\$ 5,811,501	\$ 1,588,831	\$ 827,227	\$ 1,195,679	\$ 3,475,414
Earning before Unusual Items	\$ 18,432	\$ 2,325,606	\$ 1,641,671	\$ 2,554,328	\$ 2,704,478	\$ 4,461,310
Discontinued Operations Gains/(Losses)	\$ -	\$ -	\$ -	\$ -	\$ -	\$ -
Extraordinary & Other Gains/(Losses)	\$ -	\$ -	\$ -	\$ -	\$ -	\$ -
Net Income	\$ 18,432	\$ 2,325,606	\$ 1,641,671	\$ 2,554,328	\$ 2,704,478	\$ 4,461,310



Individual Electricity Distributors As of December 31st, 2007 (Alphabetically Listed)	COLLUS Power Corp.	Cambridge and North Dumfries Hydro Inc.	Canadian Niagara Power Inc.- Fort Erie	Centre Wellington Hydro Ltd.	Chapleau Public Utilities Corporation	Chatham-Kent Hydro Inc.
FINANCIAL INFORMATION						
Income Statement						
Revenue						
Commodity & Distribution Revenue	\$ 28,617,873	\$ 136,977,028	\$ 31,572,697	\$ 12,879,490	\$ 2,686,022	\$ 78,218,733
Commodity Cost	\$ 23,678,032	\$ 114,882,899	\$ 22,045,950	\$ 10,282,924	\$ 2,058,195	\$ 64,217,633
Revenue from Distribution	\$ 4,939,841	\$ 22,094,129	\$ 9,526,747	\$ 2,596,566	\$ 627,827	\$ 14,001,101
Distribution Related Expenses						
Operation	\$ 215,331	\$ 2,403,209	\$ 914,403	\$ 256,507	\$ 254,064	\$ 825,806
Maintenance	\$ 1,322,165	\$ 1,202,377	\$ 1,021,145	\$ 252,713	\$ -	\$ 904,736
Administration	\$ 1,748,301	\$ 5,138,817	\$ 2,919,214	\$ 993,330	\$ 382,702	\$ 3,548,670
Other Expenses	\$ -	\$ -	\$ -	\$ -	\$ -	\$ -
Amortization	\$ 782,359	\$ 5,521,640	\$ 2,472,127	\$ 511,313	\$ 36,361	\$ 3,315,639
Total Distribution Related Expenses	\$ 4,068,156	\$ 14,266,043	\$ 7,326,889	\$ 2,013,863	\$ 673,127	\$ 8,594,851
Other Income	\$ 290,373	\$ 1,172,027	\$ 232,932	\$ 359,806	\$ 42,509	\$ 407,718
Other Deductions	\$ -	\$ 12,899	\$ -	\$ 8,790	\$ -	\$ 200,000
Earnings before Interest and Taxes	\$ 1,162,058	\$ 8,987,214	\$ 2,432,789	\$ 933,720	\$ -2,790	\$ 5,613,967
Interest Expense	\$ 337,278	\$ 2,360,042	\$ 1,573,966	\$ 389,567	\$ 14,771	\$ 2,009,246
Taxes	\$ 268,293	\$ 2,816,523	\$ 369,208	\$ 483,262	\$ 7,578	\$ 1,572,951
Earning before Unusual Items	\$ 556,487	\$ 3,810,649	\$ 489,615	\$ 60,890	\$ -25,140	\$ 2,031,770
Discontinued Operations Gains/(Losses)	\$ -	\$ -	\$ -	\$ -	\$ -	\$ -
Extraordinary & Other Gains/(Losses)	\$ (413)	\$ -	\$ -	\$ -	\$ -	\$ -
Net Income	\$ 556,074	\$ 3,810,649	\$ 489,615	\$ 60,890	\$ (25,140)	\$ 2,031,770



Individual Electricity Distributors As of December 31st, 2007 (Alphabetically Listed)	Clinton Power Corporation	Cooperative Hydro Embrun Inc.	E.L.K. Energy Inc.	ENWIN Powerlines Ltd.	Eastern Ontario Power (CNP)	Enersource Hydro Mississauga Inc.
FINANCIAL INFORMATION						
Income Statement						
Revenue						
Commodity & Distribution Revenue	\$ 2,955,432	\$ 2,744,688	\$ 22,142,716	\$ 229,968,853	\$ 7,076,574	\$ 687,030,881
Commodity Cost	\$ 2,251,527	\$ 2,134,898	\$ 18,516,760	\$ 184,314,828	\$ 5,159,572	\$ 570,535,470
Revenue from Distribution	\$ 703,904	\$ 609,790	\$ 3,625,956	\$ 45,654,025	\$ 1,917,002	\$ 116,495,411
Distribution Related Expenses						
Operation	\$ 71,580	\$ 32,740	\$ 215,650	\$ 2,334,643	\$ 211,361	\$ 15,241,085
Maintenance	\$ 67,237	\$ 19,166	\$ 390,715	\$ 2,142,073	\$ 195,942	\$ 3,080,417
Administration	\$ 407,665	\$ 343,595	\$ 1,321,656	\$ 24,728,107	\$ 892,742	\$ 28,263,488
Other Expenses	\$ -	\$ -	\$ -	\$ -	\$ -	\$ -
Amortization	\$ 50,712	\$ 115,840	\$ 726,586	\$ 10,984,901	\$ 306,370	\$ 37,745,670
Total Distribution Related Expenses	\$ 597,193	\$ 511,342	\$ 2,654,606	\$ 40,189,724	\$ 1,606,415	\$ 84,330,660
Other Income	\$ 32,022	\$ 58,994	\$ 699,643	\$ 12,146,373	\$ 18,487	\$ 12,226,745
Other Deductions	\$ -	\$ 1,500	\$ -	\$ 18,172	\$ -	\$ -
Earnings before Interest and Taxes	\$ 138,733	\$ 155,941	\$ 1,670,994	\$ 17,592,502	\$ 329,075	\$ 44,391,496
Interest Expense	\$ 59,035	\$ 882	\$ 302,244	\$ 5,253,926	\$ 271,702	\$ 18,813,693
Taxes	\$ 580	\$ 39,414	\$ 631,237	\$ (3,398,138)	\$ 28,453	\$ 11,760,126
Earning before Unusual Items	\$ 79,119	\$ 115,646	\$ 737,513	\$ 15,736,714	\$ 28,920	\$ 13,817,677
Discontinued Operations Gains/(Losses)	\$ -	\$ -	\$ -	\$ -	\$ -	\$ -
Extraordinary & Other Gains/(Losses)	\$ -	\$ -	\$ -	\$ -	\$ -	\$ -
Net Income	\$ 79,119	\$ 115,646	\$ 737,513	\$ 15,736,714	\$ 28,920	\$ 13,817,677



Individual Electricity Distributors As of December 31st, 2007 (Alphabetically Listed)	Erie Thames Powerlines Corporation	Espanola Regional Hydro Distribution Corporation	Essex Powerlines Corporation	Festival Hydro Inc.	Fort Frances Power Corporation	Grand Valley Energy Inc.
FINANCIAL INFORMATION						
Income Statement						
Revenue						
Commodity & Distribution Revenue	\$ 36,253,074	\$ 6,002,137	\$ 54,696,078	\$ 54,197,496	\$ 7,593,493	\$ 963,889
Commodity Cost	\$ 28,804,903	\$ 4,665,275	\$ 44,577,742	\$ 44,549,337	\$ 6,159,730	\$ 725,993
Revenue from Distribution	\$ 7,448,171	\$ 1,336,862	\$ 10,118,336	\$ 9,648,158	\$ 1,433,762	\$ 237,895
Distribution Related Expenses						
Operation	\$ 39,242	\$ 276,584	\$ 849,690	\$ 399,334	\$ 167,586	\$ 19,958
Maintenance	\$ 1,465,814	\$ 129,969	\$ 1,909,952	\$ 958,255	\$ 94,195	\$ 14,134
Administration	\$ 3,502,753	\$ 572,576	\$ 2,998,729	\$ 2,178,177	\$ 884,233	\$ 198,049
Other Expenses	\$ -	\$ -	\$ -	\$ -	\$ -	\$ -
Amortization	\$ 884,677	\$ 187,822	\$ 1,660,716	\$ 2,244,835	\$ 391,605	\$ 42,798
Total Distribution Related Expenses	\$ 5,892,486	\$ 1,166,951	\$ 7,419,086	\$ 5,780,601	\$ 1,537,619	\$ 274,938
Other Income	\$ 455,776	\$ 107,334	\$ 233,023	\$ 384,926	\$ 163,286	\$ 18,027
Other Deductions	\$ -	\$ -	\$ -	\$ 50,735	\$ -	\$ -
Earnings before Interest and Taxes	\$ 2,011,461	\$ 277,245	\$ 2,932,273	\$ 4,201,748	\$ 59,429	-\$ 19,016
Interest Expense	\$ 602,703	\$ 229,722	\$ 666,961	\$ 1,182,785	\$ 1,200	\$ 1,075
Taxes	\$ 392,994	\$ 16,705	\$ 971,212	\$ 1,482,805	\$ 2,205	\$ -
Earning before Unusual Items	\$ 1,015,764	\$ 30,817	\$ 1,294,099	\$ 1,536,157	\$ 56,024	-\$ 20,091
Discontinued Operations Gains/(Losses)	\$ -	\$ -	\$ -	\$ -	\$ -	\$ -
Extraordinary & Other Gains/(Losses)	\$ (255,325)	\$ -	\$ -	\$ -	\$ -	\$ -
Net Income	\$ 760,439	\$ 30,817	\$ 1,294,099	\$ 1,536,157	\$ 56,024	\$ (20,091)



Individual Electricity Distributors As of December 31st, 2007 (Alphabetically Listed)	Great Lakes Power Limited	Greater Sudbury Hydro Inc.	Grimsby Power Incorporated	Guelph Hydro Electric Systems Inc.	Haldimand County Hydro Inc.	Halton Hills Hydro Inc.
FINANCIAL INFORMATION						
Income Statement						
Revenue						
Commodity & Distribution Revenue	\$ 27,721,859	\$ 88,567,433	\$ 16,957,657	\$ 134,656,514	\$ 40,843,162	\$ 46,435,183
Commodity Cost	\$ 14,539,989	\$ 67,437,170	\$ 13,500,381	\$ 110,022,775	\$ 28,516,479	\$ 37,571,310
Revenue from Distribution	\$ 13,181,870	\$ 21,130,262	\$ 3,457,276	\$ 24,633,739	\$ 12,326,683	\$ 8,863,873
Distribution Related Expenses						
Operation	\$ 1,497,161	\$ 2,928,132	\$ 187,091	\$ 1,148,856	\$ 1,193,191	\$ 497,986
Maintenance	\$ 3,368,649	\$ 1,662,508	\$ 271,420	\$ 1,441,501	\$ 2,856,419	\$ 621,461
Administration	\$ 3,156,508	\$ 10,892,303	\$ 1,227,533	\$ 8,133,222	\$ 3,060,212	\$ 3,137,273
Other Expenses	\$ -	\$ -	\$ -	\$ -	\$ -	\$ -
Amortization	\$ 3,559,152	\$ 4,259,869	\$ 807,571	\$ 5,693,148	\$ 2,162,367	\$ 2,149,955
Total Distribution Related Expenses	\$ 11,581,470	\$ 19,742,811	\$ 2,493,615	\$ 16,416,726	\$ 9,272,189	\$ 6,406,675
Other Income	\$ (29,325)	\$ 1,371,471	\$ 194,185	\$ 1,351,744	\$ 562,517	\$ 766,904
Other Deductions	\$ 20,499	\$ -	\$ -	\$ 39,850	\$ -	\$ 6,139
Earnings before Interest and Taxes	\$ 1,550,575	\$ 2,758,922	\$ 1,157,845	\$ 9,528,907	\$ 3,617,011	\$ 3,217,963
Interest Expense	\$ 1,256,935	\$ 4,397,365	\$ 486,596	\$ 2,838,170	\$ 878,326	\$ 1,452,646
Taxes	\$ 312,036	\$ 631,809	\$ 274,842	\$ 4,270,764	\$ 1,009,351	\$ 704,803
Earning before Unusual Items	-\$ 18,396	-\$ 2,270,252	\$ 396,408	\$ 2,419,973	\$ 1,729,334	\$ 1,060,514
Discontinued Operations Gains/(Losses)	\$ -	\$ -	\$ -	\$ -	\$ -	\$ -
Extraordinary & Other Gains/(Losses)	\$ -	\$ -	\$ -	\$ -	\$ -	\$ -
Net Income	\$ (18,396)	\$ (2,270,252)	\$ 396,408	\$ 2,419,973	\$ 1,729,334	\$ 1,060,514



Individual Electricity Distributors As of December 31st, 2007 (Alphabetically Listed)	Hearst Power Distribution Company Limited	Horizon Utilities Corporation	Hydro 2000 Inc.	Hydro Hawkesbury Inc.	Hydro One Brampton Networks Inc.	Hydro One Networks Inc.
FINANCIAL INFORMATION						
<u>Income Statement</u>						
<u>Revenue</u>						
Commodity & Distribution Revenue	\$ 8,202,261	\$ 482,886,449	\$ 2,327,687	\$ 15,457,668	\$ 340,282,900	\$ 2,986,486,400
Commodity Cost	\$ 7,757,123	\$ 394,335,691	\$ 2,069,093	\$ 14,304,462	\$ 275,962,518	\$ 1,963,951,600
Revenue from Distribution	\$ 445,138	\$ 88,550,758	\$ 258,593	\$ 1,153,206	\$ 64,320,381	\$ 1,022,534,800
Distribution Related Expenses						
Operation	\$ 74,685	\$ 7,420,404	\$ 1,903	\$ 54,765	\$ 3,144,683	\$ 74,019,300
Maintenance	\$ 210,900	\$ 5,158,472	\$ 13,365	\$ 175,050	\$ 3,091,210	\$ 209,266,900
Administration	\$ 379,897	\$ 24,425,794	\$ 217,311	\$ 539,182	\$ 9,755,444	\$ 198,127,800
Other Expenses	\$ -	\$ -	\$ -	\$ -	\$ -	\$ -
Amortization	\$ 98,940	\$ 20,949,999	\$ 46,041	\$ 164,126	\$ 15,598,345	\$ 255,151,400
Total Distribution Related Expenses	\$ 764,423	\$ 57,954,669	\$ 278,620	\$ 933,124	\$ 31,589,682	\$ 736,565,400
Other Income	\$ 214,312	\$ 2,134,529	\$ 26,986	\$ 173,576	\$ 610,532	\$ 15,162,400
Other Deductions	\$ -	\$ -	\$ -	\$ -	\$ -	\$ -
Earnings before Interest and Taxes	-\$ 104,973	\$ 32,730,618	\$ 6,959	\$ 393,658	\$ 33,341,232	\$ 301,131,800
Interest Expense	\$ 70,397	\$ 9,371,790	\$ 19,651	\$ 119,755	\$ 10,403,992	\$ 120,083,200
Taxes	\$ (29,259)	\$ 9,217,076	\$ (10,211)	\$ 120,005	\$ 12,515,172	\$ 92,950,900
Earning before Unusual Items	-\$ 146,112	\$ 14,141,752	-\$ 2,480	\$ 153,899	\$ 10,422,068	\$ 88,097,700
Discontinued Operations Gains/(Losses)	\$ -	\$ -	\$ -	\$ -	\$ -	\$ -
Extraordinary & Other Gains/(Losses)	\$ -	\$ -	\$ -	\$ -	\$ -	\$ -
Net Income	\$ (146,112)	\$ 14,141,752	\$ (2,480)	\$ 153,899	\$ 10,422,068	\$ 88,097,700



Individual Electricity Distributors As of December 31st, 2007 (Alphabetically Listed)	Hydro Ottawa Limited	Innisfil Hydro Distribution Systems Limited	Kenora Hydro Electric Corporation Ltd.	Kingston Electricity Distribution Limited	Kitchener-Wilmot Hydro Inc.	Lakefront Utilities Inc.
FINANCIAL INFORMATION						
<u>Income Statement</u>						
<u>Revenue</u>						
Commodity & Distribution Revenue	\$ 676,460,956	\$ 23,494,584	\$ 9,939,879	\$ 61,083,568	\$ 176,415,136	\$ 23,906,008
Commodity Cost	\$ 548,081,401	\$ 16,686,544	\$ 7,815,133	\$ 50,567,631	\$ 142,288,135	\$ 20,345,694
Revenue from Distribution	\$ 128,379,555	\$ 6,808,040	\$ 2,124,746	\$ 10,515,937	\$ 34,127,001	\$ 3,560,315
Distribution Related Expenses						
Operation	\$ 14,394,895	\$ 639,277	\$ 132,133	\$ 969,975	\$ 2,733,252	\$ 521,698
Maintenance	\$ 4,847,147	\$ 489,578	\$ 245,439	\$ 991,615	\$ 3,605,546	\$ 111,104
Administration	\$ 23,765,034	\$ 2,044,485	\$ 1,009,618	\$ 2,834,209	\$ 6,087,904	\$ 1,279,963
Other Expenses	\$ -	\$ -	\$ -	\$ -	\$ -	\$ -
Amortization	\$ 37,552,040	\$ 1,666,910	\$ 394,997	\$ 1,794,747	\$ 8,901,061	\$ 828,412
Total Distribution Related Expenses	\$ 80,559,117	\$ 4,840,249	\$ 1,782,188	\$ 6,590,547	\$ 21,327,763	\$ 2,741,177
Other Income	\$ 3,535,041	\$ 168,775	\$ 169,313	\$ 268,894	\$ 1,737,080	\$ 452,048
Other Deductions	\$ 90,803	\$ 1,335	\$ -	\$ -	\$ 110,760	\$ -
Earnings before Interest and Taxes	\$ 51,264,676	\$ 2,135,230	\$ 511,871	\$ 4,194,284	\$ 14,425,558	\$ 1,271,185
Interest Expense	\$ 15,430,829	\$ 786,849	\$ 219,399	\$ 779,813	\$ 4,957,610	\$ 599,524
Taxes	\$ 16,516,382	\$ 392,842	\$ 17,050	\$ 1,748,743	\$ 3,861,430	\$ 318,598
Earning before Unusual Items	\$ 19,317,464	\$ 955,539	\$ 275,422	\$ 1,665,728	\$ 5,606,518	\$ 353,063
Discontinued Operations Gains/(Losses)	\$ -	\$ -	\$ -	\$ -	\$ -	\$ -
Extraordinary & Other Gains/(Losses)	\$ (678,692)	\$ -	\$ -	\$ -	\$ -	\$ -
Net Income	\$ 18,638,772	\$ 955,539	\$ 275,422	\$ 1,665,728	\$ 5,606,518	\$ 353,063



Individual Electricity Distributors As of December 31st, 2007 (Alphabetically Listed)	Lakeland Power Distribution Ltd.	London Hydro Inc.	Middlesex Power Distribution Corporation	Midland Power Utility Corporation	Milton Hydro Distribution Inc.	Newbury Power Inc.
FINANCIAL INFORMATION						
<u>Income Statement</u>						
<u>Revenue</u>						
Commodity & Distribution Revenue	\$ 20,354,216	\$ 303,583,885	\$ 18,338,993	\$ 19,816,755	\$ 60,146,942	\$ 404,171
Commodity Cost	\$ 16,206,187	\$ 248,813,404	\$ 15,194,627	\$ 16,823,128	\$ 49,302,014	\$ 317,236
Revenue from Distribution	\$ 4,148,029	\$ 54,770,480	\$ 3,144,366	\$ 2,993,627	\$ 10,844,927	\$ 86,935
Distribution Related Expenses						
Operation	\$ 197,461	\$ 6,465,055	\$ 112,143	\$ 352,987	\$ 527,987	\$ -
Maintenance	\$ 383,044	\$ 5,779,162	\$ 260,348	\$ 283,582	\$ 908,815	\$ 12,504
Administration	\$ 1,476,032	\$ 13,092,342	\$ 1,075,541	\$ 1,108,093	\$ 3,045,464	\$ 47,027
Other Expenses	\$ -	\$ -	\$ -	\$ -	\$ -	\$ -
Amortization	\$ 862,749	\$ 14,075,541	\$ 544,056	\$ 523,913	\$ 2,714,355	\$ 11,440
Total Distribution Related Expenses	\$ 2,919,286	\$ 39,412,101	\$ 1,992,088	\$ 2,268,575	\$ 7,196,621	\$ 70,971
Other Income	\$ 154,898	\$ 1,354,995	\$ 56,069	\$ 169,984	\$ 690,816	\$ -
Other Deductions	\$ -	\$ 50,203	\$ 25,000	\$ -	\$ -	\$ -
Earnings before Interest and Taxes	\$ 1,383,641	\$ 16,663,172	\$ 1,183,347	\$ 895,035	\$ 4,339,123	\$ 15,964
Interest Expense	\$ 183,507	\$ 4,497,790	\$ 342,416	\$ 31,762	\$ 1,184,752	\$ 5,625
Taxes	\$ 502,945	\$ 5,334,000	\$ 487,037	\$ 618,306	\$ 1,284,190	\$ -
Earning before Unusual Items	\$ 697,189	\$ 6,831,383	\$ 353,893	\$ 244,968	\$ 1,870,181	\$ 10,339
Discontinued Operations Gains/(Losses)	\$ -	\$ -	\$ -	\$ -	\$ -	\$ -
Extraordinary & Other Gains/(Losses)	\$ -	\$ -	\$ -	\$ -	\$ -	\$ -
Net Income	\$ 697,189	\$ 6,831,383	\$ 353,893	\$ 244,968	\$ 1,870,181	\$ 10,339



Individual Electricity Distributors As of December 31st, 2007 (Alphabetically Listed)	Newmarket - Tay Power Distribution Ltd.	Niagara Falls Hydro Inc.	Niagara-on-the- Lake Hydro Inc.	Norfolk Power Distribution Inc.	North Bay Hydro Distribution Limited	Northern Ontario Wires Inc.
FINANCIAL INFORMATION						
Income Statement						
Revenue						
Commodity & Distribution Revenue	\$ 70,551,018	\$ 85,825,371	\$ 17,861,165	\$ 37,587,791	\$ 49,019,330	\$ 12,388,344
Commodity Cost	\$ 54,691,739	\$ 66,584,549	\$ 13,081,768	\$ 27,907,475	\$ 38,464,108	\$ 9,985,052
Revenue from Distribution	\$ 15,859,279	\$ 19,240,821	\$ 4,779,397	\$ 9,680,317	\$ 10,555,222	\$ 2,403,292
Distribution Related Expenses						
Operation	\$ 798,647	\$ 2,199,744	\$ 342,844	\$ 1,262,270	\$ 961,269	\$ 330,293
Maintenance	\$ 1,038,578	\$ 1,752,435	\$ 431,315	\$ 943,238	\$ 565,430	\$ 170,919
Administration	\$ 3,696,043	\$ 4,713,245	\$ 944,345	\$ 2,493,269	\$ 4,036,323	\$ 1,333,925
Other Expenses	\$ -	\$ -	\$ -	\$ -	\$ -	\$ -
Amortization	\$ 3,677,283	\$ 4,254,829	\$ 1,241,397	\$ 2,257,886	\$ 2,315,186	\$ 299,135
Total Distribution Related Expenses	\$ 9,210,551	\$ 12,920,254	\$ 2,959,901	\$ 6,956,662	\$ 7,878,207	\$ 2,134,272
Other Income	\$ 819,509	\$ 396,953	\$ 116,475	\$ 218,174	\$ 995,953	\$ 89,854
Other Deductions	\$ -	\$ -	\$ 250	\$ 5,542	\$ 6,000	\$ 1,500
Earnings before Interest and Taxes	\$ 7,468,237	\$ 6,717,520	\$ 1,935,721	\$ 2,936,286	\$ 3,666,967	\$ 357,374
Interest Expense	\$ 1,634,974	\$ 2,299,891	\$ 759,213	\$ 1,220,014	\$ 1,019,729	\$ 138,035
Taxes	\$ 2,234,145	\$ 2,083,332	\$ 270,585	\$ 513,547	\$ 1,291,137	\$ 43,520
Earning before Unusual Items	\$ 3,599,118	\$ 2,334,298	\$ 905,923	\$ 1,202,725	\$ 1,356,101	\$ 175,819
Discontinued Operations Gains/(Losses)	\$ -	\$ -	\$ -	\$ -	\$ -	\$ -
Extraordinary & Other Gains/(Losses)	\$ -	\$ -	\$ -	\$ -	\$ -	\$ -
Net Income	\$ 3,599,118	\$ 2,334,298	\$ 905,923	\$ 1,202,725	\$ 1,356,101	\$ 175,819



Individual Electricity Distributors As of December 31st, 2007 (Alphabetically Listed)	Oakville Hydro Electricity Distribution Inc.	Orangeville Hydro Limited	Orillia Power Distribution Corporation	Oshawa PUC Networks Inc.	Ottawa River Power Corporation	PUC Distribution Inc.
FINANCIAL INFORMATION						
Income Statement						
Revenue						
Commodity & Distribution Revenue	\$ 149,516,984	\$ 22,363,076	\$ 30,114,623	\$ 98,989,354	\$ 18,546,569	\$ 58,234,387
Commodity Cost	\$ 117,336,723	\$ 18,006,331	\$ 23,623,937	\$ 79,191,105	\$ 14,954,963	\$ 45,469,702
Revenue from Distribution	\$ 32,180,261	\$ 4,356,746	\$ 6,490,686	\$ 19,798,249	\$ 3,591,605	\$ 12,764,685
Distribution Related Expenses						
Operation	\$ 3,496,787	\$ 251,187	\$ 669,080	\$ 108,590	\$ 313,818	\$ 2,191,484
Maintenance	\$ 1,519,955	\$ 431,346	\$ 727,797	\$ 1,068,244	\$ 501,851	\$ 1,466,411
Administration	\$ 5,443,873	\$ 1,390,461	\$ 2,124,036	\$ 7,710,815	\$ 1,498,581	\$ 3,989,352
Other Expenses	\$ -	\$ -	\$ -	\$ -	\$ -	\$ -
Amortization	\$ 8,402,591	\$ 929,960	\$ 1,320,173	\$ 3,907,682	\$ 693,825	\$ 2,873,964
Total Distribution Related Expenses	\$ 18,863,206	\$ 3,002,954	\$ 4,841,087	\$ 12,795,330	\$ 3,008,075	\$ 10,521,211
Other Income	\$ 401,627	\$ 312,775	\$ 218,511	\$ 1,257,272	\$ 227,723	\$ 550,295
Other Deductions	\$ -	\$ 5,488	\$ 25,624	\$ (66,571)	\$ -	\$ -
Earnings before Interest and Taxes	\$ 13,718,683	\$ 1,661,078	\$ 1,842,486	\$ 8,326,762	\$ 811,254	\$ 2,793,769
Interest Expense	\$ 5,210,561	\$ 489,483	\$ 654,795	\$ 1,967,073	\$ 404,973	\$ 2,954,407
Taxes	\$ 6,403,341	\$ 524,430	\$ 545,096	\$ 2,588,664	\$ 98,220	\$ 540,714
Earning before Unusual Items	\$ 2,104,780	\$ 647,166	\$ 642,595	\$ 3,771,025	\$ 308,060	-\$ 701,352
Discontinued Operations Gains/(Losses)	\$ -	\$ -	\$ -	\$ -	\$ -	\$ -
Extraordinary & Other Gains/(Losses)	\$ -	\$ -	\$ -	\$ -	\$ -	\$ -
Net Income	\$ 2,104,780	\$ 647,166	\$ 642,595	\$ 3,771,025	\$ 308,060	\$ (701,352)



Individual Electricity Distributors As of December 31st, 2007 (Alphabetically Listed)	Parry Sound Power Corporation	Peninsula West Utilities Limited	Peterborough Distribution Incorporated	Port Colborne (CNP)	PowerStream Inc.	Renfrew Hydro Inc.
FINANCIAL INFORMATION						
Income Statement						
Revenue						
Commodity & Distribution Revenue	\$ 8,481,776	\$ 34,870,901	\$ 76,552,555	\$ 19,457,464	\$ 608,856,870	\$ 9,105,369
Commodity Cost	\$ 6,606,776	\$ 26,400,573	\$ 63,112,351	\$ 14,598,312	\$ 489,776,902	\$ 7,468,683
Revenue from Distribution	\$ 1,875,000	\$ 8,470,328	\$ 13,440,204	\$ 4,859,152	\$ 119,079,968	\$ 1,636,686
Distribution Related Expenses						
Operation	\$ 63,190	\$ 1,518,415	\$ 910,111	\$ 514,172	\$ 8,860,483	\$ 228,485
Maintenance	\$ 266,047	\$ 479,515	\$ 2,249,757	\$ 453,526	\$ 6,825,060	\$ 111,560
Administration	\$ 780,072	\$ 2,532,353	\$ 3,394,279	\$ 3,435,561	\$ 27,168,227	\$ 654,966
Other Expenses	\$ -	\$ -	\$ -	\$ -	\$ -	\$ -
Amortization	\$ 381,233	\$ 2,641,905	\$ 3,149,121	\$ 296,408	\$ 29,666,150	\$ -
Total Distribution Related Expenses	\$ 1,490,542	\$ 7,172,187	\$ 9,703,268	\$ 4,699,667	\$ 72,519,919	\$ 995,011
Other Income	\$ 180,758	\$ 172,489	\$ 331,898	\$ 22,736	\$ 10,045,632	\$ 109,972
Other Deductions	\$ 100	\$ 1,720	\$ -	\$ -	\$ 1,043,386	\$ -
Earnings before Interest and Taxes	\$ 565,116	\$ 1,468,910	\$ 4,068,833	\$ 182,221	\$ 55,562,296	\$ 751,647
Interest Expense	\$ 190,604	\$ 521,522	\$ 1,514,411	\$ 346,502	\$ 18,264,524	\$ 577,591
Taxes	\$ 138,155	\$ 935,770	\$ 1,489,741	\$ 4,015	\$ 16,148,724	\$ 48,358
Earning before Unusual Items	\$ 236,357	\$ 11,619	\$ 1,064,681	\$ -168,296	\$ 21,149,047	\$ 125,697
Discontinued Operations Gains/(Losses)	\$ -	\$ -	\$ -	\$ -	\$ -	\$ -
Extraordinary & Other Gains/(Losses)	\$ -	\$ -	\$ 355,155	\$ -	\$ -	\$ -
Net Income	\$ 236,357	\$ 11,619	\$ 1,419,836	\$ (168,296)	\$ 21,149,047	\$ 125,697



Individual Electricity Distributors As of December 31st, 2007 (Alphabetically Listed)	Rideau St. Lawrence Distribution Inc.	Sioux Lookout Hydro Inc.	St. Thomas Energy Inc.	Thunder Bay Hydro Electricity Distribution Inc.	Tillsonburg Hydro Inc.	Toronto Hydro- Electric System Limited
FINANCIAL INFORMATION						
<u>Income Statement</u>						
<u>Revenue</u>						
Commodity & Distribution Revenue	\$ 10,862,916	\$ 7,977,897	\$ 33,297,547	\$ 88,596,580	\$ 19,582,993	\$ 2,306,971,402
Commodity Cost	\$ 9,015,794	\$ 6,425,837	\$ 26,399,909	\$ 71,336,950	\$ 16,970,098	\$ 1,841,121,199
Revenue from Distribution	\$ 1,847,122	\$ 1,552,060	\$ 6,897,638	\$ 17,259,630	\$ 2,612,896	\$ 465,850,202
Distribution Related Expenses						
Operation	\$ 149,076	\$ 363,205	\$ 396,963	\$ 3,103,693	\$ 616,632	\$ 54,336,172
Maintenance	\$ 231,232	\$ 65,969	\$ 365,504	\$ 2,958,107	\$ 179,508	\$ 42,564,557
Administration	\$ 996,706	\$ 713,284	\$ 2,783,533	\$ 5,995,690	\$ 824,130	\$ 59,895,469
Other Expenses	\$ -	\$ -	\$ -	\$ -	\$ -	\$ -
Amortization	\$ 200,257	\$ 241,209	\$ 1,230,004	\$ 4,567,108	\$ 440,419	\$ 137,019,981
Total Distribution Related Expenses	\$ 1,577,271	\$ 1,383,667	\$ 4,776,005	\$ 16,624,598	\$ 2,060,689	\$ 293,816,178
Other Income	\$ 76,606	\$ 53,233	\$ (3,770)	\$ 790,300	\$ 41,003	\$ 18,941,897
Other Deductions	\$ 592	\$ -	\$ -	\$ -	\$ -	\$ -
Earnings before Interest and Taxes	\$ 345,865	\$ 221,625	\$ 2,117,863	\$ 1,425,332	\$ 593,210	\$ 190,975,922
Interest Expense	\$ 95,335	\$ 142,283	\$ 650,978	\$ 308,338	\$ 19,023	\$ 72,128,745
Taxes	\$ 61,268	\$ 28,541	\$ 758,698	\$ 828,000	\$ 187,056	\$ 53,225,941
Earning before Unusual Items	\$ 189,262	\$ 50,801	\$ 708,187	\$ 288,994	\$ 387,130	\$ 65,621,236
Discontinued Operations Gains/(Losses)	\$ -	\$ -	\$ -	\$ -	\$ -	\$ -
Extraordinary & Other Gains/(Losses)	\$ -	\$ -	\$ -	\$ -	\$ -	\$ -
Net Income	\$ 189,262	\$ 50,801	\$ 708,187	\$ 288,994	\$ 387,130	\$ 65,621,236



Individual Electricity Distributors As of December 31st, 2007 (Alphabetically Listed)	Veridian Connections Inc.	Wasaga Distribution Inc.	Waterloo North Hydro Inc.	Welland Hydro- Electric System Corp.	Wellington North Power Inc.	West Coast Huron Energy Inc.
FINANCIAL INFORMATION						
Income Statement						
Revenue						
Commodity & Distribution Revenue	\$ 238,104,543	\$ 11,692,689	\$ 119,394,624	\$ 42,821,499	\$ 7,407,514	\$ 8,227,875
Commodity Cost	\$ 191,960,210	\$ 8,192,852	\$ 93,826,037	\$ 35,156,442	\$ 6,033,413	\$ 6,560,539
Revenue from Distribution	\$ 46,144,333	\$ 3,499,838	\$ 25,568,587	\$ 7,665,057	\$ 1,374,102	\$ 1,667,336
Distribution Related Expenses						
Operation	\$ 3,491,598	\$ -	\$ 3,380,262	\$ 1,213,581	\$ 239,389	\$ 196,400
Maintenance	\$ 1,730,609	\$ 384,411	\$ 1,523,299	\$ 926,058	\$ 146,165	\$ 43,196
Administration	\$ 12,564,608	\$ 1,390,663	\$ 3,790,047	\$ 2,370,672	\$ 611,356	\$ 964,000
Other Expenses	\$ -	\$ -	\$ -	\$ -	\$ -	\$ -
Amortization	\$ 10,556,897	\$ 644,960	\$ 5,998,961	\$ 1,634,332	\$ 281,389	\$ 215,250
Total Distribution Related Expenses	\$ 28,343,712	\$ 2,420,034	\$ 14,692,569	\$ 6,144,643	\$ 1,278,298	\$ 1,418,846
Other Income	\$ 1,992,966	\$ 37,739	\$ 912,726	\$ 495,574	\$ 33,593	\$ 105,111
Other Deductions	\$ 185,913	\$ -	\$ 121	\$ 6,437	\$ -	\$ -
Earnings before Interest and Taxes	\$ 19,607,674	\$ 1,117,542	\$ 11,788,623	\$ 2,009,552	\$ 129,396	\$ 353,601
Interest Expense	\$ 5,224,695	\$ 224,580	\$ 3,733,097	\$ 897,122	\$ 134,652	\$ 86,543
Taxes	\$ 5,399,644	\$ 420,128	\$ 3,327,778	\$ 743,071	\$ 2,431	\$ 31,050
Earning before Unusual Items	\$ 8,983,335	\$ 472,834	\$ 4,727,747	\$ 369,359	-\$ 7,687	\$ 236,008
Discontinued Operations Gains/(Losses)	\$ -	\$ -	\$ -	\$ -	\$ -	\$ -
Extraordinary & Other Gains/(Losses)	\$ -	\$ -	\$ -	\$ (271,632)	\$ -	\$ -
Net Income	\$ 8,983,335	\$ 472,834	\$ 4,727,747	\$ 97,726	\$ (7,687)	\$ 236,008



Individual Electricity Distributors As of December 31st, 2007 (Alphabetically Listed)	West Nipissing Energy Services Ltd.	West Perth Power Inc.	Westario Power Inc.	Whitby Hydro Electric Corporation	Woodstock Hydro Services Inc.
FINANCIAL INFORMATION					
<u>Income Statement</u>					
<u>Revenue</u>					
Commodity & Distribution Revenue	\$ 5,465,240	\$ 5,772,542	\$ 40,337,155	\$ 86,613,912	\$ 35,285,939
Commodity Cost	\$ 4,558,899	\$ 4,957,834	\$ 31,693,322	\$ 67,866,124	\$ 28,017,413
Revenue from Distribution	\$ 906,341	\$ 814,708	\$ 8,643,833	\$ 18,747,788	\$ 7,268,526
Distribution Related Expenses					
Operation	\$ 128,013	\$ 155,933	\$ 319,525	\$ 1,911,338	\$ 685,178
Maintenance	\$ 64,427	\$ 199,234	\$ 535,748	\$ 1,861,044	\$ 472,477
Administration	\$ 322,879	\$ 177,870	\$ 3,679,466	\$ 4,957,986	\$ 2,112,018
Other Expenses	\$ -	\$ -	\$ -	\$ -	\$ -
Amortization	\$ 143,412	\$ 195,751	\$ 1,562,492	\$ 4,128,556	\$ 1,673,186
Total Distribution Related Expenses	\$ 658,730	\$ 728,787	\$ 6,097,231	\$ 12,858,924	\$ 4,942,859
Other Income	\$ 39,659	\$ 62,863	\$ 305,268	\$ 406,131	\$ 222,642
Other Deductions	\$ -	\$ -	\$ 11,580	\$ -	\$ 500
Earnings before Interest and Taxes	\$ 287,269	\$ 148,784	\$ 2,840,290	\$ 6,294,995	\$ 2,547,809
Interest Expense	\$ 14,571	\$ 90,612	\$ 1,225,775	\$ 2,103,610	\$ 804,987
Taxes	\$ 19,796	\$ 2,202	\$ 659,449	\$ 3,268,636	\$ 697,301
Earning before Unusual Items	\$ 252,902	\$ 55,971	\$ 955,066	\$ 922,750	\$ 1,045,520
Discontinued Operations Gains/(Losses)	\$ -	\$ -	\$ -	\$ -	\$ -
Extraordinary & Other Gains/(Losses)	\$ -	\$ -	\$ -	\$ -	\$ -
Net Income	\$ 252,902	\$ 55,971	\$ 955,066	\$ 922,750	\$ 1,045,520



Individual Electricity Distributors As of December 31st, 2007 (Alphabetically Listed)	Atikokan Hydro Inc.	Barrie Hydro Distribution Inc.	Bluewater Power Distribution Corporation	Brant County Power Inc.	Brantford Power Inc.	Burlington Hydro Inc.
<u>Financial Ratios</u>						
Liquidity Ratios						
Current Ratio (Current Assets/Current Liabilities)	2.57	0.88	1.97	2.13	1.60	2.19
Leverage Ratios						
Debt Ratio (Long Term Debt/Total Assets)	53%	25%	33%	24%	41%	36%
Debt to Equity Ratio (Long Term Debt/Total Equity)	1.55	0.54	0.88	0.41	1.08	0.82
Interest Coverage (EBIT/Interst Charges)	2.18	3.49	3.21	9.34	2.81	3.22
Profitability Ratios						
Financial Statement Return on Assets (Net Income/Total Assets)	0.70%	1.27%	2.82%	10.22%	3.37%	3.36%
Financial Statement Return on Equity (Net Income/Total Equity)	2.04%	2.79%	7.46%	17.24%	8.88%	7.62%



Individual Electricity Distributors As of December 31st, 2007 (Alphabetically Listed)	COLLUS Power Corp.	Cambridge and North Dumfries Hydro Inc.	Canadian Niagara Power Inc.- Fort Erie	Centre Wellington Hydro Ltd.	Chapleau Public Utilities Corporation	Chatham-Kent Hydro Inc.
<u>Financial Ratios</u>						
Liquidity Ratios						
Current Ratio (Current Assets/Current Liabilities)	1.62	2.62	0.69	3.78	4.64	1.48
Leverage Ratios						
Debt Ratio (Long Term Debt/Total Assets)	14%	32%	27%	32%	58%	36%
Debt to Equity Ratio (Long Term Debt/Total Equity)	0.29	0.67	1.10	0.66	3.18	0.91
Interest Coverage (EBIT/Interst Charges)	3.45	3.81	1.55	2.40	-0.19	2.79
Profitability Ratios						
Financial Statement Return on Assets (Net Income/Total Assets)	2.69%	3.18%	0.96%	0.39%	-1.29%	3.13%
Financial Statement Return on Equity (Net Income/Total Equity)	5.76%	6.72%	3.86%	0.80%	-7.12%	7.87%



Individual Electricity Distributors As of December 31st, 2007 (Alphabetically Listed)	Clinton Power Corporation	Cooperative Hydro Embrun Inc.	E.L.K. Energy Inc.	ENWIN Powerlines Ltd.	Eastern Ontario Power Inc. (CNP)
Financial Ratios					
Liquidity Ratios					
Current Ratio (Current Assets/Current Liabilities)	1.18	3.03	4.20	0.77	0.19
Leverage Ratios					
Debt Ratio (Long Term Debt/Total Assets)	0%	70%	18%	23%	18%
Debt to Equity Ratio (Long Term Debt/Total Equity)	0.00	6.11	0.29	0.65	0.62
Interest Coverage (EBIT/Interst Charges)	2.35	176.87	5.53	3.35	1.21
Profitability Ratios					
Financial Statement Return on Assets (Net Income/Total Assets)	2.86%	2.81%	3.39%	6.94%	0.24%
Financial Statement Return on Equity (Net Income/Total Equity)	8.61%	24.70%	5.43%	19.20%	0.85%



Individual Electricity Distributors As of December 31st, 2007 (Alphabetically Listed)	Enersource Hydro Mississauga Inc.	Erie Thames Powerlines Corporation	Espanola Regional Hydro Distribution Corporation	Essex Powerlines Corporation	Festival Hydro Inc.	Fort Frances Power Corporation
<u>Financial Ratios</u>						
Liquidity Ratios						
Current Ratio (Current Assets/Current Liabilities)	2.12	0.85	1.46	0.80	0.59	4.82
Leverage Ratios						
Debt Ratio (Long Term Debt/Total Assets)	50%	32%	70%	16%	0%	0%
Debt to Equity Ratio (Long Term Debt/Total Equity)	1.54	1.06	-	0.35	0.00	0.00
Interest Coverage (EBIT/Interst Charges)	2.36	3.34	1.21	4.40	3.55	49.53
Profitability Ratios						
Financial Statement Return on Assets (Net Income/Total Assets)	2.39%	2.88%	0.60%	3.38%	3.66%	0.82%
Financial Statement Return on Equity (Net Income/Total Equity)	7.33%	9.43%	-	7.56%	7.78%	0.96%



Individual Electricity Distributors As of December 31st, 2007 (Alphabetically Listed)	Grand Valley Energy Inc.	Great Lakes Power Limited	Greater Sudbury Hydro Inc.	Grimsby Power Incorporated	Guelph Hydro Electric Systems Inc.	Haldimand County Hydro Inc.
Financial Ratios						
Liquidity Ratios						
Current Ratio (Current Assets/Current Liabilities)	2.17	0.13	0.56	2.28	1.53	2.25
Leverage Ratios						
Debt Ratio (Long Term Debt/Total Assets)	0%	0%	0%	34%	29%	26%
Debt to Equity Ratio (Long Term Debt/Total Equity)	0.00	0.00	0.00	0.67	0.56	0.44
Interest Coverage (EBIT/Interst Charges)	-17.69	1.23	0.63	2.38	3.36	4.12
Profitability Ratios						
Financial Statement Return on Assets (Net Income/Total Assets)	-2.89%	-0.02%	-2.47%	2.31%	2.35%	4.05%
Financial Statement Return on Equity (Net Income/Total Equity)	-4.16%	-0.09%	-11.70%	4.61%	4.54%	6.77%



Individual Electricity Distributors As of December 31st, 2007 (Alphabetically Listed)	Halton Hills Hydro Inc.	Hearst Power Distribution Company Limited	Horizon Utilities Corporation	Hydro 2000 Inc.	Hydro Hawkesbury Inc.	Hydro One Brampton Networks Inc.
<u>Financial Ratios</u>						
Liquidity Ratios						
Current Ratio (Current Assets/Current Liabilities)	1.57	4.03	1.08	1.55	2.49	1.05
Leverage Ratios						
Debt Ratio (Long Term Debt/Total Assets)	34%	29%	29%	19%	20%	40%
Debt to Equity Ratio (Long Term Debt/Total Equity)	0.75	0.62	0.68	0.45	0.52	0.99
Interest Coverage (EBIT/Interest Charges)	2.22	-1.49	3.49	0.35	3.29	3.20
Profitability Ratios						
Financial Statement Return on Assets (Net Income/Total Assets)	2.25%	-2.50%	3.57%	-0.14%	2.24%	2.94%
Financial Statement Return on Equity (Net Income/Total Equity)	4.94%	-5.35%	8.33%	-0.34%	6.01%	7.18%



Individual Electricity Distributors As of December 31st, 2007 (Alphabetically Listed)	Hydro One Networks Inc.	Hydro Ottawa Limited	Innisfil Hydro Distribution Systems Limited	Kenora Hydro Electric Corporation Ltd.	Kingston Electricity Distribution Limited	Kitchener-Wilmot Hydro Inc.
<u>Financial Ratios</u>						
Liquidity Ratios						
Current Ratio (Current Assets/Current Liabilities)	0.73	1.21	1.81	2.76	1.64	3.09
Leverage Ratios						
Debt Ratio (Long Term Debt/Total Assets)	39%	44%	30%	26%	26%	38%
Debt to Equity Ratio (Long Term Debt/Total Equity)	1.23	1.31	0.58	0.43	0.66	0.83
Interest Coverage (EBIT/Interst Charges)	2.51	3.32	2.71	2.33	5.38	2.91
Profitability Ratios						
Financial Statement Return on Assets (Net Income/Total Assets)	1.86%	2.92%	3.69%	2.35%	4.01%	2.78%
Financial Statement Return on Equity (Net Income/Total Equity)	5.78%	8.62%	7.13%	3.89%	10.05%	6.03%



Individual Electricity Distributors As of December 31st, 2007 (Alphabetically Listed)	Lakefront Utilities Inc.	Lakeland Power Distribution Ltd.	London Hydro Inc.	Middlesex Power Distribution Corporation	Midland Power Utility Corporation	Milton Hydro Distribution Inc.
<u>Financial Ratios</u>						
Liquidity Ratios						
Current Ratio (Current Assets/Current Liabilities)	2.00	1.39	1.87	1.46	1.53	1.71
Leverage Ratios						
Debt Ratio (Long Term Debt/Total Assets)	40%	19%	28%	36%	8%	28%
Debt to Equity Ratio (Long Term Debt/Total Equity)	1.05	0.32	0.53	1.05	0.14	0.58
Interest Coverage (EBIT/Interst Charges)	2.12	7.54	3.70	3.46	28.18	3.66
Profitability Ratios						
Financial Statement Return on Assets (Net Income/Total Assets)	2.03%	3.84%	2.71%	2.93%	1.83%	3.51%
Financial Statement Return on Equity (Net Income/Total Equity)	5.28%	6.38%	5.18%	8.61%	2.98%	7.21%



Individual Electricity Distributors As of December 31st, 2007 (Alphabetically Listed)	Newbury Power Inc.	Newmarket Hydro Ltd.	Niagara Falls Hydro Inc.	Niagara-on-the- Lake Hydro Inc.	Norfolk Power Distribution Inc.	North Bay Hydro Distribution Limited
<u>Financial Ratios</u>						
Liquidity Ratios						
Current Ratio (Current Assets/Current Liabilities)	2.38	2.09	1.80	0.67	1.13	3.32
Leverage Ratios						
Debt Ratio (Long Term Debt/Total Assets)	28%	35%	34%	27%	33%	33%
Debt to Equity Ratio (Long Term Debt/Total Equity)	0.53	0.78	0.78	0.72	0.68	0.72
Interest Coverage (EBIT/Interst Charges)	2.84	4.57	2.92	2.55	2.41	3.60
Profitability Ratios						
Financial Statement Return on Assets (Net Income/Total Assets)	3.85%	5.20%	2.58%	3.79%	2.39%	2.28%
Financial Statement Return on Equity (Net Income/Total Equity)	7.29%	11.64%	5.93%	9.92%	4.87%	4.99%



Individual Electricity Distributors As of December 31st, 2007 (Alphabetically Listed)	Northern Ontario Wires Inc.	Oakville Hydro Electricity Distribution Inc.	Orangeville Hydro Limited	Orillia Power Distribution Corporation	Oshawa PUC Networks Inc.	Ottawa River Power Corporation
<u>Financial Ratios</u>						
Liquidity Ratios						
Current Ratio (Current Assets/Current Liabilities)	1.83	1.39	1.90	2.85	2.85	2.86
Leverage Ratios						
Debt Ratio (Long Term Debt/Total Assets)	28%	39%	35%	38%	35%	30%
Debt to Equity Ratio (Long Term Debt/Total Equity)	0.64	1.03	0.79	0.90	1.05	0.71
Interest Coverage (EBIT/Interst Charges)	2.59	2.63	3.39	2.81	4.23	2.00
Profitability Ratios						
Financial Statement Return on Assets (Net Income/Total Assets)	2.38%	1.51%	3.58%	2.51%	4.45%	1.65%
Financial Statement Return on Equity (Net Income/Total Equity)	5.52%	3.99%	8.22%	5.93%	13.12%	3.91%



Individual Electricity Distributors As of December 31st, 2007 (Alphabetically Listed)	PUC Distribution Inc.	Parry Sound Power Corporation	Peninsula West Utilities Limited	Peterborough Distribution Incorporated	Port Colborne Hydro Inc. (CNP)	PowerStream Inc.
<u>Financial Ratios</u>						
Liquidity Ratios						
Current Ratio (Current Assets/Current Liabilities)	1.94	2.80	0.60	1.59	0.22	1.17
Leverage Ratios						
Debt Ratio (Long Term Debt/Total Assets)	77%	27%	0%	38%	0%	42%
Debt to Equity Ratio (Long Term Debt/Total Equity)	15.13	0.54	0.00	0.87	-	1.21
Interest Coverage (EBIT/Interst Charges)	0.95	2.96	2.82	2.69	0.53	3.04
Profitability Ratios						
Financial Statement Return on Assets (Net Income/Total Assets)	-1.29%	2.66%	0.04%	2.34%	-1.33%	3.47%
Financial Statement Return on Equity (Net Income/Total Equity)	-25.29%	5.25%	0.09%	5.34%	-	10.11%



Individual Electricity Distributors As of December 31st, 2007 (Alphabetically Listed)	Renfrew Hydro Inc.	Rideau St. Lawrence Distribution Inc.	Sioux Lookout Hydro Inc.	St. Thomas Energy Inc.	Thunder Bay Hydro Electricity Distribution Inc.	Tillsonburg Hydro Inc.
<u>Financial Ratios</u>						
Liquidity Ratios						
Current Ratio (Current Assets/Current Liabilities)	1.01	0.86	1.39	1.25	3.05	2.28
Leverage Ratios						
Debt Ratio (Long Term Debt/Total Assets)	1%	4%	30%	30%	38%	23%
Debt to Equity Ratio (Long Term Debt/Total Equity)	0.02	0.09	0.85	0.68	0.85	0.38
Interest Coverage (EBIT/Interst Charges)	1.30	3.63	1.56	3.25	4.62	31.18
Profitability Ratios						
Financial Statement Return on Assets (Net Income/Total Assets)	1.59%	2.54%	0.60%	2.78%	0.33%	2.96%
Financial Statement Return on Equity (Net Income/Total Equity)	3.97%	5.82%	1.72%	6.20%	0.73%	4.79%



Individual Electricity Distributors As of December 31st, 2007 (Alphabetically Listed)	Toronto Hydro- Electric System Limited	Veridian Connections Inc.	Wasaga Distribution Inc.	Waterloo North Hydro Inc.	Welland Hydro- Electric System Corp.	Wellington North Power Inc.
<u>Financial Ratios</u>						
Liquidity Ratios						
Current Ratio (Current Assets/Current Liabilities)	0.59	1.56	-1.29	1.76	3.47	1.42
Leverage Ratios						
Debt Ratio (Long Term Debt/Total Assets)	18%	36%	39%	33%	39%	27%
Debt to Equity Ratio (Long Term Debt/Total Equity)	0.59	0.98	0.48	0.77	0.94	0.72
Interest Coverage (EBIT/Interest Charges)	2.65	3.75	4.98	3.16	2.24	0.96
Profitability Ratios						
Financial Statement Return on Assets (Net Income/Total Assets)	2.80%	4.57%	5.19%	3.88%	0.29%	-0.15%
Financial Statement Return on Equity (Net Income/Total Equity)	9.03%	12.55%	6.33%	9.01%	0.68%	-0.40%



Individual Electricity Distributors As of December 31st, 2007 (Alphabetically Listed)	West Coast Huron Energy Inc.	West Nipissing Energy Services Ltd.	West Perth Power Inc.	Westario Power Inc.	Whitby Hydro Electric Corporation	Woodstock Hydro Services Inc.
<u>Financial Ratios</u>						
Liquidity Ratios						
Current Ratio (Current Assets/Current Liabilities)	3.00	2.33	2.64	0.68	2.15	2.55
Leverage Ratios						
Debt Ratio (Long Term Debt/Total Assets)	18%	67%	30%	13%	36%	37%
Debt to Equity Ratio (Long Term Debt/Total Equity)	0.26	6.53	0.63	0.28	0.72	0.78
Interest Coverage (EBIT/Interst Charges)	4.09	19.71	1.64	2.32	2.99	3.17
Profitability Ratios						
Financial Statement Return on Assets (Net Income/Total Assets)	4.30%	6.87%	1.41%	2.41%	1.17%	3.52%
Financial Statement Return on Equity (Net Income/Total Equity)	6.22%	67.08%	2.97%	5.06%	2.35%	7.46%



Individual Electricity Distributors As of December 31st, 2007 (Alphabetically Listed)	Atikokan Hydro Inc.	Barrie Hydro Distribution Inc.	Bluewater Power Distribution Corporation	Brant County Power Inc.	Brantford Power Inc.	Burlington Hydro Inc.
GENERAL STATISTICS						
Population Served	3,000	181,930	84,379	25,000	91,487	170,100
Municipal Population	3,000	197,750	86,689	30,000	91,487	170,100
Seasonal Population	0	0	0	0	0	0
Total Customers	1,711	68,535	35,906	9,339	37,108	61,776
Residential Customers	1,450	61,561	31,389	7,933	33,526	55,919
General Service <50kW Customers	240	6,195	4,117	1,279	3,171	4,845
General Service >50kW Customers	21	779	395	127	411	1,012
Large User (>5000kW) Customers	0	0	5	0	0	0
Total Service Area (sq km)	380	374	201	257	74	188
Rural Service Area (sq km)	0	11	147	240	0	90
Urban Service Area (sq km)	380	363	54	17	74	98
Total km of Line	92	1,445	746	320	490	1,548
Overhead km of line	92	652	577	282	273	925
Underground km of line	0	793	169	38	217	623
Total kWh sold (excluding losses)	37,619,459	1,508,322,713	998,648,369	290,630,141	1,008,306,513	1,703,255,570
Total Distribution Losses (kWh)	3,084,336	82,532,878	27,519,962	16,117,469	31,841,054	63,553,848
Total kWh Purchased	40,703,795	1,590,855,591	1,026,168,331	306,747,610	1,040,147,567	1,766,809,418
Winter Peak (kW)	7,722	262,451	174,463	44,355	162,924	280,394
Summer Peak (kW)	7,100	309,144	208,366	46,817	191,679	367,280
Average Peak (kW)	6,355	264,432	133,838	42,630	164,692	294,586
Capital Additions in 2007	\$ 145,894	\$ 18,475,847	\$ 4,858,829	\$ 1,357,802	\$ 6,684,595	\$ 10,241,922



Individual Electricity Distributors As of December 31st, 2007 (Alphabetically Listed)	COLLUS Power Corp.	Cambridge and North Dumfries Hydro Inc.	Canadian Niagara Power Inc.- Fort Erie	Centre Wellington Hydro Ltd.	Chapleau Public Utilities Corporation	Chatham-Kent Hydro Inc.
GENERAL STATISTICS						
Population Served	23,600	133,480	29,925	18,156	2,428	94,769
Municipal Population	23,600	133,480	29,925	26,520	2,428	107,341
Seasonal Population	0	0	0	0	3	0
Total Customers	14,325	48,944	15,494	6,239	1,338	32,007
Residential Customers	12,535	43,623	14,073	5,510	1,159	28,391
General Service <50kW Customers	1,667	4,602	1,280	673	165	3,190
General Service >50kW Customers	121	716	141	56	14	424
Large User (>5000kW) Customers	2	3	0	0	0	2
Total Service Area (sq km)	57	303	168	10	2	70
Rural Service Area (sq km)	0	213	133	0	0	0
Urban Service Area (sq km)	57	90	35	10	2	70
Total km of Line	322	1,101	525	146	27	782
Overhead km of line	213	728	481	77	26	568
Underground km of line	109	373	44	69	1	214
					6,873	
Total kWh sold (excluding losses)	331,005,902	1,569,666,081	297,196,137	152,547,748	28,525,074	844,556,150
Total Distribution Losses (kWh)	11,060,211	39,527,350	13,143,561	7,860,442	1,332,160	37,253,907
Total kWh Purchased	342,066,113	1,609,193,431	310,339,698	160,408,190	29,857,234	881,810,057
Winter Peak (kW)	62,291	254,098	50,700	26,792	7,058	132,956
Summer Peak (kW)	50,409	308,393	56,500	27,573	6,873	171,620
Average Peak (kW)	53,215	262,358	49,100	25,702	4,761	141,969
Capital Additions in 2007	\$ 2,266,008	\$ 10,013,176	\$ 4,403,921	\$ 510,941	\$ -	\$ 6,382,676



Individual Electricity Distributors As of December 31st, 2007 (Alphabetically Listed)	Clinton Power Corporation	Cooperative Hydro Embrun Inc.	E.L.K. Energy Inc.	ENWIN Powerlines Ltd.	Eastern Ontario Power (CNP)	Enersource Hydro Mississauga Inc.
GENERAL STATISTICS						
Population Served	3,100	4,000	21,873	215,718	6,700	704,000
Municipal Population	3,100	12,500	74,185	216,473	5,000	704,000
Seasonal Population	0	0	0	0	200	0
Total Customers	1,639	1,882	10,719	84,757	3,552	183,715
Residential Customers	1,393	1,689	9,539	76,496	3,100	162,775
General Service <50kW Customers	229	181	1,071	7,057	417	16,430
General Service >50kW Customers	17	12	109	1,194	35	4,501
Large User (>5000kW) Customers	0	0	0	10	0	9
Total Service Area (sq km)	4	5	22	120	66	287
Rural Service Area (sq km)	0	0	0	0	48	0
Urban Service Area (sq km)	4	5	22	120	18	287
Total km of Line	21	27	146	1,133	196	5,180
Overhead km of line	17	15	90	723	174	1,799
Underground km of line	4	12	56	410	22	3,381
Total kWh sold (excluding losses)	30,952,475	29,064,175	258,921,039	2,984,344,029	66,086,052	7,935,279,547
Total Distribution Losses (kWh)	1,052,387	956,342	12,155,181	86,487,706	7,758,095	314,412,434
Total kWh Purchased	32,004,862	30,020,517	271,076,220	3,070,831,735	73,844,147	8,249,691,981
Winter Peak (kW)	5,844	7,084	49,746	458,800	13,937	1,234,600
Summer Peak (kW)	5,739	5,833	61,745	577,900	12,096	1,556,900
Average Peak (kW)	5,279	5,675	50,685	482,475	11,851	1,285,767
Capital Additions in 2007	\$ 74,470	\$ 74,996	\$ 1,599,540	\$ 10,310,307	\$ 1,195,735	\$ 46,620,200



Individual Electricity Distributors As of December 31st, 2007 (Alphabetically Listed)	Erie Thames Powerlines Corporation	Espanola Regional Hydro Distribution Corporation	Essex Powerlines Corporation	Festival Hydro Inc.	Fort Frances Power Corporation	Grand Valley Energy Inc.
GENERAL STATISTICS						
Population Served	32,042	7,138	69,300	44,072	8,315	1,600
Municipal Population	35,246	8,700	102,075	44,072	8,315	2,529
Seasonal Population	235	65	0	0	0	0
Total Customers	14,181	3,316	27,789	19,262	3,864	677
Residential Customers	12,534	2,831	25,579	17,060	3,380	592
General Service <50kW Customers	1,492	469	1,996	1,990	437	78
General Service >50kW Customers	154	16	214	210	47	7
Large User (>5000kW) Customers	1	0	0	2	0	0
Total Service Area (sq km)	1,877	99	104	44	26	1
Rural Service Area (sq km)	1,830	73	38	0	0	0
Urban Service Area (sq km)	47	26	66	44	26	1
Total km of Line	265	137	469	274	84	9
Overhead km of line	210	126	233	184	76	8
Underground km of line	55	11	236	90	8	1
Total kWh sold (excluding losses)	411,340,493	63,704,669	536,952,443	615,535,179	83,900,561	9,404,606
Total Distribution Losses (kWh)	14,557,451	2,018,514	27,198,280	18,787,801	3,793,408	228,410
Total kWh Purchased	425,897,944	65,723,183	564,150,723	634,322,980	87,693,969	9,633,017
Winter Peak (kW)	77,850	13,650	113,400	100,885	18,097	2,183
Summer Peak (kW)	73,806	9,516	142,300	107,690	14,414	1,636
Average Peak (kW)	68,192	10,809	107,800	99,374	14,323	1,924
Capital Additions in 2007	\$ 2,099,802	\$ 186,280	\$ 3,713,144	\$ 3,577,541	\$ 146,935	\$ 8,004



Individual Electricity Distributors As of December 31st, 2007 (Alphabetically Listed)	Great Lakes Power Limited	Greater Sudbury Hydro Inc.	Grimsby Power Incorporated	Guelph Hydro Electric Systems Inc.	Haldimand County Hydro Inc.	Halton Hills Hydro Inc.
GENERAL STATISTICS						
Population Served	17,195	102,811	21,500	130,309	45,212	55,289
Municipal Population	10,104	155,219	21,500	130,309	45,212	55,289
Seasonal Population	3,707	142	0	0	0	0
Total Customers	11,522	43,167	9,792	47,720	20,698	20,214
Residential Customers	10,539	38,853	8,946	43,369	18,139	18,337
General Service <50kW Customers	932	3,816	743	3,612	2,424	1,686
General Service >50kW Customers	50	498	103	735	135	191
Large User (>5000kW) Customers	1	0	0	4	0	0
Total Service Area (sq km)	14,200	0	67	93	1,252	280
Rural Service Area (sq km)	14,197	0	45	0	1,216	255
Urban Service Area (sq km)	3	0	22	93	36	25
Total km of Line	1,823	833	235	1,030	1,706	1,344
Overhead km of line	1,822	660	178	426	1,625	881
Underground km of line	1	173	57	604	81	463
Total kWh sold (excluding losses)	188,441,706	900,265,885	173,870,720	1,611,297,693	360,337,098	523,095,984
Total Distribution Losses (kWh)	17,457,844	46,850,107	8,746,763	25,841,534	26,159,782	-10,709,314
Total kWh Purchased	205,899,550	947,115,992	182,617,483	1,637,139,228	386,496,880	512,386,670
Winter Peak (kW)	41,804	182,354	35,770	255,488	81,117	118,782
Summer Peak (kW)	26,592	173,560	42,790	281,377	87,934	122,494
Average Peak (kW)	31,327	157,232	33,692	252,612	77,787	101,227
Capital Additions in 2007	\$ 8,616,845	\$ 6,395,615	\$ 2,024,352	\$ 11,331,791	\$ 3,309,123	\$ 3,974,253



Individual Electricity Distributors As of December 31st, 2007 (Alphabetically Listed)	Hearst Power Distribution Company Limited	Horizon Utilities Corporation	Hydro 2000 Inc.	Hydro Hawkesbury Inc.	Hydro One Brampton Networks Inc.	Hydro One Networks Inc.
GENERAL STATISTICS						
Population Served	5,635	560,668	2,520	10,500	444,158	2,892,713
Municipal Population	5,635	636,548	9,400	10,500	444,158	2,892,713
Seasonal Population	0	0	0	0	0	154,779
Total Customers	2,772	232,493	1,159	5,428	126,026	1,173,360
Residential Customers	2,330	210,358	1,001	4,775	117,024	1,064,172
General Service <50kW Customers	396	19,969	146	573	7,440	109,157
General Service >50kW Customers	46	2,154	12	79	1,556	0
Large User (>5000kW) Customers	0	12	0	1	6	31
Total Service Area (sq km)	93	426	9	8	269	650,000
Rural Service Area (sq km)	0	88	0	0	0	650,000
Urban Service Area (sq km)	93	338	9	8	269	0
Total km of Line	68	3,343	21	65	2,702	120,231
Overhead km of line	57	1,504	18	56	800	115,990
Underground km of line	11	1,839	3	9	1,902	4,241
Total kWh sold (excluding losses)	111,646,717	6,282,229,664	25,247,492	192,427,726	3,967,000,000	24,468,352,000
Total Distribution Losses (kWh)	-534,758	174,286,715	1,886,962	7,357,240	-4,200,000	1,784,308,000
Total kWh Purchased	111,111,959	6,456,516,379	27,134,454	199,784,966	3,962,800,000	26,252,660,000
Winter Peak (kW)	21,901	958,009	6,571	37,110	618,000	4,146,927
Summer Peak (kW)	19,067	1,161,891	4,253	33,120	772,100	3,365,195
Average Peak (kW)	18,375	975,908	4,498	32,628	637,700	3,399,384
Capital Additions in 2007	\$ 51,780	\$ 38,502,612	\$ 90,093	\$ 67,499	\$ 30,881,875	\$ 476,000,000



Individual Electricity Distributors As of December 31st, 2007 (Alphabetically Listed)	Hydro Ottawa Limited	Innisfil Hydro Distribution Systems Limited	Kenora Hydro Electric Corporation Ltd.	Kingston Electricity Distribution Limited	Kitchener-Wilmot Hydro Inc.	Lakefront Utilities Inc.
GENERAL STATISTICS						
Population Served	799,993	32,007	12,000	57,800	236,883	22,000
Municipal Population	888,882	32,007	16,500	119,000	236,883	22,000
Seasonal Population	0	753	0	0	0	0
Total Customers	287,006	14,120	5,642	26,632	82,599	9,057
Residential Customers	260,359	13,132	4,840	22,839	74,392	7,878
General Service <50kW Customers	23,292	916	736	3,443	7,198	1,044
General Service >50kW Customers	3,344	72	66	347	1,005	135
Large User (>5000kW) Customers	11	0	0	3	4	0
Total Service Area (sq km)	1,104	292	24	32	404	27
Rural Service Area (sq km)	650	230	0	0	280	0
Urban Service Area (sq km)	454	62	24	32	124	27
Total km of Line	5,739	637	98	348	1,840	114
Overhead km of line	2,898	521	88	242	1,043	95
Underground km of line	2,841	116	10	106	797	19
Total kWh sold (excluding losses)	7,547,945,426	224,169,495	111,276,421	723,094,046	1,918,248,429	292,657,767
Total Distribution Losses (kWh)	316,909,940	10,952,486	4,074,062	8,698,024	60,741,519	5,337,020
Total kWh Purchased	7,864,855,366	235,121,981	115,350,483	731,792,070	1,978,989,948	297,994,787
Winter Peak (kW)	1,323,948	48,562	20,993	132,343	312,517	49,230
Summer Peak (kW)	1,425,095	43,491	20,499	110,399	370,934	46,392
Average Peak (kW)	1,239,616	41,342	18,475	111,275	320,111	45,049
Capital Additions in 2007	\$ 68,695,675	\$ 2,127,842	\$ 1,154,773	\$ 3,083,142	\$ 16,669,946	\$ 1,144,906



Individual Electricity Distributors As of December 31st, 2007 (Alphabetically Listed)	Lakeland Power Distribution Ltd.	London Hydro Inc.	Middlesex Power Distribution Corporation	Midland Power Utility Corporation	Milton Hydro Distribution Inc.	Newbury Power Inc.
GENERAL STATISTICS						
Population Served	21,007	355,000	6,763	16,000	65,000	0
Municipal Population	34,035	355,000	18,231	17,000	65,000	439
Seasonal Population	150	0	0	0	0	0
Total Customers	9,135	142,105	6,957	6,709	22,811	199
Residential Customers	7,457	128,587	6,176	5,865	20,305	166
General Service <50kW Customers	1,580	11,912	687	736	2,217	30
General Service >50kW Customers	98	1,603	93	108	287	3
Large User (>5000kW) Customers	0	3	1	0	2	0
Total Service Area (sq km)	144	421	21	20	370	4
Rural Service Area (sq km)	128	258	16	0	313	4
Urban Service Area (sq km)	16	163	5	20	57	0
Total km of Line	355	2,609	106	115	833	4
Overhead km of line	285	1,274	81	79	540	3
Underground km of line	70	1,335	25	36	293	1
Total kWh sold (excluding losses)	215,293,831	3,387,777,810	198,623,692	224,566,924	677,339,123	0
Total Distribution Losses (kWh)	7,877,952	125,960,254	9,838,188	7,760,604	22,113,512	0
Total kWh Purchased	223,171,783	3,513,738,064	208,461,880	232,327,528	699,452,635	0
Winter Peak (kW)	42,285	566,710	32,173	38,557	111,168	0
Summer Peak (kW)	34,402	681,825	40,485	40,128	130,375	0
Average Peak (kW)	35,515	576,717	33,778	36,784	111,065	0
Capital Additions in 2007	\$ 1,618,531	\$ 25,018,568	\$ 1,206,434	\$ 1,418,741	\$ 5,089,158	\$ -



Individual Electricity Distributors As of December 31st, 2007 (Alphabetically Listed)	Newmarket - Tay Power Distribution Ltd.	Niagara Falls Hydro Inc.	Niagara-on-the- Lake Hydro Inc.	Norfolk Power Distribution Inc.	North Bay Hydro Distribution Limited	Northern Ontario Wires Inc.
GENERAL STATISTICS						
Population Served	89,161	82,200	14,800	31,500	55,000	14,000
Municipal Population	113,155	82,200	14,800	62,000	55,000	18,777
Seasonal Population	525	0	250	200	0	0
Total Customers	31,193	34,704	7,778	18,641	23,642	6,112
Residential Customers	27,862	30,622	6,424	16,378	20,726	5,249
General Service <50kW Customers	2,940	3,260	1,239	2,097	2,647	793
General Service >50kW Customers	391	822	115	166	269	70
Large User (>5000kW) Customers	0	0	0	0	0	0
Total Service Area (sq km)	74	227	133	693	330	28
Rural Service Area (sq km)	3	175	119	549	279	0
Urban Service Area (sq km)	71	52	14	144	51	28
Total km of Line	1,034	1,658	337	655	608	370
Overhead km of line	580	989	247	573	513	365
Underground km of line	454	669	90	82	95	5
Total kWh sold (excluding losses)	738,804,880	884,589,917	179,610,430	382,900,881	570,440,204	132,769,912
Total Distribution Losses (kWh)	24,898,032	50,598,543	8,896,160	20,327,544	28,200,095	7,913,979
Total kWh Purchased	763,702,912	935,188,460	188,506,590	403,228,425	598,640,299	140,683,891
Winter Peak (kW)	125,023	137,845	29,786	71,056	113,519	25,689
Summer Peak (kW)	155,199	184,119	41,136	77,718	88,833	24,540
Average Peak (kW)	129,498	152,115	32,243	68,783	92,806	21,945
Capital Additions in 2007	\$ 6,579,557	\$ 6,400,097	\$ 1,537,607	\$ 6,458,620	\$ 2,482,228	\$ 404,175



Individual Electricity Distributors As of December 31st, 2007 (Alphabetically Listed)	Oakville Hydro Electricity Distribution Inc.	Orangeville Hydro Limited	Orillia Power Distribution Corporation	Oshawa PUC Networks Inc.	Ottawa River Power Corporation	PUC Distribution Inc.
GENERAL STATISTICS						
Population Served	169,800	28,178	30,300	155,000	20,200	77,948
Municipal Population	169,800	28,178	30,300	155,000	20,200	74,948
Seasonal Population	0	0	0	0	0	100
Total Customers	59,883	10,134	12,648	50,980	10,230	32,512
Residential Customers	53,646	8,995	11,102	46,679	8,625	28,723
General Service <50kW Customers	5,430	1,014	1,384	3,765	1,469	3,194
General Service >50kW Customers	806	125	162	534	136	595
Large User (>5000kW) Customers	1	0	0	2	0	0
Total Service Area (sq km)	143	16	27	149	35	342
Rural Service Area (sq km)	41	0	0	78	0	284
Urban Service Area (sq km)	102	16	27	71	35	58
Total km of Line	1,397	159	302	953	146	725
Overhead km of line	545	93	245	513	127	611
Underground km of line	852	66	57	440	19	114
Total kWh sold (excluding losses)	1,538,669,235	247,266,985	321,106,485	1,138,519,824	197,591,897	701,800,772
Total Distribution Losses (kWh)	64,816,665	8,159,735	12,438,755	52,633,766	5,543,235	36,292,804
Total kWh Purchased	1,603,485,900	255,426,719	333,545,240	1,191,153,590	203,135,132	738,093,576
Winter Peak (kW)	268,651	42,618	57,057	212,930	38,695	139,708
Summer Peak (kW)	351,188	46,056	55,709	221,904	32,198	101,464
Average Peak (kW)	286,846	41,714	52,880	198,924	31,160	115,546
Capital Additions in 2007	\$ 16,575,734	\$ 1,584,588	\$ 1,165,487	\$ 8,721,855	\$ 834,649	\$ 4,062,771



Individual Electricity Distributors As of December 31st, 2007 (Alphabetically Listed)	Parry Sound Power Corporation	Peninsula West Utilities Limited	Peterborough Distribution Incorporated	Port Colborne (CNP)	PowerStream Inc.	Renfrew Hydro Inc.
GENERAL STATISTICS						
Population Served	6,500	50,161	79,496	18,599	706,000	7,800
Municipal Population	6,500	51,044	79,496	18,599	706,000	7,800
Seasonal Population	0	0	0	0	0	0
Total Customers	3,365	15,491	34,161	9,159	236,220	4,149
Residential Customers	2,696	13,703	30,138	8,131	207,783	3,559
General Service <50kW Customers	604	1,674	3,641	949	24,726	524
General Service >50kW Customers	65	114	380	79	3,710	66
Large User (>5000kW) Customers	0	0	2	0	1	0
Total Service Area (sq km)	15	599	64	122	640	13
Rural Service Area (sq km)	0	584	0	102	184	0
Urban Service Area (sq km)	15	15	64	20	456	13
Total km of Line	128	1,115	545	310	6,200	55
Overhead km of line	117	1,027	384	296	1,906	53
Underground km of line	11	88	161	14	4,294	2
Total kWh sold (excluding losses)	89,725,495	364,304,553	820,201,487	192,719,076	6,832,453,515	99,235,605
Total Distribution Losses (kWh)	3,615,131	-20,621,012	37,469,402	7,604,592	291,590,060	5,472,981
Total kWh Purchased	93,340,626	343,683,541	857,670,889	200,323,668	7,124,043,575	104,708,586
Winter Peak (kW)	19,170	59,655	148,761	38,400	1,096,729	19,154
Summer Peak (kW)	12,650	70,338	152,219	41,000	1,518,593	19,086
Average Peak (kW)	14,410	60,393	139,052	34,800	1,211,502	17,421
Capital Additions in 2007	\$ 183,262	\$ 10,864,053	\$ 5,388,661	\$ 1,249,156	\$ 62,680,364	\$ 508,785



Individual Electricity Distributors As of December 31st, 2007 (Alphabetically Listed)	Rideau St. Lawrence Distribution Inc.	Sioux Lookout Hydro Inc.	St. Thomas Energy Inc.	Thunder Bay Hydro Electricity Distribution Inc.	Tillsonburg Hydro Inc.	Toronto Hydro- Electric System Limited
GENERAL STATISTICS						
Population Served	9,900	5,336	36,000	109,973	15,140	2,503,281
Municipal Population	16,700	5,336	36,000	109,141	15,000	2,503,281
Seasonal Population	0	108	0	0	0	0
Total Customers	5,864	2,754	15,919	49,421	6,571	679,913
Residential Customers	4,967	2,310	14,064	44,460	5,844	601,515
General Service <50kW Customers	832	403	1,669	4,436	643	66,245
General Service >50kW Customers	65	41	185	525	83	12,104
Large User (>5000kW) Customers	0	0	1	0	1	49
Total Service Area (sq km)	18	536	33	381	24	630
Rural Service Area (sq km)	7	530	0	259	3	0
Urban Service Area (sq km)	11	6	33	122	21	630
Total km of Line	87	211	240	1,160	153	9,819
Overhead km of line	78	205	160	929	102	4,263
Underground km of line	9	6	80	231	51	5,556
Total kWh sold (excluding losses)	113,998,664	89,846,017	366,885,093	1,027,372,194	228,404,299	25,759,823,918
Total Distribution Losses (kWh)	11,562,896	4,038,863	9,997,376	47,267,857	9,692,832	919,607,264
Total kWh Purchased	125,561,560	93,884,880	376,882,469	1,074,640,051	238,097,131	26,679,431,182
Winter Peak (kW)	32,731	22,552	60,692	190,600	41,226	4,111,669
Summer Peak (kW)	31,422	14,949	73,561	177,000	48,436	4,788,341
Average Peak (kW)	23,280	15,505	61,686	167,300	39,554	4,170,644
Capital Additions in 2007	\$ 226,508	\$ 264,762	\$ 2,687,173	\$ 6,018,518	\$ 941,518	\$ 303,620,704



Individual Electricity Distributors As of December 31st, 2007 (Alphabetically Listed)	Veridian Connections Inc.	Wasaga Distribution Inc.	Waterloo North Hydro Inc.	Welland Hydro- Electric System Corp.	Wellington North Power Inc.	West Coast Huron Energy Inc.
GENERAL STATISTICS						
Population Served	326,064	17,000	147,360	50,331	6,989	7,411
Municipal Population	396,107	17,000	147,360	50,331	11,500	7,411
Seasonal Population	1,594	1,200	0	0	0	0
Total Customers	109,225	11,311	49,558	21,389	3,486	3,853
Residential Customers	98,952	10,481	43,750	19,512	2,978	3,290
General Service <50kW Customers	9,195	795	5,176	1,695	459	512
General Service >50kW Customers	1,073	35	630	180	49	50
Large User (>5000kW) Customers	5	0	2	2	0	1
Total Service Area (sq km)	639	61	672	86	14	8
Rural Service Area (sq km)	386	8	607	0	0	0
Urban Service Area (sq km)	253	53	65	86	14	8
Total km of Line	2,066	229	1,522	438	73	65
Overhead km of line	1,386	125	1,042	329	64	52
Underground km of line	680	104	480	109	9	13
Total kWh sold (excluding losses)	2,547,644,408	115,252,109	1,367,149,466	471,241,265	95,199,648	145,743,158
Total Distribution Losses (kWh)	114,020,946	4,779,464	56,681,475	22,988,621	6,705,551	4,466,461
Total kWh Purchased	2,661,665,354	120,031,573	1,423,830,941	494,229,886	101,905,199	150,209,619
Winter Peak (kW)	444,200	24,081	234,655	83,837	16,478	26,000
Summer Peak (kW)	480,200	26,430	264,915	104,372	15,711	26,000
Average Peak (kW)	423,075	20,908	231,959	84,473	15,251	24,000
Capital Additions in 2007	\$ 21,166,855	\$ 829,493	\$ 11,786,246	\$ 3,066,554	\$ 451,826	\$ 326,034



Individual Electricity Distributors As of December 31st, 2007 (Alphabetically Listed)	West Nipissing Energy Services Ltd.	West Perth Power Inc.	Westario Power Inc.	Whitby Hydro Electric Corporation	Woodstock Hydro Services Inc.
GENERAL STATISTICS					
Population Served	6,718	3,900	40,000	110,000	35,000
Municipal Population	15,000	9,000	78,420	110,000	36,000
Seasonal Population	6	0	0	0	0
Total Customers	3,284	2,034	21,297	38,278	14,441
Residential Customers	2,922	1,762	18,603	35,594	13,036
General Service <50kW Customers	362	252	2,443	2,268	1,212
General Service >50kW Customers	0	20	251	416	192
Large User (>5000kW) Customers	0	0	0	0	1
Total Service Area (sq km)	9	6	49	147	31
Rural Service Area (sq km)	0	0	0	76	0
Urban Service Area (sq km)	9	6	49	71	31
Total km of Line	38	36	435	1,021	268
Overhead km of line	36	25	309	491	152
Underground km of line	2	11	126	530	116
Total kWh sold (excluding losses)	58,425,965	61,945,677	464,427,616	867,531,513	394,794,950
Total Distribution Losses (kWh)	5,783,222	5,237,863	6,078,404	43,647,726	15,762,251
Total kWh Purchased	64,209,187	67,183,540	470,506,020	911,179,239	410,557,201
Winter Peak (kW)	13,098	10,524	90,205	152,456	67,025
Summer Peak (kW)	9,430	11,279	73,472	185,761	74,897
Average Peak (kW)	10,222	10,450	73,257	153,126	66,316
Capital Additions in 2007	\$ 186,748	\$ 118,996	\$ 4,870,486	\$ 6,800,505	\$ 2,744,961



Individual Electricity Distributors As of December 31st, 2007 (Alphabetically Listed)	Atikokan Hydro Inc.	Barrie Hydro Distribution Inc.	Bluewater Power Distribution Corporation	Brant County Power Inc.	Brantford Power Inc.	Burlington Hydro Inc.
UNITIZED STATISTICS						
# of Customers per sq km of Service Area	4.50	183.25	178.64	36.34	501.46	251.32
# of Customers per km of Line	18.60	47.43	48.13	29.18	75.73	44.49
Average Revenue from Distribution						
Per Customer annually	\$ 523.96	\$ 416.84	\$ 453.12	\$ 667.16	\$ 467.54	\$ 344.84
Per Total kWh Purchased	\$ 0.024	\$ 0.019	\$ 0.016	\$ 0.021	\$ 0.016	\$ 0.015
Average Cost of Power						
Per Customer annually	\$ 1,606	\$ 1,646	\$ 2,006	\$ 2,090	\$ 2,039	\$ 1,653
Per Total kWh Purchased	\$ 0.067	\$ 0.071	\$ 0.070	\$ 0.064	\$ 0.073	\$ 0.069
Avg monthly kWh consumed per customer	1,982	1,934	2,382	2,737	2,336	1,990
Avg Peak (kW) per Customer	3.71	3.86	3.73	4.56	4.44	3.71
OM&A Per Customer	\$ 443.69	\$ 125.23	\$ 252.82	\$ 171.22	\$ 214.46	\$ 229.38
Net Income (Loss) Per Customer	\$ 10.77	\$ 33.93	\$ 45.72	\$ 273.51	\$ 72.88	\$ 38.82
Net Fixed Assets per Customer	\$ 1,149	\$ 2,038	\$ 1,052	\$ 2,019	\$ 1,520	\$ 718
SERVICE QUALITY INDICATORS						
% Completed within approved time						
Low Voltage Connections	100.00	98.20	100.00	100.00	100.00	98.70
High Voltage Connections	-	100.00	100.00	-	100.00	-
Cable Locates	100.00	99.80	97.40	98.70	99.50	99.40
Phone Calls	100.00	69.30	76.30	90.30	80.70	74.70
Annual Appointments	100.00	100.00	100.00	100.00	100.00	100.00
Annual Written Response	100.00	100.00	100.00	-	98.80	100.00
Emergency Urban Response	100.00	93.30	100.00	-	100.00	-
Emergency Rural Response	100.00	-	100.00	100.00	-	-
Service Reliability Indices						
Saidi-Annual	4.90	2.38	2.76	2.95	1.20	1.03
Saifi-Annual	2.22	3.23	2.66	2.64	1.25	0.68
Caidi-Annual	2.21	0.74	1.04	1.11	0.96	1.51



Individual Electricity Distributors As of December 31st, 2007 (Alphabetically Listed)	COLLUS Power Corp.	Cambridge and North Dumfries Hydro Inc.	Canadian Niagara Power Inc.- Fort Erie	Centre Wellington Hydro Ltd.	Chapleau Public Utilities Corporation	Chatham-Kent Hydro Inc.
UNITIZED STATISTICS						
# of Customers per sq km of Service Area	251.32	161.53	92.23	623.90	669.00	457.24
# of Customers per km of Line	44.49	44.45	29.51	42.73	49.56	40.93
Average Revenue from Distribution						
Per Customer annually	\$ 344.84	\$ 451.42	\$ 614.87	\$ 416.18	\$ 469.23	\$ 437.44
Per Total kWh Purchased	\$ 0.015	\$ 0.014	\$ 0.032	\$ 0.017	\$ 0.022	\$ 0.017
Average Cost of Power						
Per Customer annually	\$ 1,653	\$ 2,347	\$ 1,423	\$ 1,648	\$ 1,538	\$ 2,006
Per Total kWh Purchased	\$ 0.069	\$ 0.071	\$ 0.071	\$ 0.064	\$ 0.069	\$ 0.073
Avg monthly kWh consumed per customer	1,990	2,740	1,669	2,143	1,860	2,296
Avg Peak (kW) per Customer	3.71	5.36	3.17	4.12	3.56	4.44
OM&A Per Customer	\$ 229.38	\$ 178.66	\$ 313.33	\$ 240.83	\$ 475.91	\$ 164.94
Net Income (Loss) Per Customer	\$ 38.82	\$ 77.86	\$ 31.60	\$ 9.76	\$ (18.79)	\$ 63.48
Net Fixed Assets per Customer	\$ 718	\$ 1,645	\$ 2,259	\$ 1,116	\$ 652	\$ 1,404
SERVICE QUALITY INDICATORS						
% Completed within approved time						
Low Voltage Connections	100.00	96.60	99.30	100.00	100.00	95.10
High Voltage Connections	100.00	-	-	-	-	-
Cable Locates	100.00	99.80	100.00	99.80	100.00	98.80
Phone Calls	90.20	73.30	83.80	100.00	100.00	77.30
Annual Appointments	99.40	100.00	100.00	100.00	100.00	100.00
Annual Written Response	100.00	100.00	100.00	100.00	100.00	100.00
Emergency Urban Response	100.00	97.80	100.00	96.20	-	92.40
Emergency Rural Response	-	91.00	100.00	-	-	-
Service Reliability Indices						
Saidi-Annual	2.23	1.51	3.95	0.10	10.33	1.84
Saifi-Annual	4.56	1.74	3.13	0.07	8.27	1.58
Caidi-Annual	0.49	0.86	1.26	1.40	1.25	1.16



Individual Electricity Distributors As of December 31st, 2007 (Alphabetically Listed)	Clinton Power Corporation	Cooperative Hydro Embrun Inc.	E.L.K. Energy Inc.	ENWIN Powerlines Ltd.	Eastern Ontario Power Inc. (CNP)	Enersource Hydro Mississauga Inc.
UNITIZED STATISTICS						
# of Customers per sq km of Service Area	409.75	376.40	487.23	706.31	53.82	640.12
# of Customers per km of Line	78.05	69.70	73.42	74.81	18.12	35.47
Average Revenue from Distribution						
Per Customer annually	\$ 429.47	\$ 324.01	\$ 338.27	\$ 538.65	\$ 539.70	\$ 634.11
Per Total kWh Purchased	\$ 0.023	\$ 0.021	\$ 0.014	\$ 0.015	\$ 0.029	\$ 0.015
Average Cost of Power						
Per Customer annually	\$ 1,374	\$ 1,134	\$ 1,727	\$ 2,175	\$ 1,453	\$ 3,106
Per Total kWh Purchased	\$ 0.070	\$ 0.071	\$ 0.068	\$ 0.060	\$ 0.070	\$ 0.069
Avg monthly kWh consumed per customer	1,627	1,329	2,107	3,019	1,732	3,742
Avg Peak (kW) per Customer	3.22	3.02	4.73	5.69	3.34	7.00
OM&A Per Customer	\$ 333.42	\$ 210.15	\$ 179.87	\$ 344.57	\$ 366.00	\$ 253.57
Net Income (Loss) Per Customer	\$ 48.27	\$ 61.45	\$ 68.80	\$ 185.67	\$ 8.14	\$ 75.21
Net Fixed Assets per Customer	\$ 640	\$ 994	\$ 786	\$ 2,067	\$ 2,946	\$ 2,211
SERVICE QUALITY INDICATORS						
% Completed within approved time						
Low Voltage Connections	100.00	100.00	96.10	99.40	100.00	97.70
High Voltage Connections	100.00	-	-	100.00	-	100.00
Cable Locates	100.00	100.00	95.50	99.70	85.90	99.90
Phone Calls	100.00	96.80	96.30	68.10	87.80	83.80
Annual Appointments	100.00	100.00	97.10	98.80	100.00	100.00
Annual Written Response	100.00	100.00	92.10	100.00	100.00	99.80
Emergency Urban Response	100.00	100.00	88.30	93.50	100.00	99.10
Emergency Rural Response	-	-	-	-	100.00	-
Service Reliability Indices						
Saidi-Annual	0.12	0.08	1.53	1.20	10.13	0.64
Saifi-Annual	8.00	0.02	1.17	2.11	5.78	0.78
Caidi-Annual	0.02	5.32	1.30	0.57	1.75	0.83



Individual Electricity Distributors As of December 31st, 2007 (Alphabetically Listed)	Erie Thames Powerlines Corporation	Espanola Regional Hydro Distribution Corporation	Essex Powerlines Corporation	Festival Hydro Inc.	Fort Frances Power Corporation	Grand Valley Energy Inc.
UNITIZED STATISTICS						
# of Customers per sq km of Service Area	7.56	33.49	267.20	437.77	148.62	677.00
# of Customers per km of Line	53.51	24.20	59.25	70.30	46.00	75.22
Average Revenue from Distribution						
Per Customer annually	\$ 525.22	\$ 403.15	\$ 364.11	\$ 500.89	\$ 371.06	\$ 351.40
Per Total kWh Purchased	\$ 0.018	\$ 0.021	\$ 0.019	\$ 0.016	\$ 0.017	\$ 0.025
Average Cost of Power						
Per Customer annually	\$ 2,031	\$ 1,407	\$ 1,604	\$ 2,313	\$ 1,594	\$ 1,072
Per Total kWh Purchased	\$ 0.068	\$ 0.071	\$ 0.079	\$ 0.070	\$ 0.070	\$ 0.075
Avg monthly kWh consumed per customer	2,503	1,652	1,692	2,744	1,891	1,186
Avg Peak (kW) per Customer	4.81	3.26	3.88	5.16	3.71	2.84
OM&A Per Customer	\$ 353.14	\$ 295.27	\$ 207.22	\$ 183.56	\$ 296.59	\$ 342.90
Net Income (Loss) Per Customer	\$ 53.62	\$ 9.29	\$ 46.57	\$ 79.75	\$ 14.50	\$ (29.68)
Net Fixed Assets per Customer	\$ 1,177	\$ 625	\$ 975	\$ 1,571	\$ 819	\$ 461
SERVICE QUALITY INDICATORS						
% Completed within approved time						
Low Voltage Connections	100.00	100.00	99.10	97.50	100.00	100.00
High Voltage Connections	100.00	-	-	-	-	-
Cable Locates	94.30	92.90	99.70	99.00	100.00	100.00
Phone Calls	96.30	73.90	78.70	92.70	100.00	100.00
Annual Appointments	100.00	100.00	99.40	97.00	100.00	100.00
Annual Written Response	100.00	60.00	96.90	100.00	100.00	100.00
Emergency Urban Response	100.00	100.00	100.00	-	100.00	-
Emergency Rural Response	-	-	-	-	-	-
Service Reliability Indices						
Saidi-Annual	3.16	0.63	3.59	4.13	0.30	4.05
Saifi-Annual	2.09	0.18	3.84	4.76	0.31	1.23
Caidi-Annual	1.51	3.40	0.93	0.87	0.95	3.30



Individual Electricity Distributors As of December 31st, 2007 (Alphabetically Listed)	Great Lakes Power Limited	Greater Sudbury Hydro Inc.	Grimsby Power Incorporated	Guelph Hydro Electric Systems Inc.	Haldimand County Hydro Inc.	Halton Hills Hydro Inc.
UNITIZED STATISTICS						
# of Customers per sq km of Service Area	0.81	N/A	146.15	513.12	16.53	72.19
# of Customers per km of Line	6.32	51.82	41.67	46.33	12.13	15.04
Average Revenue from Distribution						
Per Customer annually	\$ 1,144.06	\$ 489.50	\$ 353.07	\$ 516.21	\$ 595.55	\$ 438.50
Per Total kWh Purchased	\$ 0.070	\$ 0.023	\$ 0.020	\$ 0.015	\$ 0.034	\$ 0.017
Average Cost of Power						
Per Customer annually	\$ 1,262	\$ 1,562	\$ 1,379	\$ 2,306	\$ 1,378	\$ 1,859
Per Total kWh Purchased	\$ 0.071	\$ 0.071	\$ 0.074	\$ 0.067	\$ 0.074	\$ 0.073
Avg monthly kWh consumed per customer	1,489	1,828	1,554	2,859	1,556	2,112
Avg Peak (kW) per Customer	2.72	3.64	3.44	5.29	3.76	5.01
OM&A Per Customer	\$ 696.26	\$ 358.68	\$ 172.19	\$ 224.72	\$ 343.50	\$ 210.58
Net Income (Loss) Per Customer	\$ (1.60)	\$ (52.59)	\$ 40.48	\$ 50.71	\$ 83.55	\$ 52.46
Net Fixed Assets per Customer	\$ 4,991	\$ 1,375	\$ 1,116	\$ 1,790	\$ 1,470	\$ 1,448
SERVICE QUALITY INDICATORS						
% Completed within approved time						
Low Voltage Connections	98.60	100.00	100.00	100.00	87.70	100.00
High Voltage Connections	-	-	-	100.00	-	100.00
Cable Locates	88.20	100.00	98.90	100.00	97.80	99.80
Phone Calls	71.10	81.70	84.20	80.70	91.60	87.10
Annual Appointments	100.00	100.00	100.00	100.00	95.90	100.00
Annual Written Response	100.00	100.00	100.00	100.00	98.30	99.60
Emergency Urban Response	100.00	86.40	100.00	86.40	80.00	100.00
Emergency Rural Response	100.00	-	100.00	-	97.40	100.00
Service Reliability Indices						
Saidi-Annual	6.50	2.01	1.51	0.59	10.84	1.22
Saifi-Annual	2.55	1.53	1.28	1.02	3.95	0.66
Caidi-Annual	2.55	1.31	1.18	0.58	2.75	1.85



Individual Electricity Distributors As of December 31st, 2007 (Alphabetically Listed)	Hearst Power Distribution Company Limited	Horizon Utilities Corporation	Hydro 2000 Inc.	Hydro Hawkesbury Inc.	Hydro One Brampton Networks Inc.	Hydro One Networks Inc.
UNITIZED STATISTICS						
# of Customers per sq km of Service Area	29.81	545.76	128.78	678.50	468.50	1.81
# of Customers per km of Line	40.76	69.55	55.19	83.51	46.64	9.76
Average Revenue from Distribution						
Per Customer annually	\$ 160.58	\$ 380.87	\$ 223.12	\$ 212.46	\$ 510.37	\$ 871.46
Per Total kWh Purchased	\$ 0.004	\$ 0.014	\$ 0.010	\$ 0.006	\$ 0.016	\$ 0.042
Average Cost of Power						
Per Customer annually	\$ 2,798	\$ 1,696	\$ 1,785	\$ 2,635	\$ 2,190	\$ 1,674
Per Total kWh Purchased	\$ 0.070	\$ 0.061	\$ 0.076	\$ 0.072	\$ 0.070	\$ 0.075
Avg monthly kWh consumed per customer	3,340	2,314	1,951	3,067	2,620	1,864
Avg Peak (kW) per Customer	6.63	4.20	3.88	6.01	5.06	2.90
OM&A Per Customer	\$ 240.07	\$ 159.16	\$ 200.67	\$ 141.67	\$ 126.89	\$ 410.29
Net Income (Loss) Per Customer	\$ (52.71)	\$ 60.83	\$ (2.14)	\$ 28.35	\$ 82.70	\$ 75.08
Net Fixed Assets per Customer	\$ 354	\$ 1,297	\$ 324	\$ 354	\$ 2,350	\$ 3,363
SERVICE QUALITY INDICATORS						
% Completed within approved time						
Low Voltage Connections	100.00	99.70	100.00	100.00	100.00	93.00
High Voltage Connections	-	-	-	100.00	100.00	-
Cable Locates	100.00	98.20	100.00	100.00	97.80	92.90
Phone Calls	92.30	82.40	98.60	100.00	83.80	78.30
Annual Appointments	-	98.30	100.00	99.00	99.90	92.50
Annual Written Response	100.00	99.60	100.00	100.00	99.90	99.90
Emergency Urban Response	100.00	97.00	100.00	100.00	98.10	-
Emergency Rural Response	-	-	-	-	-	81.70
Service Reliability Indices						
Saidi-Annual	19.03	1.01	4.84	7.68	1.26	11.37
Saifi-Annual	5.77	1.59	1.44	2.49	1.85	4.08
Caidi-Annual	3.30	0.64	3.36	3.09	0.68	2.79



Individual Electricity Distributors As of December 31st, 2007 (Alphabetically Listed)	Hydro Ottawa Limited	Innisfil Hydro Distribution Systems Limited	Kenora Hydro Electric Corporation Ltd.	Kingston Electricity Distribution Limited	Kitchener-Wilmot Hydro Inc.	Lakefront Utilities Inc.
UNITIZED STATISTICS						
# of Customers per sq km of Service Area	259.97	48.36	235.08	832.25	204.45	335.44
# of Customers per km of Line	50.01	22.17	57.57	76.53	44.89	79.45
Average Revenue from Distribution						
Per Customer annually	\$ 447.31	\$ 482.16	\$ 376.59	\$ 394.86	\$ 413.16	\$ 393.10
Per Total kWh Purchased	\$ 0.017	\$ 0.030	\$ 0.019	\$ 0.015	\$ 0.018	\$ 0.012
Average Cost of Power						
Per Customer annually	\$ 1,910	\$ 1,182	\$ 1,385	\$ 1,899	\$ 1,723	\$ 2,246
Per Total kWh Purchased	\$ 0.070	\$ 0.071	\$ 0.068	\$ 0.069	\$ 0.072	\$ 0.068
Avg monthly kWh consumed per customer	2,284	1,388	1,704	2,290	1,997	2,742
Avg Peak (kW) per Customer	4.32	2.93	3.27	4.18	3.88	4.97
OM&A Per Customer	\$ 149.85	\$ 224.74	\$ 245.87	\$ 180.08	\$ 150.45	\$ 211.19
Net Income (Loss) Per Customer	\$ 64.94	\$ 67.67	\$ 48.82	\$ 62.55	\$ 67.88	\$ 38.98
Net Fixed Assets per Customer	\$ 1,662	\$ 1,209	\$ 1,352	\$ 914	\$ 1,630	\$ 1,141
SERVICE QUALITY INDICATORS						
% Completed within approved time						
Low Voltage Connections	95.80	97.60	100.00	94.60	91.00	100.00
High Voltage Connections	100.00	100.00	-	100.00	100.00	100.00
Cable Locates	97.50	92.00	100.00	100.00	100.00	100.00
Phone Calls	71.90	100.00	100.00	77.00	85.10	100.00
Annual Appointments	98.80	100.00	100.00	95.00	92.00	100.00
Annual Written Response	99.20	100.00	100.00	100.00	98.00	100.00
Emergency Urban Response	98.10	-	100.00	97.00	100.00	100.00
Emergency Rural Response	-	100.00	-	-	100.00	-
Service Reliability Indices						
Saidi-Annual	1.40	0.76	2.46	1.53	1.10	2.36
Saifi-Annual	1.21	1.25	2.89	1.43	0.94	2.15
Caidi-Annual	1.15	0.60	0.85	1.07	1.18	1.09



Individual Electricity Distributors As of December 31st, 2007 (Alphabetically Listed)	Lakeland Power Distribution Ltd.	London Hydro Inc.	Middlesex Power Distribution Corporation	Midland Power Utility Corporation	Milton Hydro Distribution Inc.	Newbury Power Inc.
UNITIZED STATISTICS						
# of Customers per sq km of Service Area	63.44	337.54	331.29	335.45	61.65	49.75
# of Customers per km of Line	25.73	54.47	65.63	58.34	27.38	49.75
Average Revenue from Distribution						
Per Customer annually	\$ 454.08	\$ 385.42	\$ 451.97	\$ 446.21	\$ 475.43	\$ 436.86
Per Total kWh Purchased	\$ 0.019	\$ 0.016	\$ 0.016	\$ 0.013	\$ 0.016	N/A
Average Cost of Power						
Per Customer annually	\$ 1,774	\$ 1,751	\$ 2,184	\$ 2,508	\$ 2,161	\$ 1,594
Per Total kWh Purchased	\$ 0.073	\$ 0.071	\$ 0.073	\$ 0.072	\$ 0.070	N/A
Avg monthly kWh consumed per customer	2,036	2,061	2,497	2,886	2,555	0
Avg Peak (kW) per Customer	3.89	4.06	4.86	5.48	4.87	0.00
OM&A Per Customer	\$ 225.13	\$ 178.29	\$ 208.14	\$ 260.05	\$ 196.50	\$ 299.15
Net Income (Loss) Per Customer	\$ 76.32	\$ 48.07	\$ 50.87	\$ 36.51	\$ 81.99	\$ 51.95
Net Fixed Assets per Customer	\$ 1,349	\$ 1,240	\$ 1,064	\$ 988	\$ 1,539	\$ 696
SERVICE QUALITY INDICATORS						
% Completed within approved time						
Low Voltage Connections	100.00	100.00	100.00	95.50	99.90	100.00
High Voltage Connections	100.00	-	-	-	-	-
Cable Locates	95.80	94.10	100.00	94.00	98.70	100.00
Phone Calls	99.90	69.70	-	99.90	80.10	100.00
Annual Appointments	98.90	-	100.00	95.30	100.00	100.00
Annual Written Response	99.40	99.80	100.00	100.00	100.00	100.00
Emergency Urban Response	100.00	98.90	100.00	100.00	100.00	-
Emergency Rural Response	100.00	-	-	-	94.40	100.00
Service Reliability Indices						
Saidi-Annual	11.75	1.69	0.83	1.64	1.52	4.57
Saifi-Annual	4.32	2.46	0.98	0.50	1.13	0.07
Caidi-Annual	2.72	0.69	0.84	3.29	1.34	68.69



Individual Electricity Distributors As of December 31st, 2007 (Alphabetically Listed)	Newmarket Hydro Ltd.	Niagara Falls Hydro Inc.	Niagara-on-the- Lake Hydro Inc.	Norfolk Power Distribution Inc.	North Bay Hydro Distribution Limited	Northern Ontario Wires Inc.
UNITIZED STATISTICS						
# of Customers per sq km of Service Area	421.53	152.88	58.48	26.90	71.64	218.29
# of Customers per km of Line	30.17	20.93	23.08	28.46	38.88	16.52
Average Revenue from Distribution						
Per Customer annually	\$ 508.42	\$ 554.43	\$ 614.48	\$ 519.30	\$ 446.46	\$ 393.21
Per Total kWh Purchased	\$ 0.021	\$ 0.022	\$ 0.027	\$ 0.025	\$ 0.019	\$ 0.018
Average Cost of Power						
Per Customer annually	\$ -	\$ 1,919	\$ 1,682	\$ 1,497	\$ 1,627	\$ 1,634
Per Total kWh Purchased	\$ -	\$ 0.071	\$ 0.069	\$ 0.069	\$ 0.064	\$ 0.071
Avg monthly kWh consumed per customer	2,040	2,246	2,020	1,803	2,110	1,918
Avg Peak (kW) per Customer	4.15	4.38	4.15	3.69	3.93	3.59
OM&A Per Customer	\$ 177.39	\$ 249.70	\$ 220.94	\$ 252.07	\$ 235.30	\$ 300.25
Net Income (Loss) Per Customer	\$ 115.38	\$ 67.26	\$ 116.47	\$ 64.52	\$ 57.36	\$ 28.77
Net Fixed Assets per Customer	\$ 1,505	\$ 1,794	\$ 2,475	\$ 2,216	\$ 1,238	\$ 575
SERVICE QUALITY INDICATORS						
% Completed within approved time						
Low Voltage Connections	98.00	82.40	100.00	-	100.00	100.00
High Voltage Connections	100.00	100.00	100.00	-	100.00	100.00
Cable Locates	95.30	98.90	100.00	-	92.60	100.00
Phone Calls	90.80	99.00	-	82.90	97.90	100.00
Annual Appointments	97.20	100.00	100.00	-	98.90	100.00
Annual Written Response	99.50	100.00	100.00	80.00	100.00	100.00
Emergency Urban Response	100.00	-	100.00	100.00	100.00	100.00
Emergency Rural Response	-	-	100.00	100.00	100.00	-
Service Reliability Indices						
Saidi-Annual	0.18	2.31	2.41	5.07	1.66	4.71
Saifi-Annual	0.17	2.00	2.07	1.71	1.77	3.37
Caidi-Annual	1.05	1.15	1.16	2.96	0.94	1.40



Individual Electricity Distributors As of December 31st, 2007 (Alphabetically Listed)	Oakville Hydro Electricity Distribution Inc.	Orangeville Hydro Limited	Orillia Power Distribution Corporation	Oshawa PUC Networks Inc.	Ottawa River Power Corporation	PUC Distribution Inc.
UNITIZED STATISTICS						
# of Customers per sq km of Service Area	418.76	633.38	468.44	342.15	292.29	95.06
# of Customers per km of Line	42.87	63.74	41.88	53.49	70.07	44.84
Average Revenue from Distribution						
Per Customer annually	\$ 537.39	\$ 429.91	\$ 513.18	\$ 388.35	\$ 351.09	\$ 392.61
Per Total kWh Purchased	\$ 0.021	\$ 0.018	\$ 0.020	\$ 0.017	\$ 0.018	\$ 0.018
Average Cost of Power						
Per Customer annually	\$ 1,959	\$ 1,777	\$ 1,868	\$ 1,553	\$ 1,462	\$ 1,399
Per Total kWh Purchased	\$ 0.073	\$ 0.070	\$ 0.071	\$ 0.066	\$ 0.074	\$ 0.062
Avg monthly kWh consumed per customer	2,231	2,100	2,198	1,947	1,655	1,892
Avg Peak (kW) per Customer	4.79	4.12	4.18	3.90	3.05	3.55
OM&A Per Customer	\$ 174.68	\$ 204.56	\$ 278.38	\$ 174.34	\$ 226.22	\$ 235.21
Net Income (Loss) Per Customer	\$ 35.15	\$ 63.86	\$ 50.81	\$ 73.97	\$ 30.11	\$ (21.57)
Net Fixed Assets per Customer	\$ 1,703	\$ 1,276	\$ 1,190	\$ 956	\$ 800	\$ 1,114
SERVICE QUALITY INDICATORS						
% Completed within approved time						
Low Voltage Connections	96.20	100.00	100.00	100.00	100.00	94.00
High Voltage Connections	-	100.00	-	100.00	-	100.00
Cable Locates	70.10	100.00	100.00	100.00	100.00	96.30
Phone Calls	79.50	100.00	98.10	66.80	99.90	83.00
Annual Appointments	99.80	100.00	100.00	100.00	100.00	100.00
Annual Written Response	99.50	100.00	100.00	100.00	100.00	99.30
Emergency Urban Response	-	100.00	100.00	100.00	100.00	96.40
Emergency Rural Response	-	-	-	-	-	-
Service Reliability Indices						
Saidi-Annual	1.26	3.00	5.36	1.76	2.19	3.28
Saifi-Annual	1.72	1.65	3.60	1.16	3.00	3.90
Caidi-Annual	0.73	1.82	1.49	1.51	0.73	0.84



Individual Electricity Distributors As of December 31st, 2007 (Alphabetically Listed)	Parry Sound Power Corporation	Peninsula West Utilities Limited	Peterborough Distribution Incorporated	Port Colborne Hydro Inc. (CNP)	PowerStream Inc.	Renfrew Hydro Inc.
UNITIZED STATISTICS						
# of Customers per sq km of Service Area	224.33	25.86	533.77	75.07	369.09	319.15
# of Customers per km of Line	26.29	13.89	62.68	29.55	38.10	75.44
Average Revenue from Distribution						
Per Customer annually	\$ 557.21	\$ 546.79	\$ 393.44	\$ 530.53	\$ 504.11	\$ 394.48
Per Total kWh Purchased	\$ 0.021	\$ 0.023	\$ 0.016	\$ 0.025	\$ 0.017	\$ 0.016
Average Cost of Power						
Per Customer annually	\$ 1,963	\$ 1,704	\$ 1,847	\$ 1,594	\$ 2,073	\$ 1,800
Per Total kWh Purchased	\$ 0.071	\$ 0.077	\$ 0.074	\$ 0.073	\$ 0.069	\$ 0.071
Avg monthly kWh consumed per customer	2,312	1,849	2,092	1,823	2,513	2,103
Avg Peak (kW) per Customer	4.28	3.90	4.07	3.80	5.13	4.20
OM&A Per Customer	\$ 329.66	\$ 292.45	\$ 191.86	\$ 480.76	\$ 181.41	\$ 239.82
Net Income (Loss) Per Customer	\$ 70.24	\$ 0.75	\$ 41.56	\$ (18.37)	\$ 89.53	\$ 30.30
Net Fixed Assets per Customer	\$ 1,234	\$ 1,390	\$ 1,348	\$ 923	\$ 1,957	\$ 1,000
SERVICE QUALITY INDICATORS						
% Completed within approved time						
Low Voltage Connections	100.00	98.80	99.80	100.00	97.70	100.00
High Voltage Connections	-	100.00	100.00	-	-	-
Cable Locates	100.00	95.60	100.00	100.00	94.60	100.00
Phone Calls	100.00	-	70.50	85.70	81.70	87.50
Annual Appointments	100.00	-	-	100.00	100.00	100.00
Annual Written Response	100.00	-	100.00	88.90	98.30	100.00
Emergency Urban Response	100.00	100.00	97.50	100.00	94.80	100.00
Emergency Rural Response	100.00	100.00	-	100.00	-	-
Service Reliability Indices						
Saidi-Annual	0.62	3.38	1.35	3.57	2.17	2.20
Saifi-Annual	3.94	2.79	1.69	4.95	1.54	1.44
Caidi-Annual	0.16	1.21	0.80	0.72	1.40	1.53



Individual Electricity Distributors As of December 31st, 2007 (Alphabetically Listed)	Rideau St. Lawrence Distribution Inc.	Sioux Lookout Hydro Inc.	St. Thomas Energy Inc.	Thunder Bay Hydro Electricity Distribution Inc.	Tillsonburg Hydro Inc.	Toronto Hydro- Electric System Limited
UNITIZED STATISTICS						
# of Customers per sq km of Service Area	325.78	5.14	482.39	129.71	273.79	1079.23
# of Customers per km of Line	67.40	13.05	66.33	42.60	42.95	69.24
Average Revenue from Distribution						
Per Customer annually	\$ 314.99	\$ 563.57	\$ 433.30	\$ 349.24	\$ 397.64	\$ 685.16
Per Total kWh Purchased	\$ 0.016	\$ 0.017	\$ 0.019	\$ 0.017	\$ 0.011	\$ 0.018
Average Cost of Power						
Per Customer annually	\$ 1,537	\$ 2,333	\$ 1,658	\$ 1,443	\$ 2,583	\$ 2,708
Per Total kWh Purchased	\$ 0.072	\$ 0.068	\$ 0.070	\$ 0.066	\$ 0.071	\$ 0.069
Avg monthly kWh consumed per customer	1,784	2,841	1,973	1,812	3,020	3,270
Avg Peak (kW) per Customer	3.97	5.63	3.87	3.39	6.02	6.13
OM&A Per Customer	\$ 234.83	\$ 414.84	\$ 222.75	\$ 243.98	\$ 246.58	\$ 230.61
Net Income (Loss) Per Customer	\$ 32.28	\$ 18.45	\$ 44.49	\$ 5.85	\$ 58.91	\$ 96.51
Net Fixed Assets per Customer	\$ 606	\$ 1,798	\$ 1,176	\$ 1,229	\$ 901	\$ 2,622
SERVICE QUALITY INDICATORS						
% Completed within approved time						
Low Voltage Connections	100.00	100.00	100.00	95.20	100.00	96.40
High Voltage Connections	-	-	-	100.00	-	99.00
Cable Locates	100.00	100.00	93.80	92.20	100.00	97.30
Phone Calls	99.20	100.00	79.40	94.60	-	76.60
Annual Appointments	97.90	100.00	97.60	100.00	-	99.20
Annual Written Response	100.00	100.00	95.20	100.00	-	88.20
Emergency Urban Response	-	100.00	100.00	98.80	100.00	90.10
Emergency Rural Response	100.00	100.00	-	100.00	-	-
Service Reliability Indices						
Saidi-Annual	0.68	4.41	0.49	2.00	4.45	1.95
Saifi-Annual	0.22	2.38	0.38	3.30	3.82	2.27
Caidi-Annual	3.10	1.85	1.29	0.61	1.17	0.86



Individual Electricity Distributors As of December 31st, 2007 (Alphabetically Listed)	Veridian Connections Inc.	Wasaga Distribution Inc.	Waterloo North Hydro Inc.	Welland Hydro- Electric System Corp.	Wellington North Power Inc.	West Coast Huron Energy Inc.
UNITIZED STATISTICS						
# of Customers per sq km of Service Area	170.93	185.43	73.75	248.71	249.00	481.63
# of Customers per km of Line	52.87	49.39	32.56	48.83	47.75	59.28
Average Revenue from Distribution						
Per Customer annually	\$ 422.47	\$ 309.42	\$ 515.93	\$ 358.36	\$ 394.18	\$ 432.74
Per Total kWh Purchased	\$ 0.018	\$ 0.030	\$ 0.019	\$ 0.016	\$ 0.014	\$ 0.011
Average Cost of Power						
Per Customer annually	\$ 1,757	\$ 724	\$ 1,893	\$ 1,644	\$ 1,731	\$ 1,703
Per Total kWh Purchased	\$ 0.072	\$ 0.068	\$ 0.066	\$ 0.071	\$ 0.059	\$ 0.044
Avg monthly kWh consumed per customer	2,031	884	2,394	1,926	2,436	3,249
Avg Peak (kW) per Customer	3.87	1.85	4.68	3.95	4.37	6.23
OM&A Per Customer	\$ 162.85	\$ 156.93	\$ 175.42	\$ 210.87	\$ 285.98	\$ 312.38
Net Income (Loss) Per Customer	\$ 82.25	\$ 41.80	\$ 95.40	\$ 4.57	\$ (2.21)	\$ 61.25
Net Fixed Assets per Customer	\$ 1,267	\$ 739	\$ 1,882	\$ 938	\$ 1,022	\$ 971
SERVICE QUALITY INDICATORS						
% Completed within approved time						
Low Voltage Connections	99.50	100.00	100.00	99.30	100.00	100.00
High Voltage Connections	100.00	100.00	100.00	-	-	-
Cable Locates	99.30	100.00	99.10	99.80	99.20	100.00
Phone Calls	56.70	100.00	86.80	99.70	99.90	100.00
Annual Appointments	100.00	100.00	99.80	100.00	100.00	100.00
Annual Written Response	100.00	100.00	99.40	100.00	100.00	99.60
Emergency Urban Response	100.00	91.40	90.30	100.00	100.00	100.00
Emergency Rural Response	100.00	100.00	98.00	-	-	-
Service Reliability Indices						
Saidi-Annual	1.94	1.90	0.91	4.91	0.32	3.63
Saifi-Annual	1.81	1.87	6.65	5.31	0.33	2.91
Caidi-Annual	1.07	1.02	0.14	0.92	0.97	1.25



Individual Electricity Distributors As of December 31st, 2007 (Alphabetically Listed)	West Nipissing Energy Services Ltd.	West Perth Power Inc.	Westario Power Inc.	Whitby Hydro Electric Corporation	Woodstock Hydro Services Inc.
UNITIZED STATISTICS					
# of Customers per sq km of Service Area	364.89	339.00	434.63	260.39	465.84
# of Customers per km of Line	86.42	N/A	48.96	37.49	53.88
Average Revenue from Distribution					
Per Customer annually	\$ 275.99	\$ 400.54	\$ 405.87	\$ 489.78	\$ 503.33
Per Total kWh Purchased	\$ 0.016	\$ 0.013	\$ 0.019	\$ 0.022	\$ 0.018
Average Cost of Power					
Per Customer annually	\$ 1,388	\$ 2,437	\$ 1,488	\$ 1,773	\$ 1,940
Per Total kWh Purchased	\$ 0.071	\$ 0.074	\$ 0.067	\$ 0.074	\$ 0.068
Avg monthly kWh consumed per customer	1,629	2,753	1,841	1,984	2,369
Avg Peak (kW) per Customer	3.11	5.14	3.44	4.00	4.59
OM&A Per Customer	\$ 156.92	\$ 262.06	\$ 212.93	\$ 228.08	\$ 226.42
Net Income (Loss) Per Customer	\$ 77.01	\$ 27.52	\$ 44.85	\$ 24.11	\$ 72.40
Net Fixed Assets per Customer	\$ 485	\$ 825	\$ 1,305	\$ 1,528	\$ 1,242
SERVICE QUALITY INDICATORS					
% Completed within approved time					
Low Voltage Connections	100.00	100.00	96.90	100.00	99.50
High Voltage Connections	-	-	-	100.00	-
Cable Locates	100.00	100.00	97.00	95.00	100.00
Phone Calls	100.00	100.00	93.20	94.90	98.90
Annual Appointments	100.00	-	100.00	100.00	100.00
Annual Written Response	100.00	-	100.00	100.00	100.00
Emergency Urban Response	100.00	100.00	92.10	100.00	100.00
Emergency Rural Response	-	-	-	100.00	-
Service Reliability Indices					
Saidi-Annual	0.24	3.54	0.30	0.83	1.56
Saifi-Annual	0.15	2.25	0.92	1.05	1.80
Caidi-Annual	1.61	1.57	0.33	0.79	0.87



Individual Electricity Distributors As of December 31st, 2007 (Alphabetically Listed)	Atikokan Hydro Inc.	Barrie Hydro Distribution Inc.	Bluewater Power Distribution Corporation	Brant County Power Inc.	Brantford Power Inc.	Burlington Hydro Inc.
Statistics by Customer Class						
Residential Customers						
Number of Customers	1,450	61,561	31,389	7,933	33,526	55,919
kWh Billed	11,858,778	548,016,272	264,836,003	81,004,255	298,531,289	567,063,035
Distribution Revenue	\$ 588,860	\$ 17,567,935	\$ 8,147,503	\$ 2,869,873	\$ 8,609,774	\$ 16,571,242
kWh Billed per customer	8,178	8,902	8,437	10,211	8,904	10,141
Distribution Revenue per Customer	\$ 406	\$ 285	\$ 260	\$ 362	\$ 257	\$ 296
General Service <50kW Customers						
Number of Customers	240	6,195	4,117	1,279	3,171	4,845
kWh Billed	6,123,903	203,861,889	121,176,417	34,345,190	111,544,249	188,657,874
Distribution Revenue	\$ 197,724	\$ 3,939,240	\$ 2,636,981	\$ 925,897	\$ 1,543,405	\$ 3,949,227
kWh Billed per customer	25,516	32,907	29,433	26,853	35,176	38,939
Distribution Revenue per Customer	\$ 824	\$ 636	\$ 641	\$ 724	\$ 487	
General Service >50kW and Larger User (>5000kW) Customers						
Number of General Service Customers	21	779	395	127	411	1,012
Number of Larger User	0	0	5	0	0	0
kWh Billed	24,958,288	736,878,948	734,745,727	173,372,031	630,054,235	1,011,078,364
Distribution Revenue	\$ 57,529	\$ 6,019,063	\$ 4,401,136	\$ 1,952,929	\$ 5,190,247	\$ 6,620,032
kWh Billed per customer	1,188,490	945,929	1,836,864	1,365,134	1,532,979	999,089
Distribution Revenue per Customer	\$ 2,739	\$ 7,727	\$ 11,003	\$ 15,377	\$ 12,628	\$ 6,542



Individual Electricity Distributors As of December 31st, 2007 (Alphabetically Listed)	COLLUS Power Corp.	Cambridge and North Dumfries Hydro Inc.	Canadian Niagara Power Inc.- Fort Erie	Centre Wellington Hydro Ltd.	Chapleau Public Utilities Corporation	Chatham-Kent Hydro Inc.
Statistics by Customer Class						
Residential Customers						
Number of Customers	12,535	43,623	14,073	5,510	1,159	28,391
kWh Billed	113,589,579	395,062,443	114,221,401	46,699,194	15,018,918	236,072,777
Distribution Revenue	\$ 3,187,790	\$ 10,123,678	\$ 4,111,901	\$ 1,489,356	\$ 417,484	\$ 8,066,636
kWh Billed per customer	9,062	9,056	8,116	8,475	12,959	8,315
Distribution Revenue per Customer	\$ 254	\$ 232	\$ 292	\$ 270	\$ 360	\$ 284
General Service <50kW Customers						
Number of Customers	1,667	4,602	1,280	673	165	3,190
kWh Billed	46,098,397	172,674,757	37,915,186	23,056,640	5,446,180	101,917,289
Distribution Revenue	\$ 734,350	\$ 2,917,576	\$ 1,083,312	\$ 475,110	\$ 105,249	\$ 2,189,410
kWh Billed per customer	27,654	37,522	29,621	34,259	33,007	31,949
Distribution Revenue per Customer	\$ 441	\$ 634	\$ 846	\$ 706	\$ 638	\$ 686
General Service >50kW and Larger User (>5000kW) Customers						
Number of General Service Customers	121	716	141	56	14	424
Number of Larger User	2	3	0	0	0	2
kWh Billed	168,973,751	992,430,556	142,072,760	88,775,292	7,740,511	499,499,567
Distribution Revenue	\$ 671,750	\$ 7,827,214	\$ 2,748,785	\$ 455,167	\$ 44,863	\$ 3,514,229
kWh Billed per customer	1,373,770	1,380,293	1,007,608	1,585,273	552,894	1,172,534
Distribution Revenue per Customer	\$ 5,461	\$ 10,886	\$ 19,495	\$ 8,128	\$ 3,205	\$ 8,249



Individual Electricity Distributors As of December 31st, 2007 (Alphabetically Listed)	Clinton Power Corporation	Cooperative Hydro Embrun Inc.	E.L.K. Energy Inc.	ENWIN Powerlines Ltd.	Eastern Ontario Power (CNP)	Enersource Hydro Mississauga Inc.
Statistics by Customer Class						
Residential Customers						
Number of Customers	1,393	1,689	9,539	76,496	3,100	162,775
kWh Billed	12,522,951	19,386,628	94,171,770	664,998,752	29,640,947	1,632,816,129
Distribution Revenue	\$ 313,942	\$ 416,467	\$ 891,586	\$ 20,643,264	\$ 790,578	\$ 43,668,341
kWh Billed per customer	8,990	11,478	9,872	8,693	9,562	10,031
Distribution Revenue per Customer	\$ 225	\$ 247	\$ 93	\$ 270	\$ 255	\$ 268
General Service <50kW Customers						
Number of Customers	229	181	1,071	7,057	417	16,430
kWh Billed	6,067,865	5,139,158	27,843,723	241,042,363	13,983,182	702,940,000
Distribution Revenue	\$ 122,845	\$ 95,376	\$ 86,316	\$ 5,626,924	\$ 377,330	\$ 16,853,549
kWh Billed per customer	26,497	28,393	25,998	34,156	33,533	42,784
Distribution Revenue per Customer	\$ 536	\$ 527	\$ 81	\$ 797	\$ 905	\$ 1,026
General Service >50kW and Larger User (>5000kW) Customers						
Number of General Service Customers	17	12	109	1,194	35	4,501
Number of Larger User	0	0	0	10	0	9
kWh Billed	12,017,931	4,158,885	132,918,074	1,662,842,435	21,839,393	5,902,348,225
Distribution Revenue	\$ 174,399	\$ 72,268	\$ 615,349	\$ 16,483,297	\$ 608,754	\$ 53,157,942
kWh Billed per customer	706,937	346,574	1,219,432	1,381,098	623,983	1,308,725
Distribution Revenue per Customer	\$ 10,259	\$ 6,022	\$ 5,645	\$ 13,690	\$ 17,393	\$ 11,787



Individual Electricity Distributors As of December 31st, 2007 (Alphabetically Listed)	Erie Thames Powerlines Corporation	Espanola Regional Hydro Distribution Corporation	Essex Powerlines Corporation	Festival Hydro Inc.	Fort Frances Power Corporation	Grand Valley Energy Inc.
Statistics by Customer Class						
Residential Customers						
Number of Customers	12,534	2,831	25,579	17,060	3,380	592
kWh Billed	116,256,740	32,040,530	280,966,066	143,658,315	39,011,690	5,786,652
Distribution Revenue	\$ 3,305,948	\$ 714,516	\$ 6,812,627	\$ 5,112,770	\$ 3,074,838	\$ 155,733
kWh Billed per customer	9,275	11,318	10,984	8,421	11,542	9,775
Distribution Revenue per Customer	\$ 264	\$ 252	\$ 266	\$ 300	\$ 910	\$ 263
General Service <50kW Customers						
Number of Customers	1,492	469	1,996	1,990	437	78
kWh Billed	36,865,621	14,601,478	75,434,849	70,364,809	16,100,811	1,590,371
Distribution Revenue	\$ 1,019,060	\$ 428,456	\$ 557,805	\$ 1,687,427	\$ 1,201,334	\$ 35,692
kWh Billed per customer	24,709	31,133	37,793	35,359	36,844	20,389
Distribution Revenue per Customer	\$ 683	\$ 914	\$ 279	\$ 848	\$ 2,749	\$ 458
General Service >50kW and Larger User (>5000kW) Customers						
Number of General Service Customers	154	16	214	210	47	7
Number of Larger User	1	0	0	2	0	0
kWh Billed	254,986,867	16,420,001	203,745,482	397,763,768	27,514,669	1,978,364
Distribution Revenue	\$ 2,237,778	\$ 59,285	\$ 2,172,880	\$ 2,215,905	\$ 1,867,470	\$ 30,337
kWh Billed per customer	1,645,077	1,026,250	952,082	1,876,244	585,418	282,623
Distribution Revenue per Customer	\$ 14,437	\$ 3,705	\$ 10,154	\$ 10,452	\$ 39,733	\$ 4,334



Individual Electricity Distributors As of December 31st, 2007 (Alphabetically Listed)	Great Lakes Power Limited	Greater Sudbury Hydro Inc.	Grimsby Power Incorporated	Guelph Hydro Electric Systems Inc.	Haldimand County Hydro Inc.	Halton Hills Hydro Inc.
Statistics by Customer Class						
Residential Customers						
Number of Customers	10,539	38,853	8,946	43,369	18,139	18,337
kWh Billed	92,360,867	376,970,987	86,770,666	358,331,164	173,795,327	208,287,499
Distribution Revenue	\$ 6,848,693	\$ 11,551,594	\$ 2,364,468	\$ 13,363,823	\$ 7,822,874	\$ 4,788,491
kWh Billed per customer	8,764	9,702	9,699	8,262	9,581	11,359
Distribution Revenue per Customer	\$ 650	\$ 297	\$ 264	\$ 308	\$ 431	\$ 261
General Service <50kW Customers						
Number of Customers	932	3,816	743	3,612	2,424	1,686
kWh Billed	29,212,744	138,951,508	18,914,613	149,723,637	59,036,936	51,348,403
Distribution Revenue	\$ 1,279,758	\$ 3,613,727	\$ 408,003	\$ 3,643,577	\$ 1,830,084	\$ 970,628
kWh Billed per customer	31,344	36,413	25,457	41,452	24,355	30,456
Distribution Revenue per Customer	\$ 1,373	\$ 947	\$ 549	\$ 1,009	\$ 755	\$ 576
General Service >50kW and Larger User (>5000kW) Customers						
Number of General Service Customers	50	498	103	735	135	191
Number of Larger User	1	0	0	4	0	0
kWh Billed	80,642,253	375,991,318	69,535,200	1,119,593,933	124,717,255	260,391,322
Distribution Revenue	\$ 1,070,263	\$ 5,452,448	\$ 473,226	\$ 6,225,419	\$ 1,949,589	\$ 2,500,926
kWh Billed per customer	1,581,221	755,003	675,099	1,515,012	923,832	1,363,305
Distribution Revenue per Customer	\$ 20,986	\$ 10,949	\$ 4,594	\$ 8,424	\$ 14,441	\$ 13,094



Individual Electricity Distributors As of December 31st, 2007 (Alphabetically Listed)	Hearst Power Distribution Company Limited	Horizon Utilities Corporation	Hydro 2000 Inc.	Hydro Hawkesbury Inc.	Hydro One Brampton Networks Inc.	Hydro One Networks Inc.
Statistics by Customer Class						
Residential Customers						
Number of Customers	2,330	210,358	1,001	4,775	117,024	1,064,172
kWh Billed	28,317,089	1,666,789,557	15,036,848	56,403,314	1,141,600,000	12,620,681,000
Distribution Revenue	\$ 264,094	\$ 60,585,358	\$ 168,316	\$ 447,537	\$ 33,319,120	\$ 575,965,000
kWh Billed per customer	12,153	7,924	15,022	11,812	9,755	11,860
Distribution Revenue per Customer	\$ 113	\$ 288	\$ 168	\$ 94	\$ 285	\$ 541
General Service <50kW Customers						
Number of Customers	396	19,969	146	573	7,440	109,157
kWh Billed	13,362,077	633,786,108	4,950,140	22,296,434	314,700,000	8,505,587,000
Distribution Revenue	\$ 141,673	\$ 9,870,639	\$ 48,046	\$ 94,421	\$ 7,481,580	\$ 252,607,000
kWh Billed per customer	33,743	31,739	33,905	38,912	42,298	77,921
Distribution Revenue per Customer	\$ 358	\$ 494	\$ 329	\$ 165	\$ 1,006	\$ 2,314
General Service >50kW and Larger User (>5000kW) Customers						
Number of General Service Customers	46	2,154	12	79	1,556	0
Number of Larger User	0	12	0	1	6	31
kWh Billed	68,756,903	3,941,669,564	4,927,790	122,930,449	2,484,000,000	1,793,212,000
Distribution Revenue	\$ 260,992	\$ 13,978,400	\$ 18,062	\$ 168,970	\$ 19,686,809	\$ 9,025,000
kWh Billed per customer	1,494,715	1,819,792	410,649	1,536,631	1,590,269	57,845,548
Distribution Revenue per Customer	\$ 5,674	\$ 6,454	\$ 1,505	\$ 2,112	\$ 12,604	-



Individual Electricity Distributors As of December 31st, 2007 (Alphabetically Listed)	Hydro Ottawa Limited	Innisfil Hydro Distribution Systems Limited	Kenora Hydro Electric Corporation Ltd.	Kingston Electricity Distribution Limited	Kitchener-Wilmot Hydro Inc.	Lakefront Utilities Inc.
Statistics by Customer Class						
Residential Customers						
Number of Customers	260,359	13,132	4,840	22,839	74,392	7,878
kWh Billed	2,234,039,085	156,705,342	39,142,088	221,960,966	660,550,766	74,685,958
Distribution Revenue	\$ 70,800,352	\$ 5,133,681	\$ 1,164,235	\$ 5,303,432	\$ 16,566,324	\$ 1,524,347
kWh Billed per customer	8,581	11,933	8,087	9,719	8,879	9,480
Distribution Revenue per Customer	\$ 272	\$ 391	\$ 241	\$ 232	\$ 223	\$ 193
General Service <50kW Customers						
Number of Customers	23,292	916	736	3,443	7,198	1,044
kWh Billed	751,685,326	30,546,381	26,718,970	99,060,144	241,373,902	36,027,973
Distribution Revenue	\$ 17,427,075	\$ 678,799	\$ 338,015	\$ 1,940,423	\$ 4,436,241	\$ 577,436
kWh Billed per customer	32,272	33,348	36,303	28,771	33,533	34,510
Distribution Revenue per Customer	\$ 748	\$ 741	\$ 459	\$ 564	\$ 616	\$ 553
General Service >50kW and Larger User (>5000kW) Customers						
Number of General Service Customers	3,344	72	66	347	1,005	135
Number of Larger User	11	0	0	3	4	0
kWh Billed	4,503,495,756	41,439,949	43,467,432	397,951,899	1,070,798,596	179,878,686
Distribution Revenue	\$ 42,514,193	\$ 632,138	\$ 405,914	\$ 2,729,952	\$ 11,363,041	\$ 985,087
kWh Billed per customer	1,342,324	575,555	658,597	1,137,005	1,061,247	1,332,435
Distribution Revenue per Customer	\$ 12,672	\$ 8,780	\$ 6,150	\$ 7,800	\$ 11,262	\$ 7,297



Individual Electricity Distributors As of December 31st, 2007 (Alphabetically Listed)	Lakeland Power Distribution Ltd.	London Hydro Inc.	Middlesex Power Distribution Corporation	Midland Power Utility Corporation	Milton Hydro Distribution Inc.	Newbury Power Inc.
Statistics by Customer Class						
Residential Customers						
Number of Customers	7,457	128,587	6,176	5,865	20,305	166
kWh Billed	78,209,625	1,117,283,048	57,541,659	47,886,438	218,633,202	463,355
Distribution Revenue	\$ 2,400,180	\$ 32,524,237	\$ 2,195,363	\$ 1,729,346	\$ 6,054,708	\$ 185,812
kWh Billed per customer	10,488	8,689	9,317	8,165	10,767	2,791
Distribution Revenue per Customer	\$ 322	\$ 253	\$ 355	\$ 295	\$ 298	\$ 1,119
General Service <50kW Customers						
Number of Customers	1,580	11,912	687	736	2,217	30
kWh Billed	45,790,960	423,241,986	20,879,379	27,583,998	72,354,607	106,678
Distribution Revenue	\$ 1,014,852	\$ 8,714,526	\$ 325,466	\$ 489,240	\$ 1,519,123	\$ 38,651
kWh Billed per customer	28,982	35,531	30,392	37,478	32,636	3,556
Distribution Revenue per Customer	\$ 642	\$ 732	\$ 474	\$ 665	\$ 685	\$ 1,288
General Service >50kW and Larger User (>5000kW) Customers						
Number of General Service Customers	98	1,603	93	108	287	3
Number of Larger User	0	3	1	0	2	0
kWh Billed	89,723,775	1,823,308,787	118,712,797	147,933,603	398,358,119	499,607
Distribution Revenue	\$ 1,138,904	\$ 10,208,156	\$ 516,356	\$ 564,874	\$ 2,655,822	\$ 156,792
kWh Billed per customer	915,549	1,135,311	1,262,902	1,369,756	1,378,402	166,536
Distribution Revenue per Customer	\$ 11,621	\$ 6,356	\$ 5,493	\$ 5,230	\$ 9,190	\$ 52,264



Individual Electricity Distributors As of December 31st, 2007 (Alphabetically Listed)	Newmarket - Tay Power Distribution Ltd.	Niagara Falls Hydro Inc.	Niagara-on-the- Lake Hydro Inc.	Norfolk Power Distribution Inc.	North Bay Hydro Distribution Limited	Northern Ontario Wires Inc.
Statistics by Customer Class						
Residential Customers						
Number of Customers	27,862	30,622	6,424	16,378	20,726	5,249
kWh Billed	270,904,453	272,359,244	65,561,722	142,543,771	213,131,701	43,226,412
Distribution Revenue	\$ 8,085,538	\$ 15,256,878	\$ 2,165,327	\$ 6,459,105	\$ 4,844,727	\$ 1,402,866
kWh Billed per customer	9,723	8,894	10,206	8,703	10,283	8,235
Distribution Revenue per Customer	\$ 290	\$ 498	\$ 337	\$ 394	\$ 234	\$ 267
General Service <50kW Customers						
Number of Customers	2,940	3,260	1,239	2,097	2,647	793
kWh Billed	95,991,502	90,194,143	34,044,046	65,086,339	90,050,617	21,229,101
Distribution Revenue	\$ 2,336,211	\$ 5,386,242	\$ 1,048,489	\$ 1,875,217	\$ 1,692,624	\$ 384,575
kWh Billed per customer	32,650	27,667	27,477	31,038	34,020	26,771
Distribution Revenue per Customer	\$ 795	\$ 1,652	\$ 846	\$ 894	\$ 639	\$ 485
General Service >50kW and Larger User (>5000kW) Customers						
Number of General Service Customers	391	822	115	166	269	70
Number of Larger User	0	0	0	0	0	0
kWh Billed	875,286	566,886,777	78,914,198	171,873,812	263,383,205	66,571,600
Distribution Revenue	\$ 4,296,535	\$ 31,383,672	\$ 1,341,452	\$ 1,426,399	\$ 2,121,184	\$ 423,575
kWh Billed per customer	2,239	689,643	686,210	1,035,384	979,120	951,023
Distribution Revenue per Customer	\$ 10,989	\$ 38,180	\$ 11,665	\$ 8,593	\$ 7,885	\$ 6,051



Individual Electricity Distributors As of December 31st, 2007 (Alphabetically Listed)	Oakville Hydro Electricity Distribution Inc.	Orangeville Hydro Limited	Orillia Power Distribution Corporation	Oshawa PUC Networks Inc.	Ottawa River Power Corporation	PUC Distribution Inc.
Statistics by Customer Class						
Residential Customers						
Number of Customers	53,646	8,995	11,102	46,679	8,625	28,723
kWh Billed	592,214,968	80,135,717	109,590,116	495,109,283	75,938,194	338,874,337
Distribution Revenue	\$ 17,299,707	\$ 2,762,645	\$ 3,117,158	\$ 8,815,853	\$ 1,950,100	\$ 6,215,178
kWh Billed per customer	11,039	8,909	9,871	10,607	8,804	11,798
Distribution Revenue per Customer	\$ 322	\$ 307	\$ 281	\$ 189	\$ 226	\$ 216
General Service <50kW Customers						
Number of Customers	5,430	1,014	1,384	3,765	1,469	3,194
kWh Billed	185,942,438	35,860,541	50,139,910	138,513,337	37,226,751	95,089,450
Distribution Revenue	\$ 4,151,525	\$ 681,564	\$ 1,214,194	\$ 2,848,433	\$ 669,132	\$ 2,187,304
kWh Billed per customer	34,244	35,365	36,228	36,790	25,342	29,771
Distribution Revenue per Customer	\$ 765	\$ 672	\$ 877	\$ 757	\$ 456	\$ 685
General Service >50kW and Larger User (>5000kW) Customers						
Number of General Service Customers	806	125	162	534	136	595
Number of Larger User	1	0	0	2	0	0
kWh Billed	829,817,761	129,540,207	158,476,653	547,305,508	47,558,139	259,930,403
Distribution Revenue	\$ 7,500,404	\$ 648,514	\$ 1,776,769	\$ 5,208,306	\$ 790,828	\$ 3,256,376
kWh Billed per customer	1,028,275	1,036,322	978,251	1,021,092	349,692	436,858
Distribution Revenue per Customer	\$ 9,294	\$ 5,188	\$ 10,968	\$ 9,717	\$ 5,815	\$ 5,473



Individual Electricity Distributors As of December 31st, 2007 (Alphabetically Listed)	Parry Sound Power Corporation	Peninsula West Utilities Limited	Peterborough Distribution Incorporated	Port Colborne (CNP)	PowerStream Inc.	Renfrew Hydro Inc.
Statistics by Customer Class						
Residential Customers						
Number of Customers	2,696	13,703	30,138	8,131	207,783	3,559
kWh Billed	34,279,947	151,551,103	286,683,602	65,276,304	2,039,498,572	31,007,901
Distribution Revenue	\$ 977,163	\$ 4,178,394	\$ 7,493,047	\$ 2,501,362	\$ 54,987,411	\$ 868,920
kWh Billed per customer	12,715	11,060	9,512	8,028	9,816	8,713
Distribution Revenue per Customer	\$ 362	\$ 305	\$ 249	\$ 308	\$ 265	\$ 244
General Service <50kW Customers						
Number of Customers	604	1,674	3,641	949	24,726	524
kWh Billed	17,128,062	43,526,768	125,865,952	26,498,395	804,568,031	13,918,674
Distribution Revenue	\$ 339,181	\$ 985,740	\$ 2,042,750	\$ 600,023	\$ 18,093,527	\$ 256,242
kWh Billed per customer	28,358	26,002	34,569	27,922	32,539	26,562
Distribution Revenue per Customer	\$ 562	\$ 589	\$ 561	\$ 632	\$ 732	\$ 489
General Service >50kW and Larger User (>5000kW) Customers						
Number of General Service Customers	65	114	380	79	3,710	66
Number of Larger User	0	0	2	0	1	0
kWh Billed	37,433,580	152,886,206	399,754,672	99,127,057	3,945,332,051	53,203,197
Distribution Revenue	\$ 454,626	\$ 2,878,752	\$ 2,622,430	\$ 1,440,524	\$ 36,046,123	\$ 343,477
kWh Billed per customer	575,901	1,341,107	1,046,478	1,254,773	1,063,145	806,109
Distribution Revenue per Customer	\$ 6,994	\$ 25,252	\$ 6,865	\$ 18,234	\$ 9,713	\$ 5,204



Individual Electricity Distributors As of December 31st, 2007 (Alphabetically Listed)	Rideau St. Lawrence Distribution Inc.	Sioux Lookout Hydro Inc.	St. Thomas Energy Inc.	Thunder Bay Hydro Electricity Distribution Inc.	Tillsonburg Hydro Inc.	Toronto Hydro- Electric System Limited
Statistics by Customer Class						
Residential Customers						
Number of Customers	4,967	2,310	14,064	44,460	5,844	601,515
kWh Billed	45,086,486	32,814,076	119,400,889	344,508,404	52,893,412	5,332,356,184
Distribution Revenue	\$ 934,540	\$ 835,050	\$ 3,799,759	\$ -	\$ 1,672,200	\$ 180,070,458
kWh Billed per customer	9,077	14,205	8,490	7,749	9,051	8,865
Distribution Revenue per Customer	\$ 188	\$ 361	\$ 270	\$ -	\$ 286	\$ 299
General Service <50kW Customers						
Number of Customers	832	403	1,669	4,436	643	66,245
kWh Billed	22,682,803	15,350,067	40,397,113	141,535,564	26,985,819	2,506,447,083
Distribution Revenue	\$ 222,433	\$ 277,095	\$ 906,390	\$ -	\$ 443,946	\$ 59,722,526
kWh Billed per customer	27,263	38,089	24,204	31,906	41,969	37,836
Distribution Revenue per Customer	\$ 267	\$ 688	\$ 543	\$ -	\$ 690	\$ 902
General Service >50kW and Larger User (>5000kW) Customers						
Number of General Service Customers	65	41	185	525	83	12,104
Number of Larger User	0	0	1	0	1	49
kWh Billed	44,734,117	42,025,394	203,995,755	527,884,481	156,585,162	17,810,319,589
Distribution Revenue	\$ 316,912	\$ 319,776	\$ 1,325,360	\$ -	\$ 2,302,209	\$ 201,015,611
kWh Billed per customer	688,217	1,025,010	1,096,751	1,005,494	1,864,109	1,465,508
Distribution Revenue per Customer	\$ 4,876	\$ 7,799	\$ 7,126	\$ -	\$ 27,407	\$ 16,540



Individual Electricity Distributors As of December 31st, 2007 (Alphabetically Listed)	Veridian Connections Inc.	Wasaga Distribution Inc.	Waterloo North Hydro Inc.	Welland Hydro- Electric System Corp.	Wellington North Power Inc.	West Coast Huron Energy Inc.
Statistics by Customer Class						
Residential Customers						
Number of Customers	98,952	10,481	43,750	19,512	2,978	3,290
kWh Billed	960,984,164	78,007,343	405,071,611	162,857,785	25,027,983	26,672,783
Distribution Revenue	\$ 26,543,555	\$ 2,556,898	\$ 13,271,369	\$ 4,890,882	\$ 630,261	\$ 765,738
kWh Billed per customer	9,712	7,443	9,259	8,347	8,404	8,107
Distribution Revenue per Customer	\$ 268	\$ 244	\$ 303	\$ 251	\$ 212	\$ 233
General Service <50kW Customers						
Number of Customers	9,195	795	5,176	1,695	459	512
kWh Billed	329,595,161	14,642,721	189,839,634	53,381,407	12,037,510	15,487,130
Distribution Revenue	\$ 6,625,522	\$ 406,474	\$ 3,903,053	\$ 702,201	\$ 176,819	\$ 268,268
kWh Billed per customer	35,845	18,419	36,677	31,493	26,226	30,248
Distribution Revenue per Customer	\$ 721	\$ 511	\$ 754	\$ 414	\$ 385	\$ 524
General Service >50kW and Larger User (>5000kW) Customers						
Number of General Service Customers	1,073	35	630	180	49	50
Number of Larger User	5	0	2	2	0	1
kWh Billed	1,237,139,322	20,822,214	764,882,109	247,188,570	57,367,837	102,502,357
Distribution Revenue	\$ 8,871,609	\$ 291,448	\$ 7,311,187	\$ 1,235,209	\$ 400,739	\$ 684,790
kWh Billed per customer	1,147,625	594,920	1,210,257	1,358,179	1,170,772	2,009,850
Distribution Revenue per Customer	\$ 8,230	\$ 8,327	\$ 11,568	\$ 6,787	\$ 8,178	\$ 13,427



Individual Electricity Distributors As of December 31st, 2007 (Alphabetically Listed)	West Nipissing Energy Services Ltd.	West Perth Power Inc.	Westario Power Inc.	Whitby Hydro Electric Corporation	Woodstock Hydro Services Inc.
Statistics by Customer Class					
Residential Customers					
Number of Customers	2,922	1,762	18,603	35,594	13,036
kWh Billed	28,765,217	15,466,784	213,039,032	347,926,496	104,412,330
Distribution Revenue	\$ 636,221	\$ 429,535	\$ 4,862,334	\$ 11,867,621	\$ 3,731,809
kWh Billed per customer	9,844	8,778	11,452	9,775	8,010
Distribution Revenue per Customer	\$ 218	\$ 244	\$ 261	\$ 333	\$ 286
General Service <50kW Customers					
Number of Customers	362	252	2,443	2,268	1,212
kWh Billed	28,804,739	7,537,785	76,833,583	75,910,703	46,624,706
Distribution Revenue	\$ 174,008	\$ 144,419	\$ 1,141,514	\$ 1,772,534	\$ 875,867
kWh Billed per customer	79,571	29,912	31,451	33,470	38,469
Distribution Revenue per Customer	\$ 481	\$ 573	\$ 467	\$ 782	\$ 723
General Service >50kW and Larger User (>5000kW) Customers					
Number of General Service Customers	0	20	251	416	192
Number of Larger User	0	0	0	0	1
kWh Billed	0	38,509,925	170,153,451	436,056,135	241,349,571
Distribution Revenue	\$ -	\$ 269,015	\$ 1,562,725	\$ 3,917,043	\$ 1,735,976
kWh Billed per customer	-	1,925,496	677,902	1,048,212	1,250,516
Distribution Revenue per Customer	-	\$ 13,451	\$ 6,226	\$ 9,416	\$ 8,995



Glossary of Terms

FINANCIAL INFORMATION

	Aggregation of Trial Balance (RRR section 2.1.7.) accounts
Current Assets	1005 to 1350
Non-Current Assets	1405 to 1490
Regulatory Assets/Liability	1505 to 1592
Gross Property Plant & Equipment	1605 to 2075
Accumulated Amortization	2105 to 2180
Current Liabilities	2205 to 2296
Non-Current Liabilities excluding debt	2305 to 2435
Long Term Debt	2505 to 2550
Equity	3005 to 3065
Commodity and Distribution Revenue	4006 to 4245
Commodity Cost	4705 to 4750
Operation	4505 to 4565, 4805 to 4850, 5005 to 5096
Maintenance	4605 to 4640, 4905 to 4965, 5105 to 5195
Administration	5305 to 5695
Other Expenses	5205 to 5215
Amortization	5705 to 5740
Other Income	4305 to 4415
Other Expenses	6205 to 6225
Interest Expense	6005 to 6045
Taxes	6105 to 6115
Discontinued Operations Gains/(Losses)	6405 to 6415
Extraordinary & Other Gains/(Losses)	6305 to 6315



Glossary of Terms

FINANCIAL RATIOS

Liquidity Ratios measure the availability of cash to pay debt.

Current Ratio is a financial ratio that measures whether or not a firm has enough resources to pay its debts over the next 12 months.

Leverage Ratios are the financial statement ratios which show the degree to which the business is leveraging itself through its use of borrowed money.

Debt Ratio indicates what proportion of debt a company has relative to its assets.

Debt to Equity Ratio is a financial ratio indicating the relative proportion of equity and debt used to finance a company's assets.

Interest Coverage Ratio is used to determine a firm's ability to pay interest on outstanding debt.

Profitability Ratios measure the firm's use of its assets and control of its expenses to generate an acceptable rate of return.

Return on Assets (ROA) percentage shows how profitable a company's assets are in generating revenue. This is not regulatory return.

Return on Equity measures the rate of return on the ownership interest (shareholders' equity) of the common stock owners and a firm's efficiency at generating profits from every dollar of net assets, and shows how well a company uses investment dollars to generate earnings growth. This is not regulatory return.



Glossary of Terms

GENERAL STATISTICS

Population Served is the estimated number of people served as customers of the utility.

Municipal Population is the Stats Canada population of the municipalities served. May not equal Population Served as other utilities may also serve the same community.

Seasonal Population represents cottagers etc.

Total kWh Purchased equals "Total kWh sold (excluding losses)" plus "Distribution System Losses".

Total kWh sold (excluding losses) is the total kWh consumed within service territory.

Distribution System Losses is the sum of distribution system line losses, metering error, and energy theft.

Residential Customers applies to an account taking electricity at 750 volts or less where the electricity is used exclusively in a separate metered living accommodation.

General Service < 50 kW Customers applies to a non residential account taking electricity at 750 volts or less whose average monthly maximum demand is less than, or is forecast to be less than, 50 kW.

General Service > 50 to 5,000 kW Customers applies to a non residential account whose average monthly maximum demand used for billing purposes is greater than, or is forecast to be greater than, 50 kW but less than 5,000 kW.

Large User Customers applies to an account whose average monthly maximum demand used for billing purposes is greater than, or is forecast to be greater than, 5,000 kW.

Winter Peak (kW) is the peak load on the distributor system from October to March.

Summer Peak (kW) is the peak load on the distributor system from April to September.

Average Peak (kW) is the average of daily peaks throughout the year.

Capital Additions represents the spending on new infrastructure.



Glossary of Terms

SERVICE QUALITY INDICATORS

Low Voltage Connections is the percentage of new low voltage (<750 Volts) connection requests where the connection is made within 5 working days of all prerequisites (engineering, safety, etc.) being met.

High Voltage Connections is the percentage of new high voltage (≥ 750 Volts) connection requests where the connection is made within 10 working days of all prerequisites (engineering, safety, etc.) being met.

Cable Locates is the percentage of requests for cable locates that are completed within 5 working days (of the initial date of the request or, if the customer so designates, a specific requested date).

Phone Calls is the percentage of calls to the utility's general inquiry number that are answered in person within 30 seconds.

Annual Appointments is the percentage of appointments involving a customer premises visit where the appointment date and time (morning or afternoon) is met.

Annual Written Response is the percentage of customer inquiries relating to a customer's account and requiring a written response where the response is provided within 10 working days of receipt of the inquiry.

Emergency Urban Response is the percentage of emergency (fire, police, etc.) trouble calls where a qualified service person is on site within 60 minutes of the call. Urban areas are defined by the respective municipality.

Emergency Rural Response is the percentage of emergency (fire, police, etc.) trouble calls where a qualified service person is on site within 120 minutes of the call. Rural areas are defined by the respective municipality.

SAIDI is the average forced sustained interruption duration per customer served per year (measured in hours). Calculation is "Total Customer Hours of Interruptions" divided by "Total Number of Customers".

SAIFI is the average number of forced sustained interruptions experienced per customer served per year (measured in outages). Calculation is the "Total Customer Interruptions" divided by "Total Number of Customers".

CAIDI is the average forced sustained interruption duration experienced by interrupted customers per year (measured in hours). Calculation is SAIDI divided by SAIFI.