



2008 Yearbook of Electricity Distributors

Ontario Energy Board

Published on September 10, 2009





Ontario Energy Board
Commission de l'énergie de l'Ontario

2008 Yearbook of
Electricity Distributors



Background on 2008 Yearbook of Electricity Distributors

The Ontario Energy Board is the regulator of Ontario's natural gas and electricity industries. In the electricity sector, the Board sets transmission and distribution rates, and approves the Independent Electricity System Operator's (IESO) and Ontario Power Authority's (OPA) budgets and fees. The Board also sets the rate for the Standard Supply Service for distribution utilities that supply electricity (commodity) directly to consumers.

The Board provides this 2008 Yearbook of Electricity Distributors to inform interested parties and the general public with financial and operational information collected from Electricity Distributors. It is compiled from data submitted by the Distributors through the Reporting and Record-Keeping Requirements. Hydro One Remotes and direct connections to the transmission grid are not presented.

*The following distributors have not filed RRR information for 2008: Clinton Power Corporation, Dutton Hydro Limited, Newbury Power Inc., Attawapiskat First Nation, Fort Albany First Nation and Kashechewan First Nation. Revised versions of this yearbook may be posted once additional reporting data is received. It should also be noted that Newbury Power Inc. and Dutton Hydro were acquired by Middlesex Power Distribution in 2009.

Table of Contents	<u>Page</u>
Overview of Ontario Electricity Distributors	3
Individual Ontario Electricity Distributors	
Balance Sheet	13
Income Statement	27
Financial Ratios	41
General information	55
Unitized Statistics and Service Quality Indicators	69
Statistics by Customer Class	83
Glossary of Terms	97





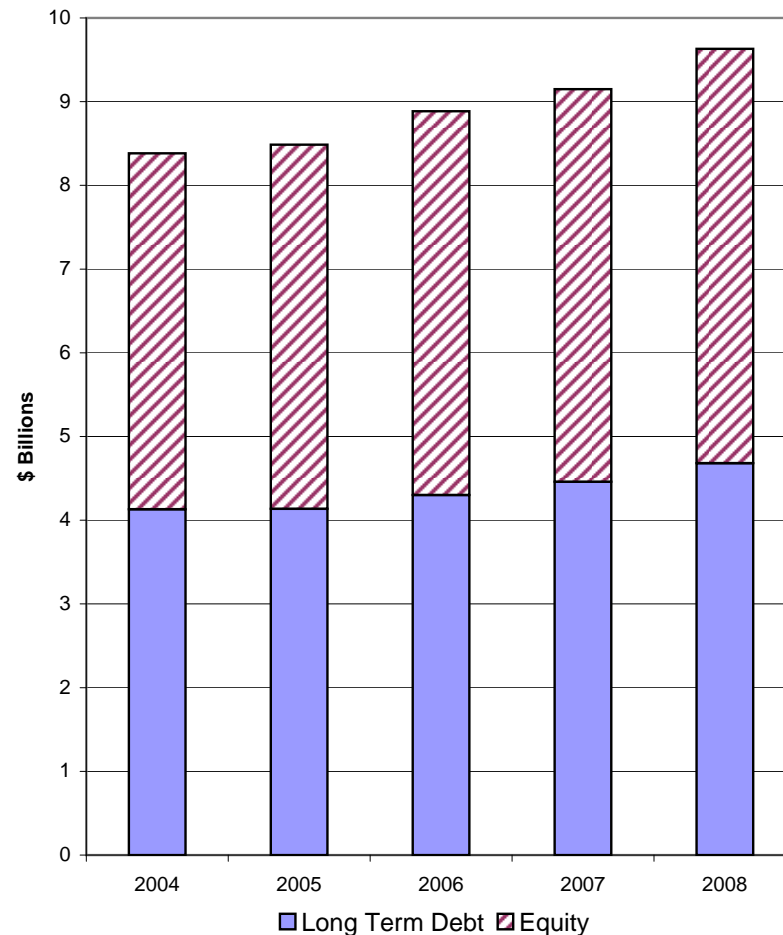
Overview of Ontario Electricity Distributors

FINANCIAL INFORMATION

Balance Sheet

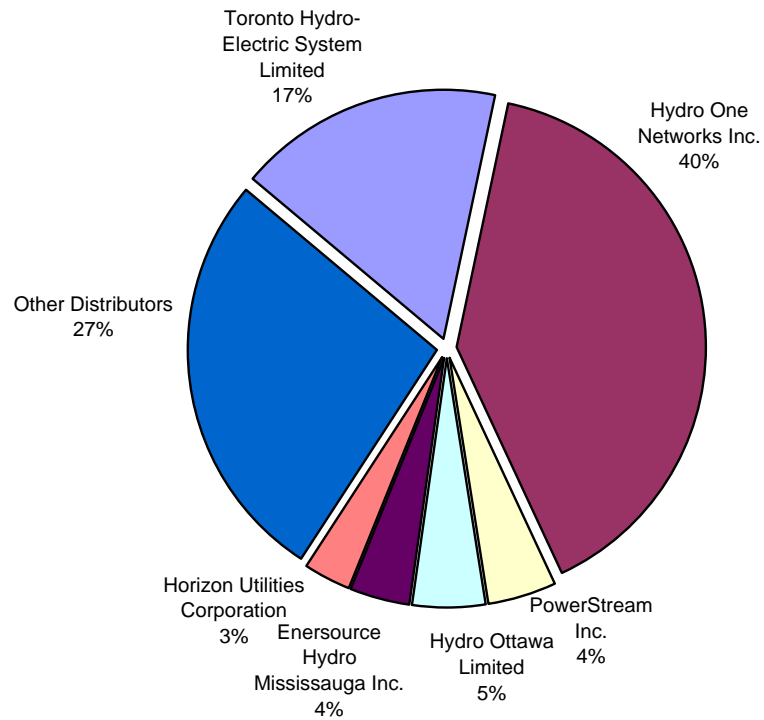
	Year ended December 31, 2008 in \$ 000's
Assets	
Current Assets	\$ 3,010,805
Property Plant & Equipment	
Gross Property Plant & Equipment	\$ 19,277,507
Accumulated Amortization	\$ 8,580,244
Net Property Plant & Equipment	<u>10,697,262</u>
Regulatory Assets	\$ 76,132
Other Non-Current Assets	\$ 108,228
Total Assets	<u><u>\$ 13,892,427</u></u>
Liabilities and Equity	
Current Liabilities	\$ 3,187,787
Regulatory Liabilities	-
Non-Current Liabilities excluding debt	\$ 1,075,136
Long Term Debt	\$ 4,676,011
Equity	\$ 4,953,492
Total Liabilities & Equity	<u><u>\$ 13,892,427</u></u>

Long-Term Debt & Equity of Distributors

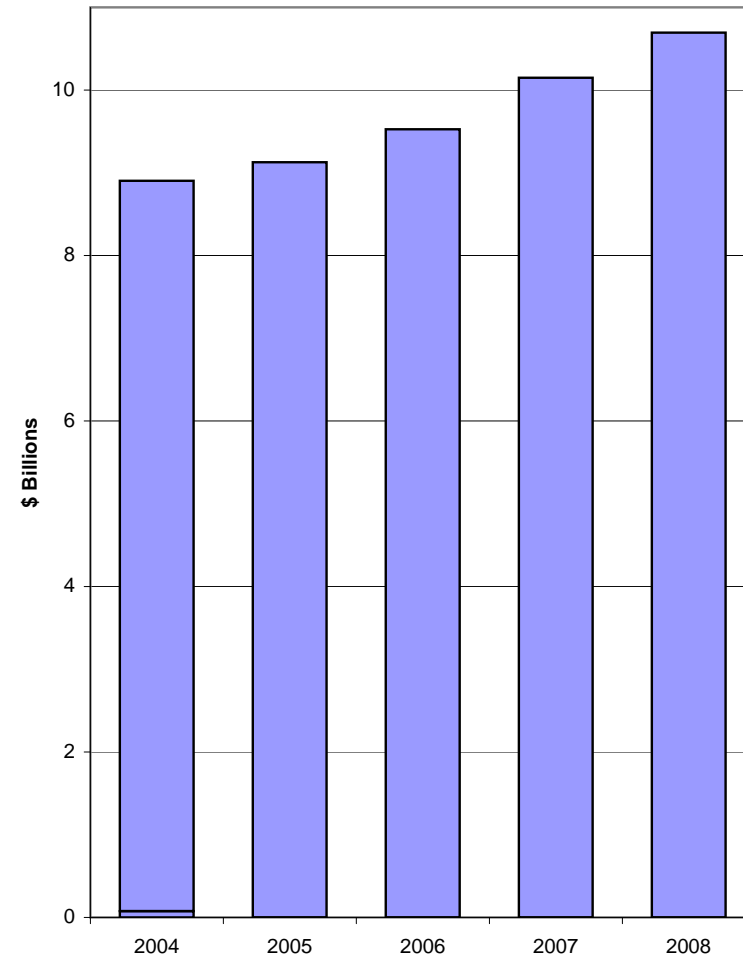




**Net Property Plant & Equipment by
Distributor**
\$10.7 billion

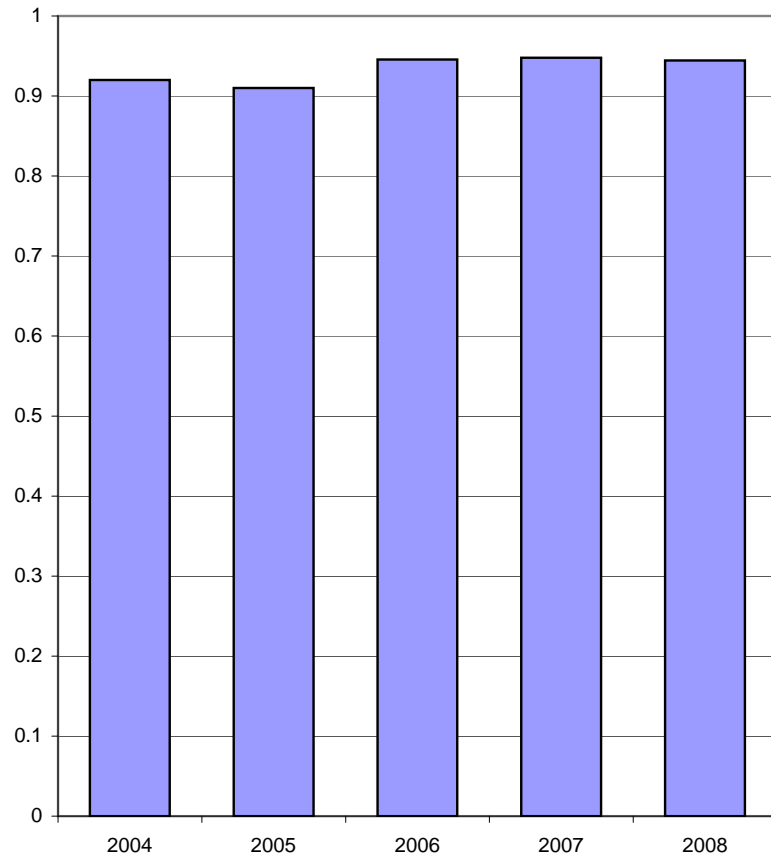


**Total Distributor
Net Property Plant & Equipment**

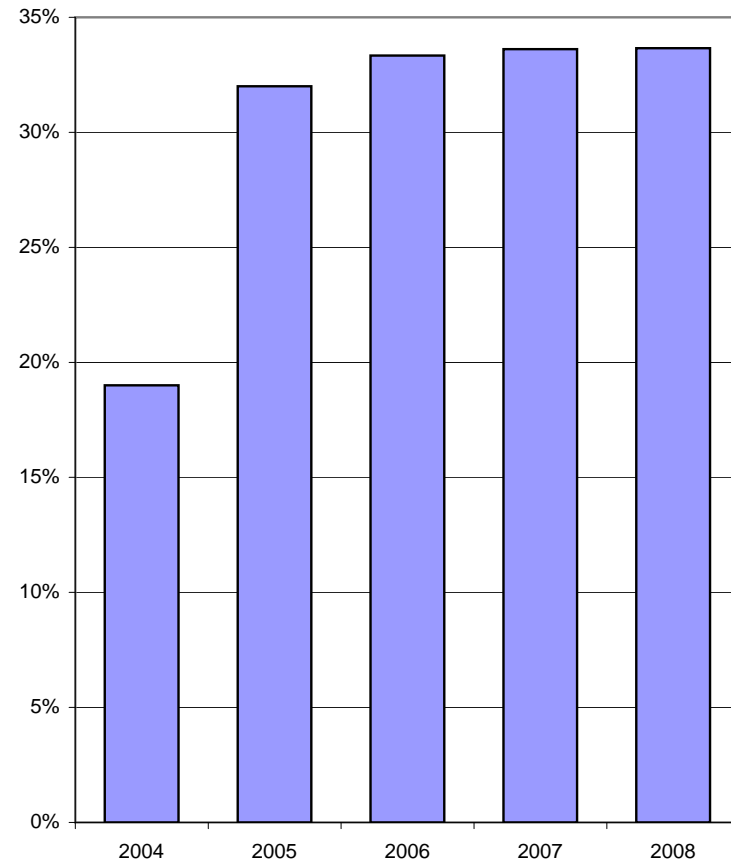




**Industry Current Ratio
(Current Assets/Current Liabilities)**

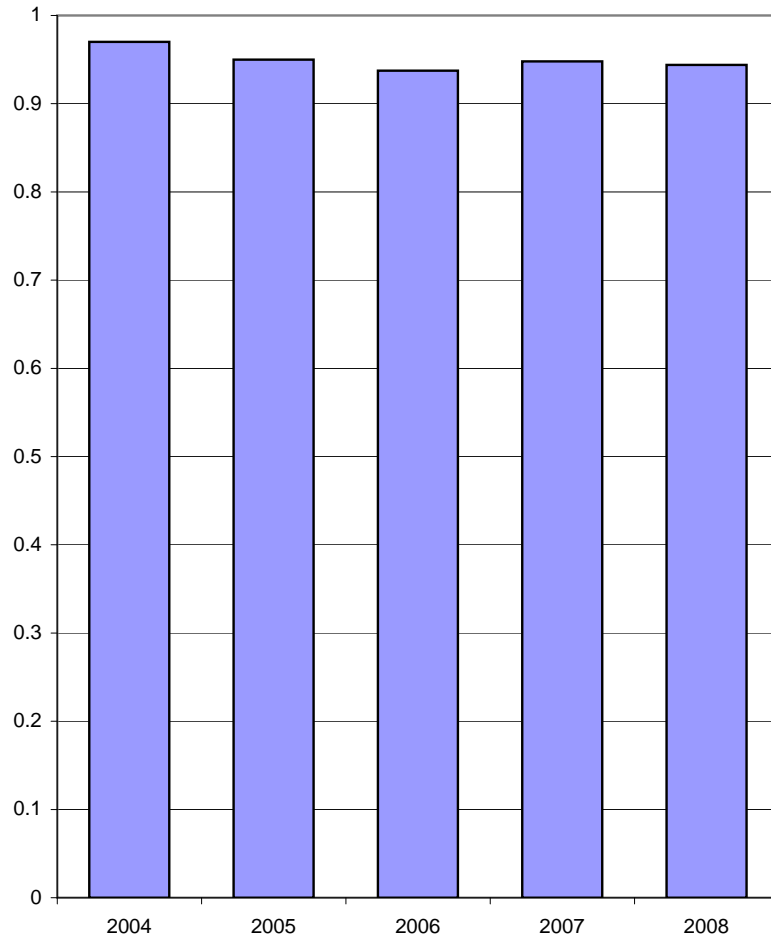


**Industry Debt Ratio
(Long-Term Debt/Total Assets)**

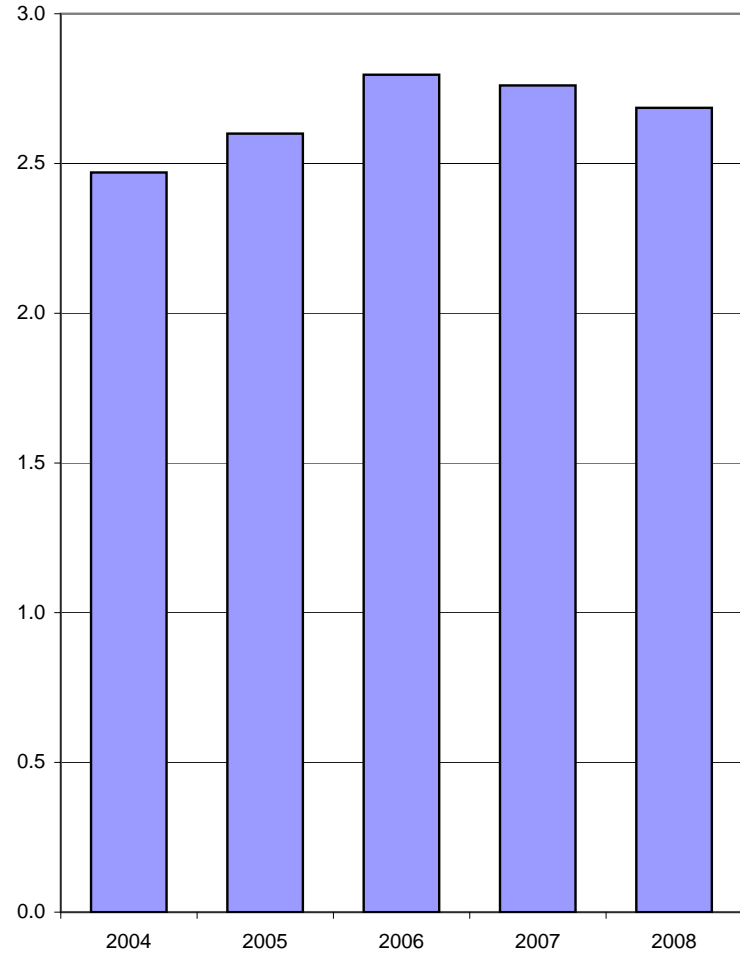




**Industry Debt to Equity Ratio
(Long-Term Debt/Equity)**



**Industry Interest Coverage
(EBIT/Interest Charges)**





Overview of Ontario Electricity Distributors

Income Statement

Year ended
December 31, 2008
in \$ 000's

Revenue

Power & Distribution Revenue	\$ 11,818,456
Cost of Power & Related Costs	\$ 9,030,760
Revenue from Distribution	\$ 2,787,696

Distribution Related Expenses

Operation	\$ 239,398
Maintenance	\$ 368,423
Administration	\$ 602,361
Other Expenses	\$ -
Amortization	\$ 742,706
Total Distribution Related Expenses	\$ 1,952,887

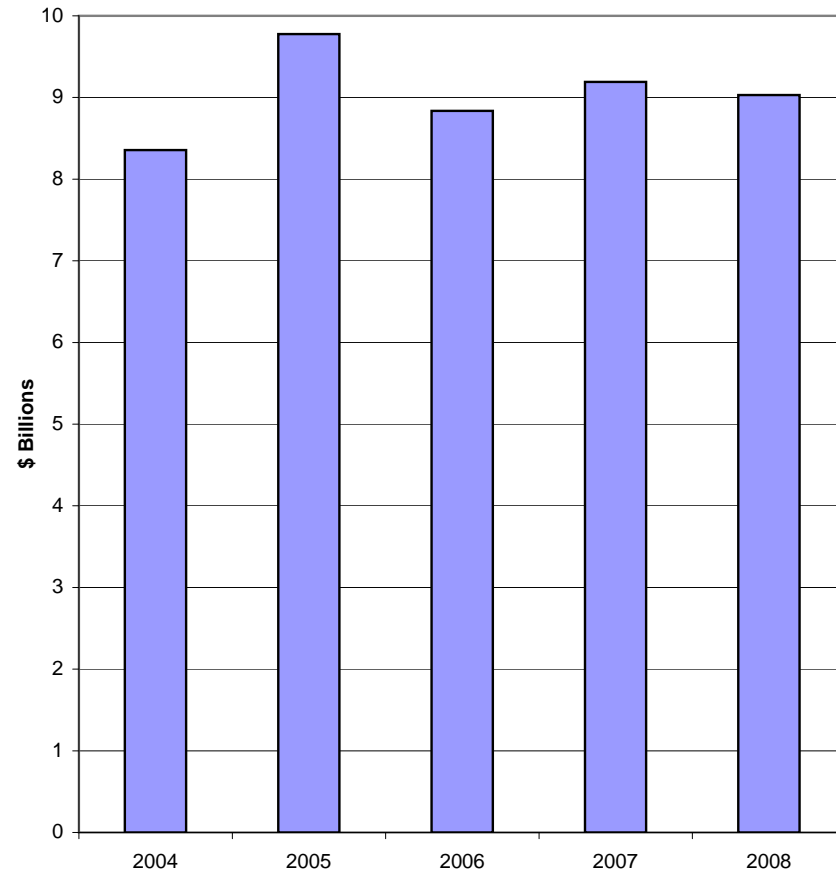
Other Income	\$ 111,859
Other Deductions	-\$ 1,195

Earnings before Interest and Taxes	\$ 945,473
Interest Expense	\$ 352,001
Taxes	\$ 219,631

Earnings before Unusual Items	\$ 373,840
Discontinued Operations Gains / (Losses)	\$ -
Extraordinary & Other Gains / (Losses)	\$ 1,564

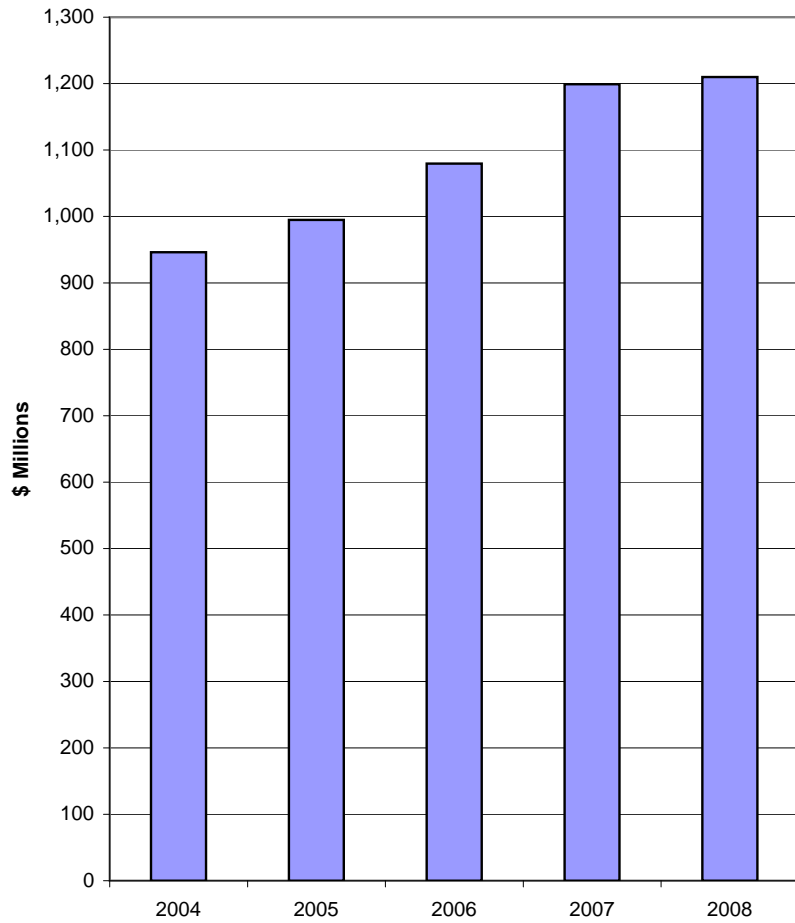
Net Income	\$ 375,405
-------------------	-------------------

Industry Commodity Cost

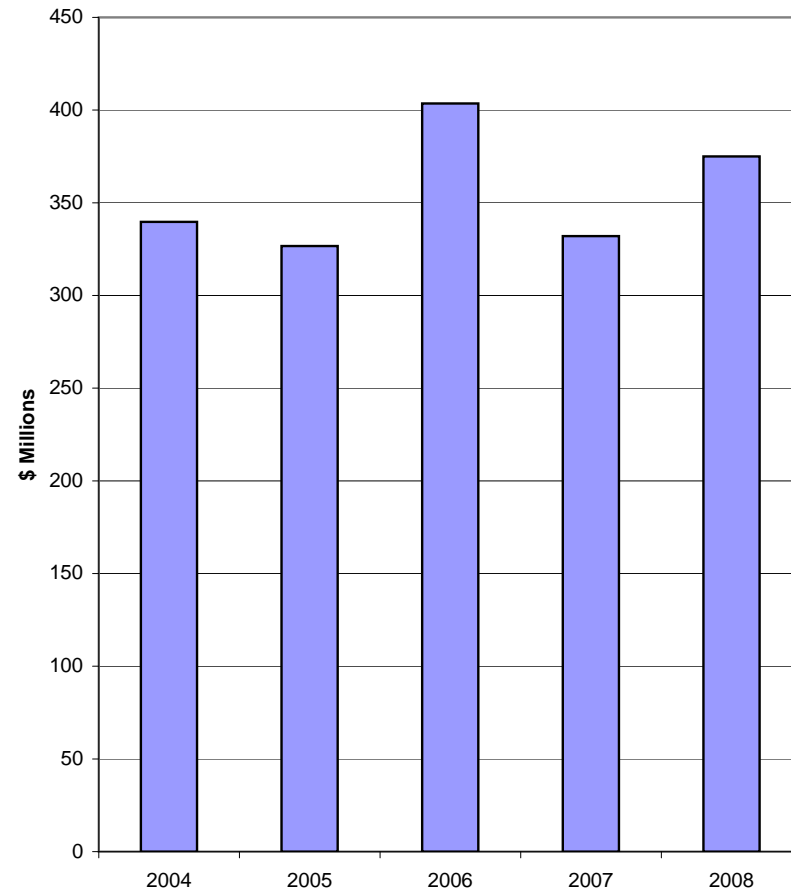




Total Distributor OM&A

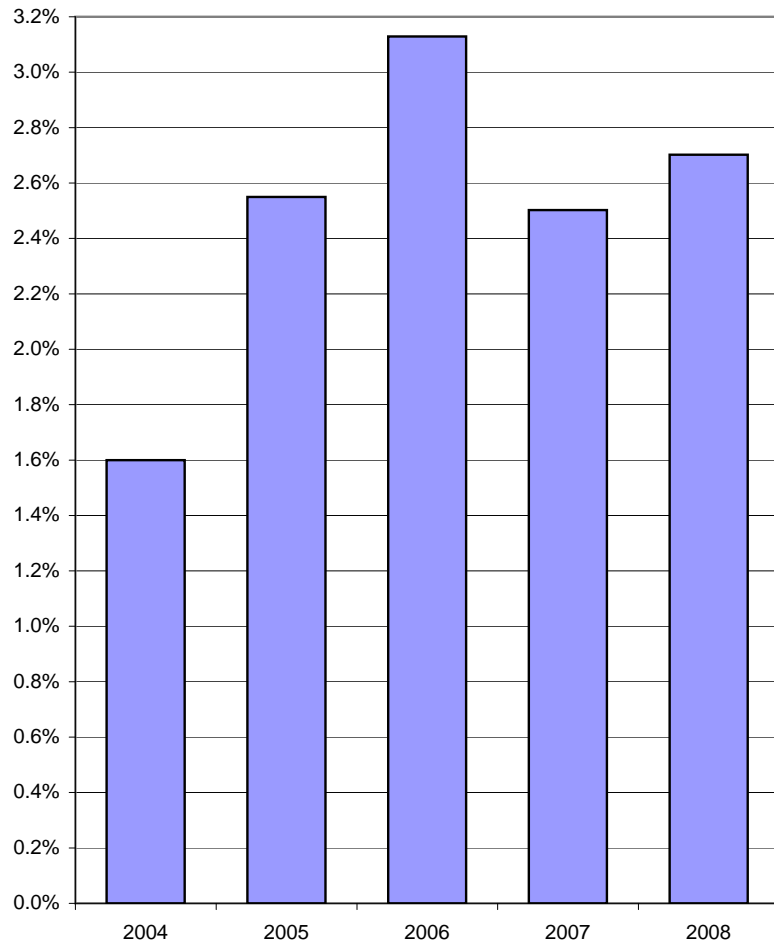


Total Distributor Net Income

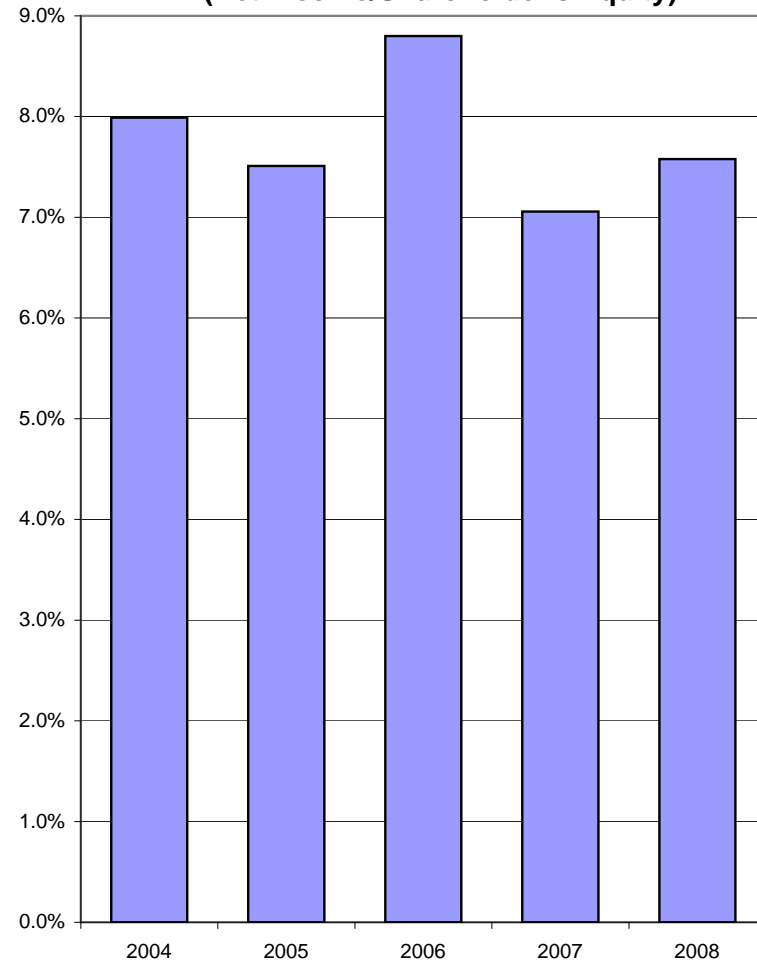




**Industry Financial Statement Return on Assets
(Net Income/Total Assets)**



**Industry Financial Statement Return on Equity
(Net Income/Shareholder's Equity)**



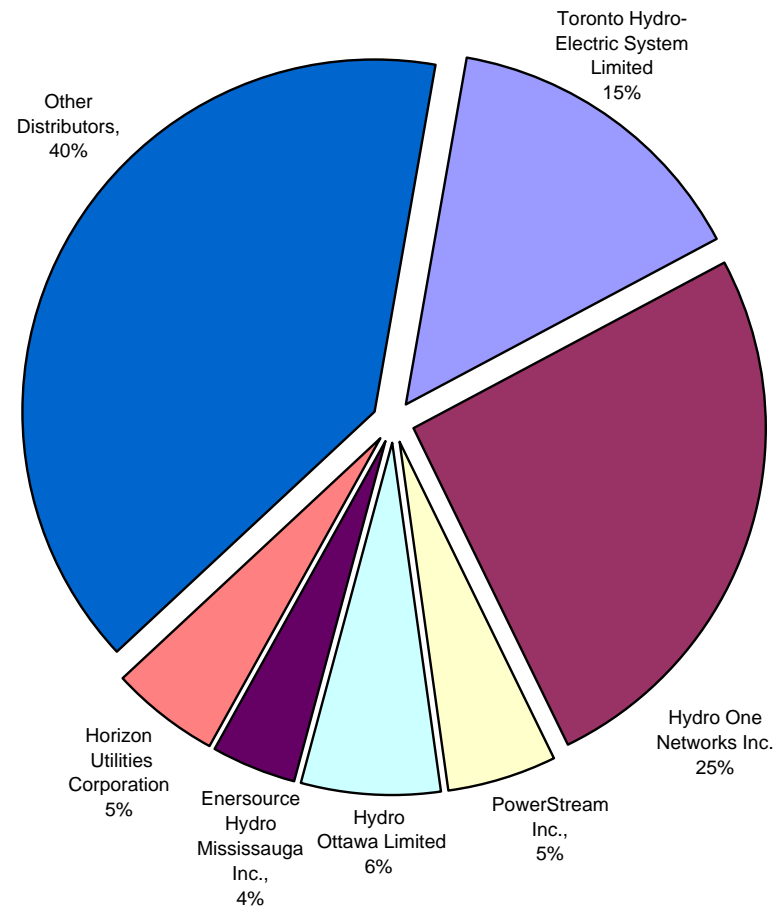


Overview of Ontario Electricity Distributors

GENERAL STATISTICS

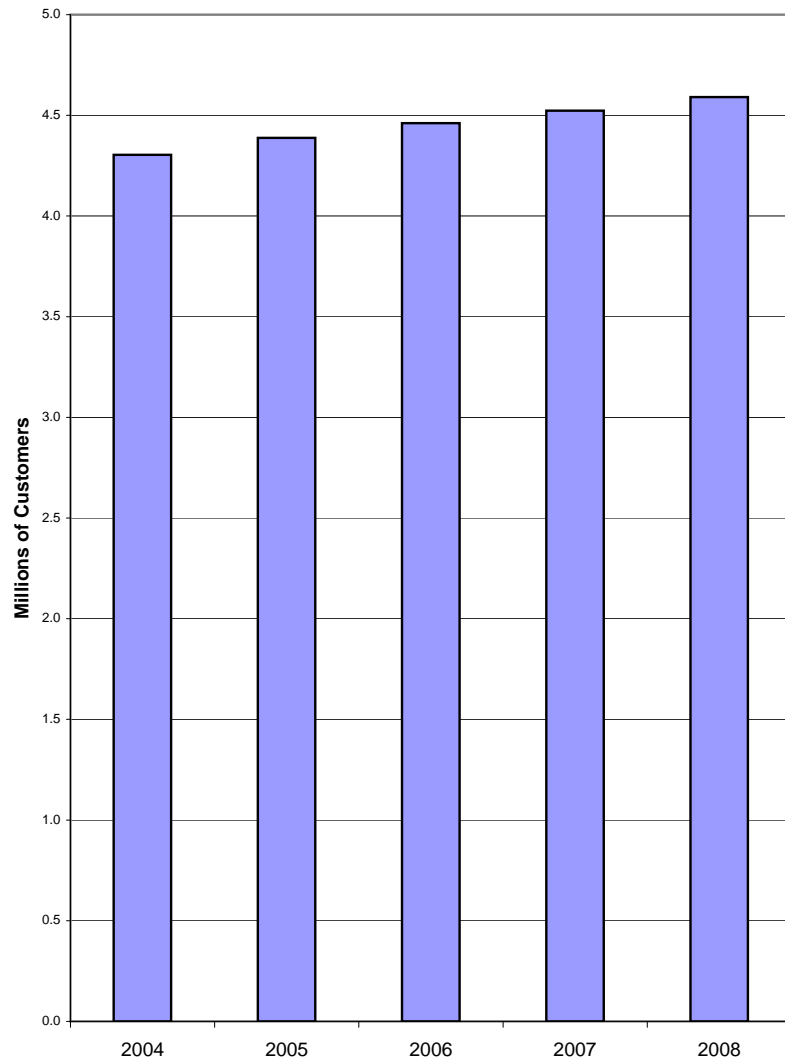
	Year ended December 31, 2008
Population Served	13,093,055
Municipal	13,792,130
Seasonal	165,041
Total Customers	4,693,045
Residential Customers	4,215,071
General Service <50kW Customers	429,376
General Service >50kW Customers	48,417
Large User (>5000kW) Customers	181
Total Service Area (sq km)	681,462
% Urban	1%
% Rural	99%
Total km of Line	195,779
Overhead km of line	158,391
Underground km of line	37,388
Total kWh sold (excluding losses)	123,503,514,640
Total Distribution Losses (kWh)	5,257,192,707
Total kWh Purchased	128,760,707,347
Capital Additions in 2008	\$ 1,372,884,926
<u>UNITIZED STATISTICS</u>	
# of Customers per sq km of Service Area	6.89
# of Customers per km of Line	23.97
Average Revenue from Distribution	
Per Customer annually	\$ 594.01
Per Total kWh Purchased	\$ 0.022
Annual Average Cost of Power:	
Per Customer	\$ 1,924
Per total kWh Purchased	\$ 0.0701
Average monthly total kWh consumed per customer	2,286
OM&A per customer	\$ 258
Net Income per customer	\$ 80
Net Fixed Assets per customer	\$ 2,279

Percentage of Distribution Customers

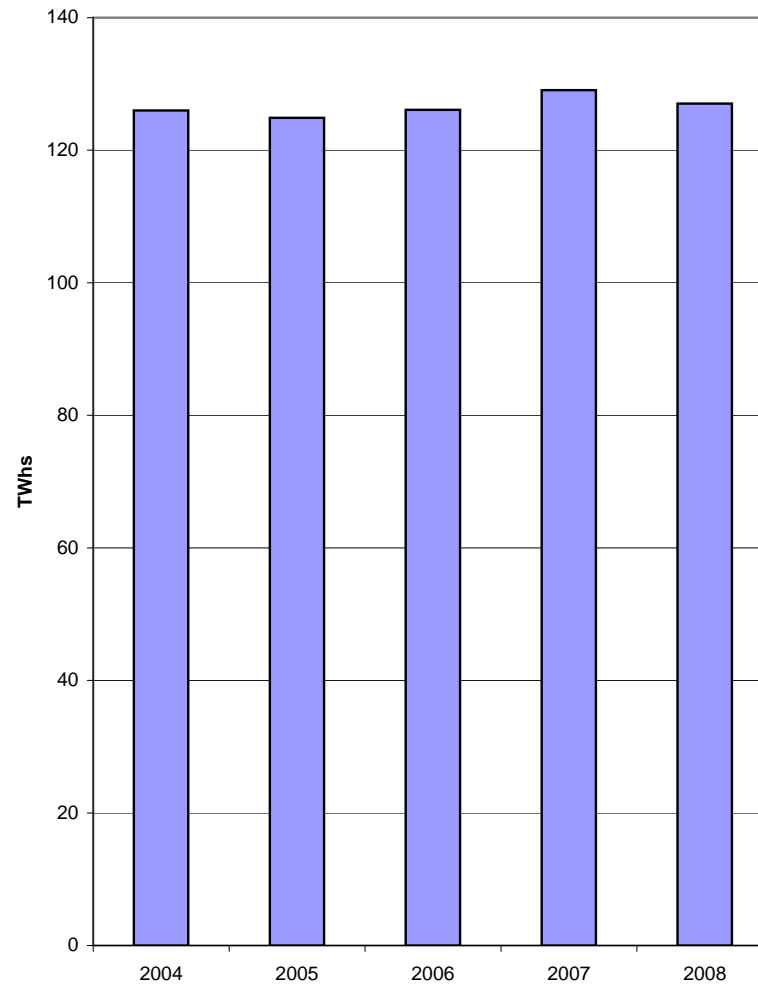




Total Number of Customers of Distributors



Total TWhs Purchased from IESO

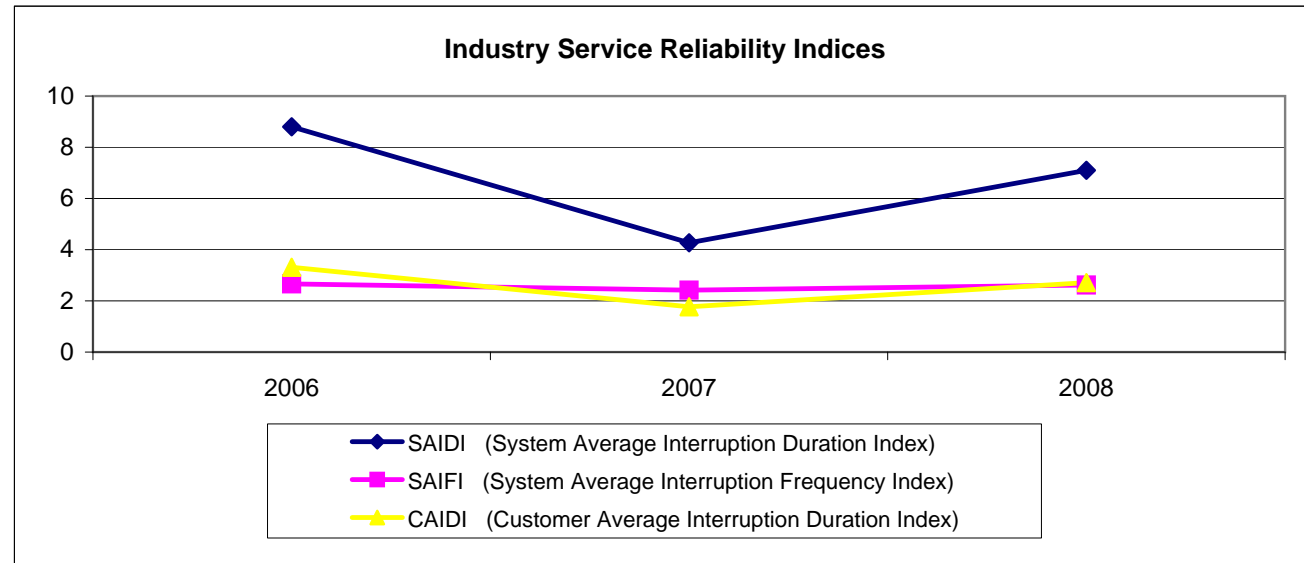




Service Reliability Indices

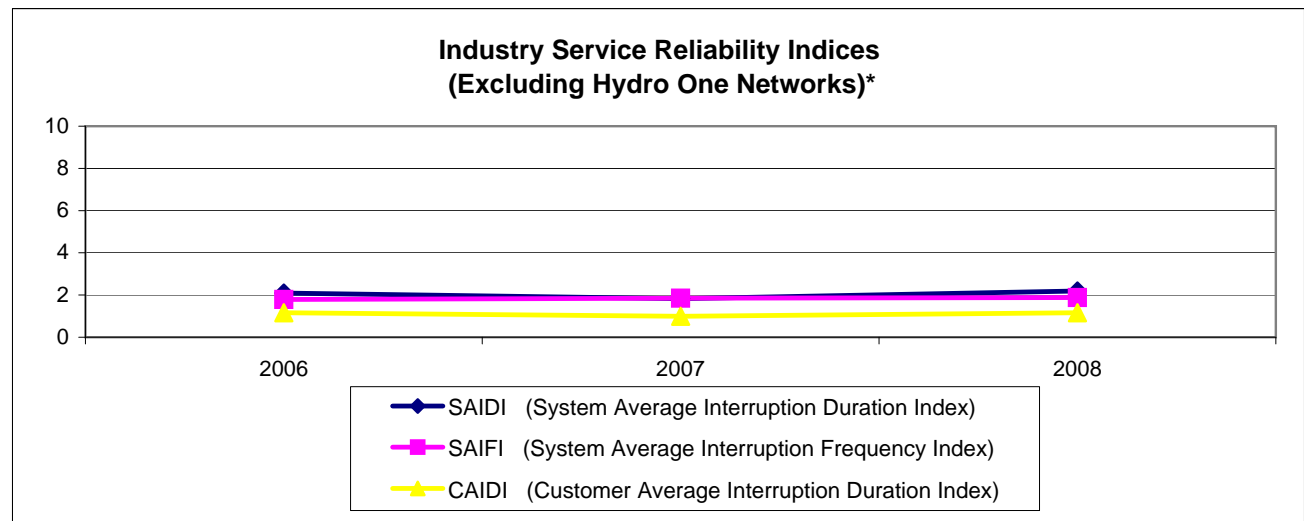
Industry

	2006	2007	2008
SAIDI	8.8	4.27	7.1
SAIFI	2.66	2.42	2.62
CAIDI	3.31	1.77	2.71



Industry Excluding Hydro One Networks

	2006	2007	2008
SAIDI	2.09	1.83	2.19
SAIFI	1.79	1.85	1.88
CAIDI	1.16	0.99	1.16



*Hydro One Networks has a major impact on the industry statistics due to low customer density, service areas spread across the province and occurrence of significant weather related outages in 2006 and 2008.

Note: Outage statistics report all outages affecting customers including those arising from within the distributor service area and those arising upstream from the distributor.



Individual Electricity Distributors As of December 31st, 2008 (Alphabetically Listed)	Atikokan Hydro Inc.	Barrie Hydro Distribution Inc.	Bluewater Power Distribution Corporation	Brant County Power Inc.	Brantford Power Inc.	Burlington Hydro Inc.
FINANCIAL INFORMATION						
Balance Sheet						
Assets						
Current Assets	\$ 889,856	\$ 40,307,085	\$ 27,253,565	\$ 7,223,251	\$ 23,800,261	\$ 49,148,874
Property Plant & Equipment						
Gross Property Plant & Equipment	\$ 4,631,739	\$ 238,332,464	\$ 91,751,442	\$ 25,891,628	\$ 78,280,998	\$ 192,719,439
Accumulated Amortization	\$ (2,691,085)	\$ (108,307,273)	\$ (52,799,235)	\$ (7,127,980)	\$ (19,952,643)	\$ (110,492,858)
Net Property Plant & Equipment	\$ 1,940,654	\$ 130,025,191	\$ 38,952,207	\$ 18,763,648	\$ 58,328,355	\$ 82,226,581
Regulatory Assets	\$ (98,142)	\$ (6,179,187)	\$ (7,419,724)	\$ (2,205,022)	\$ (7,476,449)	\$ (2,742,512)
Other Non-Current Assets	\$ -	\$ 4,008,789	\$ -	\$ 546,834	\$ 1,928,864	\$ 27,496
Total Assets	\$ 2,732,369	\$ 168,161,878	\$ 58,786,048	\$ 24,328,711	\$ 76,581,031	\$ 128,660,438
Liabilities						
Current Liabilities	\$ 490,338	\$ 31,557,612	\$ 12,622,541	\$ 3,328,101	\$ 12,243,979	\$ 21,449,303
Non-Current Liabilities excluding debt	\$ (22,736)	\$ 6,137,653	\$ 4,818,337	\$ 821,818	\$ (471,310)	\$ 2,195,086
Long Term Debt	\$ 1,329,480	\$ 70,000,000	\$ 19,377,604	\$ 5,000,000	\$ 33,457,220	\$ 47,878,608
Total Liabilities	1,797,083	107,695,265	36,818,482	9,149,919	45,229,889	71,522,997
Equity	\$ 935,286	\$ 60,466,613	\$ 21,967,566	\$ 15,178,791	\$ 31,351,142	\$ 57,137,442
Total Liabilities & Equity	\$ 2,732,369	\$ 168,161,878	\$ 58,786,048	\$ 24,328,711	\$ 76,581,031	\$ 128,660,438



Individual Electricity Distributors As of December 31st, 2008 (Alphabetically Listed)	COLLUS Power Corp.	Cambridge and North Dumfries Hydro Inc.	Canadian Niagara Power Inc. - Fort Erie	Centre Wellington Hydro Ltd.	Chapleau Public Utilities Corporation	Chatham-Kent Hydro Inc.
FINANCIAL INFORMATION						
Balance Sheet						
Assets						
Current Assets	\$ 12,735,036	\$ 49,323,596	\$ 6,709,923	\$ 8,283,730	\$ 1,381,453	\$ 19,478,159
Property Plant & Equipment						
Gross Property Plant & Equipment	\$ 24,477,891	\$ 161,338,229	\$ 63,867,325	\$ 14,638,133	\$ 2,228,303	\$ 71,667,678
Accumulated Amortization	\$ (12,509,150)	\$ (78,984,079)	\$ (26,486,379)	\$ (7,902,234)	\$ (1,341,746)	\$ (25,236,982)
Net Property Plant & Equipment	\$ 11,968,741	\$ 82,354,150	\$ 37,380,946	\$ 6,735,899	\$ 886,557	\$ 46,430,696
Regulatory Assets	\$ (2,679,063)	\$ (10,242,741)	\$ 1,225,376	\$ (1,629,174)	\$ (303,378)	\$ 1,410,809
Other Non-Current Assets	\$ 41,170	\$ -	\$ 1,712,922	\$ 19,026	\$ -	\$ -
Total Assets	\$ 22,065,884	\$ 121,435,005	\$ 47,029,168	\$ 13,409,481	\$ 1,964,632	\$ 67,319,663
Liabilities						
Current Liabilities	\$ 8,743,203	\$ 18,843,384	\$ 4,894,361	\$ 2,066,112	\$ 371,850	\$ 11,908,360
Non-Current Liabilities excluding debt	\$ 588,442	\$ 6,246,357	\$ 4,812,329	\$ 563,004	\$ 91,488	\$ 4,337,041
Long Term Debt	\$ 2,799,704	\$ 38,019,703	\$ 28,950,000	\$ 5,046,753	\$ 1,121,529	\$ 23,523,326
Total Liabilities	12,131,349	63,109,444	38,656,690	7,675,869	1,584,866	39,768,726
Equity	\$ 9,934,534	\$ 58,325,561	\$ 8,372,478	\$ 5,733,612	\$ 379,766	\$ 27,550,937
Total Liabilities & Equity	\$ 22,065,884	\$ 121,435,005	\$ 47,029,168	\$ 13,409,481	\$ 1,964,632	\$ 67,319,663



Individual Electricity Distributors As of December 31st, 2008 (Alphabetically Listed)	Clinton Power Corporation	Cooperative Hydro Embrun Inc.	E.L.K. Energy Inc.	ENWIN Utilities Ltd.	Eastern Ontario Power Inc.	Enersource Hydro Mississauga Inc.
FINANCIAL INFORMATION						
Balance Sheet						
Assets						
Current Assets	\$ -	\$ 2,403,401	\$ 12,476,251	\$ 38,154,219	\$ 1,269,866	\$ 172,983,885
Property Plant & Equipment						
Gross Property Plant & Equipment	\$ -	\$ 2,742,822	\$ 21,862,737	\$ 273,430,081	\$ 14,857,982	\$ 812,647,945
Accumulated Amortization	\$ -	\$ (849,631)	\$ (13,052,260)	\$ (99,331,878)	\$ (4,051,509)	\$ (388,583,876)
Net Property Plant & Equipment	\$ -	\$ 1,893,191	\$ 8,810,477	\$ 174,098,203	\$ 10,806,474	\$ 424,064,069
Regulatory Assets	\$ -	\$ (168,062)	\$ 2,058,670	\$ (9,401,850)	\$ (254,223)	\$ (10,704,025)
Other Non-Current Assets	\$ -	\$ 12,810	\$ 44,490	\$ 16,788,406	\$ -	\$ 22,013,437
Total Assets	\$ -	\$ 4,141,341	\$ 23,389,889	\$ 219,638,978	\$ 11,822,117	\$ 608,357,366
Liabilities						
Current Liabilities	\$ -	\$ 698,641	\$ 3,330,895	\$ 42,724,917	\$ 6,266,960	\$ 96,034,292
Non-Current Liabilities excluding debt	\$ -	\$ 29,922	\$ 1,342,833	\$ 41,402,646	\$ 198,828	\$ 24,576,379
Long Term Debt	\$ -	\$ 2,862,994	\$ 3,900,000	\$ 50,000,000	\$ 2,100,000	\$ 290,000,000
Total Liabilities	\$ -	\$ 3,591,556	\$ 8,573,728	\$ 134,127,563	\$ 8,565,788	\$ 410,610,671
Equity	\$ -	\$ 549,785	\$ 14,816,160	\$ 85,511,415	\$ 3,256,329	\$ 197,746,695
Total Liabilities & Equity	\$ -	\$ 4,141,341	\$ 23,389,889	\$ 219,638,978	\$ 11,822,117	\$ 608,357,366



Individual Electricity Distributors As of December 31st, 2008 (Alphabetically Listed)	Erie Thames Powerlines Corporation	Espanola Regional Hydro Distribution Corporation	Essex Powerlines Corporation	Festival Hydro Inc.	Fort Frances Power Corporation	Grand Valley Energy Inc.
FINANCIAL INFORMATION						
Balance Sheet						
Assets						
Current Assets	\$ 5,529,151	\$ 2,795,762	\$ 12,841,021	\$ 12,713,762	\$ 4,637,193	\$ 451,808
Property Plant & Equipment						
Gross Property Plant & Equipment	\$ 23,401,578	\$ 6,367,044	\$ 43,248,946	\$ 70,656,526	\$ 9,832,494	\$ 1,168,040
Accumulated Amortization	\$ (5,837,667)	\$ (4,245,105)	\$ (12,051,448)	\$ (38,754,747)	\$ (6,852,036)	\$ (822,278)
Net Property Plant & Equipment	\$ 17,563,910	\$ 2,121,938	\$ 31,197,498	\$ 31,901,779	\$ 2,980,457	\$ 345,761
Regulatory Assets	\$ 2,135,508	\$ 256,778	\$ 618,313	\$ (2,177,504)	\$ (402,781)	\$ (16,758)
Other Non-Current Assets	\$ 4,000	\$ -	\$ -	\$ 49,775	\$ -	\$ -
Total Assets	\$ 25,232,569	\$ 5,174,478	\$ 44,656,833	\$ 42,487,813	\$ 7,214,869	\$ 780,811
Liabilities						
Current Liabilities	\$ 7,232,697	\$ 1,839,074	\$ 12,828,103	\$ 22,443,640	\$ 1,170,929	\$ 288,645
Non-Current Liabilities excluding debt	\$ 853,676	\$ 144,068	\$ 5,127,127	\$ (225,062)	\$ 198,272	\$ 16,988
Long Term Debt	\$ 8,524,439	\$ 3,804,511	\$ 9,240,198	\$ -	\$ -	\$ -
Total Liabilities	16,610,812	5,787,652	27,195,428	22,218,578	1,369,200	305,632
Equity	\$ 8,621,758	\$ (613,175)	\$ 17,461,405	\$ 20,269,235	\$ 5,845,668	\$ 475,179
Total Liabilities & Equity	\$ 25,232,569	\$ 5,174,478	\$ 44,656,833	\$ 42,487,813	\$ 7,214,869	\$ 780,811



Individual Electricity Distributors As of December 31st, 2008 (Alphabetically Listed)	Great Lakes Power Ltd.	Greater Sudbury Hydro Inc.	Grimsby Power Incorporated	Guelph Hydro Electric Systems Inc.	Haldimand County Hydro Inc.	Halton Hills Hydro Inc.
FINANCIAL INFORMATION						
Balance Sheet						
Assets						
Current Assets	\$ 23,204,111	\$ 32,134,817	\$ 4,278,016	\$ 30,021,568	\$ 11,127,205	\$ 13,143,302
Property Plant & Equipment						
Gross Property Plant & Equipment	\$ 113,854,932	\$ 155,413,445	\$ 22,842,444	\$ 129,861,560	\$ 50,850,617	\$ 45,079,297
Accumulated Amortization	\$ (48,961,827)	\$ (93,177,139)	\$ (11,823,433)	\$ (43,283,439)	\$ (18,016,295)	\$ (15,028,705)
Net Property Plant & Equipment	\$ 64,893,105	\$ 62,236,307	\$ 11,019,010	\$ 86,578,121	\$ 32,834,323	\$ 30,050,592
Regulatory Assets	\$ 15,906,983	\$ (3,075,761)	\$ (1,362,815)	\$ 1,139,844	\$ 741,010	\$ 2,139,925
Other Non-Current Assets	\$ -	\$ 400,000	\$ 1,200,000	\$ 115,691	\$ -	\$ 2,090,809
Total Assets	\$ 104,004,199	\$ 91,695,363	\$ 15,134,211	\$ 117,855,225	\$ 44,702,538	\$ 47,424,628
Liabilities						
Current Liabilities	\$ 79,084,125	\$ 63,125,320	\$ 2,406,997	\$ 33,896,533	\$ 8,071,466	\$ 8,904,781
Non-Current Liabilities excluding debt	\$ (12,359)	\$ 13,268,871	\$ 2,999	\$ 3,136,305	\$ 206,567	\$ 1,003,250
Long Term Debt	\$ -	\$ -	\$ 5,782,746	\$ 30,000,273	\$ 8,070,000	\$ 16,141,969
Total Liabilities	79,071,765	76,394,192	8,192,742	67,033,112	16,348,033	26,050,000
Equity	\$ 24,932,433	\$ 15,301,171	\$ 6,941,469	\$ 50,822,113	\$ 28,354,505	\$ 21,374,628
Total Liabilities & Equity	\$ 104,004,199	\$ 91,695,363	\$ 15,134,211	\$ 117,855,225	\$ 44,702,538	\$ 47,424,628



Individual Electricity Distributors As of December 31st, 2008 (Alphabetically Listed)	Hearst Power Distribution Company Limited	Horizon Utilities Corporation	Hydro 2000 Inc.	Hydro Hawkesbury Inc.	Hydro One Brampton Networks Inc.	Hydro One Networks Inc.
FINANCIAL INFORMATION						
Balance Sheet						
Assets						
Current Assets	\$ 6,074,343	\$ 100,319,057	\$ 1,257,253	\$ 6,262,809	\$ 50,042,458	\$ 591,665,200
Property Plant & Equipment						
Gross Property Plant & Equipment	\$ 4,029,753	\$ 605,684,075	\$ 734,461	\$ 3,216,744	\$ 521,284,983	\$ 6,696,885,900
Accumulated Amortization	\$ (3,043,719)	\$ (297,186,249)	\$ (321,680)	\$ (1,322,276)	\$ (214,006,339)	\$ (2,449,454,900)
Net Property Plant & Equipment	\$ 986,034	\$ 308,497,826	\$ 412,781	\$ 1,894,469	\$ 307,278,644	\$ 4,247,431,000
Regulatory Assets	\$ (1,059,401)	\$ (7,136,711)	\$ 239,246	\$ (1,908,080)	\$ (8,701,711)	\$ 258,523,000
Other Non-Current Assets	\$ -	\$ -	\$ -	\$ 21,262	\$ 623,309	\$ 12,355,200
Total Assets	\$ 6,000,976	\$ 401,680,171	\$ 1,909,280	\$ 6,270,459	\$ 349,242,700	\$ 5,109,974,400
Liabilities						
Current Liabilities	\$ 1,582,635	\$ 217,136,365	\$ 876,244	\$ 2,055,557	\$ 52,533,074	\$ 686,428,900
Non-Current Liabilities excluding debt	\$ 33,437	\$ 10,890,175	\$ 5,665	\$ 524,420	\$ 7,651,047	\$ 622,619,100
Long Term Debt	\$ 1,700,000	\$ -	\$ 299,582	\$ 1,151,898	\$ 143,000,000	\$ 2,168,844,400
Total Liabilities	3,316,072	228,026,540	1,181,492	3,731,875	203,184,121	3,477,892,400
Equity	\$ 2,684,905	\$ 173,653,631	\$ 727,789	\$ 2,538,584	\$ 146,058,579	\$ 1,632,082,000
Total Liabilities & Equity	\$ 6,000,976	\$ 401,680,171	\$ 1,909,280	\$ 6,270,459	\$ 349,242,700	\$ 5,109,974,400



Individual Electricity Distributors As of December 31st, 2008 (Alphabetically Listed)	Hydro Ottawa Limited	Innisfil Hydro Distribution Systems Limited	Kenora Hydro Electric Corporation Ltd.	Kingston Hydro Corporation	Kitchener-Wilmot Hydro Inc.	Lakefront Utilities Inc.
FINANCIAL INFORMATION						
Balance Sheet						
Assets						
Current Assets	\$ 131,840,252	\$ 7,521,166	\$ 3,711,429	\$ 18,008,939	\$ 74,805,877	\$ 6,974,499
Property Plant & Equipment						
Gross Property Plant & Equipment	\$ 951,713,820	\$ 42,607,515	\$ 13,950,106	\$ 39,949,675	\$ 257,735,126	\$ 20,383,574
Accumulated Amortization	\$ (456,982,033)	\$ (25,149,794)	\$ (6,100,549)	\$ (13,790,810)	\$ (119,897,300)	\$ (9,640,718)
Net Property Plant & Equipment	\$ 494,731,787	\$ 17,457,720	\$ 7,849,557	\$ 26,158,865	\$ 137,837,826	\$ 10,742,855
Regulatory Assets	\$ 13,097,640	\$ 1,095,572	\$ (441,771)	\$ (1,614,342)	\$ (6,143,620)	\$ 792,461
Other Non-Current Assets	\$ 260,355	\$ 278,715	\$ 613,237	\$ 500,000	\$ 11,564,625	\$ -
Total Assets	\$ 639,930,035	\$ 26,353,173	\$ 11,732,452	\$ 43,053,462	\$ 218,064,707	\$ 18,509,815
Liabilities						
Current Liabilities	\$ 119,416,943	\$ 3,816,487	\$ 1,407,793	\$ 12,277,231	\$ 25,231,866	\$ 3,717,124
Non-Current Liabilities excluding debt	\$ 14,420,888	\$ 629,617	\$ 150,885	\$ 2,449,377	\$ 9,101,771	\$ 457,542
Long Term Debt	\$ 282,185,000	\$ 7,139,444	\$ 3,069,279	\$ 10,880,619	\$ 76,962,142	\$ 7,000,000
Total Liabilities	416,022,831	11,585,549	4,627,956	25,607,227	111,295,780	11,174,666
Equity	\$ 223,907,204	\$ 14,767,624	\$ 7,104,495	\$ 17,446,235	\$ 106,768,927	\$ 7,335,149
Total Liabilities & Equity	\$ 639,930,035	\$ 26,353,173	\$ 11,732,452	\$ 43,053,462	\$ 218,064,707	\$ 18,509,815



Individual Electricity Distributors As of December 31st, 2008 (Alphabetically Listed)	Lakeland Power Distribution Ltd.	London Hydro Inc.	Middlesex Power Distribution Corporation	Midland Power Utility Corporation	Milton Hydro Distribution Inc.	Newbury Power Inc.
FINANCIAL INFORMATION						
Balance Sheet						
Assets						
Current Assets	\$ 4,291,359	\$ 80,207,249	\$ 4,820,228	\$ 4,072,853	\$ 15,009,327	\$ -
Property Plant & Equipment						
Gross Property Plant & Equipment	\$ 19,778,121	\$ 348,416,945	\$ 16,902,027	\$ 18,004,321	\$ 79,671,359	\$ -
Accumulated Amortization	\$ (7,407,082)	\$ (163,035,544)	\$ (9,052,538)	\$ (9,990,906)	\$ (41,043,336)	\$ -
Net Property Plant & Equipment	\$ 12,371,038	\$ 185,381,400	\$ 7,849,489	\$ 8,013,415	\$ 38,628,023	\$ -
Regulatory Assets	\$ 69,055	\$ (6,592,284)	\$ 747,884	\$ (531,572)	\$ (64,409)	\$ -
Other Non-Current Assets	\$ -	\$ -	\$ -	\$ 1,260,100	\$ -	\$ -
Total Assets	\$ 16,731,453	\$ 258,996,366	\$ 13,417,601	\$ 12,814,796	\$ 53,572,942	\$ -
Liabilities						
Current Liabilities	\$ 3,181,142	\$ 42,756,190	\$ 3,169,821	\$ 3,357,198	\$ 8,566,317	\$ -
Non-Current Liabilities excluding debt	\$ 235,337	\$ 9,620,046	\$ 1,147,146	\$ 95,713	\$ 2,438,829	\$ -
Long Term Debt	\$ 3,487,500	\$ 70,000,000	\$ 4,300,000	\$ 1,122,519	\$ 14,934,210	\$ -
Total Liabilities	6,903,979	122,376,236	8,616,967	4,575,431	25,939,356	-
Equity	\$ 9,827,474	\$ 136,620,130	\$ 4,800,634	\$ 8,239,365	\$ 27,633,586	\$ -
Total Liabilities & Equity	\$ 16,731,453	\$ 258,996,366	\$ 13,417,601	\$ 12,814,796	\$ 53,572,942	\$ -



Individual Electricity Distributors As of December 31st, 2008 (Alphabetically Listed)	Newmarket - Tay Power Distribution Ltd.	Niagara Peninsula Energy Inc.	Niagara-on-the- Lake Hydro Inc.	Norfolk Power Distribution Inc.	North Bay Hydro Distribution Limited	Northern Ontario Wires Inc.
FINANCIAL INFORMATION						
Balance Sheet						
Assets						
Current Assets	\$ 25,789,743	\$ 37,098,820	\$ 5,638,997	\$ 11,000,853	\$ 25,555,528	\$ 4,248,371
Property Plant & Equipment						
Gross Property Plant & Equipment	\$ 100,122,812	\$ 224,714,264	\$ 36,620,613	\$ 76,144,401	\$ 74,473,232	\$ 6,635,651
Accumulated Amortization	\$ (51,229,759)	\$ (114,142,237)	\$ (17,220,940)	\$ (33,574,501)	\$ (43,929,480)	\$ (2,884,393)
Net Property Plant & Equipment	\$ 48,893,053	\$ 110,572,028	\$ 19,399,673	\$ 42,569,900	\$ 30,543,752	\$ 3,751,258
Regulatory Assets	\$ (834,884)	\$ (4,960,260)	\$ (360,390)	\$ (725,575)	\$ 2,171,824	\$ (733,628)
Other Non-Current Assets	\$ -	\$ -	\$ 463,884	\$ -	\$ -	\$ -
Total Assets	\$ 73,847,912	\$ 142,710,588	\$ 25,142,164	\$ 52,845,178	\$ 58,271,104	\$ 7,266,002
Liabilities						
Current Liabilities	\$ 12,532,558	\$ 32,395,355	\$ 7,740,216	\$ 10,079,584	\$ 8,040,650	\$ 1,857,468
Non-Current Liabilities excluding debt	\$ 4,690,003	\$ 5,007,271	\$ 981,273	\$ 929,573	\$ 4,956,847	\$ 42,028
Long Term Debt	\$ 23,942,821	\$ 29,842,316	\$ 6,566,333	\$ 16,614,923	\$ 19,511,601	\$ 2,090,430
Total Liabilities	41,165,382	67,244,942	15,287,822	27,624,079	32,509,098	3,989,926
Equity	\$ 32,682,530	\$ 75,465,647	\$ 9,854,342	\$ 25,221,099	\$ 25,762,007	\$ 3,276,075
Total Liabilities & Equity	\$ 73,847,912	\$ 142,710,588	\$ 25,142,164	\$ 52,845,178	\$ 58,271,104	\$ 7,266,002



Individual Electricity Distributors As of December 31st, 2008 (Alphabetically Listed)	Oakville Hydro Electricity Distribution Inc.	Orangeville Hydro Limited	Orillia Power Distribution Corporation	Oshawa PUC Networks Inc.	Ottawa River Power Corporation	PUC Distribution Inc.
FINANCIAL INFORMATION						
Balance Sheet						
Assets						
Current Assets	\$ 41,660,852	\$ 6,513,324	\$ 7,371,418	\$ 35,700,766	\$ 12,826,873	\$ 20,966,063
Property Plant & Equipment						
Gross Property Plant & Equipment	\$ 178,263,279	\$ 28,107,996	\$ 33,457,827	\$ 125,112,243	\$ 23,142,764	\$ 82,283,116
Accumulated Amortization	\$ (68,906,652)	\$ (14,945,573)	\$ (17,570,456)	\$ (74,487,859)	\$ (14,964,771)	\$ (44,922,665)
Net Property Plant & Equipment	\$ 109,356,627	\$ 13,162,423	\$ 15,887,371	\$ 50,624,384	\$ 8,177,993	\$ 37,360,451
Regulatory Assets	\$ (10,588,400)	\$ (1,268,728)	\$ (528,589)	\$ 2,491,614	\$ (3,124,544)	\$ (1,290,766)
Other Non-Current Assets	\$ 2,201,151	\$ 65,000	\$ 6,641	\$ -	\$ 11,274	\$ -
Total Assets	\$ 142,630,231	\$ 18,472,019	\$ 22,736,840	\$ 88,816,764	\$ 17,891,596	\$ 57,035,748
Liabilities						
Current Liabilities	\$ 28,968,209	\$ 3,469,453	\$ 4,413,880	\$ 13,183,655	\$ 3,926,840	\$ 11,290,087
Non-Current Liabilities excluding debt	\$ 271,335	\$ 713,160	\$ 1,127,438	\$ 14,211,030	\$ 672,662	\$ 258,471
Long Term Debt	\$ 59,177,201	\$ 6,046,799	\$ 9,762,000	\$ 30,064,000	\$ 5,585,838	\$ 26,534,040
Total Liabilities	88,416,745	10,229,412	15,303,317	57,458,685	10,185,339	38,082,598
Equity	\$ 54,213,486	\$ 8,242,607	\$ 7,433,523	\$ 31,358,079	\$ 7,706,257	\$ 18,953,150
Total Liabilities & Equity	\$ 142,630,231	\$ 18,472,019	\$ 22,736,840	\$ 88,816,764	\$ 17,891,596	\$ 57,035,748



Individual Electricity Distributors As of December 31st, 2008 (Alphabetically Listed)	Parry Sound Power Corporation	Peterborough Distribution Incorporated	Port Colborne Hydro Inc.	PowerStream Inc.	Renfrew Hydro Inc.	Rideau St. Lawrence Distribution Inc.
FINANCIAL INFORMATION						
Balance Sheet						
Assets						
Current Assets	\$ 3,882,471	\$ 18,381,951	\$ 3,080,655	\$ 182,122,225	\$ 3,965,123	\$ 3,059,378
Property Plant & Equipment						
Gross Property Plant & Equipment	\$ 10,752,888	\$ 70,744,069	\$ 11,108,565	\$ 933,777,077	\$ 11,544,650	\$ 5,223,143
Accumulated Amortization	\$ (6,761,274)	\$ (24,083,215)	\$ (1,290,644)	\$ (455,079,132)	\$ (7,402,264)	\$ (1,367,601)
Net Property Plant & Equipment	\$ 3,991,613	\$ 46,660,854	\$ 9,817,921	\$ 478,697,945	\$ 4,142,385	\$ 3,855,542
Regulatory Assets	\$ (339,587)	\$ 2,133,654	\$ 1,284,130	\$ (10,790,848)	\$ (852,794)	\$ 313,740
Other Non-Current Assets	\$ 100	\$ 1,725,000	\$ 193,800	\$ 12,168,715	\$ 12,924	\$ -
Total Assets	\$ 7,534,598	\$ 68,901,460	\$ 14,376,507	\$ 662,198,038	\$ 7,267,638	\$ 7,228,660
Liabilities						
Current Liabilities	\$ 2,353,985	\$ 10,357,911	\$ 14,919,152	\$ 108,052,459	\$ 3,792,178	\$ 3,555,478
Non-Current Liabilities excluding debt	\$ 143,541	\$ 1,374,421	\$ 241,554	\$ 25,812,681	\$ 196,668	\$ 120,306
Long Term Debt	\$ 2,433,728	\$ 29,443,584	\$ -	\$ 309,892,353	\$ 41,820	\$ 190,802
Total Liabilities	4,931,253	41,175,916	15,160,706	443,757,492	4,030,667	3,866,586
Equity	\$ 2,603,345	\$ 27,725,544	\$ (784,200)	\$ 218,440,546	\$ 3,236,971	\$ 3,362,074
Total Liabilities & Equity	\$ 7,534,598	\$ 68,901,460	\$ 14,376,507	\$ 662,198,038	\$ 7,267,638	\$ 7,228,660



Individual Electricity Distributors As of December 31st, 2008 (Alphabetically Listed)	Sioux Lookout Hydro Inc.	St. Thomas Energy Inc.	Thunder Bay Hydro Electricity Distribution Inc.	Tillsonburg Hydro Inc.	Toronto Hydro- Electric System Limited	Veridian Connections Inc.
FINANCIAL INFORMATION						
Balance Sheet						
Assets						
Current Assets	\$ 2,958,832	\$ 6,134,223	\$ 33,416,066	\$ 5,132,933	\$ 606,761,858	\$ 58,329,880
Property Plant & Equipment						
Gross Property Plant & Equipment	\$ 7,200,200	\$ 37,228,662	\$ 140,186,453	\$ 13,191,435	\$ 3,867,432,894	\$ 302,267,868
Accumulated Amortization	\$ (2,263,979)	\$ (17,965,232)	\$ (78,207,283)	\$ (7,583,761)	\$ (2,014,323,147)	\$ (159,103,136)
Net Property Plant & Equipment	\$ 4,936,221	\$ 19,263,430	\$ 61,979,170	\$ 5,607,674	\$ 1,853,109,747	\$ 143,164,732
Regulatory Assets	\$ 72,953	\$ (945,059)	\$ (6,438,947)	\$ (609,967)	\$ (57,672,048)	\$ (5,303,554)
Other Non-Current Assets	\$ -	\$ 854,401	\$ 548,575	\$ 500,757	\$ 8,229,913	\$ 41,031
Total Assets	\$ 7,968,006	\$ 25,306,994	\$ 89,504,864	\$ 10,631,397	\$ 2,410,429,470	\$ 196,232,089
Liabilities						
Current Liabilities	\$ 2,592,541	\$ 4,591,412	\$ 12,299,502	\$ 2,091,338	\$ 1,025,348,306	\$ 91,340,991
Non-Current Liabilities excluding debt	\$ 189,718	\$ 872,377	\$ 3,706,408	\$ 121,435	\$ 185,151,668	\$ 10,071,555
Long Term Debt	\$ 2,316,989	\$ 7,714,426	\$ 33,490,500	\$ -	\$ 422,287,784	\$ 23,974,734
Total Liabilities	5,099,248	13,178,215	49,496,411	2,212,772	1,632,787,758	125,387,280
Equity	\$ 2,868,757	\$ 12,128,779	\$ 40,008,454	\$ 8,418,624	\$ 777,641,712	\$ 70,844,809
Total Liabilities & Equity	\$ 7,968,006	\$ 25,306,994	\$ 89,504,864	\$ 10,631,397	\$ 2,410,429,470	\$ 196,232,089



Individual Electricity Distributors As of December 31st, 2008 (Alphabetically Listed)	Wasaga Distribution Inc.	Waterloo North Hydro Inc.	Welland Hydro- Electric System Corp.	Wellington North Power Inc.	West Coast Huron Energy Inc.	West Perth Power Inc.
FINANCIAL INFORMATION						
Balance Sheet						
Assets						
Current Assets	\$ 3,249,750	\$ 42,352,280	\$ 14,555,078	\$ 1,268,771	\$ 2,700,905	\$ 2,684,046
Property Plant & Equipment						
Gross Property Plant & Equipment	\$ 18,654,813	\$ 189,336,899	\$ 44,507,545	\$ 9,806,528	\$ 5,564,023	\$ 4,470,114
Accumulated Amortization	\$ (10,029,718)	\$ (90,632,780)	\$ (23,847,488)	\$ (5,213,350)	\$ (1,823,458)	\$ (2,814,174)
Net Property Plant & Equipment	\$ 8,625,095	\$ 98,704,119	\$ 20,660,057	\$ 4,593,179	\$ 3,740,565	\$ 1,655,940
Regulatory Assets	\$ (2,133,785)	\$ (13,426,410)	\$ (1,539,858)	\$ (545,830)	\$ (791,461)	\$ (305,418)
Other Non-Current Assets	\$ -	\$ 50,779	\$ 2,418,885	\$ -	\$ -	\$ -
Total Assets	\$ 9,741,061	\$ 127,680,768	\$ 36,094,162	\$ 5,316,120	\$ 5,650,009	\$ 4,034,568
Liabilities						
Current Liabilities	\$ (1,877,668)	\$ 22,957,340	\$ 5,270,918	\$ 1,673,577	\$ 402,483	\$ 1,079,537
Non-Current Liabilities excluding debt	\$ (99,379)	\$ 5,600,671	\$ 1,889,834	\$ 444,981	\$ 422,100	\$ (38,919)
Long Term Debt	\$ 3,593,269	\$ 40,402,432	\$ 13,499,953	\$ 1,285,015	\$ 974,454	\$ 1,183,391
Total Liabilities	1,616,221	68,960,443	20,660,705	3,403,574	1,799,037	2,224,009
Equity	\$ 8,124,840	\$ 58,720,325	\$ 15,433,457	\$ 1,912,546	\$ 3,850,972	\$ 1,810,559
Total Liabilities & Equity	\$ 9,741,061	\$ 127,680,768	\$ 36,094,162	\$ 5,316,120	\$ 5,650,009	\$ 4,034,568



Individual Electricity Distributors As of December 31st, 2008 (Alphabetically Listed)	Westario Power Inc.	Whitby Hydro Electric Corporation	Woodstock Hydro Services Inc.
FINANCIAL INFORMATION			
Balance Sheet			
Assets			
Current Assets	\$ 14,091,462	\$ 22,825,499	\$ 11,895,527
Property Plant & Equipment			
Gross Property Plant & Equipment	\$ 42,492,633	\$ 121,155,432	\$ 32,890,226
Accumulated Amortization	\$ (12,869,683)	\$ (59,554,996)	\$ (13,268,160)
Net Property Plant & Equipment	\$ 29,622,950	\$ 61,600,436	\$ 19,622,066
Regulatory Assets	\$ 923,699	\$ (5,336,270)	\$ (1,277,197)
Other Non-Current Assets	\$ 84,205	\$ -	\$ 169,500
Total Assets	\$ 44,722,316	\$ 79,089,665	\$ 30,409,897
Liabilities			
Current Liabilities	\$ 16,384,809	\$ 10,870,506	\$ 5,454,334
Non-Current Liabilities excluding debt	\$ 655,935	\$ 1,146,201	\$ (608,359)
Long Term Debt	\$ 5,260,461	\$ 28,337,942	\$ 10,941,862
Total Liabilities	22,301,205	40,354,649	15,787,837
Equity	\$ 22,421,111	\$ 38,735,016	\$ 14,622,059
Total Liabilities & Equity	\$ 44,722,316	\$ 79,089,665	\$ 30,409,897



Individual Electricity Distributors For the year ended December 31, 2008 (Alphabetically Listed)	Atikokan Hydro Inc.	Barrie Hydro Distribution Inc.	Bluewater Power Distribution Corporation	Brant County Power Inc.	Brantford Power Inc.	Burlington Hydro Inc.
FINANCIAL INFORMATION						
<u>Income Statement</u>						
<u>Revenue</u>						
Commodity & Distribution Revenue	\$ 2,836,273	\$ 142,768,983	\$ 85,477,369	\$ 24,799,441	\$ 90,080,504	\$ 148,094,963
Commodity Cost	\$ 1,790,804	\$ 112,076,539	\$ 68,972,661	\$ 18,562,207	\$ 74,148,841	\$ 119,783,988
Revenue from Distribution	\$ 1,045,469	\$ 30,692,444	\$ 16,504,708	\$ 6,237,234	\$ 15,931,663	\$ 28,310,976
Distribution Related Expenses						
Operation	\$ 296,121	\$ 2,917,700	\$ 2,085,274	\$ 536,068	\$ 1,018,908	\$ 4,383,027
Maintenance	\$ 88,816	\$ 2,366,933	\$ 169,039	\$ 703,571	\$ 1,757,147	\$ 2,411,913
Administration	\$ 460,087	\$ 5,101,589	\$ 6,854,339	\$ 2,093,848	\$ 4,917,942	\$ 6,158,297
Other Expenses	\$ -	\$ -	\$ -	\$ -	\$ -	\$ -
Amortization	\$ 155,943	\$ 9,359,366	\$ 4,020,433	\$ 1,041,813	\$ 3,029,972	\$ 6,205,927
Total Distribution Related Expenses	\$ 1,000,968	\$ 19,745,588	\$ 13,129,085	\$ 4,375,299	\$ 10,723,968	\$ 19,159,164
Other Income	\$ 9,854	\$ 327,263	\$ 1,032,589	\$ 67,850	\$ 518,897	\$ 281,206
Other Deductions	\$ -	\$ 32,027	\$ 36,644	\$ -	\$ 1,150	\$ 71,856
Earnings before Interest and Taxes	\$ 54,355	\$ 11,242,092	\$ 4,371,568	\$ 1,929,785	\$ 5,725,442	\$ 9,361,162
Interest Expense	\$ 13,207	\$ 3,250,469	\$ 1,394,658	\$ 371,604	\$ 2,341,359	\$ 3,551,971
Taxes	\$ 9,090	\$ 4,072,417	\$ 1,064,970	\$ 766,748	\$ 1,356,978	\$ 2,466,879
Earning before Unusual Items	\$ 32,058	\$ 3,919,206	\$ 1,911,940	\$ 791,433	\$ 2,027,105	\$ 3,342,311
Discontinued Operations Gains/(Losses)	\$ -	\$ -	\$ -	\$ -	\$ -	\$ -
Extraordinary & Other Gains/(Losses)	\$ -	\$ -	\$ -	\$ -	\$ -	\$ -
Net Income	\$ 32,058	\$ 3,919,206	\$ 1,911,940	\$ 791,433	\$ 2,027,105	\$ 3,342,311



Individual Electricity Distributors For the year ended December 31, 2008 (Alphabetically Listed)	COLLUS Power Corp.	Cambridge and North Dumfries Hydro Inc.	Canadian Niagara Power Inc.- Fort Erie	Centre Wellington Hydro Ltd.	Chapleau Public Utilities Corporation	Chatham-Kent Hydro Inc.
FINANCIAL INFORMATION						
<u>Income Statement</u>						
<u>Revenue</u>						
Commodity & Distribution Revenue	\$ 28,668,020	\$ 133,851,473	\$ 31,074,476	\$ 14,540,317	\$ 2,620,835	\$ 75,870,851
Commodity Cost	\$ 23,782,788	\$ 111,301,504	\$ 21,420,602	\$ 11,985,670	\$ 1,978,596	\$ 61,219,771
Revenue from Distribution	\$ 4,885,232	\$ 22,549,969	\$ 9,653,874	\$ 2,554,647	\$ 642,239	\$ 14,651,080
Distribution Related Expenses						
Operation	\$ 282,822	\$ 2,634,955	\$ 784,451	\$ 281,432	\$ 196,151	\$ 898,928
Maintenance	\$ 1,556,545	\$ 1,117,462	\$ 952,566	\$ 261,013	\$ -	\$ 1,031,063
Administration	\$ 1,755,915	\$ 5,328,064	\$ 2,712,307	\$ 1,022,334	\$ 393,628	\$ 3,749,220
Other Expenses	\$ -	\$ -	\$ -	\$ -	\$ -	\$ -
Amortization	\$ 854,329	\$ 5,789,866	\$ 2,460,316	\$ 536,369	\$ 44,612	\$ 3,595,770
Total Distribution Related Expenses	\$ 4,449,610	\$ 14,870,347	\$ 6,909,641	\$ 2,101,148	\$ 634,391	\$ 9,274,982
Other Income	\$ 171,931	\$ 574,177	\$ 199,273	\$ 258,388	\$ 46,329	\$ 124,062
Other Deductions	\$ -	\$ 3,899	\$ -	\$ 14,440	\$ -	\$ 200,000
Earnings before Interest and Taxes	\$ 607,552	\$ 8,249,900	\$ 2,943,507	\$ 697,447	\$ 54,177	\$ 5,300,160
Interest Expense	\$ 246,928	\$ 2,027,089	\$ 1,822,228	\$ 396,227	\$ 18,592	\$ 1,786,738
Taxes	\$ 80,802	\$ 2,416,720	\$ 431,631	\$ 159,844	\$ 7,982	\$ 1,069,954
Earning before Unusual Items	\$ 279,822	\$ 3,806,091	\$ 689,647	\$ 141,376	\$ 27,602	\$ 2,443,468
Discontinued Operations Gains/(Losses)	\$ -	\$ -	\$ -	\$ -	\$ -	\$ -
Extraordinary & Other Gains/(Losses)	\$ -	\$ -	\$ -	\$ -	\$ -	\$ -
Net Income	\$ 279,822	\$ 3,806,091	\$ 689,647	\$ 141,376	\$ 27,602	\$ 2,443,468



Individual Electricity Distributors For the year ended December 31, 2008 (Alphabetically Listed)	Clinton Power Corporation	Cooperative Hydro Embrun Inc.	E.L.K. Energy Inc.	ENWIN Utilities Ltd.	Eastern Ontario Power Inc.	Enersource Hydro Mississauga Inc.
FINANCIAL INFORMATION						
<u>Income Statement</u>						
<u>Revenue</u>						
Commodity & Distribution Revenue	\$ -	\$ 2,536,511	\$ 21,300,989	\$ 226,399,872	\$ 6,762,555	\$ 661,486,292
Commodity Cost	\$ -	\$ 1,940,972	\$ 16,432,333	\$ 179,720,184	\$ 5,125,489	\$ 549,393,168
Revenue from Distribution	\$ -	\$ 595,540	\$ 4,868,655	\$ 46,679,688	\$ 1,637,065	\$ 112,093,124
Distribution Related Expenses						
Operation	\$ -	\$ 38,023	\$ 211,133	\$ 2,194,905	\$ 323,683	\$ 16,445,047
Maintenance	\$ -	\$ 25,491	\$ 409,272	\$ 2,926,977	\$ 199,983	\$ 2,980,089
Administration	\$ -	\$ 341,119	\$ 1,552,136	\$ 16,816,636	\$ 662,491	\$ 25,507,915
Other Expenses	\$ -	\$ -	\$ -	\$ -	\$ -	\$ -
Amortization	\$ -	\$ 120,912	\$ 813,512	\$ 10,560,856	\$ 378,245	\$ 30,974,391
Total Distribution Related Expenses	\$ -	\$ 525,545	\$ 2,986,053	\$ 32,499,374	\$ 1,564,403	\$ 75,907,442
Other Income	\$ -	\$ 44,030	\$ 495,052	\$ 2,146,091	\$ 63,854	\$ 13,631,019
Other Deductions	\$ -	\$ 1,845	\$ -	\$ 14,743	\$ -	\$ -
Earnings before Interest and Taxes	\$ -	\$ 112,180	\$ 2,377,654	\$ 16,311,662	\$ 136,516	\$ 49,816,701
Interest Expense	\$ -	\$ 1,334	\$ 292,253	\$ 4,261,663	\$ 307,630	\$ 19,050,859
Taxes	\$ -	\$ 29,268	\$ 853,873	\$ 4,493,040	\$ (44,271)	\$ 12,731,717
Earning before Unusual Items	\$ -	\$ 81,578	\$ 1,231,527	\$ 7,556,959	-\$ 126,842	\$ 18,034,125
Discontinued Operations Gains/(Losses)	\$ -	\$ -	\$ -	\$ -	\$ -	\$ -
Extraordinary & Other Gains/(Losses)	\$ -	\$ -	\$ -	\$ -	\$ -	\$ -
Net Income	\$ -	\$ 81,578	\$ 1,231,527	\$ 7,556,959	\$ (126,842)	\$ 18,034,125



Individual Electricity Distributors For the year ended December 31, 2008 (Alphabetically Listed)	Erie Thames Powerlines Corporation	Espanola Regional Hydro Distribution Corporation	Essex Powerlines Corporation	Festival Hydro Inc.	Fort Frances Power Corporation	Grand Valley Energy Inc.
FINANCIAL INFORMATION						
<u>Income Statement</u>						
<u>Revenue</u>						
Commodity & Distribution Revenue	\$ 35,095,380	\$ 6,002,170	\$ 53,667,117	\$ 52,870,477	\$ 7,478,968	\$ 936,531
Commodity Cost	\$ 28,047,757	\$ 4,716,670	\$ 43,672,086	\$ 43,327,319	\$ 5,889,409	\$ 690,812
Revenue from Distribution	\$ 7,047,623	\$ 1,285,499	\$ 9,995,031	\$ 9,543,158	\$ 1,589,559	\$ 245,719
Distribution Related Expenses						
Operation	\$ 33,492	\$ 252,411	\$ 749,394	\$ 522,372	\$ 161,730	\$ 18,773
Maintenance	\$ 1,723,135	\$ 198,999	\$ 1,057,128	\$ 846,995	\$ 126,542	\$ 13,636
Administration	\$ 3,080,984	\$ 552,478	\$ 3,692,377	\$ 2,234,414	\$ 962,611	\$ 180,424
Other Expenses	\$ -	\$ -	\$ -	\$ -	\$ -	\$ -
Amortization	\$ 949,932	\$ 187,403	\$ 2,247,850	\$ 2,393,253	\$ 372,046	\$ 42,794
Total Distribution Related Expenses	\$ 5,787,543	\$ 1,191,291	\$ 7,746,749	\$ 5,997,035	\$ 1,622,929	\$ 255,627
Other Income	\$ 314,321	\$ 84,962	\$ 317,061	\$ 317,711	\$ 29,797	\$ 12,738
Other Deductions	\$ -	\$ -	\$ -	\$ -	\$ -	\$ -
Earnings before Interest and Taxes	\$ 1,574,401	\$ 179,171	\$ 2,565,343	\$ 3,863,834	-\$ 3,573	\$ 2,830
Interest Expense	\$ 604,224	\$ 231,506	\$ 660,845	\$ 1,170,471	\$ 4,240	\$ 1,109
Taxes	\$ 410,887	\$ 22,504	\$ 875,717	\$ 931,500	\$ 9,344	\$ -
Earning before Unusual Items	\$ 559,290	-\$ 74,839	\$ 1,028,782	\$ 1,761,863	-\$ 17,156	\$ 1,721
Discontinued Operations Gains/(Losses)	\$ -	\$ -	\$ -	\$ -	\$ -	\$ -
Extraordinary & Other Gains/(Losses)	\$ -	\$ -	\$ -	\$ -	\$ -	\$ -
Net Income	\$ 559,290	\$ (74,839)	\$ 1,028,782	\$ 1,761,863	\$ (17,156)	\$ 1,721



Individual Electricity Distributors For the year ended December 31, 2008 (Alphabetically Listed)	Great Lakes Power Ltd.	Greater Sudbury Hydro Inc.	Grimsby Power Incorporated	Guelph Hydro Electric Systems Inc.	Haldimand County Hydro Inc.	Halton Hills Hydro Inc.
FINANCIAL INFORMATION						
<u>Income Statement</u>						
<u>Revenue</u>						
Commodity & Distribution Revenue	\$ 32,399,078	\$ 94,040,638	\$ 16,625,470	\$ 136,297,636	\$ 39,368,601	\$ 45,281,781
Commodity Cost	\$ 13,868,606	\$ 71,781,064	\$ 13,124,063	\$ 111,998,224	\$ 27,256,105	\$ 36,043,279
Revenue from Distribution	\$ 18,530,472	\$ 22,259,574	\$ 3,501,407	\$ 24,299,412	\$ 12,112,497	\$ 9,238,502
Distribution Related Expenses						
Operation	\$ 1,491,348	\$ 3,484,250	\$ 200,472	\$ 1,130,188	\$ 1,222,064	\$ 695,529
Maintenance	\$ 2,979,950	\$ 1,920,318	\$ 409,935	\$ 1,594,974	\$ 2,660,401	\$ 751,353
Administration	\$ 4,059,268	\$ 5,318,919	\$ 1,155,579	\$ 7,385,564	\$ 3,154,468	\$ 3,635,039
Other Expenses	\$ -	\$ -	\$ -	\$ -	\$ -	\$ -
Amortization	\$ 3,727,967	\$ 4,514,642	\$ 842,962	\$ 6,028,523	\$ 2,442,300	\$ 2,169,528
Total Distribution Related Expenses	\$ 12,258,532	\$ 15,238,129	\$ 2,608,948	\$ 16,139,249	\$ 9,479,233	\$ 7,251,449
Other Income	\$ 489,849	\$ 685,244	\$ 213,549	\$ 1,261,961	\$ 1,544,298	\$ 637,894
Other Deductions	\$ 7,152	\$ 15,000	\$ -	\$ 112,495	\$ -	\$ 29,137
Earnings before Interest and Taxes	\$ 6,754,636	\$ 7,691,689	\$ 1,106,008	\$ 9,309,629	\$ 4,177,562	\$ 2,595,810
Interest Expense	\$ 1,549,897	\$ 4,470,703	\$ 472,053	\$ 2,814,385	\$ 792,201	\$ 1,056,006
Taxes	\$ 1,704,771	\$ 2,703,581	\$ 187,506	\$ 1,710,175	\$ 1,392,211	\$ 858,591
Earning before Unusual Items	\$ 3,499,969	\$ 517,404	\$ 446,450	\$ 4,785,069	\$ 1,993,151	\$ 681,213
Discontinued Operations Gains/(Losses)	\$ -	\$ -	\$ -	\$ -	\$ -	\$ -
Extraordinary & Other Gains/(Losses)	\$ -	\$ -	\$ -	\$ -	\$ -	\$ -
Net Income	\$ 3,499,969	\$ 517,404	\$ 446,450	\$ 4,785,069	\$ 1,993,151	\$ 681,213



Individual Electricity Distributors For the year ended December 31, 2008 (Alphabetically Listed)	Hearst Power Distribution Company Limited	Horizon Utilities Corporation	Hydro 2000 Inc.	Hydro Hawkesbury Inc.	Hydro One Brampton Networks Inc.	Hydro One Networks Inc.
FINANCIAL INFORMATION						
<u>Income Statement</u>						
<u>Revenue</u>						
Commodity & Distribution Revenue	\$ 6,897,950	\$ 464,843,318	\$ 2,285,773	\$ 14,762,412	\$ 339,892,231	\$ 2,907,633,400
Commodity Cost	\$ 6,249,357	\$ 374,040,656	\$ 1,996,170	\$ 13,590,055	\$ 275,847,971	\$ 1,902,668,500
Revenue from Distribution	\$ 648,592	\$ 90,802,662	\$ 289,603	\$ 1,172,357	\$ 64,044,261	\$ 1,004,964,900
Distribution Related Expenses						
Operation	\$ 77,447	\$ 11,661,608	\$ 463	\$ 64,402	\$ 3,544,751	\$ 63,713,300
Maintenance	\$ 282,331	\$ 6,397,229	\$ 8,876	\$ 159,889	\$ 3,374,105	\$ 226,349,300
Administration	\$ 336,020	\$ 22,274,666	\$ 234,864	\$ 573,132	\$ 11,354,825	\$ 174,951,000
Other Expenses	\$ -	\$ -	\$ -	\$ -	\$ -	\$ -
Amortization	\$ 110,000	\$ 22,176,523	\$ 47,544	\$ 148,065	\$ 16,216,369	\$ 266,491,600
Total Distribution Related Expenses	\$ 805,798	\$ 62,510,026	\$ 291,747	\$ 945,488	\$ 34,490,050	\$ 731,505,200
Other Income	\$ 187,965	\$ 2,799,383	\$ 18,560	\$ 127,252	\$ 939,086	\$ 37,121,600
Other Deductions	\$ -	\$ -	\$ -	\$ -	\$ -	\$ -
Earnings before Interest and Taxes	\$ 30,759	\$ 31,092,019	\$ 16,415	\$ 354,120	\$ 30,493,297	\$ 310,581,300
Interest Expense	\$ 73,010	\$ 9,133,155	\$ 18,659	\$ 190,125	\$ 10,644,121	\$ 118,890,800
Taxes	\$ 1,800	\$ 7,044,362	\$ (14,517)	\$ 100,507	\$ 8,893,892	\$ 76,068,700
Earning before Unusual Items	-\$ 44,051	\$ 14,914,502	\$ 12,273	\$ 63,488	\$ 10,955,284	\$ 115,621,800
Discontinued Operations Gains/(Losses)	\$ -	\$ -	\$ -	\$ -	\$ -	\$ -
Extraordinary & Other Gains/(Losses)	\$ -	\$ -	\$ -	\$ -	\$ -	\$ -
Net Income	\$ (44,051)	\$ 14,914,502	\$ 12,273	\$ 63,488	\$ 10,955,284	\$ 115,621,800



Individual Electricity Distributors For the year ended December 31, 2008 (Alphabetically Listed)	Hydro Ottawa Limited	Innisfil Hydro Distribution Systems Limited	Kenora Hydro Electric Corporation Ltd.	Kingston Hydro Corporation	Kitchener-Wilmot Hydro Inc.	Lakefront Utilities Inc.
FINANCIAL INFORMATION						
<u>Income Statement</u>						
<u>Revenue</u>						
Commodity & Distribution Revenue	\$ 683,899,303	\$ 24,307,681	\$ 9,694,298	\$ 59,158,310	\$ 171,476,263	\$ 23,825,099
Commodity Cost	\$ 544,192,016	\$ 17,244,343	\$ 7,570,393	\$ 49,040,997	\$ 137,762,655	\$ 19,742,669
Revenue from Distribution	\$ 139,707,287	\$ 7,063,338	\$ 2,123,905	\$ 10,117,313	\$ 33,713,608	\$ 4,082,430
Distribution Related Expenses						
Operation	\$ 11,752,561	\$ 723,678	\$ 139,373	\$ 1,559,653	\$ 3,016,284	\$ 617,178
Maintenance	\$ 5,183,949	\$ 563,045	\$ 303,518	\$ 850,416	\$ 3,968,318	\$ 77,336
Administration	\$ 35,689,252	\$ 2,268,194	\$ 1,190,927	\$ 2,790,233	\$ 5,564,333	\$ 1,190,108
Other Expenses	\$ -	\$ -	\$ -	\$ -	\$ -	\$ -
Amortization	\$ 39,479,871	\$ 1,758,166	\$ 379,435	\$ 1,941,666	\$ 9,253,850	\$ 838,632
Total Distribution Related Expenses	\$ 92,105,632	\$ 5,313,082	\$ 2,013,254	\$ 7,141,969	\$ 21,802,785	\$ 2,723,253
Other Income	\$ 3,913,337	\$ 194,997	\$ 146,012	\$ 150,867	\$ 1,344,246	\$ 821,667
Other Deductions	\$ 113,963	\$ 1,100	\$ -	\$ -	\$ 80,200	\$ -
Earnings before Interest and Taxes	\$ 51,401,029	\$ 1,944,153	\$ 256,663	\$ 3,126,210	\$ 13,174,869	\$ 2,180,843
Interest Expense	\$ 15,162,649	\$ 662,712	\$ 173,788	\$ 892,467	\$ 4,943,543	\$ 532,897
Taxes	\$ 15,126,105	\$ 426,421	\$ 34,963	\$ 1,105,010	\$ 3,329,081	\$ 600,504
Earning before Unusual Items	\$ 21,112,275	\$ 855,021	\$ 47,912	\$ 1,128,733	\$ 4,902,245	\$ 1,047,443
Discontinued Operations Gains/(Losses)	\$ -	\$ -	\$ -	\$ -	\$ -	\$ -
Extraordinary & Other Gains/(Losses)	\$ 675,680	\$ -	\$ -	\$ -	\$ 257,280	\$ -
Net Income	\$ 21,787,955	\$ 855,021	\$ 47,912	\$ 1,128,733	\$ 5,159,525	\$ 1,047,443



Individual Electricity Distributors For the year ended December 31, 2008 (Alphabetically Listed)	Lakeland Power Distribution Ltd.	London Hydro Inc.	Middlesex Power Distribution Corporation	Midland Power Utility Corporation	Milton Hydro Distribution Inc.	Newbury Power Inc.
FINANCIAL INFORMATION						
<u>Income Statement</u>						
<u>Revenue</u>						
Commodity & Distribution Revenue	\$ 19,773,249	\$ 299,026,984	\$ 17,805,425	\$ 19,219,389	\$ 61,236,532	\$ -
Commodity Cost	\$ 15,615,852	\$ 243,659,390	\$ 14,497,975	\$ 16,290,687	\$ 49,997,910	\$ -
Revenue from Distribution	\$ 4,157,397	\$ 55,367,594	\$ 3,307,450	\$ 2,928,702	\$ 11,238,622	\$ -
Distribution Related Expenses						
Operation	\$ 146,605	\$ 6,639,274	\$ 119,867	\$ 290,259	\$ 683,018	\$ -
Maintenance	\$ 863,307	\$ 6,275,516	\$ 324,060	\$ 408,020	\$ 879,911	\$ -
Administration	\$ 1,663,849	\$ 13,933,230	\$ 975,096	\$ 1,053,035	\$ 3,553,464	\$ -
Other Expenses	\$ -	\$ -	\$ -	\$ -	\$ -	\$ -
Amortization	\$ 887,563	\$ 15,694,784	\$ 626,136	\$ 610,282	\$ 2,744,199	\$ -
Total Distribution Related Expenses	\$ 3,561,324	\$ 42,542,804	\$ 2,045,158	\$ 2,361,595	\$ 7,860,592	\$ -
Other Income	\$ 161,918	\$ 1,917,272	\$ 78,885	\$ 110,029	\$ 627,845	\$ -
Other Deductions	\$ -	\$ 230,794	\$ 10,000	\$ 200	\$ -	\$ -
Earnings before Interest and Taxes	\$ 757,990	\$ 14,511,268	\$ 1,331,177	\$ 676,935	\$ 4,005,875	\$ -
Interest Expense	\$ 186,640	\$ 4,438,896	\$ 344,812	\$ 60,373	\$ 1,152,003	\$ -
Taxes	\$ 184,646	\$ 3,231,771	\$ 164,073	\$ 302,469	\$ 885,047	\$ -
Earning before Unusual Items	\$ 386,704	\$ 6,840,601	\$ 822,292	\$ 314,093	\$ 1,968,825	\$ -
Discontinued Operations Gains/(Losses)	\$ -	\$ -	\$ -	\$ -	\$ -	\$ -
Extraordinary & Other Gains/(Losses)	\$ -	\$ -	\$ -	\$ -	\$ -	\$ -
Net Income	\$ 386,704	\$ 6,840,601	\$ 822,292	\$ 314,093	\$ 1,968,825	\$ -



Individual Electricity Distributors For the year ended December 31, 2008 (Alphabetically Listed)	Newmarket - Tay Power Distribution Ltd.	Niagara Peninsula Energy Inc.	Niagara-on-the- Lake Hydro Inc.	Norfolk Power Distribution Inc.	North Bay Hydro Distribution Limited	Northern Ontario Wires Inc.
FINANCIAL INFORMATION						
<u>Income Statement</u>						
<u>Revenue</u>						
Commodity & Distribution Revenue	\$ 69,887,359	\$ 122,969,629	\$ 17,354,742	\$ 38,331,692	\$ 51,625,744	\$ 11,673,025
Commodity Cost	\$ 54,035,453	\$ 95,532,348	\$ 12,601,586	\$ 28,241,801	\$ 41,077,195	\$ 9,242,205
Revenue from Distribution	\$ 15,851,906	\$ 27,437,281	\$ 4,753,156	\$ 10,089,891	\$ 10,548,549	\$ 2,430,820
Distribution Related Expenses						
Operation	\$ 998,962	\$ 3,198,913	\$ 372,078	\$ 1,185,564	\$ 732,896	\$ 420,138
Maintenance	\$ 1,165,352	\$ 2,320,968	\$ 445,744	\$ 1,507,433	\$ 968,191	\$ 219,101
Administration	\$ 4,197,004	\$ 7,272,732	\$ 915,748	\$ 2,563,478	\$ 3,879,560	\$ 1,305,780
Other Expenses	\$ -	\$ -	\$ -	\$ -	\$ -	\$ -
Amortization	\$ 3,748,834	\$ 7,732,754	\$ 1,223,959	\$ 2,349,864	\$ 2,322,968	\$ 294,120
Total Distribution Related Expenses	\$ 10,110,153	\$ 20,525,368	\$ 2,957,530	\$ 7,606,339	\$ 7,903,616	\$ 2,239,140
Other Income	\$ 254,219	\$ 254,288	\$ (33,470)	\$ 117,902	\$ 795,189	\$ 78,387
Other Deductions	\$ -	\$ -	\$ -	\$ 6,231	\$ 6,000	\$ 1,443
Earnings before Interest and Taxes	\$ 5,995,972	\$ 7,166,200	\$ 1,762,157	\$ 2,595,224	\$ 3,434,122	\$ 268,625
Interest Expense	\$ 1,503,931	\$ 2,869,208	\$ 719,887	\$ 1,319,910	\$ 1,199,435	\$ 157,961
Taxes	\$ 1,868,272	\$ 1,704,051	\$ 323,801	\$ 733,730	\$ 818,829	\$ 18,680
Earning before Unusual Items	\$ 2,623,769	\$ 2,592,941	\$ 718,469	\$ 541,583	\$ 1,415,859	\$ 91,984
Discontinued Operations Gains/(Losses)	\$ -	\$ -	\$ -	\$ -	\$ -	\$ -
Extraordinary & Other Gains/(Losses)	\$ -	\$ -	\$ -	\$ -	\$ -	\$ -
Net Income	\$ 2,623,769	\$ 2,592,941	\$ 718,469	\$ 541,583	\$ 1,415,859	\$ 91,984



Individual Electricity Distributors For the year ended December 31, 2008 (Alphabetically Listed)	Oakville Hydro Electricity Distribution Inc.	Orangeville Hydro Limited	Orillia Power Distribution Corporation	Oshawa PUC Networks Inc.	Ottawa River Power Corporation	PUC Distribution Inc.
FINANCIAL INFORMATION						
<u>Income Statement</u>						
<u>Revenue</u>						
Commodity & Distribution Revenue	\$ 144,173,001	\$ 21,901,424	\$ 29,633,864	\$ 97,653,449	\$ 18,354,240	\$ 61,914,872
Commodity Cost	\$ 114,610,846	\$ 17,524,426	\$ 22,790,870	\$ 77,470,032	\$ 14,735,276	\$ 47,481,897
Revenue from Distribution	\$ 29,562,155	\$ 4,376,998	\$ 6,842,994	\$ 20,183,416	\$ 3,618,963	\$ 14,432,975
Distribution Related Expenses						
Operation	\$ 3,426,867	\$ 320,147	\$ 1,011,779	\$ 293,376	\$ 339,943	\$ 2,385,895
Maintenance	\$ 1,914,858	\$ 444,363	\$ 690,100	\$ 1,218,234	\$ 559,145	\$ 1,786,399
Administration	\$ 4,779,151	\$ 1,430,787	\$ 2,115,890	\$ 7,297,273	\$ 1,476,544	\$ 3,122,044
Other Expenses	\$ -	\$ -	\$ -	\$ -	\$ -	\$ -
Amortization	\$ 8,946,738	\$ 927,631	\$ 1,409,013	\$ 4,286,600	\$ 678,000	\$ 3,093,189
Total Distribution Related Expenses	\$ 19,067,613	\$ 3,122,928	\$ 5,226,783	\$ 13,095,483	\$ 3,053,632	\$ 10,387,527
Other Income	\$ 1,512,885	\$ 214,996	\$ 162,201	\$ 1,111,925	\$ 255,040	\$ 984,703
Other Deductions	\$ -	\$ 4,965	\$ 20,475	\$ 31,387	\$ -	\$ -
Earnings before Interest and Taxes	\$ 12,007,427	\$ 1,464,101	\$ 1,757,937	\$ 8,168,471	\$ 820,371	\$ 5,030,151
Interest Expense	\$ 4,912,842	\$ 409,882	\$ 647,494	\$ 1,931,449	\$ 404,973	\$ 3,061,981
Taxes	\$ 3,020,364	\$ 410,151	\$ 508,491	\$ 2,285,156	\$ 92,372	\$ 1,193,744
Earning before Unusual Items	\$ 4,074,220	\$ 644,068	\$ 601,952	\$ 3,951,866	\$ 323,026	\$ 774,426
Discontinued Operations Gains/(Losses)	\$ -	\$ -	\$ -	\$ -	\$ -	\$ -
Extraordinary & Other Gains/(Losses)	\$ 342,122	\$ -	\$ -	\$ -	\$ -	\$ -
Net Income	\$ 4,416,343	\$ 644,068	\$ 601,952	\$ 3,951,866	\$ 323,026	\$ 774,426



Individual Electricity Distributors For the year ended December 31, 2008 (Alphabetically Listed)	Parry Sound Power Corporation	Peterborough Distribution Incorporated	Port Colborne Hydro Inc.	PowerStream Inc.	Renfrew Hydro Inc.	Rideau St. Lawrence Distribution Inc.
FINANCIAL INFORMATION						
<u>Income Statement</u>						
<u>Revenue</u>						
Commodity & Distribution Revenue	\$ 8,495,104	\$ 71,936,539	\$ 19,531,644	\$ 604,257,740	\$ 9,308,601	\$ 10,780,199
Commodity Cost	\$ 6,627,109	\$ 58,146,418	\$ 14,658,672	\$ 485,198,888	\$ 7,625,333	\$ 8,771,341
Revenue from Distribution	\$ 1,867,995	\$ 13,790,122	\$ 4,872,973	\$ 119,058,853	\$ 1,683,268	\$ 2,008,858
Distribution Related Expenses						
Operation	\$ 57,279	\$ 1,179,876	\$ 717,505	\$ 8,577,116	\$ 247,141	\$ 189,498
Maintenance	\$ 268,637	\$ 2,661,254	\$ 367,724	\$ 7,768,313	\$ 158,838	\$ 268,548
Administration	\$ 890,198	\$ 3,168,082	\$ 2,921,160	\$ 30,036,002	\$ 647,664	\$ 1,025,025
Other Expenses	\$ -	\$ -	\$ -	\$ -	\$ -	\$ -
Amortization	\$ 375,674	\$ 3,231,090	\$ 332,212	\$ 31,383,220	\$ 376,024	\$ 228,996
Total Distribution Related Expenses	\$ 1,591,788	\$ 10,240,302	\$ 4,338,601	\$ 77,764,650	\$ 1,429,667	\$ 1,712,066
Other Income	\$ 151,417	\$ 231,719	\$ 42,146	\$ 5,409,034	\$ 76,400	\$ 53,219
Other Deductions	\$ -	\$ -	\$ -	\$ 46,121	\$ -	\$ 1,112
Earnings before Interest and Taxes	\$ 427,624	\$ 3,781,539	\$ 576,517	\$ 46,657,116	\$ 330,001	\$ 348,899
Interest Expense	\$ 201,565	\$ 1,493,319	\$ 353,096	\$ 19,378,334	\$ 206,255	\$ 89,794
Taxes	\$ 56,441	\$ 943,950	\$ 150,230	\$ 9,476,738	\$ 25,099	\$ 45,091
Earning before Unusual Items	\$ 169,618	\$ 1,344,271	\$ 73,191	\$ 17,802,044	\$ 98,648	\$ 214,014
Discontinued Operations Gains/(Losses)	\$ -	\$ -	\$ -	\$ -	\$ -	\$ -
Extraordinary & Other Gains/(Losses)	\$ -	\$ 17,625	\$ -	\$ -	\$ -	\$ -
Net Income	\$ 169,618	\$ 1,361,895	\$ 73,191	\$ 17,802,044	\$ 98,648	\$ 214,014



Individual Electricity Distributors For the year ended December 31, 2008 (Alphabetically Listed)	Sioux Lookout Hydro Inc.	St. Thomas Energy Inc.	Thunder Bay Hydro Electricity Distribution Inc.	Tillsonburg Hydro Inc.	Toronto Hydro- Electric System Limited	Veridian Connections Inc.
FINANCIAL INFORMATION						
<u>Income Statement</u>						
<u>Revenue</u>						
Commodity & Distribution Revenue	\$ 7,179,137	\$ 31,982,692	\$ 84,071,748	\$ 18,156,720	\$ 2,340,527,241	\$ 231,298,908
Commodity Cost	\$ 5,560,389	\$ 25,306,070	\$ 66,488,637	\$ 15,646,669	\$ 1,869,556,695	\$ 185,991,107
Revenue from Distribution	\$ 1,618,748	\$ 6,676,621	\$ 17,583,111	\$ 2,510,051	\$ 470,970,546	\$ 45,307,801
Distribution Related Expenses						
Operation	\$ 426,322	\$ 631,201	\$ 3,057,223	\$ 613,377	\$ 45,751,002	\$ 3,717,394
Maintenance	\$ 91,129	\$ 423,486	\$ 2,905,245	\$ 162,751	\$ 41,307,101	\$ 1,941,489
Administration	\$ 629,527	\$ 2,042,161	\$ 5,722,464	\$ 855,637	\$ 81,035,524	\$ 14,310,675
Other Expenses	\$ -	\$ -	\$ -	\$ -	\$ -	\$ -
Amortization	\$ 252,789	\$ 1,285,347	\$ 4,693,019	\$ 459,467	\$ 149,019,008	\$ 11,754,581
Total Distribution Related Expenses	\$ 1,399,767	\$ 4,382,196	\$ 16,377,950	\$ 2,091,232	\$ 317,112,635	\$ 31,724,139
Other Income	\$ 37,575	\$ 111,675	\$ 719,532	\$ 68,845	\$ 17,499,795	\$ 2,817,844
Other Deductions	\$ -	\$ -	\$ -	\$ -	\$ -	\$ 54,044
Earnings before Interest and Taxes	\$ 256,556	\$ 2,406,100	\$ 1,924,692	\$ 487,664	\$ 171,357,706	\$ 16,347,462
Interest Expense	\$ 135,717	\$ 644,786	\$ 217,031	\$ 36,176	\$ 72,242,703	\$ 5,401,023
Taxes	\$ 25,818	\$ 799,003	\$ 1,136,500	\$ 45,648	\$ 22,981,066	\$ 4,297,652
Earning before Unusual Items	\$ 95,021	\$ 962,312	\$ 571,161	\$ 405,841	\$ 76,133,937	\$ 6,648,787
Discontinued Operations Gains/(Losses)	\$ -	\$ -	\$ -	\$ -	\$ -	\$ -
Extraordinary & Other Gains/(Losses)	\$ -	\$ -	\$ -	\$ -	\$ -	\$ -
Net Income	\$ 95,021	\$ 962,312	\$ 571,161	\$ 405,841	\$ 76,133,937	\$ 6,648,787



Individual Electricity Distributors For the year ended December 31, 2008 (Alphabetically Listed)	Wasaga Distribution Inc.	Waterloo North Hydro Inc.	Welland Hydro- Electric System Corp.	Wellington North Power Inc.	West Coast Huron Energy Inc.	West Perth Power Inc.
FINANCIAL INFORMATION						
<u>Income Statement</u>						
<u>Revenue</u>						
Commodity & Distribution Revenue	\$ 12,186,407	\$ 118,610,510	\$ 42,487,946	\$ 7,553,819	\$ 8,189,226	\$ 5,504,867
Commodity Cost	\$ 8,614,779	\$ 92,994,631	\$ 35,106,919	\$ 5,976,075	\$ 6,470,053	\$ 4,745,253
Revenue from Distribution	\$ 3,571,628	\$ 25,615,878	\$ 7,381,027	\$ 1,577,744	\$ 1,719,173	\$ 759,614
Distribution Related Expenses						
Operation	\$ 102,599	\$ 3,638,282	\$ 1,208,913	\$ 272,176	\$ 275,901	\$ 139,158
Maintenance	\$ 565,474	\$ 1,730,289	\$ 1,113,317	\$ 170,399	\$ 116,087	\$ 139,116
Administration	\$ 1,220,482	\$ 3,573,128	\$ 2,225,077	\$ 746,208	\$ 907,066	\$ 321,734
Other Expenses	\$ -	\$ -	\$ -	\$ -	\$ -	\$ -
Amortization	\$ 688,822	\$ 6,358,132	\$ 1,577,902	\$ 322,156	\$ 232,816	\$ 186,201
Total Distribution Related Expenses	\$ 2,577,378	\$ 15,299,832	\$ 6,125,208	\$ 1,510,939	\$ 1,531,870	\$ 786,209
Other Income	\$ 112,736	\$ 859,672	\$ 270,603	\$ 46,434	\$ 145,259	\$ 60,375
Other Deductions	\$ -	\$ 14,150	\$ 22,301	\$ 181	\$ -	\$ 2
Earnings before Interest and Taxes	\$ 1,106,986	\$ 11,161,569	\$ 1,504,120	\$ 113,058	\$ 332,562	\$ 33,778
Interest Expense	\$ 219,285	\$ 3,580,484	\$ 882,549	\$ 119,314	\$ 85,136	\$ 93,970
Taxes	\$ 304,254	\$ 2,116,796	\$ 428,212	\$ 606	\$ 41,822	\$ 3,517
Earning before Unusual Items	\$ 583,448	\$ 5,464,290	\$ 193,359	-\$ 6,861	\$ 205,604	-\$ 63,708
Discontinued Operations Gains/(Losses)	\$ -	\$ -	\$ -	\$ -	\$ -	\$ -
Extraordinary & Other Gains/(Losses)	\$ -	\$ -	\$ 271,632	\$ -	\$ -	\$ -
Net Income	\$ 583,448	\$ 5,464,290	\$ 464,991	\$ (6,861)	\$ 205,604	\$ (63,708)



Individual Electricity Distributors For the year ended December 31, 2008 (Alphabetically Listed)	Westario Power Inc.	Whitby Hydro Electric Corporation	Woodstock Hydro Services Inc.
FINANCIAL INFORMATION			
<u>Income Statement</u>			
<u>Revenue</u>			
Commodity & Distribution Revenue	\$ 39,574,724	\$ 81,918,251	\$ 34,459,840
Commodity Cost	\$ 31,300,617	\$ 63,151,126	\$ 27,420,436
Revenue from Distribution	\$ 8,274,107	\$ 18,767,125	\$ 7,039,404
Distribution Related Expenses			
Operation	\$ 1,048,951	\$ 1,832,230	\$ 787,716
Maintenance	\$ 1,341,750	\$ 1,638,550	\$ 532,855
Administration	\$ 2,612,881	\$ 4,736,117	\$ 1,941,863
Other Expenses	\$ -	\$ -	\$ -
Amortization	\$ 1,500,443	\$ 4,401,237	\$ 1,766,770
Total Distribution Related Expenses	\$ 6,504,025	\$ 12,608,134	\$ 5,029,204
Other Income	\$ 521,695	\$ 30,277	\$ 322,094
Other Deductions	\$ 8,966	\$ -	\$ 550
Earnings before Interest and Taxes	\$ 2,282,811	\$ 6,189,268	\$ 2,331,744
Interest Expense	\$ 2,083,081	\$ 2,081,542	\$ 853,961
Taxes	\$ 141,696	\$ 2,794,834	\$ 579,446
Earning before Unusual Items	\$ 58,034	\$ 1,312,892	\$ 898,337
Discontinued Operations Gains/(Losses)	\$ -	\$ -	\$ -
Extraordinary & Other Gains/(Losses)	\$ -	\$ -	\$ -
Net Income	\$ 58,034	\$ 1,312,892	\$ 898,337



Individual Electricity Distributors For the year ended December 31, 2008 (Alphabetically Listed)	Atikokan Hydro Inc.	Barrie Hydro Distribution Inc.	Bluewater Power Distribution Corporation	Brant County Power Inc.	Brantford Power Inc.	Burlington Hydro Inc.
<u>Financial Ratios</u>						
Liquidity Ratios						
Current Ratio (Current Assets/Current Liabilities)	1.81	1.28	2.16	2.17	1.94	2.29
Leverage Ratios						
Debt Ratio (Long Term Debt/Total Assets)	49%	42%	33%	21%	44%	37%
Debt to Equity Ratio (Long Term Debt/Total Equity)	1.42	1.16	0.88	0.33	1.07	0.84
Interest Coverage (EBIT/Interst Charges)	4.12	3.46	3.13	5.19	2.45	2.64
Profitability Ratios						
Financial Statement Return on Assets (Net Income/Total Assets)	1.17%	2.33%	3.25%	3.25%	2.65%	2.60%
Financial Statement Return on Equity (Net Income/Total Equity)	3.43%	6.48%	8.70%	5.21%	6.47%	5.85%



Individual Electricity Distributors For the year ended December 31, 2008 (Alphabetically Listed)	COLLUS Power Corp.	Cambridge and North Dumfries Hydro Inc.	Canadian Niagara Power Inc.- Fort Erie	Centre Wellington Hydro Ltd.	Chapleau Public Utilities Corporation	Chatham-Kent Hydro Inc.
<u>Financial Ratios</u>						
Liquidity Ratios						
Current Ratio (Current Assets/Current Liabilities)	1.46	2.62	1.37	4.01	3.72	1.64
Leverage Ratios						
Debt Ratio (Long Term Debt/Total Assets)	13%	31%	62%	38%	57%	35%
Debt to Equity Ratio (Long Term Debt/Total Equity)	0.28	0.65	3.46	0.88	2.95	0.85
Interest Coverage (EBIT/Interst Charges)	2.46	4.07	1.62	1.76	2.91	2.97
Profitability Ratios						
Financial Statement Return on Assets (Net Income/Total Assets)	1.27%	3.13%	1.47%	1.05%	1.40%	3.63%
Financial Statement Return on Equity (Net Income/Total Equity)	2.82%	6.53%	8.24%	2.47%	7.27%	8.87%



Individual Electricity Distributors For the year ended December 31, 2008 (Alphabetically Listed)	Clinton Power Corporation	Cooperative Hydro Embrun Inc.	E.L.K. Energy Inc.	ENWIN Utilities Ltd.	Eastern Ontario Power Inc.	Enersource Hydro Mississauga Inc.
Financial Ratios						
Liquidity Ratios						
Current Ratio (Current Assets/Current Liabilities)	-	3.44	3.75	0.89	0.20	1.80
Leverage Ratios						
Debt Ratio (Long Term Debt/Total Assets)	-	69%	17%	23%	18%	48%
Debt to Equity Ratio (Long Term Debt/Total Equity)	-	5.21	0.26	0.58	0.64	1.47
Interest Coverage (EBIT/Interst Charges)	-	84.09	8.14	3.83	0.44	2.61
Profitability Ratios						
Financial Statement Return on Assets (Net Income/Total Assets)	-	1.97%	5.27%	3.44%	-1.07%	2.96%
Financial Statement Return on Equity (Net Income/Total Equity)	-	14.84%	8.31%	8.84%	-3.90%	9.12%



Individual Electricity Distributors For the year ended December 31, 2008 (Alphabetically Listed)	Erie Thames Powerlines Corporation	Espanola Regional Hydro Distribution Corporation	Essex Powerlines Corporation	Festival Hydro Inc.	Fort Frances Power Corporation	Grand Valley Energy Inc.
<u>Financial Ratios</u>						
Liquidity Ratios						
Current Ratio (Current Assets/Current Liabilities)	0.76	1.52	1.00	0.57	3.96	1.57
Leverage Ratios						
Debt Ratio (Long Term Debt/Total Assets)	34%	74%	21%	0%	0%	0%
Debt to Equity Ratio (Long Term Debt/Total Equity)	0.99	-	0.53	0.00	0.00	0.00
Interest Coverage (EBIT/Interst Charges)	2.61	0.77	3.88	3.30	-0.84	2.55
Profitability Ratios						
Financial Statement Return on Assets (Net Income/Total Assets)	2.22%	-1.45%	2.30%	4.15%	-0.24%	0.22%
Financial Statement Return on Equity (Net Income/Total Equity)	6.49%	-	5.89%	8.69%	-0.29%	0.36%



Individual Electricity Distributors For the year ended December 31, 2008 (Alphabetically Listed)	Great Lakes Power Ltd.	Greater Sudbury Hydro Inc.	Grimsby Power Incorporated	Guelph Hydro Electric Systems Inc.	Haldimand County Hydro Inc.	Halton Hills Hydro Inc.
<u>Financial Ratios</u>						
Liquidity Ratios						
Current Ratio (Current Assets/Current Liabilities)	0.29	0.51	1.78	0.89	1.38	1.48
Leverage Ratios						
Debt Ratio (Long Term Debt/Total Assets)	0%	0%	38%	25%	18%	34%
Debt to Equity Ratio (Long Term Debt/Total Equity)	0.00	0.00	0.83	0.59	0.28	0.76
Interest Coverage (EBIT/Interst Charges)	4.36	1.72	2.34	3.31	5.27	2.46
Profitability Ratios						
Financial Statement Return on Assets (Net Income/Total Assets)	3.37%	0.56%	2.95%	4.06%	4.46%	1.44%
Financial Statement Return on Equity (Net Income/Total Equity)	14.04%	3.38%	6.43%	9.42%	7.03%	3.19%



Individual Electricity Distributors For the year ended December 31, 2008 (Alphabetically Listed)	Hearst Power Distribution Company Limited	Horizon Utilities Corporation	Hydro 2000 Inc.	Hydro Hawkesbury Inc.	Hydro One Brampton Networks Inc.	Hydro One Networks Inc.
<u>Financial Ratios</u>						
Liquidity Ratios						
Current Ratio (Current Assets/Current Liabilities)	3.84	0.46	1.43	3.05	0.95	0.86
Leverage Ratios						
Debt Ratio (Long Term Debt/Total Assets)	28%	0%	16%	18%	41%	42%
Debt to Equity Ratio (Long Term Debt/Total Equity)	0.63	0.00	0.41	0.45	0.98	1.33
Interest Coverage (EBIT/Interst Charges)	0.42	3.40	0.88	1.86	2.86	2.61
Profitability Ratios						
Financial Statement Return on Assets (Net Income/Total Assets)	-0.73%	3.71%	0.64%	1.01%	3.14%	2.26%
Financial Statement Return on Equity (Net Income/Total Equity)	-1.64%	8.59%	1.69%	2.50%	7.50%	7.08%



Individual Electricity Distributors For the year ended December 31, 2008 (Alphabetically Listed)	Hydro Ottawa Limited	Innisfil Hydro Distribution Systems Limited	Kenora Hydro Electric Corporation Ltd.	Kingston Hydro Corporation	Kitchener-Wilmot Hydro Inc.	Lakefront Utilities Inc.
<u>Financial Ratios</u>						
Liquidity Ratios						
Current Ratio (Current Assets/Current Liabilities)	1.10	1.97	2.64	1.47	2.96	1.88
Leverage Ratios						
Debt Ratio (Long Term Debt/Total Assets)	44%	27%	26%	25%	35%	38%
Debt to Equity Ratio (Long Term Debt/Total Equity)	1.26	0.48	0.43	0.62	0.72	0.95
Interest Coverage (EBIT/Interst Charges)	3.39	2.93	1.48	3.50	2.67	4.09
Profitability Ratios						
Financial Statement Return on Assets (Net Income/Total Assets)	3.40%	3.24%	0.41%	2.62%	2.37%	5.66%
Financial Statement Return on Equity (Net Income/Total Equity)	9.73%	5.79%	0.67%	6.47%	4.83%	14.28%



Individual Electricity Distributors For the year ended December 31, 2008 (Alphabetically Listed)	Lakeland Power Distribution Ltd.	London Hydro Inc.	Middlesex Power Distribution Corporation	Midland Power Utility Corporation	Milton Hydro Distribution Inc.	Newbury Power Inc.
Financial Ratios						
Liquidity Ratios						
Current Ratio (Current Assets/Current Liabilities)	1.35	1.88	1.52	1.21	1.75	-
Leverage Ratios						
Debt Ratio (Long Term Debt/Total Assets)	21%	27%	32%	9%	28%	-
Debt to Equity Ratio (Long Term Debt/Total Equity)	0.35	0.51	0.90	0.14	0.54	-
Interest Coverage (EBIT/Interst Charges)	4.06	3.27	3.86	11.21	3.48	-
Profitability Ratios						
Financial Statement Return on Assets (Net Income/Total Assets)	2.31%	2.64%	6.13%	2.45%	3.68%	-
Financial Statement Return on Equity (Net Income/Total Equity)	3.93%	5.01%	17.13%	3.81%	7.12%	-



Individual Electricity Distributors For the year ended December 31, 2008 (Alphabetically Listed)	Newmarket - Tay Power Distribution Ltd.	Niagara Peninsula Energy Inc.	Niagara-on-the- Lake Hydro Inc.	Norfolk Power Distribution Inc.	North Bay Hydro Distribution Limited	Northern Ontario Wires Inc.
<u>Financial Ratios</u>						
Liquidity Ratios						
Current Ratio (Current Assets/Current Liabilities)	2.06	1.15	0.73	1.09	3.18	2.29
Leverage Ratios						
Debt Ratio (Long Term Debt/Total Assets)	32%	21%	26%	31%	33%	29%
Debt to Equity Ratio (Long Term Debt/Total Equity)	0.73	0.40	0.67	0.66	0.76	0.64
Interest Coverage (EBIT/Interst Charges)	3.99	2.50	2.45	1.97	2.86	1.70
Profitability Ratios						
Financial Statement Return on Assets (Net Income/Total Assets)	3.55%	1.82%	2.86%	1.02%	2.43%	1.27%
Financial Statement Return on Equity (Net Income/Total Equity)	8.03%	3.44%	7.29%	2.15%	5.50%	2.81%



Individual Electricity Distributors For the year ended December 31, 2008 (Alphabetically Listed)	Oakville Hydro Electricity Distribution Inc.	Orangeville Hydro Limited	Orillia Power Distribution Corporation	Oshawa PUC Networks Inc.	Ottawa River Power Corporation	PUC Distribution Inc.
<u>Financial Ratios</u>						
Liquidity Ratios						
Current Ratio (Current Assets/Current Liabilities)	1.44	1.88	1.67	2.71	3.27	1.86
Leverage Ratios						
Debt Ratio (Long Term Debt/Total Assets)	41%	33%	43%	34%	31%	47%
Debt to Equity Ratio (Long Term Debt/Total Equity)	1.09	0.73	1.31	0.96	0.72	1.40
Interest Coverage (EBIT/Interst Charges)	2.44	3.57	2.71	4.23	2.03	1.64
Profitability Ratios						
Financial Statement Return on Assets (Net Income/Total Assets)	3.10%	3.49%	2.65%	4.45%	1.81%	1.36%
Financial Statement Return on Equity (Net Income/Total Equity)	8.15%	7.81%	8.10%	12.60%	4.19%	4.09%



Individual Electricity Distributors For the year ended December 31, 2008 (Alphabetically Listed)	Parry Sound Power Corporation	Peterborough Distribution Incorporated	Port Colborne Hydro Inc.	PowerStream Inc.	Renfrew Hydro Inc.	Rideau St. Lawrence Distribution Inc.
Financial Ratios						
Liquidity Ratios						
Current Ratio (Current Assets/Current Liabilities)	1.65	1.77	0.21	1.69	1.05	0.86
Leverage Ratios						
Debt Ratio (Long Term Debt/Total Assets)	32%	43%	0%	47%	1%	3%
Debt to Equity Ratio (Long Term Debt/Total Equity)	0.93	1.06	-	1.42	0.01	0.06
Interest Coverage (EBIT/Interst Charges)	2.12	2.53	1.63	2.41	1.60	3.89
Profitability Ratios						
Financial Statement Return on Assets (Net Income/Total Assets)	2.25%	1.98%	0.51%	2.69%	1.36%	2.96%
Financial Statement Return on Equity (Net Income/Total Equity)	6.52%	4.91%	-	8.15%	3.05%	6.37%



Individual Electricity Distributors For the year ended December 31, 2008 (Alphabetically Listed)	Sioux Lookout Hydro Inc.	St. Thomas Energy Inc.	Thunder Bay Hydro Electricity Distribution Inc.	Tillsonburg Hydro Inc.	Toronto Hydro- Electric System Limited	Veridian Connections Inc.
<u>Financial Ratios</u>						
Liquidity Ratios						
Current Ratio (Current Assets/Current Liabilities)	1.14	1.34	2.72	2.45	0.59	0.64
Leverage Ratios						
Debt Ratio (Long Term Debt/Total Assets)	29%	30%	37%	0%	18%	12%
Debt to Equity Ratio (Long Term Debt/Total Equity)	0.81	0.64	0.84	0.00	0.54	0.34
Interest Coverage (EBIT/Interst Charges)	1.89	3.73	8.87	13.48	2.37	3.03
Profitability Ratios						
Financial Statement Return on Assets (Net Income/Total Assets)	1.19%	3.80%	0.64%	3.82%	3.16%	3.39%
Financial Statement Return on Equity (Net Income/Total Equity)	3.31%	7.93%	1.43%	4.82%	9.79%	9.39%



Individual Electricity Distributors For the year ended December 31, 2008 (Alphabetically Listed)	Wasaga Distribution Inc.	Waterloo North Hydro Inc.	Welland Hydro- Electric System Corp.	Wellington North Power Inc.	West Coast Huron Energy Inc.	West Perth Power Inc.
<u>Financial Ratios</u>						
Liquidity Ratios						
Current Ratio (Current Assets/Current Liabilities)	1.73	1.84	2.76	0.76	6.71	2.49
Leverage Ratios						
Debt Ratio (Long Term Debt/Total Assets)	37%	32%	37%	24%	17%	29%
Debt to Equity Ratio (Long Term Debt/Total Equity)	0.44	0.69	0.87	0.67	0.25	0.65
Interest Coverage (EBIT/Interest Charges)	5.05	3.12	1.70	0.95	3.91	0.36
Profitability Ratios						
Financial Statement Return on Assets (Net Income/Total Assets)	5.99%	4.28%	1.29%	-0.13%	3.64%	-1.58%
Financial Statement Return on Equity (Net Income/Total Equity)	7.18%	9.31%	3.01%	-0.36%	5.34%	-3.52%



Individual Electricity Distributors For the year ended December 31, 2008 (Alphabetically Listed)	Westario Power Inc.	Whitby Hydro Electric Corporation	Woodstock Hydro Services Inc.
Financial Ratios			
Liquidity Ratios			
Current Ratio (Current Assets/Current Liabilities)	0.86	2.10	2.18
Leverage Ratios			
Debt Ratio (Long Term Debt/Total Assets)	12%	36%	36%
Debt to Equity Ratio (Long Term Debt/Total Equity)	0.23	0.73	0.75
Interest Coverage (EBIT/Interest Charges)	1.10	2.97	2.73
Profitability Ratios			
Financial Statement Return on Assets (Net Income/Total Assets)	0.13%	1.66%	2.95%
Financial Statement Return on Equity (Net Income/Total Equity)	0.26%	3.39%	6.14%



Individual Electricity Distributors For the year ended December 31, 2008 (Alphabetically Listed)	Atikokan Hydro Inc.	Barrie Hydro Distribution Inc.	Bluewater Power Distribution Corporation	Brant County Power Inc.	Brantford Power Inc.	Burlington Hydro Inc.
GENERAL STATISTICS						
Population Served	3,000	182,142	84,379	25,000	92,317	170,100
Municipal Population	3,000	197,980	86,689	30,000	92,317	170,100
Seasonal Population	0	0	0	0	0	0
Total Customers	1,676	69,628	36,218	9,456	37,473	62,737
Residential Customers	1,416	62,513	31,626	8,066	33,869	56,839
General Service <50kW Customers	238	6,375	4,172	1,288	3,196	4,863
General Service >50kW Customers	22	740	416	102	408	1,035
Large User (>5000kW) Customers	0	0	4	0	0	0
Total Service Area (sq km)	380	164	201	257	74	188
Rural Service Area (sq km)	0	0	147	240	0	90
Urban Service Area (sq km)	380	164	54	17	74	98
Total km of Line	92	1,482	747	320	486	1,643
Overhead km of line	92	667	574	282	265	1,002
Underground km of line	0	815	173	38	221	641
Total kWh sold (excluding losses)	26,563,029	1,528,931,462	1,092,208,914	282,717,136	981,223,888	1,650,537,868
Total Distribution Losses (kWh)	445,154	97,740,599	27,353,877	14,775,714	29,726,152	64,175,015
Total kWh Purchased	27,008,183	1,626,672,061	1,119,562,791	297,492,850	1,010,950,040	1,714,712,883
Winter Peak (kW)	4,948	319,735	162,830	44,355	157,904	269,003
Summer Peak (kW)	4,092	318,595	191,640	46,817	182,439	346,409
Average Peak (kW)	4,139	277,972	128,115	42,630	156,316	276,451
Capital Additions in 2008	\$ 328,425	\$ 15,218,526	\$ 4,973,246	\$ 1,351,300	\$ 5,934,691	\$ 11,059,872



Individual Electricity Distributors For the year ended December 31, 2008 (Alphabetically Listed)	COLLUS Power Corp.	Cambridge and North Dumfries Hydro Inc.	Canadian Niagara Power Inc.- Fort Erie	Centre Wellington Hydro Ltd.	Chapleau Public Utilities Corporation	Chatham-Kent Hydro Inc.
GENERAL STATISTICS						
Population Served	25,000	133,480	27,698	20,078	2,428	94,769
Municipal Population	25,000	133,480	27,698	27,290	2,428	107,615
Seasonal Population	-	0	-	0	3	-
Total Customers	14,387	49,297	15,616	6,309	1,335	32,094
Residential Customers	12,700	43,918	14,182	5,562	1,148	28,504
General Service <50kW Customers	1,566	4,668	1,290	687	173	3,155
General Service >50kW Customers	120	708	144	60	14	433
Large User (>5000kW) Customers	1	3	0	0	0	2
Total Service Area (sq km)	57	303	168	10	2	70
Rural Service Area (sq km)	-	213	133	0	-	-
Urban Service Area (sq km)	57	90	35	10	2	70
Total km of Line	327	1,112	524	146	27	795
Overhead km of line	214	730	482	77	26	569
Underground km of line	113	382	42	69	1	226
Total kWh sold (excluding losses)	322,535,808	1,519,170,825	287,833,000	154,672,345	28,582,032	818,165,740
Total Distribution Losses (kWh)	10,710,893	39,970,407	16,856,868	7,044,500	1,675,375	34,652,340
Total kWh Purchased	333,246,701	1,559,141,232	304,689,868	161,716,845	30,257,407	852,818,080
Winter Peak (kW)	57,168	244,764	48,155	27,584	6,703	128,591
Summer Peak (kW)	48,384	291,292	56,171	26,681	5,618	165,946
Average Peak (kW)	49,474	246,659	47,039	25,348	4,629	133,477
Capital Additions in 2008	\$ 2,704,891	\$ 8,395,573	\$ 5,019,498	\$ 387,901	\$ 42,374	\$ 5,347,119



Individual Electricity Distributors For the year ended December 31, 2008 (Alphabetically Listed)	Clinton Power Corporation	Cooperative Hydro Embrun Inc.	E.L.K. Energy Inc.	ENWIN Utilities Ltd.	Eastern Ontario Power Inc.	Enersource Hydro Mississauga Inc.
GENERAL STATISTICS						
Population Served	-	4,000	21,873	215,718	6,700	710,000
Municipal Population	-	12,500	74,185	216,473	5,000	710,000
Seasonal Population	-	0	0	0	200	-
Total Customers	-	1,936	10,853	84,644	3,543	186,929
Residential Customers	-	1,743	9,638	76,400	3,100	165,882
General Service <50kW Customers	-	181	1,099	7,040	408	16,693
General Service >50kW Customers	-	12	116	1,194	35	4,344
Large User (>5000kW) Customers	-	0	0	10	0	10
Total Service Area (sq km)	-	5	22	120	66	287
Rural Service Area (sq km)	-	0	0	0	48	-
Urban Service Area (sq km)	-	5	22	120	18	287
Total km of Line	-	27	147	1,133	177	5,246
Overhead km of line	-	15	89	723	168	1,816
Underground km of line	-	12	58	410	9	3,430
Total kWh sold (excluding losses)	-	29,483,564	251,163,118	2,735,456,387	62,983,630	7,821,062,568
Total Distribution Losses (kWh)	-	510,177	11,477,482	76,983,744	6,410,702	275,489,194
Total kWh Purchased	-	29,993,741	262,640,600	2,812,440,131	69,394,332	8,096,551,762
Winter Peak (kW)	-	6,974	44,280	419,000	12,953	1,196,300
Summer Peak (kW)	-	5,793	58,453	532,600	10,571	1,507,900
Average Peak (kW)	-	5,627	44,779	430,375	11,355	1,238,858
Capital Additions in 2008	\$ -	\$ 128,978	\$ 1,199,448	\$ 10,038,321	\$ 1,097,305	\$ 49,396,513



Individual Electricity Distributors For the year ended December 31, 2008 (Alphabetically Listed)	Erie Thames Powerlines Corporation	Espanola Regional Hydro Distribution Corporation	Essex Powerlines Corporation	Festival Hydro Inc.	Fort Frances Power Corporation	Grand Valley Energy Inc.
GENERAL STATISTICS						
Population Served	32,042	7,138	72,505	43,541	8,315	1,600
Municipal Population	35,246	8,700	103,579	43,541	8,315	2,529
Seasonal Population	235	65	0	0	0	0
Total Customers	14,312	3,349	27,929	19,394	4,001	681
Residential Customers	12,747	2,848	25,711	17,178	3,520	594
General Service <50kW Customers	1,406	485	1,993	1,988	435	80
General Service >50kW Customers	157	16	225	226	46	7
Large User (>5000kW) Customers	2	0	0	2	0	0
Total Service Area (sq km)	1,877	99	104	44	26	1
Rural Service Area (sq km)	1,830	73	38	0	0	0
Urban Service Area (sq km)	47	26	66	44	26	1
Total km of Line	265	137	467	274	84	9
Overhead km of line	210	126	227	184	76	8
Underground km of line	55	11	240	90	8	1
Total kWh sold (excluding losses)	397,240,748	63,594,843	546,871,556	593,387,454	84,002,098	9,082,809
Total Distribution Losses (kWh)	12,674,180	2,163,871	26,177,714	18,279,745	3,540,990	453,388
Total kWh Purchased	409,914,928	65,758,714	573,049,270	611,667,199	87,543,088	9,536,197
Winter Peak (kW)	77,244	14,006	89,667	97,999	18,421	2,125
Summer Peak (kW)	69,007	9,562	137,328	105,205	12,843	1,300
Average Peak (kW)	65,935	10,468	96,325	94,572	14,135	1,564
Capital Additions in 2008	\$ 2,165,216	\$ 232,703	\$ 6,069,658	\$ 5,469,757	\$ 160,373	\$ 76,189



Individual Electricity Distributors For the year ended December 31, 2008 (Alphabetically Listed)	Great Lakes Power Ltd.	Greater Sudbury Hydro Inc.	Grimsby Power Incorporated	Guelph Hydro Electric Systems Inc.	Haldimand County Hydro Inc.	Halton Hills Hydro Inc.
GENERAL STATISTICS						
Population Served	16,789	109,529	21,500	132,915	45,212	55,289
Municipal Population	10,552	170,219	21,500	132,915	45,212	55,289
Seasonal Population	3,688	142	-	0	0	0
Total Customers	11,587	46,215	9,937	48,914	20,815	20,818
Residential Customers	10,601	41,634	9,092	44,640	18,245	18,881
General Service <50kW Customers	939	4,097	739	3,712	2,433	1,741
General Service >50kW Customers	46	484	106	558	137	196
Large User (>5000kW) Customers	1	0	0	4	0	0
Total Service Area (sq km)	14,200	410	67	93	1,252	281
Rural Service Area (sq km)	14,197	120	45	0	1,216	255
Urban Service Area (sq km)	3	290	22	93	36	26
Total km of Line	1,845	871	238	1,049	1,716	1,363
Overhead km of line	1,841	696	178	429	1,633	882
Underground km of line	4	175	60	620	83	481
Total kWh sold (excluding losses)	179,203,328	966,826,979	172,845,115	1,584,099,982	413,377,436	500,675,922
Total Distribution Losses (kWh)	18,941,752	50,442,693	8,731,502	9,989,356	24,382,866	7,111,518
Total kWh Purchased	198,145,080	1,017,269,672	181,576,618	1,594,089,338	437,760,302	507,787,440
Winter Peak (kW)	39,583	189,105	32,246	248,660	77,749	83,557
Summer Peak (kW)	24,929	148,081	39,817	273,898	88,198	99,539
Average Peak (kW)	29,762	189,105	31,336	243,931	74,016	82,095
Capital Additions in 2008	\$ 11,609,629	\$ 8,094,590	\$ 959,420	\$ 13,599,866	\$ 4,937,016	\$ 3,306,411



Individual Electricity Distributors For the year ended December 31, 2008 (Alphabetically Listed)	Hearst Power Distribution Company Limited	Horizon Utilities Corporation	Hydro 2000 Inc.	Hydro Hawkesbury Inc.	Hydro One Brampton Networks Inc.	Hydro One Networks Inc.
GENERAL STATISTICS						
Population Served	5,635	571,552	2,600	10,500	487,230	2,891,523
Municipal Population	5,635	636,548	9,500	10,500	487,230	2,891,523
Seasonal Population	-	0	0	0	-	155,898
Total Customers	2,763	233,947	1,177	5,375	129,585	1,187,253
Residential Customers	2,327	211,826	1,019	4,724	120,395	1,077,500
General Service <50kW Customers	390	19,906	146	571	7,552	109,722
General Service >50kW Customers	46	2,203	12	79	1,632	0
Large User (>5000kW) Customers	0	12	0	1	6	31
Total Service Area (sq km)	93	426	9	8	269	650,000
Rural Service Area (sq km)	-	88	0	0	-	650,000
Urban Service Area (sq km)	93	338	9	8	269	0
Total km of Line	68	3,294	21	65	2,744	120,516
Overhead km of line	57	1,519	18	56	806	116,265
Underground km of line	11	1,775	3	9	1,938	4,251
Total kWh sold (excluding losses)	84,590,449	5,999,400,877	26,306,508	185,032,775	3,791,763,566	24,181,000,000
Total Distribution Losses (kWh)	4,255,669	157,731,970	241,042	9,370,102	121,336,434	1,763,000,000
Total kWh Purchased	88,846,118	6,157,132,847	26,547,550	194,402,877	3,913,100,000	25,944,000,000
Winter Peak (kW)	17,862	927,256	6,156	35,335	596,600	3,867,055
Summer Peak (kW)	14,301	1,112,056	4,283	31,074	729,200	3,077,912
Average Peak (kW)	14,719	916,790	4,332	30,858	610,500	3,113,787
Capital Additions in 2008	\$ 114,484	\$ 41,743,793	\$ 199,904	\$ 172,758	\$ 25,551,586	\$ 541,500,000



Individual Electricity Distributors For the year ended December 31, 2008 (Alphabetically Listed)	Hydro Ottawa Limited	Innisfil Hydro Distribution Systems Limited	Kenora Hydro Electric Corporation Ltd.	Kingston Hydro Corporation	Kitchener-Wilmut Hydro Inc.	Lakefront Utilities Inc.
GENERAL STATISTICS						
Population Served	808,335	31,175	12,000	58,000	240,055	22,000
Municipal Population	898,150	31,175	16,500	119,000	240,055	22,000
Seasonal Population	-	677	-	0	0	0
Total Customers	291,639	14,471	5,583	26,940	84,195	9,215
Residential Customers	264,958	13,472	4,790	23,142	75,847	7,942
General Service <50kW Customers	23,314	925	724	3,429	7,337	1,138
General Service >50kW Customers	3,356	74	69	366	1,007	135
Large User (>5000kW) Customers	11	0	0	3	4	0
Total Service Area (sq km)	1,104	292	24	32	404	27
Rural Service Area (sq km)	650	229	-	0	280	0
Urban Service Area (sq km)	454	63	24	32	124	27
Total km of Line	5,353	647	98	386	1,872	114
Overhead km of line	2,730	525	88	252	1,044	95
Underground km of line	2,623	122	10	134	828	19
Total kWh sold (excluding losses)	7,561,763,317	226,442,150	110,421,190	712,456,136	1,877,476,985	282,245,918
Total Distribution Losses (kWh)	305,651,037	14,523,313	4,344,447	32,489,374	61,587,419	2,763,679
Total kWh Purchased	7,867,414,354	240,965,463	114,765,637	744,945,510	1,939,064,404	285,009,597
Winter Peak (kW)	1,267,613	49,100	22,435	126,174	312,977	46,944
Summer Peak (kW)	1,355,421	41,063	20,081	110,106	350,930	45,235
Average Peak (kW)	1,169,649	41,276	18,274	110,027	304,510	42,577
Capital Additions in 2008	\$ 68,160,413	\$ 2,398,380	\$ 649,292	\$ 3,757,161	\$ 17,929,962	\$ 1,469,907



Individual Electricity Distributors For the year ended December 31, 2008 (Alphabetically Listed)	Lakeland Power Distribution Ltd.	London Hydro Inc.	Middlesex Power Distribution Corporation	Midland Power Utility Corporation	Milton Hydro Distribution Inc.	Newbury Power Inc.
GENERAL STATISTICS						
Population Served	22,322	355,000	6,763	16,000	71,700	-
Municipal Population	36,166	355,000	18,231	17,000	71,700	-
Seasonal Population	147	-	-	0	0	-
Total Customers	9,295	143,797	7,026	6,773	25,373	-
Residential Customers	7,605	130,245	6,246	5,935	22,755	-
General Service <50kW Customers	1,590	11,940	687	727	2,312	-
General Service >50kW Customers	100	1,609	92	111	304	-
Large User (>5000kW) Customers	0	3	1	0	2	-
Total Service Area (sq km)	144	421	21	20	370	-
Rural Service Area (sq km)	128	258	5	0	313	-
Urban Service Area (sq km)	16	163	16	20	57	-
Total km of Line	355	2,781	106	115	866	-
Overhead km of line	284	1,369	81	79	546	-
Underground km of line	71	1,412	25	36	320	-
Total kWh sold (excluding losses)	219,438,642	3,333,873,405	191,155,222	215,492,783	689,929,267	-
Total Distribution Losses (kWh)	10,371,051	108,741,071	9,691,160	7,059,102	22,410,604	-
Total kWh Purchased	229,809,693	3,442,614,476	200,846,382	222,551,885	712,339,871	-
Winter Peak (kW)	49,384	536,384	31,936	36,876	110,590	-
Summer Peak (kW)	34,161	659,564	36,871	38,488	125,846	-
Average Peak (kW)	36,543	541,266	31,895	35,244	108,981	-
Capital Additions in 2008	\$ 1,478,461	\$ 28,239,054	\$ 1,116,382	\$ 2,008,954	\$ 6,513,566	\$ -



Individual Electricity Distributors For the year ended December 31, 2008 (Alphabetically Listed)	Newmarket - Tay Power Distribution Ltd.	Niagara Peninsula Energy Inc.	Niagara-on-the- Lake Hydro Inc.	Norfolk Power Distribution Inc.	North Bay Hydro Distribution Limited	Northern Ontario Wires Inc.
GENERAL STATISTICS						
Population Served	89,266	132,395	14,800	31,500	55,000	14,000
Municipal Population	135,027	133,228	14,800	63,000	55,000	18,777
Seasonal Population	525	0	250	200	0	0
Total Customers	31,874	50,255	7,798	18,806	23,669	6,055
Residential Customers	28,484	45,053	6,436	16,547	20,757	5,214
General Service <50kW Customers	2,996	4,355	1,247	2,097	2,637	770
General Service >50kW Customers	394	847	115	162	275	71
Large User (>5000kW) Customers	0	0	0	0	0	0
Total Service Area (sq km)	74	827	133	693	330	28
Rural Service Area (sq km)	3	759	119	549	279	0
Urban Service Area (sq km)	71	68	14	144	51	28
Total km of Line	1,050	1,820	337	691	612	370
Overhead km of line	583	1,387	247	607	516	365
Underground km of line	467	433	90	84	96	5
Total kWh sold (excluding losses)	735,465,676	1,223,657,037	174,363,672	374,499,692	567,021,540	122,730,091
Total Distribution Losses (kWh)	18,792,550	38,493,543	8,449,563	22,274,476	27,882,451	8,294,658
Total kWh Purchased	754,258,226	1,262,150,580	182,813,235	396,774,168	594,903,991	131,024,749
Winter Peak (kW)	124,190	194,310	29,013	67,627	108,731	24,006
Summer Peak (kW)	141,148	249,175	40,775	75,381	81,287	19,447
Average Peak (kW)	122,276	198,648	30,128	65,146	89,804	20,248
Capital Additions in 2008	\$ 7,050,993	\$ 15,400,649	\$ 1,681,903	\$ 4,276,639	\$ 5,078,898	\$ 591,028



Individual Electricity Distributors For the year ended December 31, 2008 (Alphabetically Listed)	Oakville Hydro Electricity Distribution Inc.	Orangeville Hydro Limited	Orillia Power Distribution Corporation	Oshawa PUC Networks Inc.	Ottawa River Power Corporation	PUC Distribution Inc.
GENERAL STATISTICS						
Population Served	173,600	27,300	31,000	150,000	20,200	77,948
Municipal Population	173,600	27,300	31,000	150,000	20,200	74,948
Seasonal Population	-	0	-	0	0	100
Total Customers	62,038	10,200	12,797	51,813	10,381	32,734
Residential Customers	55,658	9,056	11,261	47,436	8,809	28,915
General Service <50kW Customers	5,533	1,019	1,386	3,822	1,429	3,381
General Service >50kW Customers	846	125	150	552	143	438
Large User (>5000kW) Customers	1	0	0	3	0	0
Total Service Area (sq km)	143	16	27	143	35	342
Rural Service Area (sq km)	41	-	-	72	-	284
Urban Service Area (sq km)	102	16	27	71	35	58
Total km of Line	1,414	161	304	948	146	728
Overhead km of line	547	95	245	510	127	612
Underground km of line	867	66	59	438	19	116
Total kWh sold (excluding losses)	1,572,154,627	240,633,231	319,007,970	1,116,913,296	196,409,498	710,698,626
Total Distribution Losses (kWh)	61,830,852	7,780,917	11,147,475	35,035,790	6,320,986	30,267,862
Total kWh Purchased	1,633,985,479	248,414,148	330,155,445	1,151,949,086	202,730,484	740,966,488
Winter Peak (kW)	347,832	41,257	55,775	208,345	37,482	139,124
Summer Peak (kW)	346,908	42,789	50,520	192,721	29,118	92,154
Average Peak (kW)	276,001	39,097	49,220	184,389	28,131	109,253
Capital Additions in 2008	\$ 19,368,314	\$ 1,492,908	\$ 2,251,561	\$ 9,942,000	\$ 804,555	\$ 4,939,789



Individual Electricity Distributors For the year ended December 31, 2008 (Alphabetically Listed)	Parry Sound Power Corporation	Peterborough Distribution Incorporated	Port Colborne Hydro Inc.	PowerStream Inc.	Renfrew Hydro Inc.	Rideau St. Lawrence Distribution Inc.
GENERAL STATISTICS						
Population Served	19,170	80,253	18,003	805,479	7,846	9,900
Municipal Population	6,500	80,253	18,003	805,479	7,846	16,700
Seasonal Population	-	0	-	0	0	0
Total Customers	3,356	34,349	9,229	244,573	4,194	5,859
Residential Customers	2,723	30,342	8,151	215,323	3,603	4,966
General Service <50kW Customers	565	3,642	1,001	25,340	523	827
General Service >50kW Customers	68	363	77	3,909	68	66
Large User (>5000kW) Customers	0	2	0	1	0	0
Total Service Area (sq km)	15	64	122	640	13	18
Rural Service Area (sq km)	-	-	102	184	-	7
Urban Service Area (sq km)	15	64	20	456	13	11
Total km of Line	128	550	311	6,109	55	88
Overhead km of line	117	384	296	1,925	53	79
Underground km of line	11	166	15	4,184	2	9
Total kWh sold (excluding losses)	88,199,452	819,538,763	192,894,440	6,828,654,920	101,925,474	111,785,106
Total Distribution Losses (kWh)	5,017,358	32,502,682	13,325,051	162,955,001	4,628,449	9,549,534
Total kWh Purchased	93,216,810	852,041,445	206,219,491	6,991,609,921	106,553,923	121,334,640
Winter Peak (kW)	18,670	148,395	34,923	1,084,085	19,183	39,622
Summer Peak (kW)	11,820	142,964	40,485	1,443,918	17,745	21,598
Average Peak (kW)	13,970	132,690	34,804	1,141,832	16,731	21,600
Capital Additions in 2008	\$ 667,282	\$ 4,409,757	\$ 1,803,889	\$ 74,602,623	\$ 368,204	\$ 576,549



Individual Electricity Distributors For the year ended December 31, 2008 (Alphabetically Listed)	Sioux Lookout Hydro Inc.	St. Thomas Energy Inc.	Thunder Bay Hydro Electricity Distribution Inc.	Tillsonburg Hydro Inc.	Toronto Hydro- Electric System Limited	Veridian Connections Inc.
GENERAL STATISTICS						
Population Served	5,336	36,000	110,046	15,140	2,503,281	304,909
Municipal Population	5,336	36,000	109,141	15,000	2,503,281	407,990
Seasonal Population	108	0	-	0	0	1,603
Total Customers	2,734	16,133	49,361	6,622	684,145	110,861
Residential Customers	2,302	14,260	44,351	5,877	605,509	100,534
General Service <50kW Customers	392	1,684	4,482	654	65,917	9,242
General Service >50kW Customers	40	188	528	90	12,672	1,080
Large User (>5000kW) Customers	0	1	0	1	47	5
Total Service Area (sq km)	536	33	381	24	630	639
Rural Service Area (sq km)	530	0	259	3	0	386
Urban Service Area (sq km)	6	33	122	21	630	253
Total km of Line	211	244	1,172	156	9,816	2,135
Overhead km of line	205	158	940	102	4,218	1,386
Underground km of line	6	86	232	54	5,598	749
Total kWh sold (excluding losses)	77,324,320	343,399,650	1,006,260,715	208,969,863	25,139,059,222	2,501,313,739
Total Distribution Losses (kWh)	1,985,213	8,698,611	38,748,821	10,297,104	897,828,640	122,527,043
Total kWh Purchased	79,309,533	352,098,261	1,045,009,536	219,266,967	26,036,887,862	2,623,840,782
Winter Peak (kW)	18,091	58,384	186,530	36,361	4,095,298	435,452
Summer Peak (kW)	11,853	67,027	161,660	41,632	4,564,349	444,396
Average Peak (kW)	13,292	56,122	158,988	35,707	3,962,494	405,306
Capital Additions in 2008	\$ 440,124	\$ 2,558,792	\$ 7,822,358	\$ 917,687	\$ 227,916,609	\$ 17,111,921



Individual Electricity Distributors For the year ended December 31, 2008 (Alphabetically Listed)	Wasaga Distribution Inc.	Waterloo North Hydro Inc.	Welland Hydro- Electric System Corp.	Wellington North Power Inc.	West Coast Huron Energy Inc.	West Perth Power Inc.
GENERAL STATISTICS						
Population Served	17,000	146,610	50,331	7,200	7,411	-
Municipal Population	17,000	146,610	50,331	11,500	7,411	-
Seasonal Population	1,200	0	-	0	0	-
Total Customers	11,660	50,478	21,706	3,535	3,878	-
Residential Customers	10,833	44,593	19,601	3,022	3,315	-
General Service <50kW Customers	798	5,219	1,933	462	508	-
General Service >50kW Customers	29	664	169	51	54	-
Large User (>5000kW) Customers	0	2	3	0	1	-
Total Service Area (sq km)	61	672	84	14	8	-
Rural Service Area (sq km)	8	607	-	0	0	-
Urban Service Area (sq km)	53	65	84	14	8	-
Total km of Line	232	1,542	443	75	65	-
Overhead km of line	125	1,059	330	66	52	-
Underground km of line	107	483	113	9	13	-
Total kWh sold (excluding losses)	116,309,548	1,369,710,372	467,724,992	93,707,618	154,353,219	-
Total Distribution Losses (kWh)	7,670,860	51,597,125	19,337,918	6,802,643	4,590,434	-
Total kWh Purchased	123,980,408	1,421,307,497	487,062,910	100,510,261	158,943,652	-
Winter Peak (kW)	25,438	229,318	80,092	16,519	26,000	-
Summer Peak (kW)	24,236	255,540	94,801	15,025	26,000	-
Average Peak (kW)	20,650	223,576	79,945	15,119	24,000	-
Capital Additions in 2008	\$ 1,968,842	\$ 14,448,141	\$ 2,254,765	\$ 1,401,159	\$ 348,736	\$ -



Individual Electricity Distributors For the year ended December 31, 2008 (Alphabetically Listed)	Westario Power Inc.	Whitby Hydro Electric Corporation	Woodstock Hydro Services Inc.
<u>GENERAL STATISTICS</u>			
Population Served	40,000	111,184	3,500
Municipal Population	78,420	111,184	36,000
Seasonal Population	0	0	-
Total Customers	21,592	39,225	14,645
Residential Customers	18,879	36,496	13,240
General Service <50kW Customers	2,462	2,292	1,211
General Service >50kW Customers	251	437	193
Large User (>5000kW) Customers	0	0	1
Total Service Area (sq km)	49	147	29
Rural Service Area (sq km)	-	76	-
Urban Service Area (sq km)	49	71	29
Total km of Line	440	1,030	246
Overhead km of line	309	495	156
Underground km of line	131	535	90
Total kWh sold (excluding losses)	472,219,422	868,996,084	394,323,991
Total Distribution Losses (kWh)	6,483,110	28,677,550	12,943,195
Total kWh Purchased	478,702,532	897,673,634	407,267,186
Winter Peak (kW)	84,988	151,856	65,208
Summer Peak (kW)	65,309	167,732	74,117
Average Peak (kW)	72,343	144,472	64,012
Capital Additions in 2008	\$ 6,674,936	\$ 7,504,184	\$ 3,900,264



Individual Electricity Distributors For the year ended December 31, 2008 (Alphabetically Listed)	Atikokan Hydro Inc.	Barrie Hydro Distribution Inc.	Bluewater Power Distribution Corporation	Brant County Power Inc.	Brantford Power Inc.	Burlington Hydro Inc.
UNITIZED STATISTICS						
# of Customers per sq km of Service Area	4.41	424.56	180.19	36.79	506.39	333.71
# of Customers per km of Line	18.22	46.98	48.48	29.55	77.10	38.18
Average Revenue from Distribution						
Per Customer annually	\$ 623.79	\$ 440.81	\$ 455.70	\$ 659.61	\$ 425.15	\$ 451.26
Per Total kWh Purchased	\$ 0.039	\$ 0.020	\$ 0.015	\$ 0.022	\$ 0.016	\$ 0.017
Average Cost of Power						
Per Customer annually	\$ 1,068	\$ 1,610	\$ 1,904	\$ 1,963	\$ 1,979	\$ 1,909
Per Total kWh Purchased	\$ 0.066	\$ 0.069	\$ 0.062	\$ 0.062	\$ 0.073	\$ 0.070
Avg monthly kWh consumed per customer	1,343	1,947	2,576	2,622	2,248	2,278
Avg Peak (kW) per Customer	2.47	3.99	3.54	4.51	4.17	4.41
OM&A Per Customer	\$ 504.19	\$ 149.17	\$ 251.50	\$ 352.53	\$ 205.32	\$ 206.47
Net Income (Loss) Per Customer	\$ 19.13	\$ 56.29	\$ 52.79	\$ 83.70	\$ 54.10	\$ 53.27
Net Fixed Assets per Customer	\$ 1,158	\$ 1,867	\$ 1,075	\$ 1,984	\$ 1,557	\$ 1,311
SERVICE QUALITY INDICATORS						
% Completed within approved time						
Low Voltage Connections	-	100.00	100.00	100.00	99.70	97.20
High Voltage Connections	-	100.00	100.00	-	100.00	-
Cable Locates	100.00	99.90	99.70	96.80	99.90	99.00
Phone Calls	100.00	73.40	74.50	89.70	79.80	73.40
Annual Appointments	100.00	100.00	100.00	99.90	100.00	99.80
Annual Written Response	100.00	100.00	100.00	100.00	98.00	100.00
Emergency Urban Response	100.00	86.60	100.00	100.00	100.00	89.80
Emergency Rural Response	-	-	100.00	100.00	-	-
Service Reliability Indices						
Saidi-Annual	1.11	2.81	2.37	1.81	0.86	1.36
Saifi-Annual	1.47	3.35	2.32	1.34	1.71	1.70
Caidi-Annual	0.75	0.84	1.02	1.35	0.50	0.80



Individual Electricity Distributors For the year ended December 31, 2008 (Alphabetically Listed)	COLLUS Power Corp.	Cambridge and North Dumfries Hydro Inc.	Canadian Niagara Power Inc.- Fort Erie	Centre Wellington Hydro Ltd.	Chapleau Public Utilities Corporation	Chatham-Kent Hydro Inc.
UNITIZED STATISTICS						
# of Customers per sq km of Service Area	252.40	162.70	92.95	630.90	667.50	458.49
# of Customers per km of Line	44.00	44.33	29.80	43.21	49.44	40.37
Average Revenue from Distribution						
Per Customer annually	\$ 339.56	\$ 457.43	\$ 618.20	\$ 404.92	\$ 481.08	\$ 456.51
Per Total kWh Purchased	\$ 0.015	\$ 0.015	\$ 0.034	\$ 0.017	\$ 0.022	\$ 0.018
Average Cost of Power						
Per Customer annually	\$ 1,653	\$ 2,258	\$ 1,372	\$ 1,900	\$ 1,482	\$ 1,908
Per Total kWh Purchased	\$ 0.071	\$ 0.071	\$ 0.070	\$ 0.074	\$ 0.065	\$ 0.072
Avg monthly kWh consumed per customer	1,930	2,636	1,626	2,136	1,889	2,214
Avg Peak (kW) per Customer	3.44	5.00	3.01	4.02	3.47	4.16
OM&A Per Customer	\$ 249.90	\$ 184.20	\$ 284.92	\$ 248.02	\$ 441.78	\$ 176.96
Net Income (Loss) Per Customer	\$ 19.45	\$ 77.21	\$ 44.16	\$ 22.41	\$ 20.68	\$ 76.13
Net Fixed Assets per Customer	\$ 832	\$ 1,671	\$ 2,394	\$ 1,068	\$ 664	\$ 1,447
SERVICE QUALITY INDICATORS						
% Completed within approved time						
Low Voltage Connections	100.00	95.50	100.00	100.00	100.00	97.00
High Voltage Connections	100.00	-	-	-	-	-
Cable Locates	100.00	100.00	99.50	98.60	100.00	90.40
Phone Calls	97.50	84.90	88.10	100.00	100.00	78.60
Annual Appointments	97.10	100.00	100.00	100.00	100.00	99.60
Annual Written Response	100.00	100.00	100.00	100.00	100.00	100.00
Emergency Urban Response	100.00	97.10	100.00	98.40	-	92.50
Emergency Rural Response	-	94.00	-	-	-	-
Service Reliability Indices						
Saidi-Annual	28.12	0.70	3.38	0.61	3.89	1.60
Saifi-Annual	25.84	1.08	3.18	0.63	1.05	1.48
Caidi-Annual	1.09	0.65	1.06	0.97	3.71	1.08



Individual Electricity Distributors For the year ended December 31, 2008 (Alphabetically Listed)	Clinton Power Corporation	Cooperative Hydro Embrun Inc.	E.L.K. Energy Inc.	ENWIN Utilities Ltd.	Eastern Ontario Power Inc.	Enersource Hydro Mississauga Inc.
UNITIZED STATISTICS						
# of Customers per sq km of Service Area	-	387.20	493.32	705.37	53.68	651.32
# of Customers per km of Line	-	71.70	73.83	74.71	20.02	35.63
Average Revenue from Distribution						
Per Customer annually	- \$	307.61	\$ 448.60	\$ 551.48	\$ 462.06	\$ 599.66
Per Total kWh Purchased	- \$	0.020	\$ 0.019	\$ 0.017	\$ 0.026	\$ 0.014
Average Cost of Power						
Per Customer annually	- \$	1,003	\$ 1,514	\$ 2,123	\$ 1,447	\$ 2,939
Per Total kWh Purchased	- \$	0.065	\$ 0.063	\$ 0.064	\$ 0.074	\$ 0.068
Avg monthly kWh consumed per customer	-	1,291	2,017	2,769	1,632	3,609
Avg Peak (kW) per Customer	-	2.91	4.13	5.08	3.20	6.63
OM&A Per Customer	- \$	209.00	\$ 200.18	\$ 259.19	\$ 334.79	\$ 240.37
Net Income (Loss) Per Customer	- \$	42.14	\$ 113.47	\$ 89.28	\$ (35.80)	\$ 96.48
Net Fixed Assets per Customer	- \$	978	\$ 812	\$ 2,057	\$ 3,050	\$ 2,269
SERVICE QUALITY INDICATORS						
% Completed within approved time						
Low Voltage Connections	100.00	100.00	93.60	99.60	100.00	98.70
High Voltage Connections	-	-	-	100.00	-	100.00
Cable Locates	97.90	100.00	95.00	99.50	96.20	99.90
Phone Calls	86.30	92.60	96.00	77.20	88.70	86.50
Annual Appointments	100.00	100.00	91.20	98.10	100.00	98.30
Annual Written Response	-	100.00	80.70	100.00	100.00	99.50
Emergency Urban Response	-	100.00	88.10	98.50	100.00	97.10
Emergency Rural Response	-	-	-	-	100.00	-
Service Reliability Indices						
Saidi-Annual	1.20	7.14	2.14	1.34	0.85	0.33
Saifi-Annual	1.88	2.17	0.69	2.75	0.55	0.73
Caidi-Annual	0.64	3.28	3.08	0.49	1.55	0.45



Individual Electricity Distributors For the year ended December 31, 2008 (Alphabetically Listed)	Erie Thames Powerlines Corporation	Espanola Regional Hydro Distribution Corporation	Essex Powerlines Corporation	Festival Hydro Inc.	Fort Frances Power Corporation	Grand Valley Energy Inc.
UNITIZED STATISTICS						
# of Customers per sq km of Service Area	7.62	33.83	268.55	440.77	153.88	681.00
# of Customers per km of Line	54.01	24.45	59.81	70.78	47.63	75.67
Average Revenue from Distribution						
Per Customer annually	\$ 492.43	\$ 383.85	\$ 357.87	\$ 492.07	\$ 397.29	\$ 360.82
Per Total kWh Purchased	\$ 0.018	\$ 0.020	\$ 0.018	\$ 0.016	\$ 0.019	\$ 0.027
Average Cost of Power						
Per Customer annually	\$ 1,960	\$ 1,408	\$ 1,564	\$ 2,234	\$ 1,472	\$ 1,014
Per Total kWh Purchased	\$ 0.068	\$ 0.072	\$ 0.076	\$ 0.071	\$ 0.067	\$ 0.072
Avg monthly kWh consumed per customer	2,387	1,636	1,710	2,628	1,823	1,167
Avg Peak (kW) per Customer	4.61	3.13	3.45	4.88	3.53	2.30
OM&A Per Customer	\$ 338.01	\$ 299.76	\$ 196.89	\$ 185.82	\$ 312.64	\$ 312.53
Net Income (Loss) Per Customer	\$ 39.08	\$ (22.35)	\$ 36.84	\$ 90.85	\$ (4.29)	\$ 2.53
Net Fixed Assets per Customer	\$ 1,227	\$ 634	\$ 1,117	\$ 1,645	\$ 745	\$ 508
SERVICE QUALITY INDICATORS						
% Completed within approved time						
Low Voltage Connections	97.50	100.00	98.10	98.00	100.00	100.00
High Voltage Connections	100.00	-	-	-	100.00	-
Cable Locates	91.30	92.00	99.70	99.50	100.00	100.00
Phone Calls	97.10	73.30	79.60	98.30	100.00	100.00
Annual Appointments	100.00	100.00	99.80	99.50	100.00	100.00
Annual Written Response	100.00	95.30	93.40	100.00	100.00	-
Emergency Urban Response	60.00	100.00	100.00	100.00	100.00	-
Emergency Rural Response	-	-	-	-	-	-
Service Reliability Indices						
Saidi-Annual	6.08	0.81	3.54	1.69	3.77	0.69
Saifi-Annual	1.63	0.90	3.42	1.82	1.77	0.41
Caidi-Annual	3.73	0.89	1.04	0.93	2.13	1.66



Individual Electricity Distributors For the year ended December 31, 2008 (Alphabetically Listed)	Great Lakes Power Ltd.	Greater Sudbury Hydro Inc.	Grimsby Power Incorporated	Guelph Hydro Electric Systems Inc.	Haldimand County Hydro Inc.	Halton Hills Hydro Inc.
UNITIZED STATISTICS						
# of Customers per sq km of Service Area	0.82	112.72	148.31	525.96	16.63	74.09
# of Customers per km of Line	6.28	53.06	41.75	46.63	12.13	15.27
Average Revenue from Distribution						
Per Customer annually	\$ 1,599.25	\$ 481.65	\$ 352.36	\$ 496.78	\$ 581.91	\$ 443.77
Per Total kWh Purchased	\$ 0.103	\$ 0.023	\$ 0.020	\$ 0.015	\$ 0.029	\$ 0.018
Average Cost of Power						
Per Customer annually	\$ 1,197	\$ 1,553	\$ 1,321	\$ 2,290	\$ 1,309	\$ 1,731
Per Total kWh Purchased	\$ 0.070	\$ 0.071	\$ 0.072	\$ 0.070	\$ 0.062	\$ 0.071
Avg monthly kWh consumed per customer	1,425	1,834	1,523	2,716	1,753	2,033
Avg Peak (kW) per Customer	2.57	4.09	3.15	4.99	3.56	3.94
OM&A Per Customer	\$ 736.22	\$ 232.03	\$ 177.72	\$ 206.70	\$ 338.07	\$ 244.11
Net Income (Loss) Per Customer	\$ 302.06	\$ 11.20	\$ 44.93	\$ 97.83	\$ 95.76	\$ 32.72
Net Fixed Assets per Customer	\$ 5,601	\$ 1,347	\$ 1,109	\$ 1,770	\$ 1,577	\$ 1,443
SERVICE QUALITY INDICATORS						
% Completed within approved time						
Low Voltage Connections	100.00	100.00	100.00	100.00	95.70	100.00
High Voltage Connections	-	-	-	100.00	-	100.00
Cable Locates	78.80	100.00	98.50	99.10	98.00	99.70
Phone Calls	78.10	88.00	80.90	81.60	88.60	87.70
Annual Appointments	100.00	100.00	100.00	100.00	99.20	100.00
Annual Written Response	100.00	100.00	100.00	100.00	97.70	99.30
Emergency Urban Response	100.00	92.50	100.00	93.90	93.10	100.00
Emergency Rural Response	100.00	-	100.00	-	100.00	100.00
Service Reliability Indices						
Saidi-Annual	7.54	1.41	3.39	0.57	7.10	1.44
Saifi-Annual	2.45	1.09	1.69	1.42	2.63	1.04
Caidi-Annual	3.08	1.29	2.01	0.40	2.70	1.39



Individual Electricity Distributors For the year ended December 31, 2008 (Alphabetically Listed)	Hearst Power Distribution Company Limited	Horizon Utilities Corporation	Hydro 2000 Inc.	Hydro Hawkesbury Inc.	Hydro One Brampton Networks Inc.	Hydro One Networks Inc.
UNITIZED STATISTICS						
# of Customers per sq km of Service Area	29.71	549.17	130.78	671.88	481.73	1.83
# of Customers per km of Line	40.63	71.02	56.05	82.69	47.22	9.85
Average Revenue from Distribution						
Per Customer annually	\$ 234.74	\$ 388.13	\$ 246.05	\$ 218.11	\$ 494.23	\$ 846.46
Per Total kWh Purchased	\$ 0.008	\$ 0.015	\$ 0.011	\$ 0.006	\$ 0.017	\$ 0.042
Average Cost of Power						
Per Customer annually	\$ 2,262	\$ 1,599	\$ 1,696	\$ 2,528	\$ 2,129	\$ 1,603
Per Total kWh Purchased	\$ 0.070	\$ 0.061	\$ 0.075	\$ 0.070	\$ 0.070	\$ 0.073
Avg monthly kWh consumed per customer	2,680	2,193	1,880	3,014	2,516	1,821
Avg Peak (kW) per Customer	5.33	3.92	3.68	5.74	4.71	2.62
OM&A Per Customer	\$ 251.83	\$ 172.40	\$ 207.48	\$ 148.36	\$ 141.02	\$ 391.67
Net Income (Loss) Per Customer	\$ (15.94)	\$ 63.75	\$ 10.43	\$ 11.81	\$ 84.54	\$ 97.39
Net Fixed Assets per Customer	\$ 357	\$ 1,319	\$ 351	\$ 352	\$ 2,371	\$ 3,578
SERVICE QUALITY INDICATORS						
% Completed within approved time						
Low Voltage Connections	100.00	99.60	100.00	100.00	100.00	94.10
High Voltage Connections	-	-	-	100.00	100.00	-
Cable Locates	100.00	99.80	100.00	100.00	98.40	91.40
Phone Calls	94.00	80.90	99.60	99.90	81.80	82.00
Annual Appointments	100.00	97.00	100.00	100.00	99.90	94.90
Annual Written Response	100.00	97.60	100.00	100.00	100.00	99.90
Emergency Urban Response	100.00	96.40	-	100.00	99.20	-
Emergency Rural Response	-	-	100.00	-	-	64.80
Service Reliability Indices						
Saidi-Annual	0.99	1.49	0.41	2.94	0.77	21.60
Saifi-Annual	0.26	1.80	1.19	1.57	1.12	4.79
Caidi-Annual	3.83	0.83	0.35	1.88	0.69	4.51



Individual Electricity Distributors For the year ended December 31, 2008 (Alphabetically Listed)	Hydro Ottawa Limited	Innisfil Hydro Distribution Systems Limited	Kenora Hydro Electric Corporation Ltd.	Kingston Hydro Corporation	Kitchener-Wilmot Hydro Inc.	Lakefront Utilities Inc.
UNITIZED STATISTICS						
# of Customers per sq km of Service Area	264.17	49.56	232.63	841.88	208.40	341.30
# of Customers per km of Line	54.48	22.37	56.97	69.79	44.98	80.83
Average Revenue from Distribution						
Per Customer annually	\$ 479.04	\$ 488.10	\$ 380.42	\$ 375.55	\$ 400.42	\$ 443.02
Per Total kWh Purchased	\$ 0.018	\$ 0.031	\$ 0.019	\$ 0.014	\$ 0.018	\$ 0.014
Average Cost of Power						
Per Customer annually	\$ 1,866	\$ 1,192	\$ 1,356	\$ 1,820	\$ 1,636	\$ 2,142
Per Total kWh Purchased	\$ 0.069	\$ 0.072	\$ 0.066	\$ 0.066	\$ 0.071	\$ 0.069
Avg monthly kWh consumed per customer	2,248	1,388	1,713	2,304	1,919	2,577
Avg Peak (kW) per Customer	4.01	2.85	3.27	4.08	3.62	4.62
OM&A Per Customer	\$ 180.45	\$ 245.66	\$ 292.64	\$ 193.03	\$ 149.05	\$ 204.52
Net Income (Loss) Per Customer	\$ 74.71	\$ 59.09	\$ 8.58	\$ 41.90	\$ 61.28	\$ 113.67
Net Fixed Assets per Customer	\$ 1,696	\$ 1,206	\$ 1,406	\$ 971	\$ 1,637	\$ 1,166
SERVICE QUALITY INDICATORS						
% Completed within approved time						
Low Voltage Connections	97.80	94.70	100.00	100.00	90.00	100.00
High Voltage Connections	100.00	-	-	-	100.00	100.00
Cable Locates	98.40	87.00	100.00	52.00	100.00	100.00
Phone Calls	72.90	100.00	88.30	67.30	85.20	100.00
Annual Appointments	99.90	100.00	100.00	99.00	93.10	100.00
Annual Written Response	99.60	100.00	100.00	100.00	98.30	100.00
Emergency Urban Response	94.40	-	100.00	98.00	98.20	99.20
Emergency Rural Response	-	100.00	-	-	100.00	100.00
Service Reliability Indices						
Saidi-Annual	0.98	5.82	10.00	0.68	1.11	1.77
Saifi-Annual	1.02	4.45	3.17	0.74	1.24	0.80
Caidi-Annual	0.97	1.31	3.16	0.92	0.90	2.22



Individual Electricity Distributors For the year ended December 31, 2008 (Alphabetically Listed)	Lakeland Power Distribution Ltd.	London Hydro Inc.	Middlesex Power Distribution Corporation	Midland Power Utility Corporation	Milton Hydro Distribution Inc.	Newbury Power Inc.
UNITIZED STATISTICS						
# of Customers per sq km of Service Area	64.55	341.56	334.57	338.65	68.58	-
# of Customers per km of Line	26.18	51.71	66.28	58.90	29.30	-
Average Revenue from Distribution						
Per Customer annually	\$ 447.27	\$ 385.04	\$ 470.74	\$ 432.41	\$ 442.94	-
Per Total kWh Purchased	\$ 0.019	\$ 0.017	\$ 0.017	\$ 0.014	\$ 0.016	-
Average Cost of Power						
Per Customer annually	\$ 1,680	\$ 1,694	\$ 2,063	\$ 2,405	\$ 1,971	-
Per Total kWh Purchased	\$ 0.068	\$ 0.071	\$ 0.072	\$ 0.073	\$ 0.070	-
Avg monthly kWh consumed per customer	2,060	1,995	2,382	2,738	2,340	-
Avg Peak (kW) per Customer	3.93	3.76	4.54	5.20	4.30	-
OM&A Per Customer	\$ 287.66	\$ 186.71	\$ 201.97	\$ 258.57	\$ 201.65	-
Net Income (Loss) Per Customer	\$ 41.60	\$ 47.57	\$ 117.04	\$ 46.37	\$ 77.60	-
Net Fixed Assets per Customer	\$ 1,331	\$ 1,289	\$ 1,117	\$ 1,183	\$ 1,522	-
SERVICE QUALITY INDICATORS						
% Completed within approved time						
Low Voltage Connections	100.00	100.00	100.00	100.00	99.60	-
High Voltage Connections	-	-	-	100.00	-	-
Cable Locates	99.90	94.20	99.40	95.40	99.80	-
Phone Calls	99.20	76.00	-	99.90	78.90	-
Annual Appointments	98.40	100.00	98.80	96.00	100.00	-
Annual Written Response	98.90	100.00	100.00	94.30	100.00	-
Emergency Urban Response	100.00	98.20	93.80	100.00	100.00	-
Emergency Rural Response	100.00	-	-	-	95.70	-
Service Reliability Indices						
Saidi-Annual	99.01	2.29	7.66	2.84	1.00	-
Saifi-Annual	22.88	2.39	6.37	0.99	0.75	-
Caidi-Annual	4.33	0.96	1.20	2.86	1.33	-



Individual Electricity Distributors For the year ended December 31, 2008 (Alphabetically Listed)	Newmarket - Tay Power Distribution Ltd.	Niagara Peninsula Energy Inc.	Niagara-on-the- Lake Hydro Inc.	Norfolk Power Distribution Inc.	North Bay Hydro Distribution Limited	Northern Ontario Wires Inc.
UNITIZED STATISTICS						
# of Customers per sq km of Service Area	430.73	60.77	58.63	27.14	71.72	216.25
# of Customers per km of Line	30.36	27.61	23.14	27.22	38.67	16.36
Average Revenue from Distribution						
Per Customer annually	\$ 497.33	\$ 545.96	\$ 609.54	\$ 536.53	\$ 445.67	\$ 401.46
Per Total kWh Purchased	\$ 0.022	\$ 0.022	\$ 0.027	\$ 0.027	\$ 0.019	\$ 0.020
Average Cost of Power						
Per Customer annually	\$ 1,695	\$ 1,901	\$ 1,616	\$ 1,502	\$ 1,735	\$ 1,526
Per Total kWh Purchased	\$ 0.072	\$ 0.076	\$ 0.069	\$ 0.071	\$ 0.069	\$ 0.071
Avg monthly kWh consumed per customer	1,972	2,093	1,954	1,758	2,095	1,803
Avg Peak (kW) per Customer	3.84	3.95	3.86	3.46	3.79	3.34
OM&A Per Customer	\$ 199.58	\$ 254.55	\$ 222.31	\$ 279.51	\$ 235.78	\$ 321.23
Net Income (Loss) Per Customer	\$ 82.32	\$ 51.60	\$ 92.14	\$ 28.80	\$ 59.82	\$ 15.19
Net Fixed Assets per Customer	\$ 1,534	\$ 2,200	\$ 2,488	\$ 2,264	\$ 1,290	\$ 620
SERVICE QUALITY INDICATORS						
% Completed within approved time						
Low Voltage Connections	97.60	89.40	100.00	100.00	100.00	100.00
High Voltage Connections	100.00	100.00	100.00	-	100.00	100.00
Cable Locates	93.80	98.70	100.00	100.00	92.20	100.00
Phone Calls	88.30	99.10	-	92.20	94.30	100.00
Annual Appointments	99.30	100.00	100.00	-	100.00	100.00
Annual Written Response	100.00	100.00	100.00	74.70	100.00	100.00
Emergency Urban Response	100.00	87.00	100.00	100.00	100.00	97.20
Emergency Rural Response	-	-	100.00	100.00	100.00	-
Service Reliability Indices						
Saidi-Annual	1.34	1.60	4.08	2.53	2.73	3.65
Saifi-Annual	0.51	0.99	2.74	1.41	2.70	1.21
Caidi-Annual	2.65	1.61	1.49	1.80	1.01	3.00



Individual Electricity Distributors For the year ended December 31, 2008 (Alphabetically Listed)	Oakville Hydro Electricity Distribution Inc.	Orangeville Hydro Limited	Orillia Power Distribution Corporation	Oshawa PUC Networks Inc.	Ottawa River Power Corporation	PUC Distribution Inc.
UNITIZED STATISTICS						
# of Customers per sq km of Service Area	433.83	637.50	473.96	362.33	296.60	95.71
# of Customers per km of Line	43.87	63.35	42.10	54.66	71.10	44.96
Average Revenue from Distribution						
Per Customer annually	\$ 476.52	\$ 429.12	\$ 534.73	\$ 389.54	\$ 348.61	\$ 440.92
Per Total kWh Purchased	\$ 0.019	\$ 0.018	\$ 0.021	\$ 0.018	\$ 0.018	\$ 0.020
Average Cost of Power						
Per Customer annually	\$ 1,847	\$ 1,718	\$ 1,781	\$ 1,495	\$ 1,419	\$ 1,451
Per Total kWh Purchased	\$ 0.070	\$ 0.071	\$ 0.069	\$ 0.067	\$ 0.073	\$ 0.064
Avg monthly kWh consumed per customer	2,195	2,030	2,150	1,853	1,627	1,886
Avg Peak (kW) per Customer	4.45	3.83	3.85	3.56	2.71	3.34
OM&A Per Customer	\$ 163.14	\$ 215.23	\$ 298.33	\$ 170.01	\$ 228.84	\$ 222.84
Net Income (Loss) Per Customer	\$ 71.19	\$ 63.14	\$ 47.04	\$ 76.27	\$ 31.12	\$ 23.66
Net Fixed Assets per Customer	\$ 1,763	\$ 1,290	\$ 1,241	\$ 977	\$ 788	\$ 1,141
SERVICE QUALITY INDICATORS						
% Completed within approved time						
Low Voltage Connections	96.60	100.00	100.00	100.00	100.00	88.70
High Voltage Connections	-	100.00	-	100.00	-	100.00
Cable Locates	93.50	100.00	100.00	100.00	100.00	98.60
Phone Calls	81.40	100.00	98.50	80.60	99.70	79.40
Annual Appointments	100.00	100.00	100.00	100.00	100.00	99.90
Annual Written Response	100.00	100.00	100.00	100.00	100.00	100.00
Emergency Urban Response	-	100.00	100.00	100.00	100.00	78.00
Emergency Rural Response	-	-	-	-	-	-
Service Reliability Indices						
Saidi-Annual	1.54	1.52	1.69	1.73	6.56	2.23
Saifi-Annual	1.60	1.09	2.27	1.80	5.77	1.71
Caidi-Annual	0.96	1.39	0.74	0.96	1.14	1.30



Individual Electricity Distributors For the year ended December 31, 2008 (Alphabetically Listed)	Parry Sound Power Corporation	Peterborough Distribution Incorporated	Port Colborne Hydro Inc.	PowerStream Inc.	Renfrew Hydro Inc.	Rideau St. Lawrence Distribution Inc.
UNITIZED STATISTICS						
# of Customers per sq km of Service Area	223.73	536.70	75.65	382.15	322.62	325.50
# of Customers per km of Line	26.22	62.45	29.68	40.03	76.25	66.58
Average Revenue from Distribution						
Per Customer annually	\$ 556.61	\$ 401.47	\$ 528.01	\$ 486.80	\$ 401.35	\$ 342.87
Per Total kWh Purchased	\$ 0.021	\$ 0.017	\$ 0.025	\$ 0.017	\$ 0.017	\$ 0.018
Average Cost of Power						
Per Customer annually	\$ 1,975	\$ 1,693	\$ 1,588	\$ 1,984	\$ 1,818	\$ 1,497
Per Total kWh Purchased	\$ 0.071	\$ 0.068	\$ 0.071	\$ 0.069	\$ 0.072	\$ 0.072
Avg monthly kWh consumed per customer	2,315	2,067	1,862	2,382	2,117	1,726
Avg Peak (kW) per Customer	4.16	3.86	3.77	4.67	3.99	3.69
OM&A Per Customer	\$ 362.37	\$ 204.06	\$ 434.11	\$ 189.64	\$ 251.23	\$ 253.13
Net Income (Loss) Per Customer	\$ 50.54	\$ 39.65	\$ 7.93	\$ 72.79	\$ 23.52	\$ 36.53
Net Fixed Assets per Customer	\$ 1,189	\$ 1,358	\$ 1,064	\$ 1,957	\$ 988	\$ 658
SERVICE QUALITY INDICATORS						
% Completed within approved time						
Low Voltage Connections	100.00	100.00	100.00	95.20	100.00	100.00
High Voltage Connections	-	100.00	-	-	100.00	100.00
Cable Locates	100.00	97.70	100.00	92.50	100.00	100.00
Phone Calls	100.00	75.30	88.90	81.70	95.50	98.40
Annual Appointments	100.00	99.30	-	100.00	100.00	97.60
Annual Written Response	100.00	98.40	100.00	97.60	-	100.00
Emergency Urban Response	100.00	91.70	100.00	96.60	100.00	100.00
Emergency Rural Response	100.00	-	-	-	-	-
Service Reliability Indices						
Saidi-Annual	16.47	2.91	1.79	0.88	2.70	2.94
Saifi-Annual	11.26	2.15	1.62	0.92	2.61	1.21
Caidi-Annual	1.46	1.36	1.11	0.95	1.04	2.44



Individual Electricity Distributors For the year ended December 31, 2008 (Alphabetically Listed)	Sioux Lookout Hydro Inc.	St. Thomas Energy Inc.	Thunder Bay Hydro Electricity Distribution Inc.	Tillsonburg Hydro Inc.	Toronto Hydro- Electric System Limited	Veridian Connections Inc.
UNITIZED STATISTICS						
# of Customers per sq km of Service Area	5.10	488.88	129.56	275.92	1085.94	173.49
# of Customers per km of Line	12.96	66.12	42.12	42.45	69.70	51.93
Average Revenue from Distribution						
Per Customer annually	\$ 592.08	\$ 413.85	\$ 356.21	\$ 379.05	\$ 688.41	\$ 408.69
Per Total kWh Purchased	\$ 0.021	\$ 0.019	\$ 0.017	\$ 0.012	\$ 0.019	\$ 0.018
Average Cost of Power						
Per Customer annually	\$ 2,034	\$ 1,569	\$ 1,347	\$ 2,363	\$ 2,733	\$ 1,678
Per Total kWh Purchased	\$ 0.070	\$ 0.072	\$ 0.064	\$ 0.071	\$ 0.072	\$ 0.071
Avg monthly kWh consumed per customer	2,417	1,819	1,764	2,759	3,171	1,972
Avg Peak (kW) per Customer	4.86	3.48	3.22	5.39	5.79	3.66
OM&A Per Customer	\$ 419.52	\$ 191.96	\$ 236.72	\$ 246.42	\$ 245.70	\$ 180.13
Net Income (Loss) Per Customer	\$ 34.76	\$ 59.65	\$ 11.57	\$ 61.29	\$ 111.28	\$ 59.97
Net Fixed Assets per Customer	\$ 1,805	\$ 1,194	\$ 1,256	\$ 847	\$ 2,709	\$ 1,291
SERVICE QUALITY INDICATORS						
% Completed within approved time						
Low Voltage Connections	100.00	100.00	92.00	-	96.50	99.40
High Voltage Connections	-	-	100.00	-	97.30	97.10
Cable Locates	100.00	88.80	92.20	-	93.30	99.90
Phone Calls	100.00	77.90	97.20	-	87.10	83.10
Annual Appointments	100.00	100.00	100.00	-	99.00	99.90
Annual Written Response	100.00	100.00	100.00	-	98.00	100.00
Emergency Urban Response	97.10	100.00	97.00	-	86.20	100.00
Emergency Rural Response	100.00	-	93.30	-	-	100.00
Service Reliability Indices						
Saidi-Annual	0.42	0.80	1.64	-	1.24	2.36
Saifi-Annual	0.26	2.01	3.09	-	1.76	2.41
Caidi-Annual	1.62	0.40	0.53	-	0.70	0.98



Individual Electricity Distributors For the year ended December 31, 2008 (Alphabetically Listed)	Wasaga Distribution Inc.	Waterloo North Hydro Inc.	Welland Hydro- Electric System Corp.	Wellington North Power Inc.	West Coast Huron Energy Inc.	West Perth Power Inc.
UNITIZED STATISTICS						
# of Customers per sq km of Service Area	191.15	75.12	258.40	252.50	484.75	-
# of Customers per km of Line	50.26	32.74	49.00	47.13	59.66	-
Average Revenue from Distribution						
Per Customer annually	\$ 306.31	\$ 507.47	\$ 340.05	\$ 446.32	\$ 443.31	-
Per Total kWh Purchased	\$ 0.031	\$ 0.019	\$ 0.016	\$ 0.017	\$ 0.011	-
Average Cost of Power						
Per Customer annually	\$ 739	\$ 1,842	\$ 1,617	\$ 1,691	\$ 1,668	-
Per Total kWh Purchased	\$ 0.069	\$ 0.065	\$ 0.072	\$ 0.059	\$ 0.041	-
Avg monthly kWh consumed per customer	886	2,346	1,870	2,369	3,415	-
Avg Peak (kW) per Customer	1.77	4.43	3.68	4.28	6.19	-
OM&A Per Customer	\$ 161.97	\$ 177.14	\$ 209.50	\$ 336.29	\$ 334.98	-
Net Income (Loss) Per Customer	\$ 50.04	\$ 108.25	\$ 21.42	\$ (1.94)	\$ 53.02	-
Net Fixed Assets per Customer	\$ 740	\$ 1,955	\$ 952	\$ 1,299	\$ 965	-
SERVICE QUALITY INDICATORS						
% Completed within approved time						
Low Voltage Connections	100.00	100.00	97.50	100.00	100.00	100.00
High Voltage Connections	-	100.00	-	-	-	-
Cable Locates	100.00	99.60	99.60	99.00	100.00	100.00
Phone Calls	100.00	88.60	99.90	100.00	100.00	98.90
Annual Appointments	100.00	99.90	99.80	100.00	100.00	-
Annual Written Response	100.00	100.00	100.00	100.00	99.60	97.60
Emergency Urban Response	93.20	87.40	95.20	100.00	100.00	100.00
Emergency Rural Response	100.00	96.70	-	-	-	-
Service Reliability Indices						
Saidi-Annual	9.13	1.01	1.41	4.77	15.08	28.11
Saifi-Annual	6.30	1.10	1.72	2.79	1.03	5.36
Caidi-Annual	1.45	0.92	0.82	1.71	14.63	5.25



Individual Electricity Distributors For the year ended December 31, 2008 (Alphabetically Listed)	Westario Power Inc.	Whitby Hydro Electric Corporation	Woodstock Hydro Services Inc.
<u>UNITIZED STATISTICS</u>			
# of Customers per sq km of Service Area	440.65	266.84	505.00
# of Customers per km of Line	49.07	38.08	59.53
Average Revenue from Distribution			
Per Customer annually	\$ 383.20	\$ 478.45	\$ 480.67
Per Total kWh Purchased	\$ 0.018	\$ 0.022	\$ 0.018
Average Cost of Power			
Per Customer annually	\$ 1,450	\$ 1,610	\$ 1,872
Per Total kWh Purchased	\$ 0.065	\$ 0.070	\$ 0.067
Avg monthly kWh consumed per customer	1,848	1,907	2,317
Avg Peak (kW) per Customer	3.35	3.68	4.37
OM&A Per Customer	\$ 231.73	\$ 209.23	\$ 222.77
Net Income (Loss) Per Customer	\$ 2.69	\$ 33.47	\$ 61.34
Net Fixed Assets per Customer	\$ 1,372	\$ 1,570	\$ 1,340
<u>SERVICE QUALITY INDICATORS</u>			
% Completed within approved time			
Low Voltage Connections	94.40	100.00	99.60
High Voltage Connections	-	100.00	-
Cable Locates	91.20	94.00	100.00
Phone Calls	91.20	90.60	99.90
Annual Appointments	94.00	100.00	100.00
Annual Written Response	95.90	100.00	100.00
Emergency Urban Response	87.90	100.00	100.00
Emergency Rural Response	-	100.00	-
Service Reliability Indices			
Saidi-Annual	40.25	0.24	1.26
Saifi-Annual	12.85	0.43	1.37
Caidi-Annual	3.13	0.57	0.92



Individual Electricity Distributors For the year ended December 31, 2008 (Alphabetically Listed)	Atikokan Hydro Inc.	Barrie Hydro Distribution Inc.	Bluewater Power Distribution Corporation	Brant County Power Inc.	Brantford Power Inc.	Burlington Hydro Inc.
Statistics by Customer Class						
Residential Customers						
Number of Customers	1,416	62,513	31,626	8,066	33,869	56,839
kWh Billed	11,183,350	547,117,234	261,354,534	79,817,804	291,972,257	557,752,794
Distribution Revenue	\$ 614,677	\$ 18,539,980	\$ 8,150,103	\$ 3,145,523	\$ 8,530,712	\$ 16,316,295
kWh Billed per customer	7,898	8,752	8,264	9,896	8,621	9,813
Distribution Revenue per Customer	\$ 434	\$ 297	\$ 258	\$ 390	\$ 252	\$ 287
General Service <50kW Customers						
Number of Customers	238	6,375	4,172	1,288	3,196	4,863
kWh Billed	5,817,379	202,309,900	118,714,783	35,700,290	110,294,842	185,396,682
Distribution Revenue	\$ 218,539	\$ 4,188,343	\$ 2,605,427	\$ 951,536	\$ 1,552,137	\$ 3,879,213
kWh Billed per customer	24,443	31,735	28,455	27,718	34,510	38,124
Distribution Revenue per Customer	\$ 918	\$ 657	\$ 625	\$ 739	\$ 486	\$ 798
General Service >50kW and Larger User (>5000kW) Customers						
Number of General Service Customers	22	740	416	102	408	1,035
Number of Larger User	0	0	4	0	0	0
kWh Billed	9,026,226	778,495,947	702,853,345	165,287,945	609,170,936	972,943,708
Distribution Revenue	\$ 60,318	\$ 6,581,566	\$ 4,538,019	\$ 1,680,717	\$ 5,155,465	\$ 6,429,116
kWh Billed per customer	410,283	1,052,022	1,673,460	1,620,470	1,493,066	940,042
Distribution Revenue per Customer	\$ 2,742	\$ 8,894	\$ 10,805	\$ 16,478	\$ 12,636	\$ 6,212



Individual Electricity Distributors For the year ended December 31, 2008 (Alphabetically Listed)	COLLUS Power Corp.	Cambridge and North Dumfries Hydro Inc.	Canadian Niagara Power Inc.- Fort Erie	Centre Wellington Hydro Ltd.	Chapleau Public Utilities Corporation	Chatham-Kent Hydro Inc.
Statistics by Customer Class						
Residential Customers						
Number of Customers	12,700	43,918	14,182	5,562	1,148	28,504
kWh Billed	114,695,863	384,779,246	111,437,380	44,627,090	15,056,281	232,973,162
Distribution Revenue	\$ 3,252,671	\$ 10,564,174	\$ 4,190,636	\$ 1,506,903	\$ 410,560	\$ 7,847,771
kWh Billed per customer	9,031	8,761	7,858	8,024	13,115	8,173
Distribution Revenue per Customer	\$ 256	\$ 241	\$ 295	\$ 271	\$ 358	\$ 275
General Service <50kW Customers						
Number of Customers	1,566	4,668	1,290	687	173	3,155
kWh Billed	44,817,201	172,229,323	34,576,746	21,590,412	5,276,262	101,240,646
Distribution Revenue	\$ 709,263	\$ 3,040,065	\$ 958,580	\$ 463,402	\$ 109,511	\$ 2,158,653
kWh Billed per customer	28,619	36,896	26,804	31,427	30,499	32,089
Distribution Revenue per Customer	\$ 453	\$ 651	\$ 743	\$ 675	\$ 633	\$ 684
General Service >50kW and Larger User (>5000kW) Customers						
Number of General Service Customers	120	708	144	60	14	433
Number of Larger User	1	3	0	0	0	2
kWh Billed	160,942,319	953,302,727	138,863,811	92,305,001	7,928,332	476,987,983
Distribution Revenue	\$ 515,006	\$ 7,594,127	\$ 2,874,738	\$ 439,038	\$ 55,323	\$ 3,229,304
kWh Billed per customer	1,330,102	1,340,791	964,332	1,538,417	566,309	1,096,524
Distribution Revenue per Customer	\$ 4,256	\$ 10,681	\$ 19,963	\$ 7,317	\$ 3,952	\$ 7,424



Individual Electricity Distributors For the year ended December 31, 2008 (Alphabetically Listed)	Clinton Power Corporation	Cooperative Hydro Embrun Inc.	E.L.K. Energy Inc.	ENWIN Utilities Ltd.	Eastern Ontario Power Inc.	Enersource Hydro Mississauga Inc.
Statistics by Customer Class						
Residential Customers						
Number of Customers	-	1,743	9,638	76,400	3,100	165,882
kWh Billed	-	19,644,024	93,091,229	637,053,725	29,699,161	1,590,715,870
Distribution Revenue	-	\$ 423,943	\$ 876,520	\$ 20,910,961	\$ 801,391	\$ 41,924,681
kWh Billed per customer	-	11,270	9,659	8,338	9,580	9,589
Distribution Revenue per Customer	-	\$ 243	\$ 91	\$ 274	\$ 259	\$ 253
General Service <50kW Customers						
Number of Customers	-	181	1,099	7,040	408	16,693
kWh Billed	-	5,066,428	28,210,674	235,354,276	13,394,507	710,486,431
Distribution Revenue	-	\$ 95,246	\$ 86,927	\$ 5,760,442	\$ 360,864	\$ 15,810,098
kWh Billed per customer	-	27,991	25,669	33,431	32,830	42,562
Distribution Revenue per Customer	-	\$ 526	\$ 79	\$ 818	\$ 884	\$ 947
General Service >50kW and Larger User (>5000kW) Customers						
Number of General Service Customers	-	12	116	1,194	35	4,344
Number of Larger User	-	0	0	10	0	10
kWh Billed	-	4,384,838	128,808,729	1,566,468,256	19,273,553	5,753,922,423
Distribution Revenue	-	\$ 68,555	\$ 558,284	\$ 17,281,097	\$ 562,420	\$ 50,852,216
kWh Billed per customer	-	365,403	1,110,420	1,301,053	550,673	1,321,526
Distribution Revenue per Customer	-	\$ 5,713	\$ 4,813	\$ 14,353	\$ 16,069	\$ 11,679



Individual Electricity Distributors For the year ended December 31, 2008 (Alphabetically Listed)	Erie Thames Powerlines Corporation	Espanola Regional Hydro Distribution Corporation	Essex Powerlines Corporation	Festival Hydro Inc.	Fort Frances Power Corporation	Grand Valley Energy Inc.
Statistics by Customer Class						
Residential Customers						
Number of Customers	12,747	2,848	25,711	17,178	3,520	594
kWh Billed	115,637,295	32,354,293	261,929,749	140,987,205	39,844,007	5,882,230
Distribution Revenue	\$ 3,060,717	\$ 734,833	\$ 6,857,908	\$ 5,097,595	\$ 800,223	\$ 164,894
kWh Billed per customer	9,072	11,360	10,187	8,207	11,319	9,903
Distribution Revenue per Customer	\$ 240	\$ 258	\$ 267	\$ 297	\$ 227	\$ 278
General Service <50kW Customers						
Number of Customers	1,406	485	1,993	1,988	435	80
kWh Billed	35,519,591	14,609,190	71,666,181	67,966,501	16,264,075	1,458,212
Distribution Revenue	\$ 856,157	\$ 331,803	\$ 591,925	\$ 1,645,211	\$ 239,889	\$ 35,524
kWh Billed per customer	25,263	30,122	35,959	34,188	37,389	18,228
Distribution Revenue per Customer	\$ 609	\$ 684	\$ 297	\$ 828	\$ 551	\$ 444
General Service >50kW and Larger User (>5000kW) Customers						
Number of General Service Customers	157	16	225	226	46	7
Number of Larger User	2	0	0	2	0	0
kWh Billed	242,775,508	15,996,077	207,165,021	380,372,511	26,674,004	1,639,298
Distribution Revenue	\$ 2,079,010	\$ 77,035	\$ 2,161,534	\$ 2,344,140	\$ 327,049	\$ 31,125
kWh Billed per customer	1,526,890	999,755	920,733	1,668,300	579,870	234,185
Distribution Revenue per Customer	\$ 13,076	\$ 4,815	\$ 9,607	\$ 10,281	\$ 7,110	\$ 4,446



Individual Electricity Distributors For the year ended December 31, 2008 (Alphabetically Listed)	Great Lakes Power Ltd.	Greater Sudbury Hydro Inc.	Grimsby Power Incorporated	Guelph Hydro Electric Systems Inc.	Haldimand County Hydro Inc.	Halton Hills Hydro Inc.
Statistics by Customer Class						
Residential Customers						
Number of Customers	10,601	41,634	9,092	44,640	18,245	18,881
kWh Billed	87,951,272	411,072,289	91,344,616	366,970,148	171,781,095	220,683,563
Distribution Revenue	\$ 8,230,032	\$ 12,176,482	\$ 3,170,552	\$ 13,247,515	\$ 7,712,570	\$ 5,190,474
kWh Billed per customer	8,297	9,873	10,047	8,221	9,415	11,688
Distribution Revenue per Customer	\$ 776	\$ 292	\$ 349	\$ 297	\$ 423	\$ 275
General Service <50kW Customers						
Number of Customers	939	4,097	739	3,712	2,433	1,741
kWh Billed	27,331,222	147,502,360	19,443,260	167,262,372	59,193,786	58,074,026
Distribution Revenue	\$ 1,311,440	\$ 3,692,864	\$ 403,047	\$ 3,371,120	\$ 1,838,918	\$ 1,090,779
kWh Billed per customer	29,107	36,003	26,310	45,060	24,330	33,357
Distribution Revenue per Customer	\$ 1,397	\$ 901	\$ 545	\$ 908	\$ 756	\$ 627
General Service >50kW and Larger User (>5000kW) Customers						
Number of General Service Customers	46	484	106	558	137	196
Number of Larger User	1	0	0	4	0	0
kWh Billed	61,991,075	399,285,797	68,233,798	1,056,180,242	118,305,016	218,820,713
Distribution Revenue	\$ 830,817	\$ 5,249,548	\$ 476,172	\$ 6,810,599	\$ 1,854,267	\$ 2,358,075
kWh Billed per customer	1,318,959	824,971	643,715	1,879,324	863,540	1,116,432
Distribution Revenue per Customer	\$ 17,677	\$ 10,846	\$ 4,492	\$ 12,119	\$ 13,535	\$ 12,031



Individual Electricity Distributors For the year ended December 31, 2008 (Alphabetically Listed)	Hearst Power Distribution Company Limited	Horizon Utilities Corporation	Hydro 2000 Inc.	Hydro Hawkesbury Inc.	Hydro One Brampton Networks Inc.	Hydro One Networks Inc.
Statistics by Customer Class						
Residential Customers						
Number of Customers	2,327	211,826	1,019	4,724	120,395	1,077,500
kWh Billed	26,743,823	1,641,702,487	15,306,507	55,769,040	1,136,600,000	12,410,000,000
Distribution Revenue	\$ 494,512	\$ 61,913,757	\$ 168,316	\$ 448,425	\$ 33,893,035	\$ 581,560,000
kWh Billed per customer	11,493	7,750	15,021	11,805	9,441	11,517
Distribution Revenue per Customer	\$ 213	\$ 292	\$ 165	\$ 95	\$ 282	\$ 540
General Service <50kW Customers						
Number of Customers	390	19,906	146	571	7,552	109,722
kWh Billed	12,506,783	611,514,960	5,064,428	21,600,638	304,000,000	8,319,000,000
Distribution Revenue	\$ 144,231	\$ 10,323,180	\$ 48,046	\$ 93,193	\$ 7,248,414	\$ 254,417,000
kWh Billed per customer	32,069	30,720	34,688	37,829	40,254	75,819
Distribution Revenue per Customer	\$ 370	\$ 519	\$ 329	\$ 163	\$ 960	\$ 2,319
General Service >50kW and Larger User (>5000kW) Customers						
Number of General Service Customers	46	2,203	12	79	1,632	0
Number of Larger User	0	12	0	1	6	31
kWh Billed	44,211,649	3,706,067,552	5,074,157	116,465,829	2,444,900,000	1,671,000,000
Distribution Revenue	\$ 242,993	\$ 15,186,181	\$ 18,062	\$ 164,906	\$ 19,296,664	\$ 9,451,000
kWh Billed per customer	961,123	1,673,168	422,846	1,455,823	1,492,613	53,903,226
Distribution Revenue per Customer	\$ 5,282	\$ 6,856	\$ 1,505	\$ 2,061	\$ 11,781	-



Individual Electricity Distributors For the year ended December 31, 2008 (Alphabetically Listed)	Hydro Ottawa Limited	Innisfil Hydro Distribution Systems Limited	Kenora Hydro Electric Corporation Ltd.	Kingston Hydro Corporation	Kitchener-Wilmot Hydro Inc.	Lakefront Utilities Inc.
Statistics by Customer Class						
Residential Customers						
Number of Customers	264,958	13,472	4,790	23,142	75,847	7,942
kWh Billed	2,226,078,653	158,043,498	39,338,336	200,853,045	659,163,062	75,604,253
Distribution Revenue	\$ 76,337,047	\$ 5,218,864	\$ 1,147,416	\$ 5,256,358	\$ 16,733,934	\$ 1,659,971
kWh Billed per customer	8,402	11,731	8,213	8,679	8,691	9,520
Distribution Revenue per Customer	\$ 288	\$ 387	\$ 240	\$ 227	\$ 221	\$ 209
General Service <50kW Customers						
Number of Customers	23,314	925	724	3,429	7,337	1,138
kWh Billed	742,015,251	30,466,032	24,166,089	98,904,496	244,541,050	36,380,443
Distribution Revenue	\$ 18,211,759	\$ 689,102	\$ 319,176	\$ 1,879,214	\$ 4,141,813	\$ 590,690
kWh Billed per customer	31,827	32,936	33,379	28,844	33,330	31,969
Distribution Revenue per Customer	\$ 781	\$ 745	\$ 441	\$ 548	\$ 565	\$ 519
General Service >50kW and Larger User (>5000kW) Customers						
Number of General Service Customers	3,356	74	69	366	1,007	135
Number of Larger User	11	0	0	3	4	0
kWh Billed	4,532,071,673	47,709,427	45,059,367	436,416,227	1,013,291,870	168,816,120
Distribution Revenue	\$ 43,292,550	\$ 693,732	\$ 442,057	\$ 2,322,033	\$ 11,009,747	\$ 1,071,534
kWh Billed per customer	1,346,027	644,722	653,034	1,182,700	1,002,267	1,250,490
Distribution Revenue per Customer	\$ 12,858	\$ 9,375	\$ 6,407	\$ 6,293	\$ 10,890	\$ 7,937



Individual Electricity Distributors For the year ended December 31, 2008 (Alphabetically Listed)	Lakeland Power Distribution Ltd.	London Hydro Inc.	Middlesex Power Distribution Corporation	Midland Power Utility Corporation	Milton Hydro Distribution Inc.	Newbury Power Inc.
Statistics by Customer Class						
Residential Customers						
Number of Customers	7,605	130,245	6,246	5,935	22,755	-
kWh Billed	81,234,268	1,119,770,671	57,013,718	48,136,133	225,897,498	-
Distribution Revenue	\$ 2,157,329	\$ 33,408,795	\$ 2,055,504	\$ 1,716,739	\$ 6,369,003	-
kWh Billed per customer	10,682	8,597	9,128	8,111	9,927	-
Distribution Revenue per Customer	\$ 284	\$ 257	\$ 329	\$ 289	\$ 280	-
General Service <50kW Customers						
Number of Customers	1,590	11,940	687	727	2,312	-
kWh Billed	45,630,778	424,267,530	20,650,087	26,241,428	75,128,142	-
Distribution Revenue	\$ 870,648	\$ 8,697,547	\$ 288,278	\$ 456,610	\$ 1,534,094	-
kWh Billed per customer	28,699	35,533	30,058	36,095	32,495	-
Distribution Revenue per Customer	\$ 548	\$ 728	\$ 420	\$ 628	\$ 664	-
General Service >50kW and Larger User (>5000kW) Customers						
Number of General Service Customers	100	1,609	92	111	304	-
Number of Larger User	0	3	1	0	2	-
kWh Billed	90,658,716	1,765,701,699	111,996,478	139,921,311	401,102,051	-
Distribution Revenue	\$ 858,297	\$ 10,025,093	\$ 397,352	\$ 509,652	\$ 2,589,352	-
kWh Billed per customer	906,587	1,095,348	1,204,263	1,260,552	1,310,791	-
Distribution Revenue per Customer	\$ 8,583	\$ 6,219	\$ 4,273	\$ 4,591	\$ 8,462	-



Individual Electricity Distributors For the year ended December 31, 2008 (Alphabetically Listed)	Newmarket - Tay Power Distribution Ltd.	Niagara Peninsula Energy Inc.	Niagara-on-the- Lake Hydro Inc.	Norfolk Power Distribution Inc.	North Bay Hydro Distribution Limited	Northern Ontario Wires Inc.
Statistics by Customer Class						
Residential Customers						
Number of Customers	28,484	45,053	6,436	16,547	20,757	5,214
kWh Billed	268,062,456	400,445,564	63,512,671	140,646,761	213,813,392	41,990,761
Distribution Revenue	\$ 8,106,489	\$ 13,673,997	\$ 2,172,312	\$ 6,716,125	\$ 5,565,811	\$ 1,423,748
kWh Billed per customer	9,411	8,888	9,868	8,500	10,301	8,053
Distribution Revenue per Customer	\$ 285	\$ 304	\$ 338	\$ 406	\$ 268	\$ 273
General Service <50kW Customers						
Number of Customers	2,996	4,355	1,247	2,097	2,637	770
kWh Billed	95,558,426	132,146,131	35,191,729	63,584,606	89,074,899	20,388,635
Distribution Revenue	\$ 2,379,475	\$ 3,582,564	\$ 1,026,228	\$ 1,985,846	\$ 1,931,319	\$ 381,124
kWh Billed per customer	31,895	30,344	28,221	30,322	33,779	26,479
Distribution Revenue per Customer	\$ 794	\$ 823	\$ 823	\$ 947	\$ 732	\$ 495
General Service >50kW and Larger User (>5000kW) Customers						
Number of General Service Customers	394	847	115	162	275	71
Number of Larger User	0	0	0	0	0	0
kWh Billed	357,363,155	681,744,755	74,447,759	166,862,291	260,238,115	58,599,298
Distribution Revenue	\$ 4,352,783	\$ 8,274,824	\$ 1,339,859	\$ 1,571,678	\$ 2,347,632	\$ 353,088
kWh Billed per customer	907,013	804,893	647,372	1,030,014	946,320	825,342
Distribution Revenue per Customer	\$ 11,048	\$ 9,770	\$ 11,651	\$ 9,702	\$ 8,537	\$ 4,973



Individual Electricity Distributors For the year ended December 31, 2008 (Alphabetically Listed)	Oakville Hydro Electricity Distribution Inc.	Orangeville Hydro Limited	Orillia Power Distribution Corporation	Oshawa PUC Networks Inc.	Ottawa River Power Corporation	PUC Distribution Inc.
Statistics by Customer Class						
Residential Customers						
Number of Customers	55,658	9,056	11,261	47,436	8,809	28,915
kWh Billed	588,349,444	79,576,857	109,814,584	493,225,543	78,434,655	347,363,230
Distribution Revenue	\$ 17,500,816	\$ 2,775,393	\$ 3,184,956	\$ 9,920,593	\$ 2,000,425	\$ 7,340,925
kWh Billed per customer	10,571	8,787	9,752	10,398	8,904	12,013
Distribution Revenue per Customer	\$ 314	\$ 306	\$ 283	\$ 209	\$ 227	\$ 254
General Service <50kW Customers						
Number of Customers	5,533	1,019	1,386	3,822	1,429	3,381
kWh Billed	189,136,718	36,368,034	50,160,059	138,166,036	36,426,309	94,322,483
Distribution Revenue	\$ 4,174,992	\$ 701,872	\$ 1,230,430	\$ 2,798,770	\$ 631,647	\$ 2,336,789
kWh Billed per customer	34,183	35,690	36,191	36,150	25,491	27,898
Distribution Revenue per Customer	\$ 755	\$ 689	\$ 888	\$ 732	\$ 442	\$ 691
General Service >50kW and Larger User (>5000kW) Customers						
Number of General Service Customers	846	125	150	552	143	438
Number of Larger User	1	0	0	3	0	0
kWh Billed	802,223,738	122,920,950	156,131,676	523,823,973	78,455,335	261,123,945
Distribution Revenue	\$ 6,633,034	\$ 648,922	\$ 1,737,088	\$ 5,087,437	\$ 810,387	\$ 3,522,401
kWh Billed per customer	947,135	983,368	1,040,878	943,827	548,639	596,173
Distribution Revenue per Customer	\$ 7,831	\$ 5,191	\$ 11,581	\$ 9,167	\$ 5,667	\$ 8,042



Individual Electricity Distributors For the year ended December 31, 2008 (Alphabetically Listed)	Parry Sound Power Corporation	Peterborough Distribution Incorporated	Port Colborne Hydro Inc.	PowerStream Inc.	Renfrew Hydro Inc.	Rideau St. Lawrence Distribution Inc.
Statistics by Customer Class						
Residential Customers						
Number of Customers	2,723	30,342	8,151	215,323	3,603	4,966
kWh Billed	34,188,975	288,028,301	64,024,829	2,077,903,209	31,465,398	44,465,236
Distribution Revenue	\$ 971,364	\$ 7,700,558	\$ 2,559,298	\$ 57,284,967	\$ 980,208	\$ 1,040,276
kWh Billed per customer	12,556	9,493	7,855	9,650	8,733	8,954
Distribution Revenue per Customer	\$ 357	\$ 254	\$ 314	\$ 266	\$ 272	\$ 209
General Service <50kW Customers						
Number of Customers	565	3,642	1,001	25,340	523	827
kWh Billed	17,004,051	122,320,777	25,759,336	819,690,312	14,068,105	21,443,640
Distribution Revenue	\$ 353,836	\$ 2,075,034	\$ 590,027	\$ 17,353,150	\$ 281,992	\$ 315,794
kWh Billed per customer	30,096	33,586	25,734	32,348	26,899	25,929
Distribution Revenue per Customer	\$ 626	\$ 570	\$ 589	\$ 685	\$ 539	\$ 382
General Service >50kW and Larger User (>5000kW) Customers						
Number of General Service Customers	68	363	77	3,909	68	66
Number of Larger User	0	2	0	1	0	0
kWh Billed	36,120,216	402,915,679	101,312,436	3,886,072,571	55,283,988	44,381,852
Distribution Revenue	\$ 454,335	\$ 2,659,910	\$ 1,458,231	\$ 35,440,853	\$ 417,017	\$ 337,523
kWh Billed per customer	531,180	1,103,879	1,315,746	993,880	813,000	672,452
Distribution Revenue per Customer	\$ 6,681	\$ 7,287	\$ 18,938	\$ 9,064	\$ 6,133	\$ 5,114



Individual Electricity Distributors For the year ended December 31, 2008 (Alphabetically Listed)	Sioux Lookout Hydro Inc.	St. Thomas Energy Inc.	Thunder Bay Hydro Electricity Distribution Inc.	Tillsonburg Hydro Inc.	Toronto Hydro- Electric System Limited	Veridian Connections Inc.
Statistics by Customer Class						
Residential Customers						
Number of Customers	2,302	14,260	44,351	5,877	605,509	100,534
kWh Billed	33,587,664	120,297,987	351,645,318	51,050,818	5,215,687,193	942,451,035
Distribution Revenue	\$ 869,707	\$ 3,859,623	\$ 10,825,520	\$ 1,611,288	\$ 182,103,782	\$ 27,617,009
kWh Billed per customer	14,591	8,436	7,929	8,687	8,614	9,374
Distribution Revenue per Customer	\$ 378	\$ 271	\$ 244	\$ 274	\$ 301	\$ 275
General Service <50kW Customers						
Number of Customers	392	1,684	4,482	654	65,917	9,242
kWh Billed	15,226,334	40,213,832	143,329,554	24,691,423	2,392,431,871	330,817,423
Distribution Revenue	\$ 285,253	\$ 905,456	\$ 2,765,394	\$ 432,758	\$ 61,410,964	\$ 6,753,813
kWh Billed per customer	38,843	23,880	31,979	37,754	36,295	35,795
Distribution Revenue per Customer	\$ 728	\$ 538	\$ 617	\$ 662	\$ 932	\$ 731
General Service >50kW and Larger User (>5000kW) Customers						
Number of General Service Customers	40	188	528	90	12,672	1,080
Number of Larger User	0	1	0	1	47	5
kWh Billed	27,443,928	179,845,067	501,009,489	140,514,440	17,418,755,419	1,207,744,812
Distribution Revenue	\$ 299,033	\$ 1,200,195	\$ 2,771,528	\$ 309,444	\$ 201,911,936	\$ 9,129,797
kWh Billed per customer	686,098	951,561	948,882	1,544,115	1,369,507	1,113,129
Distribution Revenue per Customer	\$ 7,476	\$ 6,350	\$ 5,249	\$ 3,400	\$ 15,875	\$ 8,415



Individual Electricity Distributors For the year ended December 31, 2008 (Alphabetically Listed)	Wasaga Distribution Inc.	Waterloo North Hydro Inc.	Welland Hydro- Electric System Corp.	Wellington North Power Inc.	West Coast Huron Energy Inc.	West Perth Power Inc.
Statistics by Customer Class						
Residential Customers						
Number of Customers	10,833	44,593	19,601	3,022	3,315	-
kWh Billed	76,997,980	405,533,476	157,955,849	25,485,646	26,528,425	-
Distribution Revenue	\$ 2,719,353	\$ 13,383,026	\$ 5,140,986	\$ 697,836	\$ 773,355	-
kWh Billed per customer	7,108	9,094	8,059	8,433	8,003	-
Distribution Revenue per Customer	\$ 251	\$ 300	\$ 262	\$ 231	\$ 233	-
General Service <50kW Customers						
Number of Customers	798	5,219	1,933	462	508	-
kWh Billed	14,639,203	183,372,087	56,302,332	11,869,506	15,255,222	-
Distribution Revenue	\$ 324,350	\$ 3,898,920	\$ 772,728	\$ 209,417	\$ 169,827	-
kWh Billed per customer	18,345	35,135	29,127	25,692	30,030	-
Distribution Revenue per Customer	\$ 406	\$ 747	\$ 400	\$ 453	\$ 334	-
General Service >50kW and Larger User (>5000kW) Customers						
Number of General Service Customers	29	664	169	51	54	-
Number of Larger User	0	2	3	0	1	-
kWh Billed	22,816,641	773,257,017	247,792,489	55,564,612	111,483,732	-
Distribution Revenue	\$ 275,357	\$ 7,370,717	\$ 954,637	\$ 444,149	\$ 723,891	-
kWh Billed per customer	786,781	1,161,047	1,440,654	1,089,502	2,026,977	-
Distribution Revenue per Customer	\$ 9,495	\$ 11,067	\$ 5,550	\$ 8,709	\$ 13,162	-



Individual Electricity Distributors For the year ended December 31, 2008 (Alphabetically Listed)	Westario Power Inc.	Whitby Hydro Electric Corporation	Woodstock Hydro Services Inc.
<u>Statistics by Customer Class</u>			
Residential Customers			
Number of Customers	18,879	36,496	13,240
kWh Billed	213,227,356	346,038,642	110,536,185
Distribution Revenue	\$ 4,825,099	\$ 11,948,504	\$ 3,823,545
kWh Billed per customer	11,294	9,482	8,349
Distribution Revenue per Customer	\$ 256	\$ 327	\$ 289
General Service <50kW Customers			
Number of Customers	2,462	2,292	1,211
kWh Billed	77,921,674	76,587,390	46,728,002
Distribution Revenue	\$ 1,139,644	\$ 1,857,503	\$ 880,714
kWh Billed per customer	31,650	33,415	38,586
Distribution Revenue per Customer	\$ 463	\$ 810	\$ 727
General Service >50kW and Larger User (>5000kW) Customers			
Number of General Service Customers	251	437	193
Number of Larger User	0	0	1
kWh Billed	176,300,833	424,120,333	248,375,214
Distribution Revenue	\$ 1,647,379	\$ 3,788,094	\$ 1,771,073
kWh Billed per customer	702,394	970,527	1,280,285
Distribution Revenue per Customer	\$ 6,563	\$ 8,668	\$ 9,129



Glossary of Terms

FINANCIAL INFORMATION

	Aggregation of Trial Balance (RRR section 2.1.7.) accounts
Current Assets	1005 to 1350
Non-Current Assets	1405 to 1490
Regulatory Assets/Liability	1505 to 1595
Gross Property Plant & Equipment	1605 to 2075
Accumulated Amortization	2105 to 2180
Current Liabilities	2205 to 2296
Non-Current Liabilities excluding debt	2305 to 2435
Long Term Debt	2505 to 2550
Equity	3005 to 3065
Commodity and Distribution Revenue	4006 to 4245
Commodity Cost	4705 to 4750
Operation	4505 to 4565, 4805 to 4850, 5005 to 5096
Maintenance	4605 to 4640, 4905 to 4965, 5105 to 5195
Administration	5305 to 5695
Other Expenses	5205 to 5215
Amortization	5705 to 5740
Other Income	4305 to 4415
Other Expenses	6205 to 6225
Interest Expense	6005 to 6045
Taxes	6105 to 6115
Discontinued Operations Gains/(Losses)	6405 to 6415
Extraordinary & Other Gains/(Losses)	6305 to 6315



Glossary of Terms

FINANCIAL RATIOS

Liquidity Ratios measure the availability of cash to pay debt.

Current Ratio is a financial ratio that measures whether or not a firm has enough resources to pay its debts over the next 12 months.

Leverage Ratios are the financial statement ratios which show the degree to which the business is leveraging itself through its use of borrowed money. Long-term debt only.

Debt Ratio indicates what proportion of long-term debt a company has relative to its assets.

Debt to Equity Ratio is a financial ratio indicating the relative proportion of equity and long-term debt used to finance a company's assets.

Interest Coverage Ratio is used to determine a firm's ability to pay interest on outstanding debt.

Profitability Ratios measure the firm's use of its assets and control of its expenses to generate an acceptable rate of return.

Return on Equity measures the rate of return on the ownership interest (shareholders' equity) of the common stock owners and a firm's efficiency at generating profits from every dollar of net assets, and shows how well a company uses investment dollars to generate earnings growth. This is not regulatory return.



Glossary of Terms

GENERAL STATISTICS

Population Served is the estimated number of people served as customers of the utility.

Municipal Population is the Stats Canada population of the municipalities served. May not equal Population Served as other utilities may also serve the same community.

Seasonal Population represents cottagers etc.

Total kWh Purchased equals "Total kWh sold (excluding losses)" plus "Distribution System Losses".

Total kWh sold (excluding losses) is the total kWh consumed within service territory.

Distribution System Losses is the sum of distribution system line losses, metering error, and energy theft.

Residential Customers applies to an account taking electricity at 750 volts or less where the electricity is used exclusively in a separate metered living accommodation.

General Service < 50 kW Customers applies to a non residential account taking electricity at 750 volts or less whose average monthly maximum demand is less than, or is forecast to be less than, 50 kW.

General Service > 50 to 5,000 kW Customers applies to a non residential account whose average monthly maximum demand used for billing purposes is greater than, or is forecast to be greater than, 50 kW but less than 5,000 kW.

Large User Customers applies to an account whose average monthly maximum demand used for billing purposes is greater than, or is forecast to be greater than, 5,000 kW.

Winter Peak (kW) is the peak load on the distributor system from October to March.

Summer Peak (kW) is the peak load on the distributor system from April to September.

Average Peak (kW) is the average of daily peaks throughout the year.

Capital Additions represents the investment for assets placed in-service.



Glossary of Terms

SERVICE QUALITY INDICATORS

Low Voltage Connections is the percentage of new low voltage (<750 Volts) connection requests where the connection is made within 5 working days of all prerequisites (engineering, safety, etc.) being met.

High Voltage Connections is the percentage of new high voltage (≥ 750 Volts) connection requests where the connection is made within 10 working days of all prerequisites (engineering, safety, etc.) being met.

Cable Locates is the percentage of requests for cable locates that are completed within 5 working days (of the initial date of the request or, if the customer so designates, a specific requested date).

Phone Calls is the percentage of calls to the utility's general inquiry number that are answered in person within 30 seconds.

Annual Appointments is the percentage of appointments involving a customer premises visit where the appointment date and time (morning or afternoon) is met.

Annual Written Response is the percentage of customer inquiries relating to a customer's account and requiring a written response where the response is provided within 10 working days of receipt of the inquiry.

Emergency Urban Response is the percentage of emergency (fire, police, etc.) trouble calls where a qualified service person is on site within 60 minutes of the call. Urban areas are defined by the respective municipality.

Emergency Rural Response is the percentage of emergency (fire, police, etc.) trouble calls where a qualified service person is on site within 120 minutes of the call. Rural areas are defined by the respective municipality.

SAIDI is the average forced sustained interruption duration per customer served per year (measured in hours). Calculation is "Total Customer Hours of Interruptions" divided by "Total Number of Customers".

SAIFI is the average number of forced sustained interruptions experienced per customer served per year (measured in outages). Calculation is the "Total Customer Interruptions" divided by "Total Number of Customers".

CAIDI is the average forced sustained interruption duration experienced by interrupted customers per year (measured in hours). Calculation is SAIDI divided by SAIFI.